

\$40.00

LOS ANGELES

And Return

OR

LOS ANGELES

Returning via

SAN FRANCISCO

"HOME VISITORS" Excursions---On sale Dec.
20th, 23rd and 29th.

LONG LIMITS———STOPOVERS

Two Crack Trains

"Los Angeles Limited"

"Pacific Limited"

CITY TICKET OFFICE

10 East 3rd South

Phone Was. 3502



Home Visitors Excursions

To Points East

Via

Oregon Short Line



Following round trip fares will apply
from Salt Lake City to—

Denver	\$22.50
Omaha or Kansas City	40.00
St. Louis	51.20
Memphis	60.00
Chicago	59.75
Minneapolis or St. Paul	56.44

Tickets on Sale,
Nov. 8, 25, 28;
Dec. 20 and 23;
Limit, 90 days.

City Ticket Office,
Hotel Utah.

Proportionately low fares to many other points.

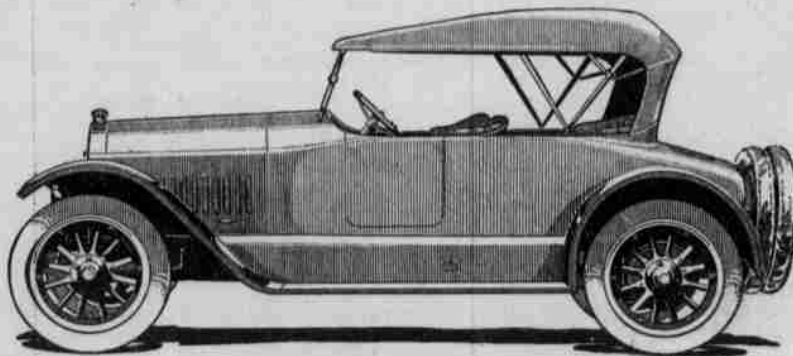
"Let's go back east to old scenes and old friends for a good old fashioned holiday visit."

National

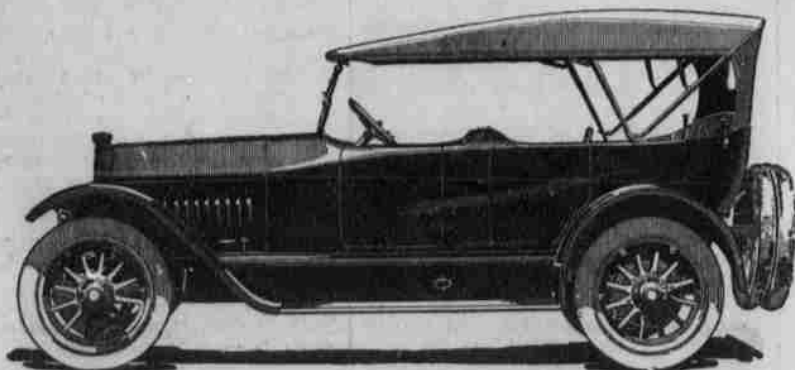
HIGHWAY

Six or Twelve Cylinder Models

The Car With Pep, Power and Pugnacity



National Highway four passenger roadster model



National Highway seven passenger touring model

National Models in Stock
for Immediate Delivery

Automobile Row

RANDALL-DODD AUTO CO., Ltd.

Wasatch 4560