

LUMBER

We are now in position to furnish all kinds of lumber, planed or rough, from our mill on Maple Hill.

Lowest Prices.

HEDSTROM LBR. CO.

At the

Schoen Confectionery

you will find everything fresh and clean ready for the summer trade.

Sole agent for the Bridgeman-Russell Ice-cream

Sold by the bulk or brick-Ice-cream Sodas, Sundaes, or plain ice-cream 10 cents per dish.

Anything you want in a good hot lunch.

Butter-nut bread, 12 cents per loaf. Soft drinks, tobacco, cigars, cigarettes and snuff.

Your trade is appreciated

OLSON BROS.

Team and Auto Livery
Feed and Sale Stable

Draying and all kinds of heavy team work in connection

Special attention given to Hunters and Cruisers

We will serve you promptly and reasonably.

Come and see us



Lower Prices on Ford Cars

Effective August 1st, 1914, to August 1st, 1915, and guaranteed against any reductions during that time. All cars fully equipped f. o. b. Detroit.

Runabout	\$440
Touring Car	490
Town Car	690

(In the United States of America only)

Buyers to Share in Profits

All buyers of new Ford cars from August 1st, 1914, to August 1st, 1915, will share in the profits of the company to the extent of \$40 to \$60 per car, on each car they buy. PROVIDED: we sell and deliver 300,000 new Ford cars during that period.

FORD MOTOR COMPANY

Ask us for particulars

JOHN A. BLACKWELL

ALASKAN ROAD TO OPEN COAL FIELDS

Great Undeveloped Areas Invite Commercial Operation.

TO BUILD LINE BY CONTRACT

W. C. Edes is Chairman of Commission In Charge of Big Government Enterprise—Alaska Northern Route, Seventy-one Miles Long, Bought by Government.

Washington.—The two greatest undeveloped coal fields in America, so far as is now known, will be surveyed in detail by the government this season, and a year hence it is expected they will be ready for commercial operations.

To one of these fields a railroad will be opened within the year, or as soon thereafter as possible. To the other a road will be opened just as soon as the examination of physical conditions shall make it certain that the terminal is satisfactory and the approach to the field satisfactory.

These will be immediate results of the action of President Wilson in signing the order under which construction of the government railroad system in Alaska will begin at once.

The president in signing the order designated that the Alaska Northern road shall be bought by the government and then extended up the Susitna valley to Fairbanks. This will make a total of 471 miles of road from tide-water at Resurrection bay to Fairbanks. A branch thirty-eight miles long will extend into the Matanuska coal field, which has been shown by

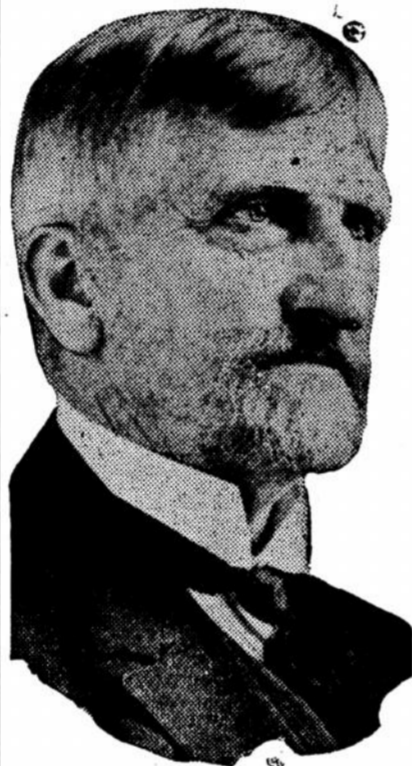


Photo by American Press Association.
W. C. EDES, CHAIRMAN OF ALASKAN RAILWAY COMMISSION.

careful tests to produce a high grade of semianthracite coal of excellent quality for use by the navy.

There were two routes competing for the selection at this time—one from Seward inland, which has been selected; the other going inland by way of the present Copper River and Northwestern railroad, up the Copper river and making available the Bering river coal deposits. It is understood that the decision in favor of the Alaska Northern route was settled by reason of the fact that the navy has tested coals of the Matanuska and Bering river fields and gave its verdict in favor of the former coals.

The government is going to reserve 5,000 acres of the best coal for its own development and use, thus insuring a naval supply for generations to come, no matter what may become of the remainder of the two fields.

In deciding to buy the Alaska Northern road, seventy-one miles long, and extend it up the Susitna valley to Fairbanks the government rejected the offer of the Copper River and Northwestern line, which is 196 miles long. It will pay \$1,150,000 for the Alaska Northern, which is said to be less than the valuation fixed on it by the government appraisers, while it is understood that about \$15,000,000 was asked for the Copper River line, a fine and complete road, built, however, in a difficult region and at great cost.

The president directs that the present Alaska engineering commission, composed of William C. Edes (chairman), Lieutenant Frederick Mears and Thomas Riggs, Jr., shall manage the construction of the lines. The work, however, will be done by contract in sections, instead of directly.

One reason why the Alaska Northern was taken over, as Secretary Lane explains, is that it opens up a generally good country for agricultural, live stock and mining purposes. It is the government's wish that there shall not be an untimely rush of ill equipped bonanza seekers to Alaska, and that is feared in spite of all warnings to the contrary.

Along the route that has been chosen lies the Susitna valley, which, to a large extent, is unknown in detail, though it contains much of gold and great areas of land available for agriculture and stock raising. Big gold strikes have been reported lately along this route, and important finds of quartz in the Mount McKinley country.

CHURCH NOTICES

LUTHERAN CHURCH.
T. G. Sandeno, Pastor.

There will be services in Grand Marais next Sunday forenoon and at the Maple Hill church in the afternoon.

Sunday school at the Lutheran church every Sunday at 9:30 o'clock.

The Congregational Union Sunday School at the Village hall every Sunday morning at 10:30.

ORGANIZATIONS.

THE MODERN SAMARITANS—Grand Marais Council No. 139—Meet every second and fourth Tuesday evening at the Village Hall.

John Woods, Good Samaritan H. H. Howenstine, S. and F. J.

Official Directory

County Officers
First District... Martin Jacobson
Second Dist... Sam Bally
Third District... Osborne Elquist
Fourth Dist... O. J. Allan
Fifth Dist... H. O. Engelson, Chair.
Auditor... Thomas I. Carter
Treasurer... Louis Engelson
Register of Deeds... A. V. Johnson
Sheriff... L. H. Lien
Clerk of Court... George Lang
Judge of Probate... Geo. H. Durfee
Attorney... S. C. Murphy
Supt. of Schools... Wm. Olmsted
Coroner... Aug. J. Johnson
Surveyor... A. E. Berglund

Village Officers
President... Andrew Larson
Clerk... C. G. Stupstad
Treasurer... J. H. Howenstine
Assessor... H. H. Howenstine
Marshal... Jas. H. Pinkerton
Trustees... A. M. Anderson, John Johnson, J. W. Babbs
Justices... Geo. H. Durfee, Matt Johnson
Independent School Dist. No. 1
Chairman... Chris Murphy
Superintendent... Louis Engelson
Superintendent... E. L. Rude

GEO. C. GILBERT, M. D.
PHYSICIAN AND SURGEON
Grand Marais, Minn.
Phone Connection

Some Facts About Corn-Planting.

For grain production, checking corn 3 feet 6 inches or 3 feet 8 inches, with 3 to 4 kernels per hill, is the method usually followed in Minnesota, says A. C. Arny, of the Minnesota College of Agriculture. Checking the corn permits cultivation both ways and gives a better opportunity to keep it free from weeds than does drilled corn. When the soil is exceptionally free from weeds, the corn may be drilled to advantage, and the plants should be from 12 to 14 inches apart in the row.

For silage, or for bundle corn to be fed without husking, a plant every 6 or 8 inches in the row, either checked or drilled, will produce a larger yield and better quality than thinner planting.

From 1 to 2 inches is a good depth to plant if the soil is moist. If there is no moisture within 3 inches of the surface, the corn must be planted deeper. When the season is late and the soil somewhat wet and cold, planting not more than 1 or 1½ inches deep is important. The deeper corn is planted the longer the time needed to reach the surface, which means that the growing season will be shortened. The probability that some plants will not be able to reach the surface is increased by planting unnecessarily deep. The corn plants cannot be made to root lower in the soil by deep planting. The permanent roots are developed about the same depth whether the corn is planted 2 or 4 inches deep.

Three Hints for Up-State Potato Men.

Northern Minnesota has splendid opportunities as a potato region, but, says M. J. Thompson, Superintendent of the Northeast Experiment Station of Duluth, "we must fight the menace of disease." In this fight Mr. Thompson recommends three things:

Selection of disease-free stock as far as possible.

The planting of this stock in new land or in clover or blue grass sod, never repeating immediately on old potato land.

Treating potato seed before planting, with either formaldehyde or corrosive sublimate.

Spring Rain.

It isn't raining rain to me,
It's raining daffodils
In every dimpled drop I see
Wild flowers on the hills.
The clouds of gray engulf the day
And overwhelm the town—
It isn't raining rain to me
It's raining roses down.

It isn't raining rain to me,
But fields of clover bloom
Where any buccaneering bee
May find a bed and room.
A health unto the happy
A fig for him who frets—
It isn't raining rain to me
It's raining violets.

Mr. and Mrs. Robert Waldron of Schroeder, came down on the American last evening and will return this afternoon.

Eggs for Hatching

From my pure bred, S. C. Rhode Island Red hens. Mated with them is a ten lb. cock from DeGraff's farm of New York. Price—\$1.00 per 15 or \$5.00 per 100.

T. G. SANDENO.

Notice!

Johnson-Murphy Well Company, cannot commence drilling wells before August 1st, on account of busy planting season, but orders will be received for wells.—August J. Johnson & Chris Murphy Co.

For sale or trade for Southwestern Minnesota, North Dakota, or Western land—the NW¼ NE¼, and NE¼ NW¼, Sec. 27 and NE¼ of NE¼, Sec. 28, 63-1 West, 160 acres assessed valuation \$4,000.00, taxes \$75.00

T. E. WOLFENDEN,
Delano, Minn.

LOST—a tug and hame from a light single harness about one-half mile from court house on new Maple Hill road. Finder please return to or notify T. G. Sandeno,

Our rates from now on at

Hotel Paine

will be at the rate of \$1.50 and \$2.00 per day

F. R. PAINE,
Proprietor.

Order for Hearing on Petition to Convey Lands on Contract.

STATE OF MINNESOTA, ss
County of Cook

IN PROBATE COURT
Special Term, April 14th 1915.

In the matter of the estate of Louis E. M. Plante, Deceased.
On reading and filing the petition of Fred Amyotte claiming to be entitled to a conveyance of certain real estate from the executor (Godfrey Plante) of said estate, setting forth that Louis E. M. Plante, deceased, was bound by contract to convey said real estate to the said Fred Amyotte upon the terms and conditions therein stated, with a description of the land to be conveyed, and the facts upon which such claim to conveyance is predicated, and praying that the Probate Court make a decree authorizing and directing the said Godfrey Plante—Executor—to convey said real estate to said petitioner as the person entitled thereto.

It is Therefore Ordered, That all persons interested in said estate may appear before this Court, at a special term thereof to be held on Friday the 14th day of May, A. D. 1915, at 10 o'clock in the forenoon, at the Probate office in the Court House in Grand Marais in said County, and oppose said petition.

And it is Further Ordered, That this order be published once in each week for three successive weeks prior to said day of hearing in the Cook County News-Herald a weekly newspaper printed and published at Grand Marais in said County.

Dated at Grand Marais, Minn., the 14th day of April A. D. 1915.

By the Court,
GEORGE H. DURFEE,
Judge of Probate.

S. C. MURPHY,
Attorney for Petitioner
Grand Marais, Minn.
(Seal Judge of Probate, Cook County, Minn.)

Notice for Sealed Bids

Notice is hereby given that the undersigned will receive sealed bids up to and including May 12th 1915, at 9 o'clock a. m. as follows:

For blasting out the rocks located near the village limits on the new Maple Hill-Grand Marais road.

The compensation which may be agreed on will be paid as soon as the said work has been completed and accepted by the Town Supervisors.

Further particulars can be had by applying to Board of Supervisors.

The Town Board of Supervisors reserves the right to reject any and all bids.

TOWN OF MAPLE HILL
Cook County, Minnesota.

By WM. ELLQUIST,
Town Clerk.

NOTICE FOR PUBLICATION

Department of the Interior—U. S. Land Office at Duluth, Minn.

April 20, 1915.

Notice is hereby given that Isak Hagen, of Grand Marais, Minn., who, on March 15th 1904, made homestead application No. 377150, for Sec. 28, North West Quarter, Section 31, Township 62 N, Range 3 East 4th P. Meridian, has filed notice of intention to make Final five year Proof, to establish claim to the land above described, before Geo. Lang, Clerk of District Court, Cook County, Minn., at Grand Marais, Minn., on the 12th day of June, 1915.

Claimant names as witnesses:

John Lief, John Jackson, John Bloomquist and John William all of Grand Marais, Minn.

4-29 JOS. WINCZEWSKI
Register

Wall Paper

We have received new samples of wall paper of the finest that ever came to this town. Come and see them. We also have furniture, stoves and dishes of all descriptions.

If not found at the shop call at Bramer's store.

AUG. J. JOHNSON & SON

Village Lots

AT PRICES AND ON TERMS THAT OFFER SAFE INVESTMENT CHANCES.

Grand Marais Real Estate and Improvement Co.

Excellent residence and business locations still to be had. See

Geo. H. Durfee,

AGENT,

Grand Marais, Minn.

General Blacksmith

HORSESHOEING

and

REPAIR WORK

Prompt Service
Reasonable Prices

Sam Bally

Grand Marais, Minn.

Ferndale Farm

Hovland, Minn.

For the balance of the season of 1915, I will spare a limited number of settings of S. C. R. I. Red eggs for hatching at \$1.00 per 15. My stock is better than ever this year, but owing to the large amount of orders on hand I am unable to sell more than one setting to each party.

O. L. JOHNSON,
Proprietor.

No. 1978

NOTICE OF EXPIRATION OF REDEMPTION.

OFFICE OF COUNTY AUDITOR, County of Cook, State of Minnesota.

To C. E. Thompson.
You are hereby notified that at a tax judgment sale held on the 8th day of May, 1911, the following described parcel of land situated in the County of Cook, and State of Minnesota, to-wit:

Lot One (1), of Section Thirty-one (31), of Township Fifty-nine (59) Range Four (4) West, was sold for the sum of Three and 60/100 Dollars. That thereafter, on the 12th day of April 1915, the same still remaining unredeemed was sold to a purchaser by state assignment certificate for the sum of Thirty-six and 70/100 dollars, that the amount required to redeem said parcel, exclusive of the costs to accrue upon this notice is the sum of Thirty-six and 70/100 dollars, and interest as provided by law to the day such redemption is made; and that the tax certificate issued upon said sale has been presented to me by the holder thereof, and the time for redemption of said parcel from said sale will expire sixty days after the service of this notice and proof thereof has been filed in my office.

Witness my hand and official seal this 12th day of April 1915.

T. I. CARTER,
Auditor of Cook County, Minnesota.
(Cook County Auditor seal) 4-15