

## In Labor's Field

### TO CLOSE EARLY EXCEPT SATURDAY

CLERKS AND MERCHANTS FORM  
AN AGREEMENT.

Retail Merchants Consent to Proposal  
of Employees, Designating Hours of  
Opening and Closing and Holidays  
—Will Shut Up Shop at 6; Satur-  
days at 10 p.m.

Officers of the Minneapolis Retail  
Clerks' association are circulating the  
early-closing agreement for the sig-  
natures of those retail merchants who  
may care to sign it. The agreement  
has been accepted by the Retail Mer-  
chants' association, so practically all  
the large stores are parties to the  
compact. In fact, the arrangement  
was brought about thru negotiations  
between the clerks' and the mer-  
chants' organizations, which com-  
menced when the clerks made an  
effort to secure the observance of La-  
bor Day by the members of the Re-  
tail Merchants' association. Altho the  
clerks will have to forego the pleasure  
of celebrating Labor Day this  
year, they have succeeded in arriving  
at an understanding with their em-  
ployers which will ultimately result  
in securing for them much more than  
might have been if arbitrary tactics  
had been pursued.

Among other things, the agreement  
provides that the stores shall be  
closed on Sundays; open at 8 a.m.  
and close not later than 6 p.m., ex-  
cept Saturday, when the closing hour  
shall be not later than 10 p.m.; stores  
to be closed on Memorial Day, Fourth  
of July, Thanksgiving Day, Christ-  
mas and New Year's Day; the  
night preceding these holidays  
stores may remain open until 10  
p.m.; from Dec. 19 to Dec. 24,  
inclusive, stores are to open at 8 a.m.  
and close at the pleasure of the pro-  
prietors; when Christmas and New  
Year's Day fall on Sunday, stores are  
to be closed on the Mondays follow-  
ing. The agreement is to continue in  
force until Jan. 5, 1905.

The entertainment committee of the  
clerks' association is arranging for an  
entertainment and open meeting to  
be held Monday evening, Sept. 19.

#### LABOR AT THE EXPO

American Federation Has an Inter-  
esting Exhibit.

One of the interesting features of  
the Louisiana Purchase exposition,  
from a labor point of view, is the ex-  
hibit of the American Federation of  
Labor. The booth is in charge of C.  
P. Connolly, a St. Louis union printer,  
and visitors there receive a cordial  
welcome. In the collection is the  
first charter issued by the National  
Labor union, in 1866, from which or-  
ganization the American Federation of  
Labor of today is the successor,  
having been organized at Pittsburgh,  
Pa., Nov. 15, 1881. Among the pic-  
tures adorning the walls are those of  
Samuel Gompers, president; James  
Duncan, John Mitchell, James O'Con-  
nell, Max Morris, Thomas I. Kidd, D.  
A. Hayes, Daniel J. Keefe and Will-  
iam Spencer, vice presidents of the  
federation, and Frank Morrison, sec-  
retary, and John B. Lennon, treasurer.

Charts showing the growth in mem-  
bership from the formation of the  
federation and the membership of  
national and international unions af-  
filiated and those not affiliated are  
prominently displayed. A fine pic-  
ture of the Union Printers' Home at  
Colorado Springs, Col., together with  
a group of the officers and executive  
council of the International Typo-  
graphical union, attract much at-  
tention.

Perhaps the most comprehensive  
display of any individual organiza-  
tion is that of the Cigarmakers' In-  
ternational union, which is well worth  
the attention of students of labor  
problems. A financial statement cov-  
ering the entire existence of the inter-  
national union shows the expendi-  
ture of an enormous sum of money  
in the interest of the craft, and from  
the figures presented one may gain a  
comprehensive idea of the power for  
good a labor organization can be  
when conducted along the lines and  
business policy of the Cigarmakers'  
International union.

#### TEAM DRIVERS' CONVENTION

Minneapolis Delegate Tells of Meet-  
ing at Cincinnati.

Delegate Roderick, who repre-  
sented the local Team Drivers' union  
at the convention held in Cincinnati,  
is home again. Mr. Roderick re-  
ports the convention well attended  
and the business transacted is ex-  
pected to be highly beneficial to the  
membership. In general, thru the  
abolition of the offices of general  
recording secretary, editor of the of-  
ficial journal, general organizer, three  
district organizers and the traveling  
auditor, the union expects to save  
about \$35,000 a year in salaries and  
expense accounts.

The per capita to be paid into the  
defense fund has been doubled, but  
this does not mean that dues will be  
increased, as the additional amount  
is taken from the general fund. It is  
the intention to accumulate a large  
fund for defensive purposes. The  
membership of the union is now  
175,000, and it is believed this num-  
ber will be doubled in the coming  
year.

#### TO SET CONVENTION DATE

Governors of Structural Building  
Trades Alliance to Meet.

It is probable that a meeting of the  
board of governors of the recently-  
formed Structural Building Trades  
Alliance of America will be called  
within the next ninety days. Minne-  
apolis has a representative on the  
board in A. G. Bainbridge, who was  
elected second vice president of the  
new organization. The board of gov-  
ernors consists of one representative  
from each of the affiliated building  
trade unions, who is also a vice pre-  
sident of the alliance.

Buffalo has been selected as the  
place for holding the next conven-  
tion.

#### CURE FOR FITS ON TRIAL

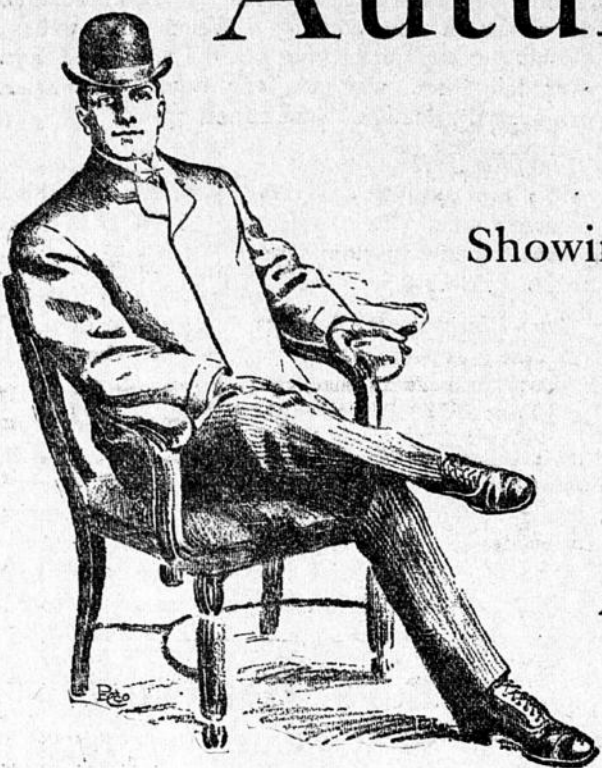
Here is the fastest offer ever made  
to the sufferer with epilepsy or fits.  
Just deposit \$1.50 with Voegeli Bros.  
Drug Co., corner Hennepin and Wash-  
ington avenues and corner Seventh  
street and Nicollet avenue, and get a  
bottle of Ellixir Kosine. If it does not  
help you and show that its continued  
use will effect a complete and lasting  
cure, get your money back.

Voegeli Bros. will take all the risk.  
They are well known and reliable, and  
this offer they make will be faith-  
fully carried out. Ellixir Kosine will  
positively cure epileptic fits and all  
similar nervous twitches and spas-  
modic affections, no matter what the  
cause. If it does not, Voegeli Bros.  
will return your money. It is the only  
known cure for fits, the only remedy  
for this disease that costs you nothing  
unless it cures. Price \$1.50. Mail  
orders filled.

For sale by the Ellixir Kosine Co.,  
Washington, D. C., or by Voegeli  
Bros. Drug Co., corner Hennepin and  
Washington avenues and corner Sev-  
enth street and Nicollet avenue.

## 2 for 1 Trading Stamps

Double amount Saturday in every de-  
partment, of the celebrated S. &  
H. Green Trading Stamps. Beauti-  
ful premiums given away daily to  
collectors of these stamps.

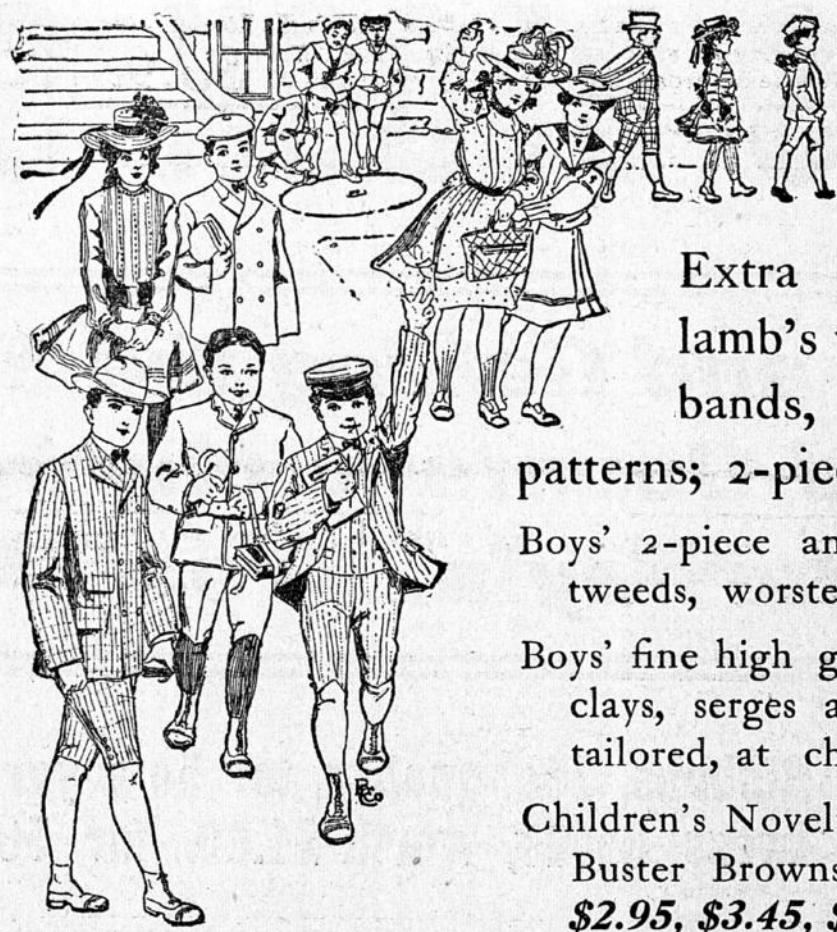


### Fall Furnishings

New Fall Shirts, starched bos-  
oms, light or dark grounds,  
fancy figured, cuffs attached  
or detached, at \$1 and \$1.50.

Beautiful new Neckwear, in  
brocaded silks and satins,  
large squares or derbies, all  
the new fall shades, offered  
at 50c.

Smart new Fancy Vests, in all  
the new fall shades, at \$1,  
\$1.50, \$2.50 to \$4.



tion of the alliance, but the date has  
been left for the board of governors  
to decide. This action was taken in  
order that a time might be chosen  
which would not conflict with the  
conventions of the various crafts in-  
terested.

#### Labor Day in St. Paul.

Stillwater Carpenters' Union will march  
in the Labor Day parade at St. Paul. All  
other Stillwater unions have been asked  
to participate and some will accept. A  
gold badge, donated by the St. Paul Car-  
penters' Union, will be given to the union  
having the greatest percentage of its mem-  
bers in the line of march. The sum of  
\$120 will be awarded in prizes. A picnic  
at Harriet Island will follow the parade.

#### Planning Winter's Work.

The entertainment committee of the  
Woman's Union Label League will meet  
next Tuesday evening at the home of Miss  
Lou Owens, 316 Nineteenth avenue S.  
Plans for the coming winter will be dis-  
cussed and programs will be outlined as  
far as possible. The committee will open  
the winter campaign with a program in  
one of the downtown churches.

#### Factions Are United.

A charter has been granted to the In-  
ternational Photo-Engravers' Union by  
the American Federation of Labor, and  
the former have applied for membership

In the compact between the allied print-  
ing trades. All differences between the  
International Typographical Union and  
the photo-engravers have been settled sat-  
isfactorily, and the two factions are  
united. The new arrangement provides  
that should trouble arise in the photo-  
engraving trade, which might involve the  
Typographical Union, the latter shall pass  
upon the matter and settle the dispute if  
possible.

#### Machinists Are Assessed.

Owing to strikes on the Santa Fe rail-  
way system, in Chicago and in other  
places, it has been found necessary by the  
International Association of Machinists to  
levy a general assessment of \$1 upon the  
membership. The Santa Fe and Chicago  
difficulties alone involve upward of 7,000  
men, and for the past two months the  
International has been paying over \$10,-  
000 a week. The membership is 75,000.

## CASTORIA

For Infants and Children.

The Kind You Have Always Bought

Bears the Signature of J. C. Watson

THIRD AND NICOLLET.



J. L. LYNCH, President.  
GEORGE E. CRIST, Vice President.  
J. L. DICKINSON, Secretary.  
J. F. NICHOLSON, Treasurer.  
A. M. NORDSTROM, Director.

# Autumnal Apparel Aglow!

Gentlemen's Fall Attire, Distinct and Exclusive.

Showing a complete assortment of New Fall Suits, Topcoats, and Raincoats at

**\$10, \$12, \$15, \$18, \$20**  
**\$22, \$25, \$28, \$30, \$32**

An unparalleled display gathered from every known fashion center.

Every new fabric, every new weave, every new  
color, every new cut now shown for the first time.



## Opening of New Fall Hats

See the Model Warranted at \$1.90. Productions from  
the best hat makers in this country. The exact copies  
both in black and colors of the best agency hats. All the  
latest fall shades in black, seal brown and tan, soft and  
stiff. Our entire line now on display Saturday for

### One-Ninety

The "Model Special" at \$3, both soft and stiff. All  
the new shapes in blacks, golden brown and mouse colors.  
Agency hats at \$4 and \$5 are no better. An immense as-  
sortment for the opening Saturday at

### Three Dollars

J. B. Stetson's celebrated hats, new 1904 shapes and  
colors, at \$3.50, \$4 and \$4.50.



# School Suits for Strenuous Boys

Pure Lamb's Wool Suits, \$2.95.

Extra heavy, in 2-piece double-breasted or Norfolk style, strictly all pure  
lamb's wool, Italian serge lined, taped seams, expanding waist  
bands, double silk-stitched corded seams, dark plaid mixed

**\$2.95**

patterns; 2-piece Suits sizes 6 to 16; Norfolk sizes 6 to 12, choice

Boys' 2-piece and Norfolk Suits, in cassimeres,  
tweeds, worsteds and cheviots; at choice, \$3.50.

Boys' fine high grade dress Suits in black or blue  
clays, serges and thibets, serge linings, finely  
tailored, at choice, \$4.95.

Children's Novelty Suits, in blue, brown, red serges,  
Buster Browns with knickerbocker trousers, at  
\$2.95, \$3.45, \$3.95 to \$5.95.

Young men's Suits, in cheviots, tweeds and worsteds,  
single or double breasted, at \$8.95.

Youths' fine dress Suits, in heavy or medium weight  
blue serges or thibets. The new cut, full shoul-  
ders, large sleeves, wide lapels, single or double  
breasted, at \$12.50 and \$15.00.

Boys' Puritan Waists and Shirts in percale and  
madras, at 48c, 75c and 95c.

#### Carpenters Plan Picnic.

Carpenters' Union, No. 7, will hold a  
picnic at Lake Harriet in the afternoon  
of Labor Day. A feature of the program  
will be an address by Rev. Carl D. Thomp-  
son. Rositter's band has been engaged,  
and a program of sports, music and  
speeches will be provided. A special in-  
vitation has been extended to the mem-  
bers of the Woman's Union Label League  
to participate.

#### Want 1905 Convention Here.

William L. Krussow and F. Schuette

have been chosen by the Twin City Photo-  
engravers' Union as representatives to the  
International convention, in St. Louis,  
Sept. 12-18. The delegates have been in-  
structed to try and secure the 1905 con-  
vention for Minneapolis. The annual elec-  
tion of the twin city union will be held  
Monday evening, Sept. 12.

#### LABOR NOTES.

Stationary Firemen's union has chosen Daniel  
Kietzke for marshal in the Labor Day parade.  
Every member of the Stonemasons' Union is  
requested to attend the next meeting Aug. 30.  
The next meeting of the Federation council

will be held at Federation hall, St. Paul, Sunday

afternoon, Sept. 11.  
There will be a special meeting of the Sheet  
Metal Workers' union next Wednesday evening.  
St. Paul unions are taking up the free text-  
book proposition with considerable vim, and a  
number have taken favorable action on the adop-  
tion of the proposed system.

A few unions have decided that they will not  
be in line in the Labor Day parade. Among them  
are the Plumbers' Laborers', the Glassworkers'  
and the Painters and Decorators' unions.  
Receipts for the fiscal year ending May 31,  
1904, for the International Typographical union  
were \$240,000 and the expenditures for the same  
period were \$222,817.88. A balance remained  
from the previous fiscal year, amounting to

\$49,170, so the past year closed with \$36,537.92  
in the strong box of the union.  
Sodawater Bottlers' union, at the last meet-  
ing, declared the office of corresponding and  
financial secretary vacant and decided to divide  
the duties of the office. St. Paul was elect-  
ed financial secretary and H. Reinbeck, cor-  
responding secretary. A. Wolfe was elected to  
represent the union in the Trades Assembly, and  
the organization voted to participate in the  
Labor Day parade.

Have no equal as a prompt and  
positive cure for sick headache, bil-  
iousness, constipation, pain in the  
side, and all liver troubles. Carter's  
Little Liver Pills. Try them.

## Hotel Somerset, Boston.

Commonwealth Avenue.

Boston's Newest and Most Palatial Hotel.

While delightfully situated at entrance to Park and Fenway, and absolutely open  
and having unobstructed air and view on all sides, the "Somerset" is only ten min-  
utes from Railway Stations, Theatres and Shops. The ideal "stopping off" place  
for families and tourists en route to and from the Mountains and Seashore.

Open Air Restaurant. Alfred S. Amer, Manager.  
SEND FOR BOOKLET.

## Sale Ten Million Boxes a Year.

The BEST HOT WEATHER MEDICINE

**ARCARETS**  
CANDY CATHARTIC

THEY WORK WHILE YOU SLEEP

PREVENT ALL SUMMER BOWEL TROUBLES