

Severe Cough— Consumption Threatened



MRS. MARY PAINTER.

Duffy's Pure Malt Whiskey

For more than fifty years has been prescribed by doctors of every school, recommended by temperance advocates and ministers of the Gospel, and used in over two thousand leading hospitals as the greatest tonic stimulant and health builder known to medical science.

Duffy's Pure Malt Whiskey cures coughs, colds, consumption, grip, bronchitis and pneumonia. It stimulates and enriches the blood, aids digestion, builds up the nerve tissue, tones up the heart and fortifies the system against disease germs. It prolongs life, keeps the old young and the young strong. Duffy's Pure Malt Whiskey contains no fusel oil and is the only whiskey recognized by the Government as a medicine. This is a guarantee.

CAUTION.—Be careful to get the genuine when you ask for Duffy's Pure Malt Whiskey. Sold in sealed bottles only; never in bulk. Look for the trade-mark, the "Old Chemist," on the label, and be sure the seal over the cork is unbroken. All reliable druggists and grocers or direct \$1.00 a bottle. Doctor's advice and medical booklet free. Duffy Malt Whiskey Co., Rochester, N. Y.

Boston and Back

A variety of excursion rates to Boston, ranging from \$28.00 to \$37.50, according to route, are offered May 31 to June 9, by the

Chicago, Milwaukee & St. Paul Railway

Return limit June 18, with extension privilege to July 15. Stopovers allowed at Detroit, Niagara Falls, Toronto, Montreal, Chautauque Lake points, Washington, Baltimore, Philadelphia and New York.

These tickets will be honored on the Fast Mail and the Pioneer Limited.

C. R. LEWIS, C. P. & T. A.

W. B. DIXON,

328 Nicollet av., Minneapolis.

N. W. P. A., St. Paul.

The Watch-Dog in your Vest Pocket

YOU can buy Health Insurance now.

Several good "Accident" Companies sell it. Sixty dollars per year will bring you \$25.00 per week, for every week you are Sick.

But, your time alone may be worth far more than that. And \$200 per week might not pay for your suffering.

That's why "Cascaret" Insurance which prevents Sickness, is worth ten times as much money as other "Health" Insurance. Yet "Cascaret Insurance" will cost you less than Ten Cents a week.

That gives you a "Vest Pocket" Box to carry constantly.

"Indigestion" means food eaten but only partially digested.

"Constipation" means food retained in the body undigested too long, till it decays. It then supplies the poisons of decay to the system, in place of the nourishment it might have supplied.

Isn't that a tremendous handicap worth insuring against?

What does it cost to Cure Constipation or Indigestion with their train of small and great ills, and to insure against a return of them?

Not so very much.

One 10 cent box of Cascarets per week, at most, perhaps half that.

One candy tablet night and morning, taken regularly for a short time, is warranted to cure the worst case of Constipation or Indigestion that walks the earth.

One tablet taken whenever you suspect you need it will insure you against 90 per cent of all other ills likely to attack you. Because 90 per cent of these ills begin

in the Bowels, or exist through poor Nutrition.

Cascarets don't purge, don't weaken, don't irritate, nor upset your stomach.

No,—they act like Exercise on the Bowels, instead.

They stimulate the Bowel-Muscles to contract and propel the Food naturally past the little valves that mix Digestive Juices with Food.

They strengthen these Bowel-Muscles by exercising them.

The time to take a Cascaret is the very minute you suspect you need one.

—When your tongue is coated a little.

—When your breath is not above suspicion.

—When your head feels dull, dizzy, or achy.

—When you have eaten too heartily, or too rapidly.

—When you have drunk more than was good for your digestion.

—When you have a touch of Heartburn, Gas-belching, Acid-rising-in-throat, or a Coming-on-Cold.

Carry the "Vest Pocket" Box where it belongs, just as you would your Watch, Pocket-knife or Lead-pencil.

It costs only 10 cents. At any drug-gist.

Be sure you get the genuine, made only by the Sterling Remedy Company, and never sold in bulk. Every tablet stamped "CCC."

IF FREE TO OUR FRIENDS!

We want to send to our friends a beautiful French-designed, GOLD-PLATED BOX, hard-enamelled in colors. It is a beauty for the dressing table. Ten cents in stamps is asked as a measure of good faith and to cover cost of Cascarets, with which this dainty trinket is loaded.

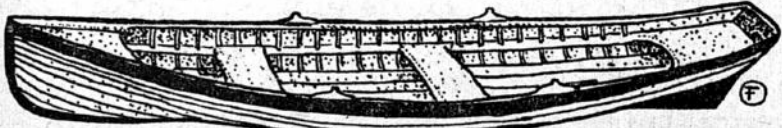
Send to-day, mentioning this paper. Address Sterling Remedy Company, Chicago or New York.

J. W. KEISER KEISER BROTHERS J. S. KEISER

WHY PAY RENT when you can come to Hyde County, South Dakota, and get a farm of your own. We have the BEST land for the LEAST money that can be had in South Dakota. Prices range from \$15.00 to \$25.00 per acre. All information, such as maps, etc., sent free. Write or call on

KEISER BROTHERS s s s s HIGHMORE, S. D.

BOATS AND LAUNCHES THAT CAN'T SINK.



J. C. SHADEGG ENGINE CO., 315 SOUTH THIRD STREET.

Railroads

GRAIN RAILROADS' EARNINGS SWELL

LOSS ON COAL SWALLOWED UP BY GAIN ON GRAIN.

Loss on Cotton in the South Overset by General Gains—Only Three of Fifty-six Roads Report Losses as Compared with April, 1905—Northern Roads Lead in Gains.

Railroad gross earnings for April, as compiled by the Financial Chronicle, show an increase that is remarkable in view of the suspension of coal mining and the consequent heavy decrease in both anthracite and bituminous coal traffic. The compilation comprises fifty-six roads and the aggregate earnings are \$32,409,705, as compared with \$33,946,012 for the same month in 1905. The increase is \$5,463,693 or 11.64 per cent. Last year the same roads showed an increase in gross over April 1904 of \$4,103,302 or 8.7 per cent.

The northern transcontinental roads made the greatest gains, these roads being little affected by the mining difficulties. Canadian Pacific led the list with an increase of \$1,266,000, and Great Northern followed with an increase of \$925,005. A portion of these increases, as in the case of western roads, may have been due to an increase in the grain movement. For western grain receipts aggregated 36,331,458 bushels, as compared with 31,680,598 bushels in April, 1905.

Decrease in Coal Traffic.

New York Central must have lost heavily from the decrease in coal traffic, yet the system made a gain of \$131,979 over the gross earnings for April last year. However, this gain is much smaller than the gains made in January, February and March, which averaged over \$900,000 a month.

The Southern roads considered collectively, carried much less cotton than in April 1905, overland shipments being 98,784 bales, as compared with 173,557 bales in the same month last year. Nevertheless these roads showed marked improvement. The Southern railway made the third greatest gain on the list, adding \$484,155 to its total of last year. Louisville and Nashville is next in line with a gain of \$337,501, and Illinois Central follows closely with a gain of \$318,098.

Three of the fifty-six roads reported losses. Buffalo, Rochester and Pittsburgh, on account of the stoppage of mining in the soft coal fields, fell \$354,326 behind its gross for April, 1905. Probably for the same reason Wheeling and Lake Erie sustained a loss of \$75,430. The other road reporting a loss was Missouri, Kansas and Texas, which ran \$80,819.

The Principal Gains.

The compilation does not include the Union Pacific system, which was affected by the San Francisco disaster, nor does it contain earnings of Reading, Delaware, Lackawanna and Western, Delaware and Hudson, Baltimore and Ohio, Erie, Lehigh Valley or Pennsylvania, the roads undoubtedly most benefited by the suspension of mining. The principal gains are shown in the following table:

Canadian Pacific	\$1,266,000
Great Northern system	\$925,005
Southern Railway	\$484,155
Louisville and Nashville	\$337,501
Minneapolis, St. Paul and Sault Ste. Marie	\$319,662
Illinois Central	\$318,098
Missouri Pacific system	\$231,000
Denver and Rio Grande	\$228,200
Grand Trunk	\$190,096
Colorado and Southern	\$170,915
Texas and Pacific	\$134,883
New York Central	\$131,979
St. Louis and San Francisco	\$112,510
Central of Georgia	\$100,321
Wabash	\$104,120
Western Maryland	\$95,159
Chicago Great Western	\$75,183
Alabama, New Orleans and Texas	\$68,950
Yazoo and Mississippi Valley	\$64,909
Detroit, Toledo and Ironton	\$34,239
Gulf and Ship Island	\$1,321

GRAIN RATES HOLD

Railroads Decide Not to Make Usual Spring Reduction.

Special to The Journal. Chicago, May 16.—Altho the lake strike is ended and the steamships have again become a factor in the rate situation in the east, the railroads have decided not to reduce the rates on export grain from Chicago to Atlantic seaports to meet the competition of the water route. They say there is no grain moving and that a reduction in rates is unnecessary.

For years it has been the annual custom to reduce the rates on grain east of Chicago at the opening of navigation. This year the threatening labor situation delayed the reduction. The strike came and the railroads said they would wait until peace was declared. Peace has come and the rates have not yet been reduced.

The railroad men now say that the prices on grain in Chicago are too high to permit any movement for export and that rates are not interfering with the export movement.

RAILROAD IS HOST

Milwaukee Prepares Entertainment for Big Excursion Parties.

The Milwaukee road is making preparations for the entertainment of four big excursion parties, which will be brought to Minneapolis May 22 from southern Minnesota and South Dakota points. A band concert will be given at Minnehaha, where the trains will stop to unload, and the railroad coupons will admit to a ballgame between the infantry and cavalrymen at Fort Snelling.

Returning, the southern Minnesota excursionists will leave Minneapolis at 6:30 p.m. over the Iowa & Minnesota division. Those for Milbank will leave at 6:15 p.m. over the Hastings & Dakota, and for Aberdeen and Everts at 6 p.m.

New Towns Started.

Lots will be sold in the new towns of McVillie and Tolna on the Aneta cut of the Great Northern road at 9 a.m., May 25. The sale will be held at the Farmers & Merchants' bank, Aneta. McVillie will be twelve miles west of Aneta, in the southwest quarter of section 35, township 150, range 59. Tolna will be twelve miles west of McVillie, in northwestern quarter of section 12, township 150, range 62. Both of these towns will be on good, high ground, at points where good water is easily obtainable and excellent drainage assured.

Milwaukee in Montana.

Special to The Journal. Lewistown, Mont., May 16.—The first Chicago, Milwaukee & St. Paul train ever seen in this city pulled in tonight. The conductor bore the legend "Leased to the Montana railroad." Engineers are now working on the outskirts of town, and it is believed that changes in the grade will be made to permit of

LET HARTMAN "FEATHER YOUR NEST"

Hartman's Furniture is That STURDY RELIABLE KIND.

The 22 great Hartman stores throughout the United States have goods made to their special order. They are goods made with care, of selected materials and of most reliable construction in every detail. We will not be party to tricks of cheap manufacturers who cover up defects in their goods with putty and varnish. Our goods are the sturdy, reliable kind that has the lasting quality—the kind that gives satisfaction today and will give satisfaction for years to come.

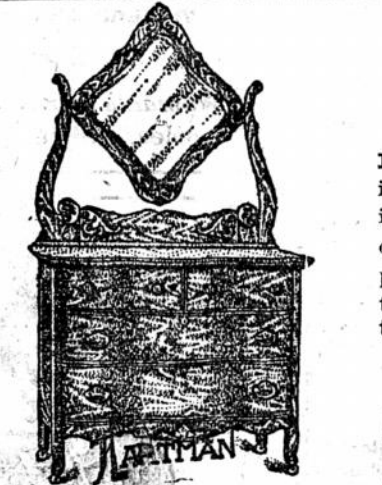
CREDIT ON A NEW AND BETTER PLAN.

The Hartman store grants favors to credit customers not extended by other credit stores in this city. We'll treat you generously, excuse you from payments when ill our out of work and accommodate you in every possible way.

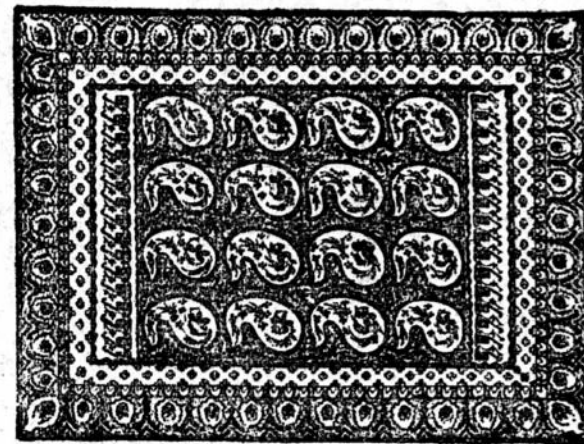


BUFFETS—Exactly like illustration. This beautiful Buffet is made of selected quarter-sawn oak. Hotel lined drawer for silverware. It is fitted with large fancy French bevel mirror. It is handsomely hand carved and has inlaid silver claw feet. The doors are fitted with a very handsome pattern frosted glass. It is beautifully hand polished and of superior workmanship. Hartman's spring opening price, each \$23.25. \$2.50 cash, \$2.00 monthly.

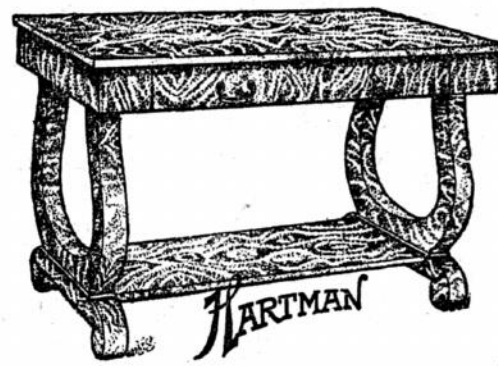
TERMS:
\$25 Purchase, \$2.50 Down, \$2 Month
\$50 Purchase, \$5 Down, \$4 Month
\$75 Purchase, \$7.50 Down, \$5 Month



DRESSERS—These Dressers are made of selected solid oak, are extra large and roomy and of superior workmanship. Have large French bevel plate mirror and a pretty carved mirror frame and standards. They are fitted with patent casters, panel ends. Hartman's special sale price, each \$10.25.

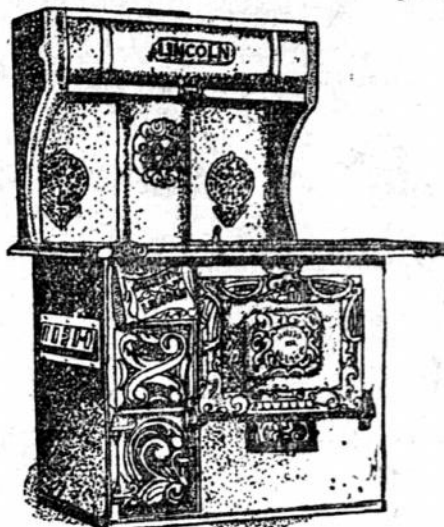


These Rugs are made especially for Hartman's and are of a very superior grade of Brussels; thoroughly warranted to give lasting satisfaction; they have great wearing quality. We have them in many new beautiful patterns and most artistically blended colorings that will not fade. Special price this week \$19.75. Terms, \$2 cash, 50c weekly.



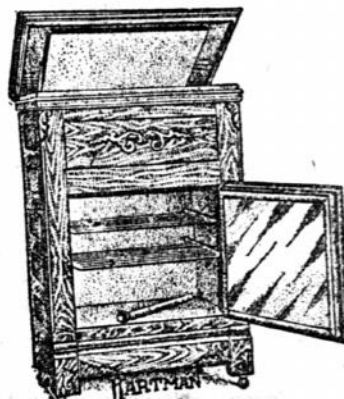
LIBRARY TABLES—Most artistic and massive Library Tables. The top is 26x46 inches in size, is fitted with shelf underneath and has large, invisible drawer. It is of superior workmanship and is finished in that most exquisite of all finishes, golden Empire quartered oak, richly flaked and hand-polished. Buying these tables in vast quantities, made possible by the fact that we are operating 22 great stores enables us to sell them at the exceptionally low price of \$14.75. \$1.50 cash, 50c weekly.

HARTMAN'S 22-24-26 FIFTH ST. SOUTH



HARTMAN'S SPECIAL STEEL RANGE—Exactly like cut. This range, famous the world over, has newest improved features, which have greatly increased its durability and perfection in baking and cooking. Has high warming closet, folding tea shelves and porous oven doors. It is fitted with a duplex grate for burning coal or wood, large oven of non-warpage construction, insulated at exposed points. Hartman's special price \$21.50. Full nickel trimmed \$25.50. Terms \$2.50 cash, \$2.00 monthly.

TERMS:
\$100 Purchase, \$10 Down, \$6 a Month
\$150 Purchase, \$15 Down, \$8 a Month
\$200 Purchase, \$20 Down, \$10 a Month.



REFRIGERATORS—These Refrigerators are made of hardwood and have double walls, which are charcoal filled. They are fitted with all modern ice-saving and hygienic appliances. Are galvanized iron lined and have cast brass trimmings. Hartman's special sale price, each \$8.75.

heavier trains during the coming wool season.

RAILROAD NOTES.

The Great Northern road announces that Manager G. F. Hopkins will open the Hotel del Otter May 26. A band will play afternoons and evenings.

Additional cars were added to the regular westbound trains yesterday and today by the three transcontinental lines, but the movement was not so heavy as early in the season. The Canadian northwest was the mecca of the home-seekers this week.

R. A. White, general auditor of the New York Central line, who is at the Hotel New Yorker, declares the electrification of the Grand Central terminals in New York will take place Sept. 1. Steam will be a thing of the past on Park avenue south of Harlem.

PIPESTONE, MINN.—G. Gunderson, a farmer, has committed suicide by taking strychnine upon returning home from town.

ROSEMOUNT, MINN.—The Milwaukee station burned. Much freight and some express packages were lost. The building was old and small.

CEYLON TEA GREEN OR BLACK IS TEA OF QUALITY

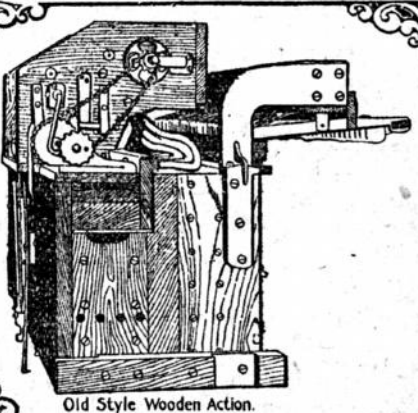
HOW TO MAKE IT—Use half the quantity as of other tea, fresh boiling water. Steep four or five minutes.

"SALADA" Ceylon and India Tea

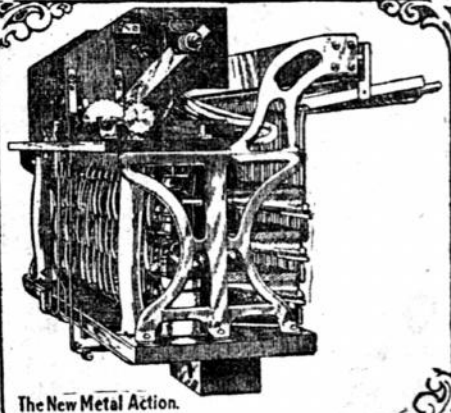
Black, Mixed, Green or Oolong.
LEAD PACKETS ONLY.
60c and 70c per lb.
AT ALL GROCERIES.

The Farrand-Cecilian Piano

A high-grade upright piano with the famous Metal Action Cecilian Piano Player built inside the case. A Piano that anyone can play without experience or musical knowledge.



Old Style Wooden Action.



The New Metal Action.

Not affected by dampness or climatic changes. The piano par-excellence for the summer home or the yacht.

The Metal Action of the Cecilian Piano Player, which is built into the Farrand-Cecilian piano, is made of steel, brass and phosphor-bronze, and is not affected in any manner by dampness, heat or weather changes of any sort.

The old style wooden construction (still used in all other makes of piano players) is peculiarly susceptible to all atmospheric changes on account of the continued swelling and shrinkage of the wood, and the leakages occasioned thereby necessitate frequent repairs which are both troublesome and expensive.

The Cecilian Metal Action practically does away with the necessity for repairs, and in the Farrand-Cecilian piano provides you with an instrument which is always ready for use and can be played by any one either with the fingers, like any ordinary piano, or by means of the Cecilian piano-player mechanism built into it. No experience, no knowledge of music is necessary. Can be bought on easy payments, and your old piano taken in exchange at its full value.

S. W. Raudenbush & Co. 703 Nicollet Ave., - Minneapolis, Minn.

Journal want ads are read by people who are buyers. That's why the Journal carries the most classified advertising.
To get better results from Journal want ads, they should be specific. Many ads, lose much of their force by being too short and vague. Take words enough to tell all the leading points the reader will want to know. Remember this when you are writing a want ad.