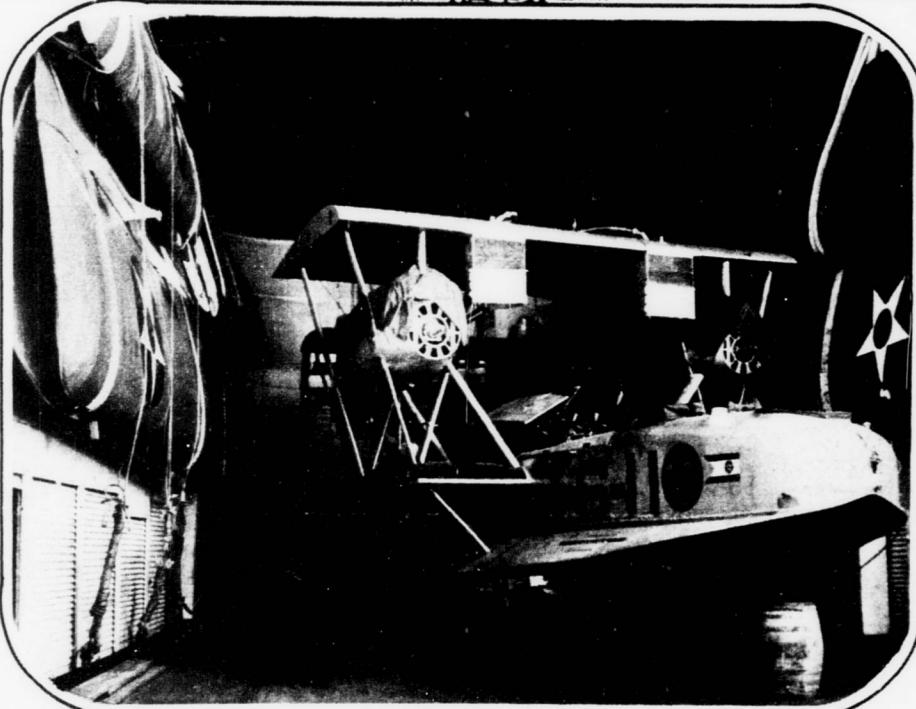


"Off for Hawaii"

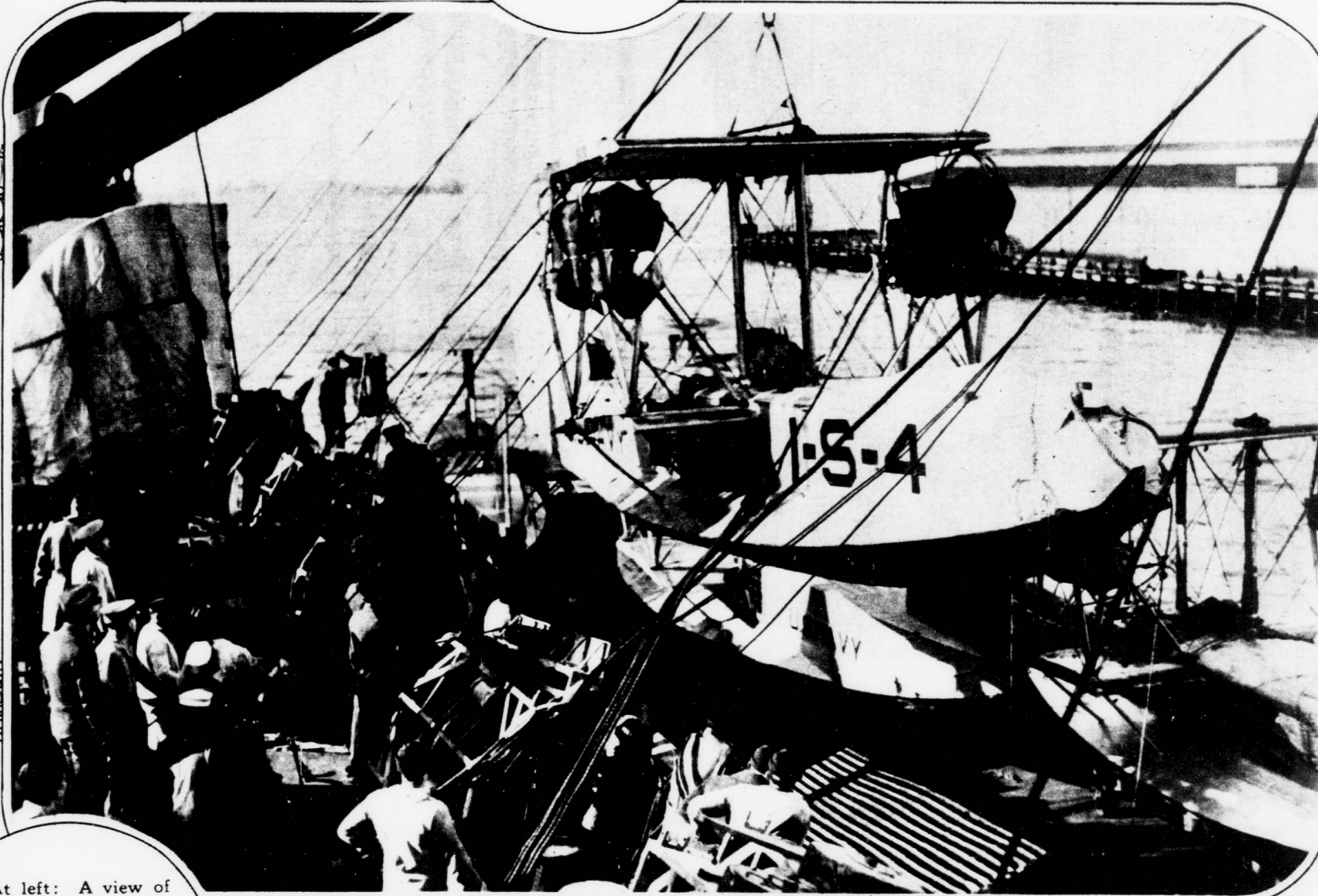
The United States Navy sends great fleet of planes to the Pacific for maneuvers.

One of the two new type scout planes sent to the Pacific. This sailor-artist is giving the aircraft a last touch of paint. A thousand officers and men and 60 planes of the scouting, bombing and observation variety have been sent to Hawaii.

Placing one of the Navy's torpedo planes in the hold of the U. S. S. Jason at Hampton Roads. The Jason carries thirty large cranes to handle the air-planes.

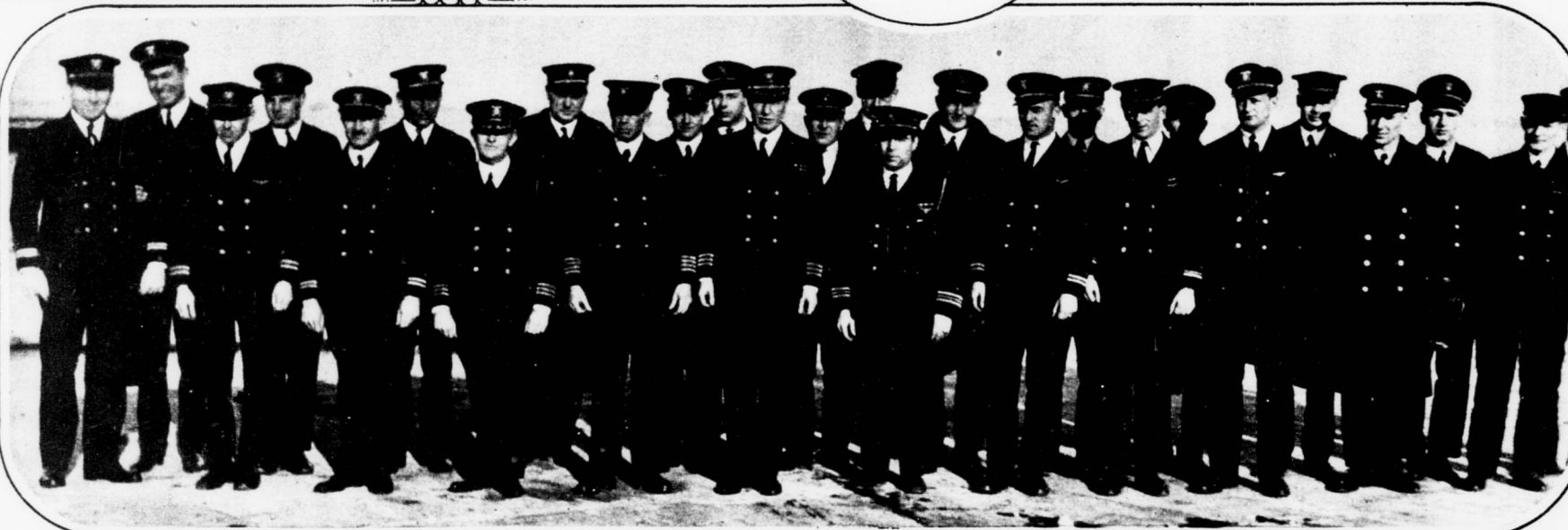
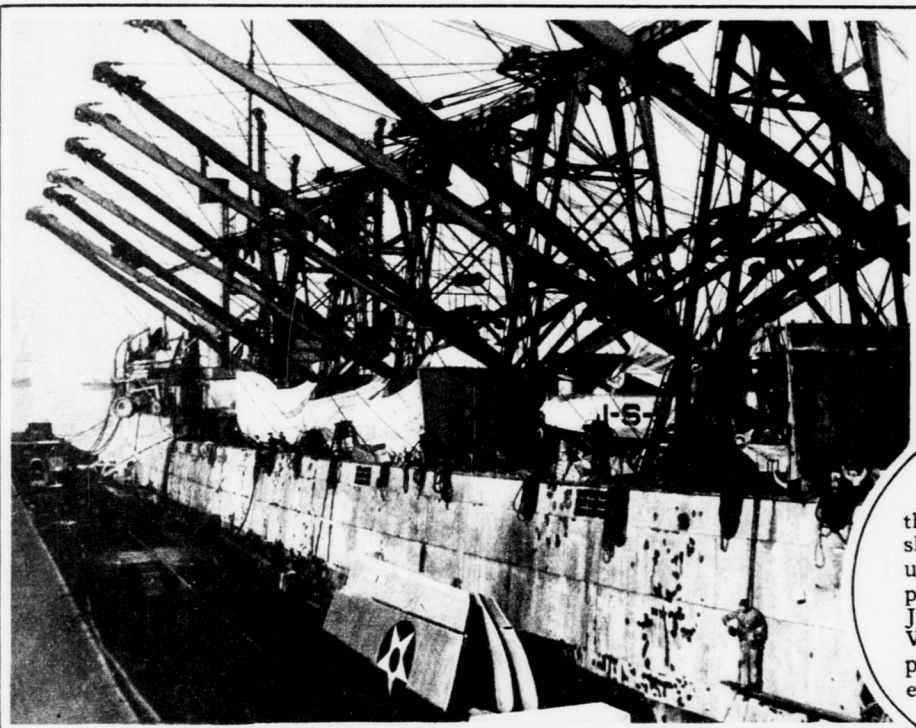


A view of the balloon hold of the U. S. S. Wright, showing one of the Navy's largest scout planes ready for the trip to the Pacific. This type of plane is a recent addition to the air squadron of the Navy.



Hoisting one of the 12 F-5-L type scout planes aboard the U. S. S. Jason. Each plane weighs 7 tons and is equipped with an 800-horsepower motor. All the preparation for the use of the big air fleet in the maneuvers were made at Hampton Roads.

At left: A view of the U. S. S. Jason showing the cranes used in hoisting the planes. With the Jason, the U. S. S. Wright carries extra parts — wings, motors, etc., — for the air fleet.



Naval officers who will have charge of the air fleet maneuvers in the Pacific. Photograph snapped at Hampton Roads while preparations were being made for the long trip to Hawaii.



Capt. H. E. Yarnell, commander of the Navy's air squadron at Hampton Roads, Va., photographed after he had returned from an observation flight over the sea and just before leaving for Hawaii. Lieut. Marinelle at right.