

EVENTS IN THE COUNTIES BORDERING ON THE BAY OF SAN FRANCISCO

CONFESSES THEFT
AND SURRENDERS

Cashier of Oakland Firm Says
He Lost \$4,200 Playing
Chinese Lotteries

OAKLAND, March 11.—Urged by his wife to give himself up and take the inevitable punishment, John E. Neal, cashier of the Sunset lumber company of Oakland, surrendered to Superintendent Callandun of the Morse detective and patrol service today in San Francisco, after he had confessed to Callandun and to his employers and bondsmen that he was more than \$4,200 short in his accounts, the victim of a craze for playing the Chinese lotteries. The confession came as a complete surprise to the officials of the lumber company, who had never suspected him of wrongdoing, although he admitted that his speculations had extended throughout his entire connection with the company, a period of about 18 months. He had succeeded in covering up his shortages by manipulating the accounts of outstanding checks.

Neal told the police that soon after accepting the position he had developed a fondness for playing the Chinese lotteries and he became so fascinated with the game that he took to playing large amounts in the hope of winning the elusive prizes. In a single week, from March 1 to March 8, 1908, he confessed that he had squandered \$800 on the lotteries. Later he confided his plight to his wife. Crushed by the enormity of the revelation she sought some way to aid her erring spouse, but there seemed to be no possibility of paying back the stolen money, and she finally advised him to make a clean breast of his misdeeds and take his punishment.

"I have decided that the best thing to do was to expiate my offense as quickly as possible and try to lead a better life after it is all over," Neal told the newspapermen as he was being led into his cell. "I couldn't stand the incessant realization of my guilt, and the thought that at any moment I was liable to be discovered and hunted like any common criminal. So I decided to surrender and pay the penalty."

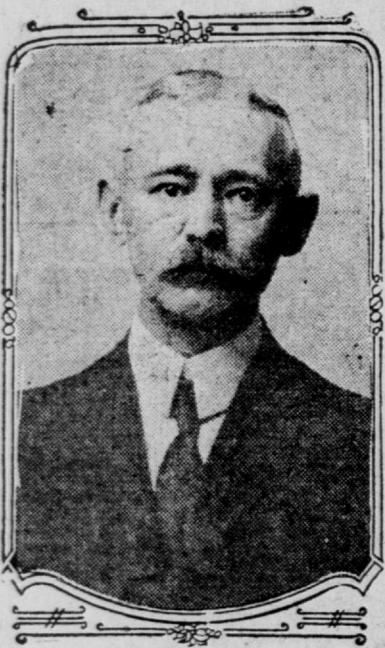
MAN STRUCK BY TRAIN
SUCCUMBS TO INJURIES

[Special Dispatch to The Call]

OAKLAND, March 11.—Zachariah Schary, aged 77, a retired merchant, living at 822 Sixteenth street, died at Merritt hospital this afternoon from injuries received when he was run over by a Key Route train at the ferry slip Monday afternoon. Schary attempted to alight from the train while it was in motion and was dragged under one of the cars, the wheels passing over both of his legs. Schary was a native of Russia. He is survived by a widow and several grown sons.

ALAMEDA PIONEER DEAD.—Alameda, March 11.—William J. Humphreys, who came to California in 1849, died last night at his home in the west end. He is survived by his wife, Rebecca Humphreys, three sons, William, Howard and Albert Humphreys, and one daughter, Mrs. Frank Macauley.

John E. Neal, Who
Stole \$4,200 From
Sunset Lumber Co.

REAL ESTATE MAN IS
ACCUSED OF EXTORTION

OAKLAND, March 11.—H. E. Wolcott, a real estate man, was arrested today by Deputy Sheriff Sweeney on a warrant from Tuolumne county which charged him with extortion. He was released on \$500 bail. Wolcott declares that his arrest is the result of a realty transaction with a man in Tuolumne county which was legal and proper, but in which dissatisfaction was found after the deal had been consummated.

Constipation
Vanishes Forever

Prompt Relief—Permanent Cure
CARTER'S LITTLE
LIVER PILLS never
fail. Purely veget-
able—act surely
but gently on
the liver.
Stop after
dinner—
digest—
cure indi-
gestion—improve the complexion—brighten
the eyes. Small Pill, Small Dose, Small Price

GENUINE must bear signature.

DR. TOM WAL TONG, Tea and
Herb Doctor, 813 Clay st., Oak-
land.—Dear Sir: After many years
of suffering from pains all through
my body and paralysis of my right
side, I consulted Dr. Tom Wal
Tong, who, after three months'
treatment, has restored me to per-
fect health, for which I am truly
thankful to you. Respectfully,
DOMENICO DEVINCENZI
Box 491, Palo Alto, Cal.

REPORTS EXTENSION
PLAN FOR SCHOOLS

OAKLAND, March 11.—In a detailed statement just completed, Superintendent of Schools J. W. McClymonds estimates that it will require at least \$2,800,000 to carry out the improvements which the board of education will recommend for the schools of greater Oakland.

Among the recommendations which are made are the purchase of five acres of land adjoining the site of the Frick school; the purchase of two pieces of land east of the Grant school grounds, at a cost of about \$15,000; the construction of a new modern fireproof building on the Adams point tract at College avenue; the purchase of from five to eight acres south of the railroad near Park street.

BROTHER IN LAW IN
BATTLE WITH GIRL

OAKLAND, March 11.—Bent on spying upon his wife, from whom he had separated and against whom he was endeavoring to secure evidence for a divorce complaint, Walter R. Moody was mistaken for a burglar by his sister in law, Miss Marian Davis, when he forced his way into the kitchen at her home, 1214 Webster street, shortly after midnight last night.

The girl, blinded by the glare of a police lantern, which Moody carried in his hand, courageously leaped upon the intruder after she had tried unsuccessfully to slam the door in his face. A desperate struggle followed, the girl fighting with all her strength, but she was finally overpowered. Then, apparently frightened by his experience, he ran from the house and disappeared in the darkness.

JUDGE SCORES JURY
FOR FREEING MAN

ALAMEDA, March 11.—The verdict of not guilty returned in the case of Ben Farro, a gardener, was characterized by Police Judge R. B. Tappan as a "disgrace and a travesty on justice." The jurors were grilled by the magistrate, who asserted that the evidence adduced warranted conviction. Farro was arrested on the complaint of a young woman employed in a local store. Her testimony was corroborated by Mrs. Lottie Hill of Elmhurst.

Marriage Licenses

OAKLAND, March 11.—The following marriage licenses were issued today: Joseph W. Kingsley Jr., 30, and Meta Lages, 19, both of Oakland.
Karl Young, 28, and Emma Kerlin, 25, both of Berkeley.

STUDENTS DIVIDED
OVER SCHOOL FUNDS

OAKLAND, March 11.—Abandoning efforts to break the deadlock in the senate, the governing student body of the Fremont high school in Mefrose, over the division of the school funds between the boys and girls, the boys, at a rally held yesterday, decided to form an athletic association from which the girls would be rigidly excluded. This new organization will levy dues to the amount of 50 cents a term, which will be used to defray the expenses of the various athletic teams of the institution.

RUESS TO SPEAK AT OAKLAND.—Oakland, March 11.—Christopher Rueess, probation officer of Alameda county, will deliver an address Sunday evening at 8 o'clock at Enterprise hall, Twenty-second and Grove streets, on "Can Juvenile Crime be Prevented?" The address will touch on the work of the Children's Welfare league.

BIG SUM ASKED FOR
RUNNING DOWN BOY

OAKLAND, March 11.—Suit for \$25,495 damages was brought today by Fanny Brown, mother of Samuel Brown, a minor, for injuries sustained by the latter when he was run down by an automobile owned by Dr. C. F. Schultheis, in July of last year. Dr. Schultheis, his wife and H. A. Carr, as part owners of the machine, are named as defendants. The complaint recites that the automobile was running at a high rate of speed along East Fourteenth street, in Fruitvale, and struck the lad as he was riding on his bicycle.

SUMMER SESSION DATES.—Berkeley, March 11.—The summer session of the university will be held this year from June 20 to July 30, according to a university announcement made by Prof. Charles H. Rieber, who has been appointed permanent dean of the session.

THE OPENING OF ALTON PARK TODAY

FORTIETH AND BROADWAY

WITHOUT fear of contradiction or sense of exaggeration we claim that the opening of Alton Park today is the most important feature that has occurred in the residential realty market of Oakland for the past 10 years.

Alton Park is the opening gun of an aggressive policy by The Realty Syndicate. It is the vanguard of a series of operations of development that we are inaugurating which will make Oakland realty the talk of the State.

These are strong statements.

But we know what we are doing.

For years our properties have been allowed to accumulate and increase in acreage and in valuation and now we begin our campaign of development.

We selected the property at 40th and Broadway for our initial demonstration for the reason that of all our possessions nothing had as many elements of immediate success as this particular piece.

It is known to every resident of Oakland, Alameda and Berkeley.

It is completely equipped with transportation facilities.

It is in the very heart of Oakland's most popular and most favored residential section.

It is all ready for the building and the immediate occupancy of the homes.

In fact, it seems to possess every requirement of an immensely successful subdivision and being desirous of making a most PRONOUNCED success at the start we selected Alton Park.

Our idea in this is partly selfish.

We own several millions of dollars' worth of Oakland real estate.

Most of it is residential property.

To sell it profitably we must either develop it to its fullest possibilities before we sell a foot of it, or we must, by some past achievement, assure and convince buyers that we WILL develop it.

Thus you see how a pronounced success at Alton Park will insure the success of our next effort.

Those who purchase these lots will reap the unusual benefits of exceptional conditions, for in the future we expect to use this tract as an example of the success of our subdivision operations.

We want you to watch the property closely, it is going to forge ahead with great rapidity.



Real Estate Department—

NAT M. CROSSLEY, Manager, 1218 Broadway, Oakland

WE HAVE concluded, in order to accommodate business men who can not attend the sale today, to keep our office open at the tract all day tomorrow.

As a general rule we do not believe it necessary to devote Sunday to business purposes, but there are so many people who can go to Alton Park on no other day that we have arranged to accommodate them.

Our downtown offices will remain closed on Sunday as usual.

A great many of those who looked at the property yesterday were surprised to learn that we have not limited the frontage of each lot. Although in the resident blocks we will not sell less than 35 feet, a person is allowed to take 40 feet or 45 feet or 50 feet or whatever amount he chooses. This we believe is quite an improvement over the ordinary method of arbitrarily limiting the frontage and will certainly break the severe similarity of lots characteristic of other properties. We sell the additional frontage at the same rate we sell the 35-foot lots. On Broadway and on 40th we permit purchasers to take 25-foot lots, as this is business property.

We wish to announce to every one who buys a lot today and to all those who purchase tomorrow that we will be pleased to enter into negotiations at any time to build their homes for them and allow the same to be paid for in installments. Our building department has plans ready to submit for cottages and bungalows costing, including the lot, from \$3,250 to \$3,700. You will find these plans to be unusually attractive and, as we are anxious to see building operations commenced at once, are willing to make exceedingly liberal terms and very close prices.

There is no doubt that the attendance at the sale today will be greater than our sales force can handle, consequently we suggest that you call at the Tract Office for particulars if the property interests you.

Authorized representatives of The Realty Syndicate will wear conspicuous badges so that you can pick out salesmen easily if you desire to ask questions.

Maps, folders, price lists, etc., can be obtained at the office upon the tract, where our real estate department will have headquarters for the day.

We Will Help You
Build a Home

We intimated earlier in the week that we would offer you an opportunity to own your own home and at the same time make money on your investment.

Our Proposition is This:

You make your selection of a lot in School Street Terrace on our easy payment plan, and we will agree any time within one year to build you a bungalow or cottage from your own design, and you can pay a small amount down and the balance in the same way you now pay monthly rentals. Now, of course, only a limited number can take advantage of this, so in justice to yourself don't let any grass grow under your feet, but see us at once.

Your investment in School Street Terrace will make money for you for unassailable reasons: Our prices are now lower than surrounding property; the inevitable growth of Greater Oakland is eastward; we are right now on the inside fringe, and while our present transportation facilities are good, big movements by rival electric companies are about ready to break, and we are right in the middle of the extensions eastward.

Another feature that will tend to enhance School Street Terrace values are the restrictions in force: No saloons; no Japanese, Chinese or negroes; all property owners must agree to build according to value restrictions and a certain distance back from the street line; beautiful view from gentle foothill slopes; being in the famous warm belt, the climate is nearly perfect. All these things spell sustained and rapidly increasing values in a populous community.

Summary of Inducements

Big lots—low prices—easy terms—good soil—plenty of fruit trees now in bloom—splendid street work—good transportation, and more coming—near schools, churches and stores.

On Sunday from San Francisco come direct to Fruitvale by S. P. ferry and local; auto waiting, or take Fruitvale Ave. car to School Street, then walk three blocks east.

From Oakland take Dimond car at 13th and Broadway, get off at School Street, then walk three blocks east. Office on tract open every day.

Bright-Merrill Co.

1232 BROADWAY. OAKLAND.
Phones: Oakland 214, Home A-3014.

How to Reach
The Property

From Berkeley take College Ave. car on Shattuck or Bancroft way—get off at 40th and Broadway.

From Alameda or Fruitvale take any car to Oakland and transfer to College Ave. car on Broadway.

From Oakland take College Ave. car on Broadway and get off at 40th.

From San Francisco take Key Route at foot of Market and board the 40th street or Piedmont train. Get off at Broadway.

Or call at our office, 1218 Broadway, and we will be pleased to extend you the services of a motor car.

Maps, Booklets, etc., at our main offices or at the branch office upon the property.