

BRIG.-GEN. EVERSON, FORMER LOCAL MAN, ASSEMBLY SPEAKER

FRIDAY NIGHT PROGRAM
7 p. m.—Lecture, Col. William G. Everson.
8 p. m.—Davies Light Opera company, in "The Mikado."

Because of the inability of Sen. James E. Watson to get away from his duties at Washington, the chautauqua authorities have secured Brig.-Gen. William G. Everson to speak at the Friday night session of the assembly.

Bluffs Enemy
By marching his division repeatedly across the front of the enemy he bluffed them into believing he commanded a mighty army and they were afraid to make an attack.

Elevates English Stage
"Sir James M. Barrie has done more to elevate the English stage than any other man of our time," said Mrs. Katherine Oliver McCoy in her picture-tization of seven scenes from seven of Barrie's foremost plays at the chautauqua Friday afternoon.

Harding
(Continued from Page One.)
Indeed the less menacing conditions of the coal strike of 1902, Mr. Roosevelt fully intended to seize the anthracite mines of his own initiative.

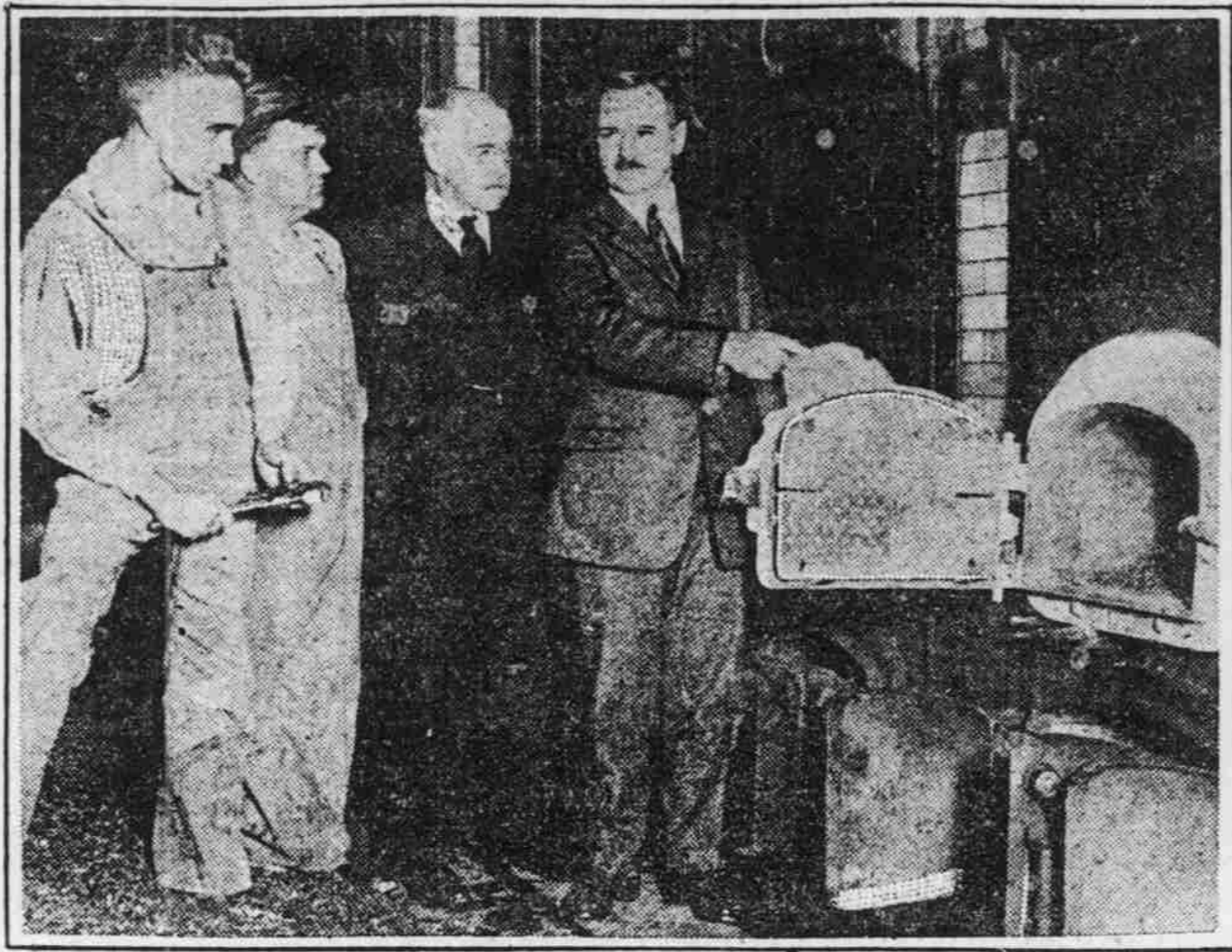
Example of Tact
Mrs. McCoy also noted the tact with which Sir Barrie set at ease a famous American comedian who visited him at the Garrick club in London.

Audience is Pleased
Davies Light Opera company took the audience by storm Thursday night when Mr. Davies presented Richard Stahl's "Said Pasha."

Costumes Beautiful.
The costumes used in the play were beautiful and each part brought out the story with fine effect.

PERMANENT EMPLOYMENT GUARANTEED
Apply or Address 2nd Floor Aetna Trust Building Indianapolis

COAL SHORTAGE CAUSES SKYSCRAPER TO USE OIL FUEL



Firemen receiving instructions regarding new oil-burning furnaces in Metropolitan building. Owners of the Metropolitan Life Insurance building in New York city have solved the semi-

occasional coal shortage problem by replacing the coal furnaces with oil-burning equipment. The oil is used for fuel to furnish heat, light and power for the building.

"The Floors Must Be Fixed"

Soon floors must be prepared for winter. The department of agriculture has prepared a booklet telling what woods are suitable for floors, how to finish, stain and care for floors, all about rugs, carpets, and other coverings, and how to take care of them.

This is a free government publication, and our Washington Information Bureau will secure a copy for any reader who fills out and mails the coupon below, enclosing two cents in stamps for return postage. Write your name and address clearly.

(Do not send the coupon to The Palladium. Mail it direct to Washington, D. C.)

Washington, D. C.
Frederic J. Haskin, Director,
The Richmond Palladium
Information Bureau.
I enclose herewith two cents in stamps for return postage on a free copy of the booklet "Floors and Floor Coverings."

months past, there has never been such in it. Nevertheless, the strikes, and especially the railroad strike have now reached a point where this stop must be considered, at least in the light of a final contingency.

Thinks Power Right
This being so, Mr. Harding thinks it is desirable for congress to give him the necessary authority so that he can use it if the need should arise.

Harding will not assume leadership of congress, he will not use a club over congress. He will not use his patronage to bribe congress. He will not use his position to threaten congress.

HANGARS FOR FLYING FIELD
CINCINNATI, O., Sept. 1.—Assurances have been received here that an appropriation will be made by the government soon for the erection of hangars for the new flying field at Blue Ash, recently purchased by the city as an airplane landing field.

SOLAR ECLIPSE GIVES OPPORTUNITY TO TEST THEORY OF EINSTEIN

CHICAGO, Ill., Sept. 1.—New tests of the validity of Einstein's theory of relativity will be possible with the total solar eclipse on Sept. 21, which will darken the eastern coast of Africa, Australia and a number of South Pacific islands, according to Prof. Edwin B. Frost of the University of Chicago and director of the Yerkes observatory.

The theory requires, he said, that the rays of light from a distant star should be bent out of their straight path when they pass within the field of attraction of a great body like the sun. But stars whose light passes close to the rim of the blazing sun cannot be photographed except on these rare occasions when the moon obscures the sun.

Stars Serve As Tests.
The path of the sun, in its annual sweep around the sky, is dotted with many stars which would serve for the test, but only those can be used which nearly graze the sun at the moment of eclipse, Prof. Frost said.

Accordingly, a photograph is made of these stars at a time of the year when the sun is in a different part of the sky. When this photograph is taken at night with the same instrument that is used at the eclipse, the distances between the critical stars are measured to the ten-thousandth of an inch.

At the moment of the eclipse these stars will lie on opposite sides of the sun. Hence, when this photograph is measured, the distances between the corresponding stars should be slightly greater than on the plates taken some weeks before or after the eclipse, and which were not disturbed by the sun's presence, according to Prof. Frost.

INTERESTING STORY ABOUT JENNY LIND

[From the Detroit News.]
In his book of reminiscences, Arthur Coleridge, a great-nephew of the famous poet, gives an interesting account of Jenny Lind. He was her intimate friend for 20 years.

He tells the following story of the prima donna and the Duke of Wellington:
"Four months after her arrival in London the old warrior had become a captive to the enchantment. He courted the lady so ostentatiously as to rouse the jealousy of the Italian faction; his enthusiasm was rather awkward at times to the object of his homage. I have her own authority for saying that the Duke always arrived early and seated himself in his box on a level with the stage. Directly he saw Jenny Lind he opened fire: "Good evening Miss Lind, how are you tonight? All right, I hope." These well-meant utterances were a trifle out of place at the particular time, for the Lucia, Amina, or Daughter of the Regiment was always so absorbed in her part as to be out of touch with all outside influence."

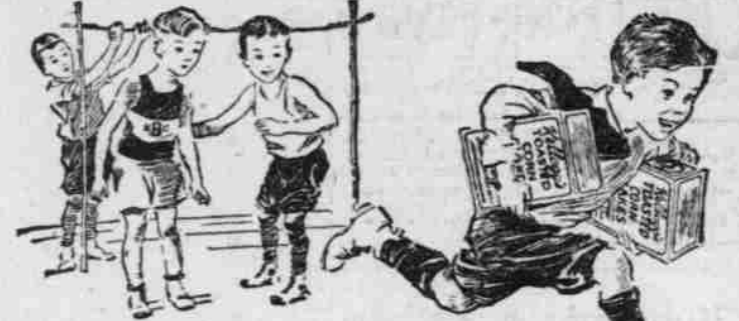
Whether congress does or does not give the president any additional authority Mr. Harding will certainly be expected to use all the authority he has. That authority if events should demand it will turn out to be considerable. Harding has spent the eleven hours of patience and mediation. If the emergency calls for it we shall learn the qualities he retains for the twelfth hour.—Copyright, 1922, by the New York Evening Post, Inc.

KILL RATS TODAY
By Using
STEARNS' ELECTRIC PASTE
It also kills mice, cockroaches, water bugs and ants. It forces these pests to run from buildings, their water and fresh air. A 35c box contains enough to kill 100 to 150 rats or mice. Get it from your drug or general store dealer today. READY FOR USE—BETTER THAN TRAPS

RUSH COUNTY NURSE NAMED

RUSHVILLE, Ind., Sept. 1.—Miss Elizabeth McWilliams of Olney, Ill., has been selected as the successor to Miss Louise Fort, former county nurse.

Miss Fort, although afflicted with an incurable disease, refused to give up her work, and kept her illness secret, working until forced by death, to give up.



Such appetizing, nourishing food for the hot days—
Kellogg's CORN FLAKES
they're so easy to digest!

Cut down on heavy food! You'll feel a lot better and get away from that drowsy, sluggish feeling. Eat lighter foods. Kellogg's Corn Flakes are ideal, for they are not only delicious in flavor and appetizing crispness, but nourish and sustain! Kellogg's digest easily and rest the stomach and help keep your head clear and your body cool.

Kellogg's Corn Flakes are wonderful with the fresh fruits now in season; and, as an extra-dessert treat, serve Kellogg's with fresh fruit and plenty of cream!



Kellogg's Corn Flakes are sold only in the RED and GREEN package bearing the signature of W. K. Kellogg, originator of Corn Flakes. None are genuine without it!

Also makers of KELLOGG'S KRUMBLER and KELLOGG'S BRAN, cooked and krumbled

CORRECTION

In our advertisement of last night the article advertised

54-inch All-Wool Serge
Navy blue only, extra fine quality, for dresses. Special Friday and Saturday, a yard ..... \$1.09

SHOULD HAVE BEEN

54-inch All-Wool Serge, navy blue only, extra fine quality, for dresses; special Friday and Saturday, per yard ..... \$1.69

KNOLLENBERG'S

RADIO advertisement featuring portraits of four people and a Zenith radio. Text includes: A Reminder See and Hear the ZENITH Tomorrow Concerts Afternoon and Evening Weisbrod's MUSICALLY EVERYTHING Opposite Post Office Phone 1655

The Railway Service and Supply Corporation at Beech Grove Plant, Indianapolis, Offers Employment

- To mechanics or experienced machine hands.
To young men desiring to qualify as mechanics and machine hands.
Under following conditions:
Wage Limits—Railway Labor Board as minimum Individual's ability as maximum.
Insurance Benefits—After first 30 days' service, \$2,000.00 life insurance. Accident and sick benefits 65% of weekly earnings.
Other attractive features.

PERMANENT EMPLOYMENT GUARANTEED

Apply or Address 2nd Floor Aetna Trust Building Indianapolis