

Bemidji, the Biggest Little City in the Northwest

Many Lines Of Business Represented

Many lines of business are represented in Bemidji. Among them are the following.

Abstractors, agricultural implement dealers, architects, auto livery, bakers, band and orchestras, banks, barbers, bicycle, repair shops, bill posters, billiards and pool halls, blacksmiths, booksellers and stationery, boat livery, boots and shoe shops, bottleworks, box manufacturing plant, building and loan association, carpenters, cigar manufacturers, cigar and tobacco dealers, civil engineers, clothes cleaners, clothing stores, coal and wood dealers, business college, confectioners, wholesale establishment, creamery, dentists, drug lines, druggists, dry cleaners, dry goods dealers, employment agents, elevator, express companies, ear, eye, nose and throat specialists, feed mill, florist, flour and feed dealer (wholesale and retail), furniture dealers, garages, grocers (wholesale and retail) gunsmith, hardware dealers, harness maker, hat cleaner, hide and fur tanners, horseshoers, hospitals, hotels, ice cream manufacturers (wholesale and retail) insurance agents, jewelers (manufacturing and retail), junk dealer, ladies ready to wear garments, lawyers, livery stables, logging companies, lumber manufacturers, saw mills, plainers, meat markets, merchant tailors, milliners, motorcycle dealers, music teachers, newspapers, oil companies, optometrists, packers, painters, photographers, physicians and surgeons, piano and organ dealers, plumbers, wholesale produce dealer, real estate and loan agents, restaurants, second hand stores, sewing machine agents, shing-

le and lath factories, shoe makers, sporting good dealers, tea companies, telephone exchange, theaters, tin and furnace dealers, undertakers, variety store and water and light and power company.

* **BEMIDJI, A CITY** *
* **WITH A FUTURE** *

Continued from Page 9

get it in the Birchmont hotel. If he wants to put a pack on his back and start off with his canoe, he has 40,000 square miles of territory to choose from, and a thousand lakes or streams to drop a line in. If Providence ever invented to create a paradise for the love of out-of-doors that Paradise is the district around Bemidji.

A City of the Future.

Beltrami county is blessed with a copious rainfall, the average annual precipitation being about 30 inches. The new settler has no dry farming problems to solve. Hot winds and destructive hail storms are unknown. As a matter of fact, the climatic conditions which confront the farmer are practically the same as those which confronted the pioneer in Ohio, Indiana, and Illinois. The water is not only abundant, but is pure.

Bemidji is indeed a city with a future, a city of promise. It has too much to offer not to continue to grow as it has grown, or with accelerated speed. To the young man it offers opportunity; to the old man, comfort and contentment; to the man with a family, a place where he can secure a home and independence; to the farmer, cheap land; to the manufacturer, cheap power and transportation; to the investor, unlimited chance to increase his fortune; to the seeker for pleasure, something that will appeal to the most pated taste;

to the invalid, health among the pines; to the common, everyday citizen, a home where he is as good as his neighbor, if he is honest and industrious.

Bemidji is a city of friendly, democratic, hard working, home loving citizens. It is the best type of a clean, hustling young community, built on the solid foundation of great natural resources, and its business men are taking the problem of developing those resources in a way that will not be denied.

Fred Behlke, P. O. Bemidji, R. F. D. 2—69 acres with 12 acres cleared; clay soil; on place ten years; has four horses, two cows, two hogs and 40 chickens; three persons in family.

* **BEMIDJI, MECCA FOR** *
* **MANY SETTLERS** *

Continued from Page 9

of the state will indicate how admirably situated it is geographically, for becoming the metropolis of the great north country. It is the logical commercial center of a territory embracing something in excess of 40,000 square miles, a territory which is developing rapidly.

Lake Adds to City.

Lake Bemidji, with its superb beaches, its waters of crystal clearness, its irregular shoreline, with wooded bluffs, and its waters teeming with gamey fish, adds, in every way,

to Bemidji's claims as a city beautiful.

A writer recently described the growth of the city as follows: "In its growth it has combined the characteristics of the oak with those of the mushroom, for with all its rapid development it has the stability which means a definitely prosperous future."

Do you know that the government crop reports of corn productions show that Minnesota averaged 42 bushels to the acre breaking every record and making Minnesota a great corn state?

Do you know that an average yield of 300 bushels of potatoes to the acre is not unusual in Beltrami county.

Bemidji Has Many Well Known Summer Resorts

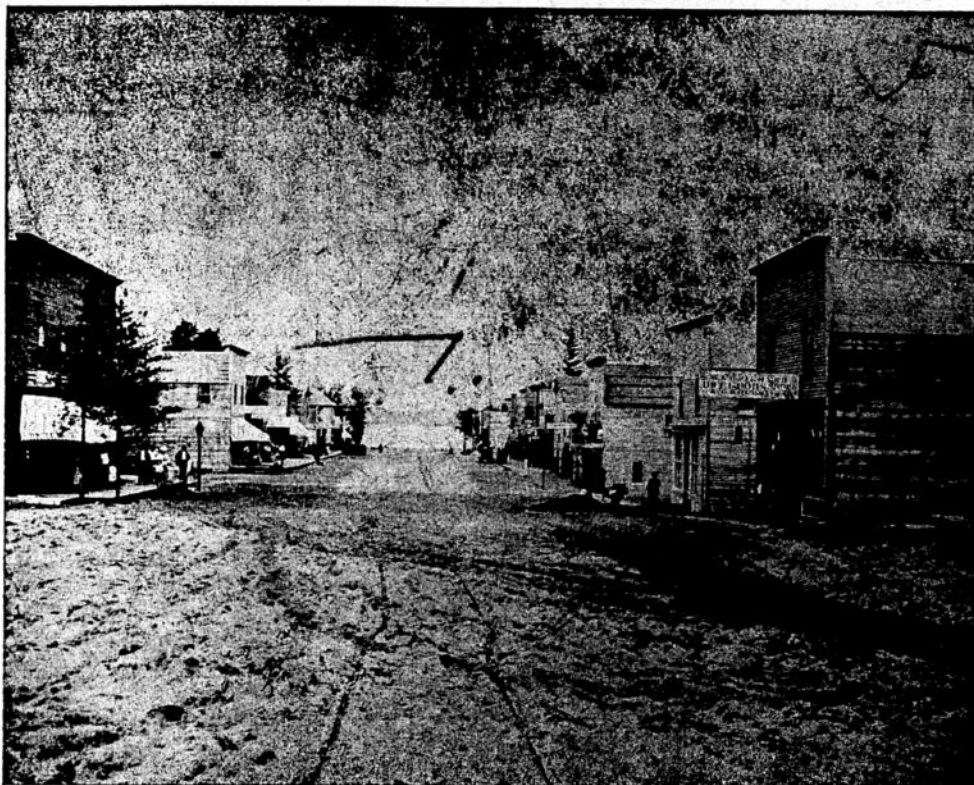
Bemidji has every advantage to make it attractive to tourists, vacationists and those desiring enjoyable recreation. Its climate is not to be surpassed anywhere and for scenic beauty it excels. The summer hotel at Birchmont Beach has but few if any equals in the resortdom of the entire United States. But this by no means is the extent of accommodations which are to be afforded summer visitors to this community. Jester's Farm Resort, located on beautiful Lake Plantagenet, is growing in popularity each year. This season it was filled to its capacity, many requests for reservations being refused. Then there is Wa-Ville, Buena Vista and numerous other favorite places. Additional cottages are being erected each year on the shores of Lake Bemidji and it will be but a short time before desirable lots will be at a premium.

Do you know that Alfalfa, the crop that quadruples land values is being successfully grown in Beltrami in the vicinity of Bemidji?

Do you know that the greatest change and development in all the country is taking place in Beltrami country agriculture?

Hello, boys and girls. Hear that school bell? Don't start for school without a NEW BEMIDJI lead pencil. It's the best nickle pencil made. Any store in town sells 'em.

* **Subscribe for the Pioneer.** *



Bemidji Street Scene in 1898.

KNOWLEDGE IS POWER

Prepair for Better Positions
by Attending

BEMIDJI BUSINESS COLLEGE

DAY AND EVENING CLASSES

For Particulars,
Call, Write, or
Phone 2

Bemidji Business College

Bemidji, - Minnesota

Accuracy

and

Prompt Service

has won for the

SATHRE ABSTRACT COMPANY

of

BEMIDJI, - MINNESOTA

an enviable reputation