

Children cry for  
G—P—S—S

VISIT  
**Yellowstone National Park**

Rainier National Park  
North Pacific Coast

AND  
**ALASKA**

This Summer

Go via the



Excellent train service, and  
the best dining car service  
in the world.

**Low Round Trip Summer  
Tourist Fares**

In effect on certain dates.

For details apply to  
**R. E. FISHER**  
Joint Ticket Agent  
Minnesota & International Ry.  
Union Depot

Send for free travel literature  
**A. M. CLELAND**  
General Passenger Agent  
ST. PAUL, MINN.

**DODGE BROS. CAR**

The best car for the money

sold by

**J. D. Steiner**

Cass Lake,

Minn.

**FARMERS**

I am making 3 and 5 year  
loans on improved farms,  
occupied by owners at

**7 per cent**  
Annual Interest.

**Clayton C. Cross**  
Markham Hotel Building

**FUNERAL DIRECTOR**

**M. E. IBERTSON**

**UNDERTAKER**

405 Beltrami Ave. Bemidji, Minn.

**EXTRA EXTRA**

For Two Weeks Only

We pay \$1.00 per 100 lbs for  
Rags, any description, does  
not have to be washed, bring  
in large or small quantities.  
Out of town people can ship  
and we pay the freight, we  
also pay the highest price for  
old rubbers, copper, brass and  
scrap iron, also calf hides and  
beef hides. At—

**Goldberg's**

**Wide-awake Shoe Shop**

Phone 638-W

112 3d St.

You'll want more

GRAP—S—

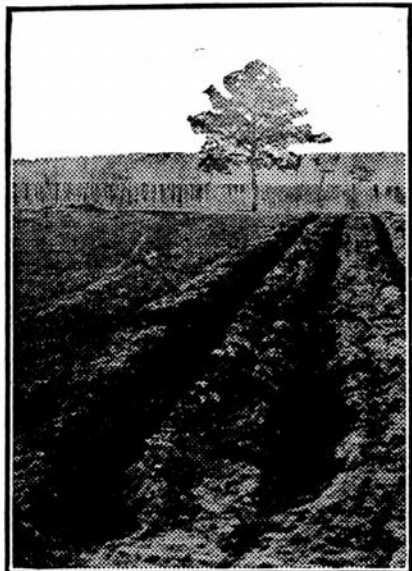
**Making the Little  
Farm Pay**

By C. C. BOWSFIELD

Celery is a crop that lends itself to modern methods of intensive farming. It is naturally a late summer product and helps to extend the growing season right up to winter without great risk of loss from frost.

There are many early crops that can be grown up to midsummer and made to yield a fine profit without extending over the whole season. Celery can be used as a secondary or follow up crop and thus increase the earning capacity of land to a high figure. As an illustration it may be stated that lettuce, peas, radishes, beets and a number of other products for which there is a keen demand in the spring run their course and are out of the way in ample time to allow for the setting out and cultivation of celery.

This thing of making land do double duty with crops that return large profits is not a theory or visionary



CELERY TRENCHES.

idea, but is in common and successful practice in the vicinity of all large cities. It is a plan that may be put in force on almost any farm, no matter how far it is from a market. Many of these paying vegetables do not require quick marketing, but the farmer can take them to the shipping station or his customers at regular intervals. A daily trip is not necessary unless production is on a large scale. Once or twice a week will do for these journeys to town. If located near enough to a city so that a private trade in garden supplies can be worked up it will pay the farmer to give regular daily attention to this branch of his business.

Every progressive man and woman in the country understands that the marketing end of farming is just as important as production, and with present facilities for sending goods by mail and express it is quite feasible to have a number of city customers who will take fresh garden supplies regularly and thus assist in making the farm pay. Celery cannot be successfully grown without moisture, especially at the time of setting out. Producers should be prepared to irrigate the crop in dry periods. The extra profits will pay for this additional work. Incidentally I may say that some cheap plan of irrigation would pay on almost any farm, certainly in any large garden.

Celery plants for commercial crops are pulled and most of the dirt shaken from the roots. The roots are then well puddled in rather thick mud, placed in boxes and carried to the garden. Dibbles are used in setting, care being taken to see that the soil is well firmed around the roots and the plants set no deeper than they grew in flats. After the plants have started to grow the rows are gone over with a two wheeled hand cultivator having the disks or small plows set to throw the soil away from the rows. The crust is broken up between the plants with weedeers or narrow hoes, at the same time uncovering those plants which were set too deep. The field is then cultivated to maintain a fine soil mulch two or three inches deep. No dirt is thrown against the celery during warm weather, as it is likely to cause the stems to rust. The plant should be sprayed with bordeaux two or three times before setting in the field and about every two weeks thereafter. Care must be taken that the hand cultivator in throwing soil away from the row does not disturb the plants or leave them too bare. Common methods for blanching must be observed.

Many expert growers of celery apply from 600 to 800 pounds of salt annually to each acre of land. A part of this is broadcast over the land in the spring and is harrowed lightly into the soil a week or so before setting the first crop of plants. While the crop is growing a second application of salt may be made. This method is advised whether the land is used to grow more than one crop of celery in a season or not. Growers say that salting makes the plants more brittle and tender, besides adding something to their flavor. In localities where there is plenty of alkaline salts in the soil it is unnecessary to adopt this practice.

While urging farmers to take up these money making plans, I wish to impress on their minds that each land owner has his own peculiar problems to study out. All farmers cannot go extensively into garden crops for reasons which are plain enough, but a great majority of them should do something with garden supplies for the city trade.

Pioneer want ads are read.



It's *two for one* tomorrow and as long as the supply holds out—two cakes of your favorite Palmolive for the price of one.

Just tear out the coupon that appears below. It's "legal tender" at any store where the soap is sold—

—will buy you one cake of Palmolive Soap if you buy another. You get two cakes for only 10 cents by presenting this *free 10-cent coupon*.

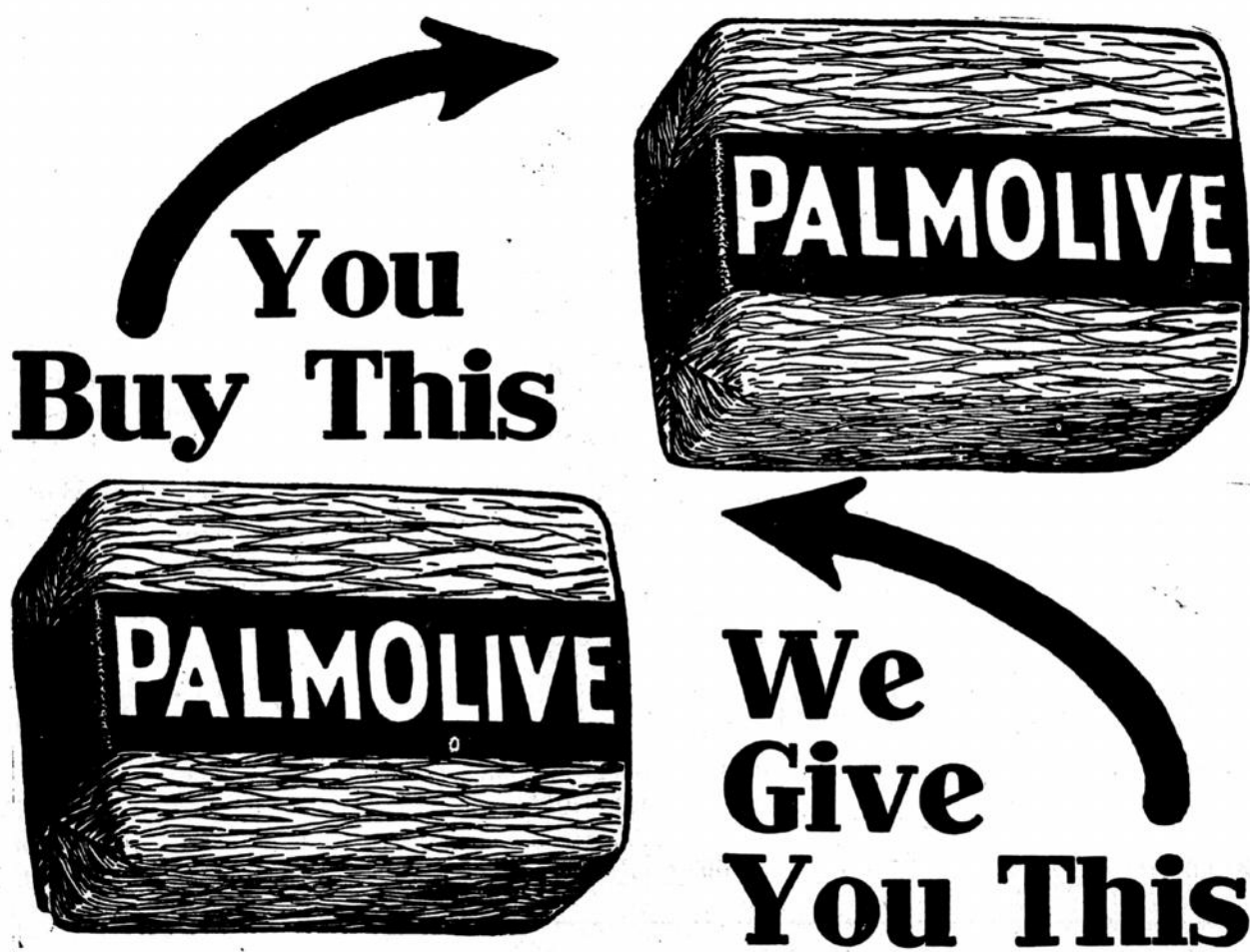
It isn't necessary, here, to dwell upon the excellence of Palmolive and the qualities which make it the great and favorite toilet soap.

If you have used Palmolive—once you know, and will be the first to use the coupon.

If you haven't, this is your chance to prove the truth of all you have read about Palmolive. To make an acquaintance of this great *Palmolive Olive oil soap*.

Take the coupon to any dealer that sells soap and he will honor it.

If You



This is the only  
olive Soap  
at the rule  
Only one  
family & the  
ceiving it  
I have  
one cake  
receiv-

NOTICE TO DEB  
It must be returned  
It must bear the name  
TIVELY WILL BE TO