



### REMOVE MALES FROM FLOCK

**Infertile Eggs Are Best to Keep and Cost Less to Produce—Send the Roosters to Market.**

(Prepared by the United States Department of Agriculture.)  
Produce infertile eggs. They are worth more, as they keep better and they cost less to produce since there are no roosters to feed. No expense, education, ability, or labor other than catching and killing or selling the roosters are necessary. Remove the males at once.  
While eggs are plentiful some should be preserved for the winter months, as they will be scarce and high priced. It costs but little in time, money and labor, and is so easily done that it is only common sense to do it. Use fresh, infertile eggs and let customers know that they can get such eggs as preserving. Those who have never preserved eggs should get in touch with the county or home demonstration agent, the state extension director, or the United States department of agriculture.  
Now is the time to begin culling flocks. Send the roosters to the shipping block or the market. Eliminate all weaklings and deformed chicks. Get rid of the chick that stands alone, the side of the coop with its wings down, its feathers ruffled, eye shut, and head down. Do not keep a single chick that you are not sure it will pay to raise.  
Shade, clean fresh water, clean coops, and clean houses and good ventilation and plenty of room during



**Shade and Clean Coops Furnished Young Chicks on Government Farm at Beltsville, Md.**

the night are of the greatest importance in growing healthy, strong, vigorous birds, whether they are for meat, eggs, or breeding.  
Growing chicks should have plenty of good, nourishing food. Bone meal should be fed liberally to those intended for layers or breeders.  
Do not forget to continue the fight on mites and lice. They must be fought all the time in all sections and in all seasons.

### IMPORTANT PART OF BUILDING

**Ceremonies More or Less Elaborate Generally Accompany Laying of Cornerstones.**

The United States government puts up public buildings all over the country, and a cornerstone is customarily laid. But there is no hole in the wall unless it is requested by the local authorities, or a Masonic body desires to conduct a ceremony.  
The Masons take a special interest in cornerstones. On such an occasion they appear in full regalia, and a couple box is used to hold the articles involved. The box is soldered up and placed inside the cornerstone, which is then sealed with cement.

In Europe it is a part of the business of monarchs to lay cornerstones. In this country the services of a president are always in demand for the purpose, if obtainable. On a conspicuous corner in Washington is a cornerstone laid by Mr. Taft when he was president. It was meant for a church that remains yet unbuilt.  
Colonel Roosevelt, when president, laid the cornerstone of the Masonic temple in Washington. Oddly enough it was 30 feet in the air at the time of the ceremony, upheld by timbers, the ground beneath it having been dug away to that depth. But it was necessary to grab the president while the grabbing was good.

### Probably Dogfish.

Blank had had a day off, and when he returned to the office the following morning his pals wanted to know why he looked so disgruntled.  
"Everything went wrong!" grumbled Blank.  
"How was that?" one asked.  
"Ever go fishing with a girl?"  
"Once."  
"Did she protest against hurting the fish?"  
"No. She said she was sure they were perfectly happy, because they were all wagging their tails."—London Tit-Bits.

### America's Store of Radium.

The total production of radium element in the United States up to this year is estimated at 55 grams. It was first produced in 1913. In which year 2.1 grams resulted; in 1915 the product was 13.6 grams. Charles H. Villi, writing in Science, estimates that the carnallite holdings of the Standard Chemical company should produce at least 800 grams radium.

### GOOD BLOOD ASSISTED DAIRY

**Good Dairy Bull, Purchased as Calf for \$100, Put at Head of Herd Is Good Investment.**

(Prepared by the United States Department of Agriculture.)  
A good dairy bull, purchased by a Montana county farm bureau member, cost \$100 as a calf; it was put at the head of a herd of ten cows, the average annual production of which was 4,800 pounds of milk and 200 pounds of butterfat. The daughters of the bull have now replaced the old cows in the herd and exceed the production of their dams by an average of 102 pounds butterfat and 1,828 pounds of milk per year. This improvement nets \$300 profit each year without taking into account the difference in value of the calves. A cow should "carry on" for at least six years, which would mean \$1,800 additional profit from the ten cows, because of the \$100 invested in the bull calf. "It was a bully good investment," says the farmer.

State of Ohio, City of Toledo, Lucas County, ss.  
Frank J. Cheney makes oath that he is senior partner of the firm of F. J. Cheney & Co., doing business in the City of Toledo, County and State aforesaid, and that said firm will pay the sum of ONE HUNDRED DOLLARS for each and every case of Catarrh that cannot be cured by the use of HALL'S CATARRH MEDICINE. FRANK J. CHENEY.  
Sworn to before me and subscribed in my presence, this 6th day of December, A. D. 1918. A. W. GLEASON, (Seal) Notary Public.  
Hall's Catarrh Medicine is taken internally and acts through the Blood on the Mucous Surfaces of the System. Send for testimonials, free.  
F. J. CHENEY & CO., Toledo, O.  
Sold by all druggists, 75c.  
Hall's Family Pills for constipation.

### Net Her Money.

I was expecting a call on the telephone from my wife at eleven o'clock one morning. Exactly at that hour my bell jingled, and taking down the receiver, I said: "Hello!"  
The response came: "Is that you, White?"  
"This is your honey, sweetheart," was my reply.  
In icy tones came: "You've got your nerve. Wait till I see your wife."  
Bang went the receiver.  
I recognized the voice as that of my wife's chum.—Chicago Tribune.

### Dodging Shep.

They struck up a conversation in the hotel lobby and finally one man suggested a trip to the movies. The other politely declined.  
"Don't you want to see Viola Vance?"  
"Nope."  
"Nor Yorick Hamm in his latest comedy?"  
"Nope."  
"What's the matter, my friend? Aren't you interested in the various stars?"  
"Not this evening. I'm an astronomer taking a night off."

## Automatic Gas Ranges with Fireless Cooking and Pastry Oven

Cabinet type ranges.  
Single oven type ranges.  
Kitchenette ranges.  
Hot plate cookers.  
Bath room vincent wall burners.  
Toasters.

Gas irons.  
Gas soldering iron furnaces.  
Automatic water heaters.  
Range Boiler water heaters.  
and appliances of every description.

**BEMIDJI GAS CO.**  
PHONE 76

## Speed—and the price of Meat

Forty-eight hours after cattle are purchased by Swift & Company they are hanging up as meat; within two weeks the fresh meat has been sold.

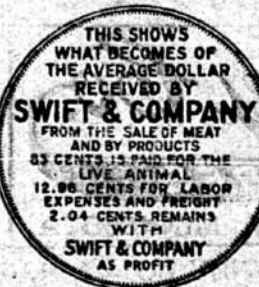
This speed means money in the pocket of the one who raises the live stock and of the one who eats the meat. It means a rapid "turnover" of capital and investment—making possible the transaction of daily business on a narrower margin of profit.

Speed permits Swift & Company to do a successful business on a profit of a fraction of a cent per pound.

Such speed with its rapid turnover and smaller profits would be impossible without the efficient organization and wide scope of Swift & Company, the results of fifty years' experience in handling meat.

Do you believe that government interference with the complicated and efficient machinery of the packing industry can be of any benefit? Experience with government regulation of railroads and telephone and telegraph might suggest an answer.

Swift & Company, U. S. A.



## When the Whistle Blows

—here's the real man's drink—Exelso!  
Refreshment with the noon hour—a strength-giver at the day's end—a friendly beverage for the evening!

**Hamm's Exelso**

**Different!**  
Hearty, without being heavy.  
**Better!**  
Nippy with the strength of purest cereals.  
**Satisfies!**  
The drink with "that good old taste."

Cafes, billiard halls and soft-drink stores serve this real man's beverage

Hamm Exelso Company St. Paul, Minn.

HAMM EXELSO CO. BEMIDJI, MINN.

