

BEMIDJI DAILY PIONEER

PUBLISHED EVERY AFTERNOON EXCEPT SUNDAY
THE BEMIDJI PIONEER PUBLISHING CO.G. E. CARSON, President
G. W. HARNWELL, Editor
E. H. DENU, Sec. and Mgr.
J. D. WINTER, City Editor

Telephone 922

Entered at the postoffice at Bemidji, Minnesota, as second-class matter,
under Act of Congress of March 3, 1879.No attention paid to anonymous contributions. Writer's name must
be known to the editor, but not necessarily for publication. Communications
for the Weekly Pioneer must reach this office not later than Tuesday
of each week to insure publication in the current issue.

SUBSCRIPTION RATES

By Carrier	By Mail
One Year \$6.00	One Year \$5.00
Six Months 3.00	Six Months 2.50
Three Months 1.50	Three Months 1.25
One Month .55	One Month .45
One Week .15	One Week .12

THE WEEKLY PIONEER—Twelve pages, published every Thursday
and sent postage paid to any address for, in advance, \$2.00.

OFFICIAL COUNTY AND CITY PROCEEDINGS

THE CROP PROSPECT

Each July we have come to expect in the daily press the first news of the year's crop where the optimistic booster tells of record-breaking yields and the pessimist brings out his yearly reports of rust, blight and other parasites. Between the two sorts of reports, it is most difficult to get a true line on the real crop situation.

The prolonged heat wave of the past two months undoubtedly has had its effect on crop production this year. Such unusual weather can not possibly be favorable to all crops. Premature ripening has unquestionably lightened the wheat, oats and barley crops, and the extent of this damage can only be determined at harvest time. The same heat, however, that blasted the grain crops, has produced a prospect for the greatest corn crop in the history of the northwest. It is the rarest sort of weather conditions that favor both grain, which needs cool nights and growing weather without excessive humidity, and corn, which needs the sort of weather most favorable to grain plant parasites.

Disregarding most of the current reports as to crop production, there is reason to believe that the northwest will produce this year a good average crop. This statement is based on the fact that in dry years the tendency is always to under-estimate the size of the crop finally secured, whereas, in wet years the tendency is to over-estimate both the size and the quality of the crop. The great size of the northwest and the great difference in its climatic and soil conditions practically assure a good average crop, year in and year out. This year should prove no exception to the rule. A particularly gratifying feature of the crop situation is found in the fact that farmers face a far more normal and sane condition in the market for all crops, as compared with the market one year ago. Furthermore, the cost of producing this year's crop is much less than the cost of last year's disastrous crop.—The Farmer.

IDEAS WORTHLESS UNLESS PUSHED

Ideas are the raw material of progress. Everything first takes shape in the form of an idea. But an idea by itself is worth nothing. An idea, like a machine, must have power applied to it before it can accomplish anything. The men who have won fame and fortune through having an idea, are those who devoted every ounce of their strength and every dollar they could muster to putting it into operation. Ford had a big idea, but he had to sweat and suffer and sacrifice in order to make it work. So had Edison. So had Rockefeller. So had Schwab. So had Woolworth. So had Frick. So had Bush. So had Harriman. So had Hill. So had Carnegie. So had Sears. So had the original Amour and the original Swift. So had Pullman. So had Jackling. So had Singer. So had McCormick. So had Goodyear.

Hatching an idea is only the beginning of the battle. The foundation for nearly every conspicuous American achievement, organization or institution was laid by the sweat and sacrifice and unconquerable perseverance of some man possessed by an idea he was willing to give his life for, if necessary. Don't make the mistake of imagining that an idea, no matter how good, can win its way in the world unless you have grit enough, backbone enough and enthusiasm enough to get behind it and push it with all your might. Success may seem to have come very easily to others. As a matter of fact, success rarely is easily attained.—Forbes Magazine (N. Y.)

COMPLIMENT TO BELTRAMI COUNTY

Beltrami county was paid a real compliment when the state officials, who were guests of the Civic and Commerce association last Wednesday, stated that before they decided on the location in which to start the soil survey, they looked over the state for a community which was showing outstanding activity in soil development, and which was backed up by a community where business and professional men were co-operating with the farmer in the land settlement and development. After investigation, they decided that Beltrami county was the place most entitled to the survey on the merits of their aggressive land clearing campaign and the co-operation shown by the business and professional men of Bemidji.

The result is that the townships on the southeast corner of Beltrami county will be the first to be favored with a report on the soil survey as conducted by the state under the appropriation granted for that purpose by the last legislature.

OVERHEARD BY EXCHANGE EDITOR

The serial story known as "The Tale of the Beltrami County Road Bonds" got another "to be continued" sign tacked to it at Bemidji last week. Our own opinion is that anyone who can't sell perfectly good bonds like this county has to offer would have difficulty in selling ice cream in hags. It looks as if somebody has fallen down on the job, but we don't know who it is.—Baudette Legion.

One of the most ominous things about American life is the increasing number of athletic young specialists who get all their exercise behind steering wheels.—Little Falls Daily Transcript.

Ten million people are reported to be starving Russia, that land of plenty. The Soviet government appears to be more successful in raising Cain than food.—Daily Journal Press.

New Jersey justice says hugging of girls steering automobiles must cease. It is a dangerous practice—many a man has been led into matrimony that way.—St. Cloud Daily Times.

Funny thing, this statesmanship. Sinks a lot of perfectly good German warships and then begins to build a lot more at \$40,000,000 per.—Hibbing Daily Tribune.

"Cy" Thomson was a great milker, as his picture in action only partly reveals.—St. Paul Dispatch.

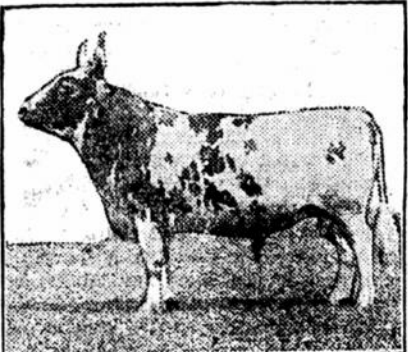
DAIRY HINTS

BULL ASSOCIATIONS HELPFUL

Acted as Wedge to Stimulate Dairy Interest and Promote Better Methods in South.

(Prepared by the United States Department of Agriculture.)
An example of how bull associations, organized through the help of the United States Department of Agriculture, act as a wedge to stimulate dairy interest and promote better dairy methods in a community is illustrated by the work which has been done in Spartanburg county, S. C. Five years ago little dairying was done in this county, according to dairymen of the department, but now the industry is making rapid progress and up-to-date methods are being practiced largely as a result of the organization of a bull association.

The interest in dairying dates from the beginning of the purebred bull movement in the vicinity of Campbellton in 1910. At that time a breeder, in



The Best Way to Improve a Dairy Herd is by the Introduction of a Purebred Sire.

the hope of starting an interest in better stock and creating a demand for his animals, presented a purebred bull to the community. Little interest was taken, and the gift was accepted with reluctance. The community was made up of small farms and there were few cows.

Following this a dairymen's picnic and exhibition of live stock was held, and as a result of extension work carried on by the dairy division of the department in co-operation with Clemson Agricultural college more people became interested and bought cows. In 1917 a co-operative bull association was organized, from which developed a live stock show, and the members of the association developed a keen interest in comparing the dairy animals they raised.

Another show was held in 1920, at which prizes, offered by merchants and bankers consisting of cash, merchandise, and savings accounts were awarded. One of the features of the show was a program of short talks on local problems by the county agent, leading farmers, and representatives of the commercial club and the State Jersey Breeders' association. As an indication of the interest that was aroused those attending the show voted unanimously to hold a community fair next fall, to include not only dairy stock but other agricultural products.

SPRAY TO KEEP FLIES AWAY

Best Time to Apply Repellent is in Morning After Milking or Early in Afternoon.

To keep cows quiet and contented they should be sprayed to keep flies off. A good time to spray is after milking in the morning and before milking time in the afternoon.

With a portable cart, made from a half barrel by attaching wheels and a spray pump and nozzle, two men can spray 40 cows in five minutes. Thirty gallons of mixture will spray 40 cows twice a day for 10 days.

Formula: 4½ quarts coal tar dip, 4½ quarts fish oil, 3 quarts coal oil, 3 quarts whale oil and 1½ quarts oil of tar. Dissolve 3 pounds laundry soap in water, add the above ingredients and bring the whole up to 30 gallons with lukewarm soft water.

PUREBREDS REPLACE SCRUBS

Nothing but Registered Sires Being Used at the Louisiana State Normal School.

"Within the past ten days we have sold to the butcher five scrub cows. We are now keeping only high grades and purebreds." With this explanation an official of the Louisiana State Normal school in Natchitoches parish enrolled in the "Better Sires, Better Stock" movement conducted by the United States Department of Agriculture and the various states. All the live stock on the school farm, which includes cattle, swine and poultry, are being bred only to purebred sires.

BEST TIME TO SELECT CALF

If Dam is Wide, Deep-Bodied Cow Giving Liberal Supply of Milk Useful Animal is Assured.

The best time to select a cow is at a few months of age, when it may be seen with its mother, or, at any rate, before it is weaned. Observe the calf's mother. If she is a wide, deep-bodied cow with plenty of size and is giving a liberal supply of milk, you may be reasonably sure that the calf, if sired by a good bull and properly cared for, will grow into a useful breeding animal.

Subscribe for The Daily Pioneer.

HAD NO CAUSE FOR WORRY

Under the Circumstances Wash White Could Afford to Live Life of Elegant Leisure.

Senator Gronna of Dakota was analyzing a political opponent at a Dakota luncheon.

"The man is bad through and through," he said. "He's actually so bad that he mistakes badness for goodness—is proud of himself, in short."

"By Jove, he makes me think of Uncle Washington White. As Uncle Wash loafed in front of the poolroom one morning the preacher's wife stopped and said:

"Washington, why don't you go to work?"

"Old Wash White, as he puffed serenely on his cornucop, answered: 'Because Ah got a wife an' children too suppo'—"

"But," the preacher's wife impatiently interrupted, "you can't support them by loafing here in front of this poolroom."

"Excuse me, Miss Fotherly," said Wash, with dignity, "Lemme finish mah remark. Wot Ah means to say is that Ah's got a wife an' children too suppo' me."—Detroit Free Press.

Second Hand Coffin for Sale

"Now that I have been resurrected from the grave to which my stomach trouble was fast leading me, and for which event I had made preparations, even to having bought my coffin, Mayr's Wonderful Remedy has made a new man of me and I feel as good as ever in my life, after having been at the point of death half a dozen times with acute indigestion and colic attacks."

It is a simple, harmless preparation that removes the catarrhal mucus from the intestinal tract and allays the inflammation which causes practically all stomach, liver and intestinal ailments, including appendicitis. One dose will convince or money refunded. At all druggists.—Adv.

SUNSHINE

SUNSHINE

GRINAGER'S

SUNSHINE GROCERY

Carry-a-Bit—Save-a-Bit

Tel. 851 120 Third St.

Creamery Butter—1-lb prints,

fresh41c

Sugar, 10-lb bags69c

Fresh Country Eggs, a doz.35c

Lard, in 10-lb lots, bring

your pail\$1.59

Palmolive Soap, 10 bars75c

White Luna, made by P. & G.

Co., 10 bars59c

Hand-picked Navy Beans,

10 lbs67c

Jam, 1lb net weight glasses,

pure33c

Oranges, Sweet Californias,

2 doz for52c

Brooms, well made, fair

quality55c

Sunshine Brand Coffee, 3

lbs for\$1.15

Catsup, 1 lb-2 oz bottle,

best quality, 40c value.....30c

Corn

Peas

Tomatoes

Cut Wax Beans

Prunes, California Sun-

sweets10c

Picnic Hams, a lb22c

Rubber Jar Rings, extra heavy

rubber, 15 values10c

Strawberries, No. 2 cans,

heavy syrup, 3 for89c

Peaberry Coffee, 5-lb

bags\$1.50

Peaberry Coffee, 10-lb

bags\$2.90

First Patent Flour, Head-

light, 98 lbs\$5.30

Call and see our Specials in

Cookies.

SUNSHINE

NOTICE

Ordinance No. 84, Traffic

Section 11 P. 8.

That upon the approach of any fire

apparatus, police patrol, or ambulance

every vehicle shall be drawn up as near

as practicable to the curb on the right

side of the street and remain at a stand-

still until such apparatus, police patrol

or ambulance shall have passed.

This law will be strictly enforced.

THOS. BAILEY,

Chief of Police

2407-28-29

Harley-Davidson Motorcycles

Bicycles and Supplies

GENERAL REPAIR SHOP

311 Sixth St.—Bemidji

\$5 REWARD

Will be paid to the person who locates a suitable house for rent. Reward will be paid when house is in my possession. House must contain at least four rooms, and rent must be reasonable. Call Tiller at Pioneer office.



OWN YOUR OWN HOME

We build modern Bungalows and Residences complete—and sell them to you on terms that you can meet—

WHY PAY RENT?

Select the home you want and we will build it for you. Talk it over with M. P. Amadon, manager of the

BEMIDJI HOME BUILDING CO.

Room 14, Battles Block

MOVING! MOVING!!

Saturday we will be doing business on the corner of Fourth and Minnesota Ave. Opposite City Hall.

SPECIALS FOR THE WEEK

Honey Suckle Syrup, a combination of honey and cane syrup, gal pails.... 90c
Oatmeal, 9-lb sacks 50c
Salmon, tall cans, 3 for 39c
Peaches, large cans, 3 for \$1.00
Corn, 3 cans for 29c
Pickling Spices, per lb 20c
Gloss Starch, 3-lb pkg 20c
Oranges, per dozen 30c
Oval Sardines, in spiced tomato sauce. 20c
Picnic Hams, per lb 19c
Bacon, narrow strips, per lb 20c
12-qt Galvanized Pails 30c

Remember — Corner of 4th and Minnesota

CLIFFORD & COMPANY

Your Teeth Are An Asset !

Personal Appearance—Are You Looking Your Best?
More Essential—Are You Feeling Your Best?

NOT WITH DECAYED TEETH!

To acquaint you with our methods of operation during this months to our patrons out of town—We Pay Railroad Fare One Way to anyone contracting with us for a reasonable amount of dental work.</