

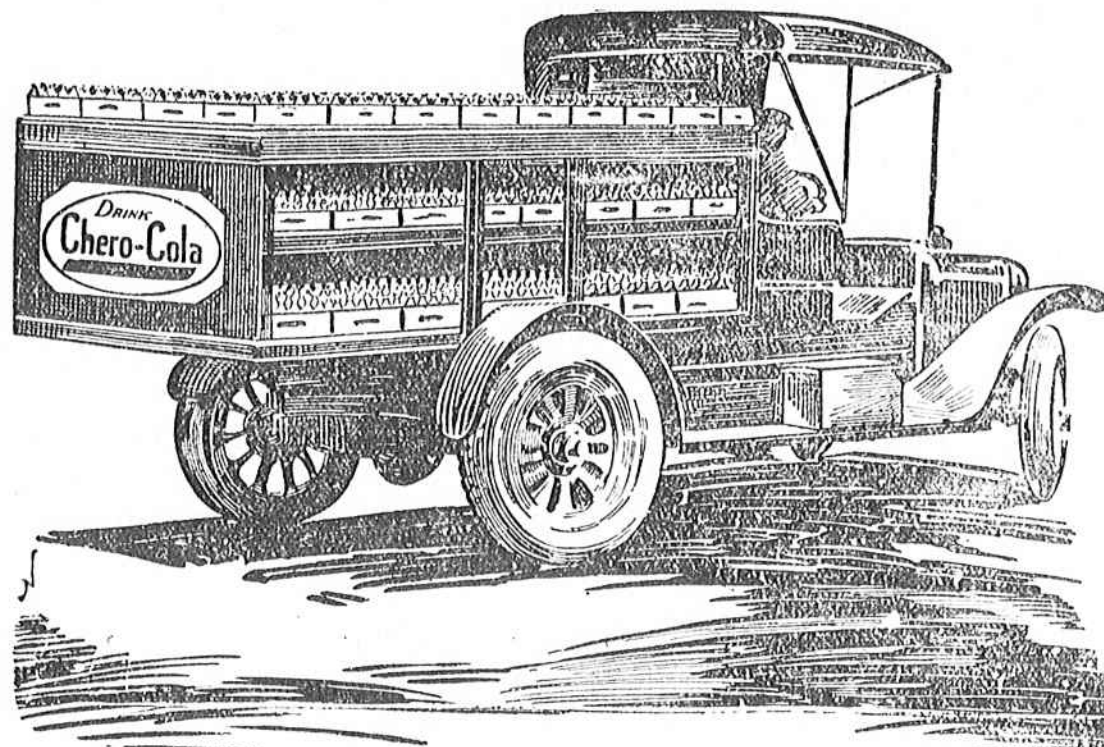
# Delivering the "Goods"

The connecting link between the Chero-Cola Bottler and the Chero-Cola consumer is found in the slogan—"perfect service."

Whether it be to serve soda fountain trade, grocery store or refreshment stand, this service is always the same.

The rapidly growing demand for Chero-Cola makes fleets of motor trucks do service to furnish the supply.

This is only one reason for Chero-Cola's unusual popularity.



## FIRE SWEEPS TWO BLOCKS

Lakeland, Fla., March 28.—Fire swept two city blocks here tonight and touched parts of three others, causing a loss estimated at between \$300,000 and \$400,000. Only a shift in the high wind, after two water mains burst, saved the city hall. The fire was bounded by Missouri and Fiuma avenues, Main street and the railway. Insurance carried was estimated at not more than 30 per cent.

## Sheriff's Sale.

COURT OF COMMON PLEAS, State of South Carolina, Clarendon County: W. T. Lesesne, Plaintiff—vs.—Levy Tindal and Willie Witherspoon, Defendants.

Under and by virtue of a judgment order of the Court of Common Pleas, in the above stated action, and to me directed, bearing date of March 16th, 1920, I will sell at public auction, to the highest bidder for cash, at Clarendon Court House, in Manning, in said County, within the legal hours for judicial sales, on Monday the 5th day of April, 1920, being a salesday, the following described real estate:

All that piece, parcel or tract of land lying, being and situated in the County of Clarendon, State aforesaid, containing twenty-five and three-tenths (25.3) acres, more or less, and bounded on the North and East by lands of Jackson Tindal; South by lands of estate of Alex Tindal and lands of Annie Witherspoon; and West by lands of Annie and William Witherspoon and lands of Leiser Tindal. Purchaser to pay for papers.

E. B. GAMBLE  
Sheriff Clarendon County.

## SHERIFF SALES

COURT OF COMMON PLEAS, STATE OF SOUTH CAROLINA, CLARENDON COUNTY. Beck & Greer Hardware Company, Plaintiff—vs.—

Charles W. Pickering, Defendant.

## NOTICE OF SALE.

Under and by virtue of a Decree of the Court of Common Pleas in the above stated action to me directed, which Decree is dated September 29, 1914, I, E. B. Gamble, Sheriff of Clarendon County, will sell to the highest bidder for cash, at public auction, in front of the Court house door in the town of Manning, S. C., on Monday, April 5th, 1920, being a salesday, within the legal hours of judicial sales, the following described real estate:

All that tract or piece of land situate, lying and being in the town of Manning, in the County of Clarendon, and State of South Carolina, being lot No. 4 fronting on West Boundary Street, according to a map of the town lots of the J. M. Bradham property of record in the office of Clerk of Court for Clarendon County, measuring seventy-five (75) feet on West Boundary Street, its eastern line is seventy and one-half (70 1/2) feet on its western line, and one hundred and sixty-five (165) feet on its northern line, and one hundred and seventy-nine and one-half (179 1/2) feet on its southern line. The said lot being bounded as follows, to-wit: On the North by lands of Estate of Joseph F. Rhines; on the East by West Boundary Street; on the South by lot of Mrs. Annie W. Pickering; on the West by lot of Aaron Abraham. The said lot being conveyed to me by J. M. Bradham by deed January 7th, 1907, and of record in R. M. C. office for Clarendon County in book U-3 on page 701.

Purchaser to pay for papers.  
E. B. GAMBLE  
Sheriff of Clarendon County.

## NEW HOURS PLANNED

New Orleans, March 28.—Directors of the New Orleans cotton exchange announced today that beginning Monday, the exchange here would open at 8 o'clock a. m. and close at 4 o'clock in the afternoon, except Saturday, when it would close at 10 o'clock in the morning.

## Double Seal Piston Rings for Automobiles Are Guaranteed.

We Guarantee Double Seal Rings to give entire satisfaction. When a FULL SET is properly installed, if, within 60 days after purchase, the user should become dissatisfied with the rings, we will refund the money we receive for them upon receipt of the rings, and the original invoice showing purchase. The rings should be returned through the channels received. Ask for "KEEP UPKEEP DOWN."

## COLUMBIA SUPPLY COMPANY

823 West Gervais St.

Columbia, S. C.

## BRADHAM'S

# Duroc Farm!

Breeders of

Registered Duroc Jersey Hogs

MANNING, S. C.

## PEDIGREE CHICK CARRIES MANY CREDENTIALS

Tag on Foot and Then on Wing Enables Breeders to Establish Accurate Records—Carefulness Essential in Raising Purebred Birds

To keep a complete breeding record of even a small flock of chickens is not an easy task as anyone who has

had any experience knows, but accurate records are of inestimable value in building up breeds and flocks and are well worth the time expended in obtaining them.

The first step in the work is the recording by a leg-band number or some other accurate means of identification of the male and female which have been mated together. With the aid of a trap nest each egg is identified and immediately marked with the number

of the hen that laid it. The eggs from one hen are put into a separate wire basket or netting bag in the incubator. By this means each chicken, when it hatches, will be inclosed and have a label on it which will identify it with its dam.

When the chick is removed from the incubator a band is put on the leg with an individual number. This is also recorded in the chick index.

When not more than 16 hens are kept, the toe punch can be used successfully for identification purposes. The punch is made in the web of the baby chick's foot. All chicks by the same dam are given the same toe punch. To make sure that the holes haven't grown together, it is an excellent plan to go over the chickens about two weeks after the first punch and if the hole has filled in, punch it out again. This usually results in a permanent mark.

When leg bands are used the chicks must be looked over frequently to make sure that the bands are not becoming too tight. A tight band will prevent proper circulation and might cause fatal injury. Regular inspection, however, will avoid any such danger.

## Putting Ring in Wing.

When the chick is about 6 weeks old the band is removed from the leg and inserted in the wing. To do this, one of the chicken's wing is spread and held against the light. A point is selected about one-fourth of an inch from the edge of the wing where there are no large blood vessels and with a small penknife a clean incision is made. There will be little or no bleeding from the wound. One end of the band is slipped through the hole and the ends are brought together. If there is no fastening the ends are simply lapped. The ring should not be pressed together or the circulation will be cut off and the chicken may lose the band. When the fastening is completed, the band should be in ring form.

This wing ring gives a permanent mark which will last years. Usually, however, when the chicken reaches maturity, the breeder puts on a leg band in addition as this is easier to read. Better still, a band is put on each leg so if one is lost the bird still can be identified.

## WHAT YOU NEED TO START IN SQUAB-RAISING BUSINESS

The back-yard poultry keeper can hardly hope for success with turkeys, geese, ducks, or guineas, but for those who have lofts over a garage, stable, or coal shed, the opportunity for squab growing is well worth considering.

For food purposes pigeons are usually classed with poultry. Culturally they are in a class by themselves, producing meat only, producing it very quickly, and able to produce well under conditions that do not admit of growing any other creature used for food.

While the ideal arrangement for pigeons is to have their house on the ground, and a small covered yard, called a "fly," connecting with it, pigeon keeping may be carried on quite extensively in upper rooms, or lofts, with or without open-air flies. Many flocks of pigeons are kept in large cities in quarters provided for them in the lofts or on the roofs of buildings used for mercantile and manufacturing purposes.

A space 6 feet square and high enough for the attendant to stand erect will accommodate 8 to 10 pairs of pigeons for squab breeding. The poultry specialists in the United States Department of Agriculture say, the birds mate and begin breeding when 6 to 7 months old. The male shares with the hen the duty of incubation. The young hatch in about 17 days. At 4 weeks old, average squabs will weigh about three-quarters of a pound each. Some of the larger ones will weigh over a pound at that age.

A good pair of breeders will produce six or seven or more pairs of squabs a year. As many as 11 pairs of squabs have been produced by 1 pair in a year. When production is high the female lays and begins incubation while she has young still in the nest, leaving the care of them to her mate.

Raising squabs has been increasing in cities in recent years. On farms the tendency has been the other way. On a farm a flock of free pigeons, if not kept down by killing off the increase, soon become a nuisance, destroying grain and doing a great deal of damage, especially on new-seeded ground.

## EIGHT THOUSAND DIE OF MASSACRE

Constantinople, Mar. 27.—Estimates of casualties in the massacres at Marash, sent here by Americans place

the loss of life at about 8,000 Armenians. During the disorders 150 Turks were killed.

There are 10,000 Armenian refugees in Marash of whom 2,000 are sheltered in American orphanages and hospitals. Americans are also caring for wounded Turks, but there is great suffering at Marash because of a lack of supplies and nurses. A wagon train of American supplies was pillaged early in March between Antak and Marash. Forty per cent of the buildings at Marash were destroyed or rendered uninhabitable during the massacres. Nearly all the shops were destroyed and more than half of the churches and mosques were laid in ruins.

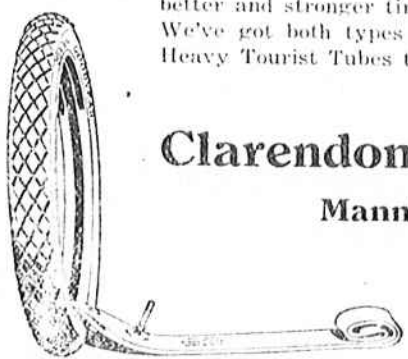
The hills are so full of armed bands at present that traveling is almost impossible, but two more American doctors are now on their way to Marash from Adana, under guard of Turkish gendarmerie.

## We've Got Two Types in GOODYEARS in the Clincher Tire Sizes 30x3---30x3 1-2---31x4

A real tire for the Ford, Maxwell, Chevrolet, or any car that uses Clincher Tires.

The single cure Goodyear in the smooth or anti-skid tread stands way above any other tire in its own price field. And the Goodyear two cure with the All-Weather Tread—at a little higher first cost—more than lives up to its name as a bigger, better and stronger tire for the lighter cars.

We've got both types in stock. With Regular or Heavy Tourist Tubes to match.



Clarendon Motor Co.,  
Manning, S. C.

## We Are Headquarters for Nitrate of Soda

in quantities from ten tons and upwards. We have sold during the past ten days a large tonnage of this material, and while prices have advanced during the past week it is still cheap compared with other ammoniates. Get our prices before you buy.

MANNING OIL MILL.