

# THE YELLOWSTONE MONITOR

THE OFFICIAL PAPER OF DAWSON COUNTY

Volume 10—No. 8

GLENDIVE, MONTANA, THURSDAY, April 9, 1914

Eight Pages

## Prof. Wilson Addresses Chamber of Commerce

Instructor From State Agricultural School Addresses Members on Better Farming Methods Thursday

The first good results that the newly organized Chamber of Commerce have brought about was in making it possible for Professor Wilson of the Montana State Agricultural College, to address the gathering of the business men of the city at the initial bi-weekly luncheon today. Professor Wilson's lecture related to what the business men and farmers are most interested in throughout the whole northwest. He reminded his hearers of the fact that the solution of the question of prosperity for farmers and merchants as well, was in a good system of diversified farming. He called attention to the fact that better farming in other localities has been the reason for better land values. The better farming movement was initiated by the farmers of North Dakota, especially the bankers of that state, who realized that inasmuch as the raising of small grain was but temporary, without a practical diversified system, the wealth that had been invested would each year depreciate. Dakota's plan has proved successful. The plan by which the better farming campaign may be carried into execution is partly thru information received from instructors sent out from the state schools where better methods of farming are desired. The laws of the state of Montana provide

that in any county where 51 per cent of the voters are in favor, the county commissioners are empowered to appropriate an amount not exceeding \$100 per month for the employment of an instructor to teach better farming methods. In the case of Dawson county the Glendive Chamber of Commerce have offered to meet half the expenses of an instructor.

Prof. Wilson called attention to the fact that in order to get the most out of the land the farmer must pay great attention to stock. "If farmers go in for stock," he said "the long wished for lower rates of interest will be secured." Attention was called to the experiments made with corn at Wibaux. He displayed several samples of corn that was raised at Wibaux which yielded in the numbers of bushels as high as 54 to the acre under normal climatic conditions. In this section the corn needs a different system of culture. He considered the most desirable variety to be the Mandan Indian corn which was matured by the Mandan Indians decades ago and who are considered by scientists to have been the best farmers of corn of any tribe of North American Indian. This variety of corn grows very close to the ground and cannot be harvested in the same manner as the other corn. The most practical way

is to run it through the thresher which may undergo a few changes in the concaves, rather than husking in the ordinary manner.

In his twenty minute stereopticon lecture he dwelt upon the use of the pit silo, which is nothing more than a large cistern properly covered. Professor Wilson illustrated in conclusion a better method for the raising of alfalfa. It may be raised by the dry farmer with equally as good results as can the farmer with irrigated land but not, of course, with so large a yield. It is quite certain that in the near future there will be an instructor employed in Dawson county who will help in the organization of farmers clubs, in teaching the farmer better methods of agriculture, building of silos and especially in the culture of corn, the raising of which will assure a most prosperous community.

### Chamber of Commerce Aim To Secure Farming Instructor

During the past week L. A. Rasmussen in behalf of the Chamber of Commerce went before the County Commissioners for the purpose of ascertaining the sentiment of the county board regarding their setting aside an appropriation for the payment of the salary for an instructor in farming. As provided by the laws of Montana the county board if they see fit may set aside an amount for the purpose suggested. The newly organized Chamber of Commerce offers to foot half the expense occasioned by an instructor for a year. His work will be to assist in the instruction of the farmer or anyone else who may be interested in the methods of better farming. It is the intention of the Chamber to secure an instructor from State Agricultural School in Bozeman. In the event an instructor is engaged

his lectures will occasion several meetings during each season of the year. The campaign of lecturers and meetings will redound to the benefit of everyone within Dawson County.

### County Treasurer Barnett Tenders Resignation

County Treasurer L. R. Barnett tendered his resignation yesterday, to take effect on June 1. Mr. Barnett has felt for some time that his health demands more of his time in the open and he realizes that the office he now has charge of does not give him ample opportunity to be out of doors as much as he would wish.

His work as a county official has been most praiseworthy. Everyone with whom he has become acquainted will regret that he has been forced to make this decision. During the summer to come he will reside two miles from the city of Missoula, where he has a home. The best wishes of a community attend him.

### Order Permitting An amended Complaint In Metcalf Case

Judge C. C. Hurley has filed an order permitting the Attorneys for complain out Carrie Metcalf to file an amended complaint in the divorce case which has been pending against James Metcalf, her husband. The suit for accounting has been denied upon demurer but permission for the filing of an amended complaint regarding the divorce itself has been granted.

### Charged With Grand Larceny

D. R. Babcock from the Burns country was arranged before Justice Keane on Friday charged with the theft of a young calf. He will be given a preliminary hearing on the 14. His bond was set at \$1000.

## Petition For Wibaux County Granted

After Four Years Consistent Campaign Wibaux Proponents Succeed In Securing Petition. Sufficient Valuation In Territory

After four years of "watchful waiting" and a consistent campaign the progressive little city of Wibaux has finally been able to secure a new county out of the territory tributary to them. They came before the county commissioners last week fully prepared. The valuation was sufficient and the number of petitioners great enough to satisfy the board that their request for a county was a worthy one. Attorneys Steve Leahy and Judge Loud represented the proponents. Attorney Ed Booth, of the Baker contingent had a few withdrawals to enter before the county commissioners gave assent to the resolution that in all probability will occasion the creation of the new county of Wibaux. That Wibaux will be the new county seat is nearly a certainty as is also the probability that an election in the proposed territory will carry. In brief, the new county embraces a territory running to the north line of township 19. On the west the county line comes within eighteen miles of Glendive. On the south the new county will cut into Fallon county nearly 80 miles to township 10. The new county will include Dennis but will exclude Carlyle. The amount of valuation will exceed three and one-quarter millions which will leave in

Dawson, if the proposed county of Richland carries, more than eight millions valuation. The probabilities are that when it comes to a vote, which will most likely be on Aug. 1 or thereabouts, the electors in the territory proposed will indorse the proposition by a vote of 3 to 1. Unlike the proponents of Richland, from the results and the length of time it took the board to decide the Wibaux contingent, had everything in readiness. When they presented their proposition and showed what they had to submit in proof of the sincerity of their electors it was readily seen that they had the goods. The granting of their request was a matter of mere formality. Even Ed. Booth seemed at the start to realize that all the Wibaux bunch had to do was to file their petitions and await the result. No excitement marked the proceedings as in the case of Richland. No writs of certiorari will be filed. There is no doubt as regards the result of the election. Wibaux is to have a county all her own after years of patient effort to create one. They have demonstrated the efficiency of a good campaign. They came with the proper credentials and returned the winners. Noble effort on their part has brought to them the results they had so long anticipated.

# The Monitor Automobile Contest

## THIS CONTEST

Is not conducted by some Cheap Out-Of-Town Piano Factory. The MONITOR is running its OWN CONTEST.

We buy the Car and turn it over to the Winner.

Until the Car is placed on exhibition, it can be seen at any time at Ed Haskell's Garage.

"Every Dollar Counts One Hundred"

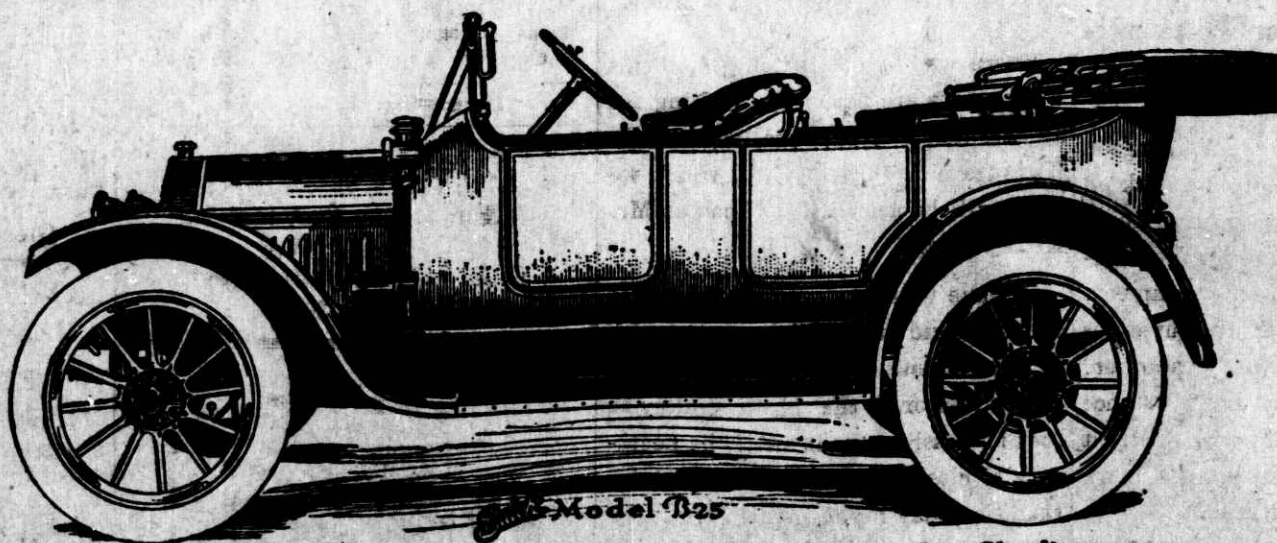
## Rules Governing This Contest

1. There will be one capital prize—a 1914 model, BUICK, 5-passenger Touring car valued at \$1,150. Other prizes will be announced later.
2. This contest will be open to all men, women and children of reputable character. Employees and relatives of employees of the MONITOR are positively prohibited from entering this contest; also churches, schools and secret organizations.
3. Everybody is entitled to nominate a candidate. Just send the name and address of contestant you desire, to the MONITOR office. This will entitle the party to 5000 votes and the name will be entered as a candidate.
4. No votes will be accepted unless accompanied by the money collected.
5. Every contestant, not a prize-winner, remaining actively in the contest, from the time of entrance UNTIL THE CLOSE WILL BE GIVEN BACK IN CASH FIVE PER CENT OF ALL THE MONEY TURNED IN BY THEM personally during the life of the contest.
6. Three judges will be selected, who will count the ballots and check the results and announce the successful candidates.

## To Further Increase Its Rapidly Growing Circulation THE YELLOWSTONE MONITOR

Is Offering a Prize of a Handsome, Electric Lighted, Electric Starter, 1914 Model B 25 BUICK 5 Passenger Touring Car, to the Man, Woman or Child Receiving the Largest Number of Votes in this MONITOR AUTOMOBILE CONTEST Which Opens at Once.

Everybody Is Invited To Get In



This Buick Model B 25 is valued at \$1,150.00 delivered in Glendive

**IT HAS:** The Delco System Self-Starter and Electric Lights, Nickel Trimmed Lamps, Electric Horn, Robe Rail, Extra Demountable Rim, Tire Irons, Set of Tools, Mohair Top and Dust Hood, Rain Vision Wind Shield. See Yellowstone Garage Display Ad in this issue for full description.

To enter this contest, all you have to do is to cut out this coupon, fill in your contestant's name and address, send it to the MONITOR office and then get busy and work.

START RIGHT  
NOW  
WHILE THE  
STARTING IS  
GOOD

Ask us for a  
Black Catalog

### Free Nominating Coupon

GOOD FOR 5000 VOTES

The Monitor Contest Office  
PLEASE NOMINATE:

NAME

P. O. ADDRESS

IN YOUR MONITOR AUTOMOBILE CONTEST

Only One Nominating Coupon Is Granted For Each Contestant

"DO IT NOW"

DETACHED COUPON FOR NOMINATING ONLY

REMEMBER  
THAT "WELL  
BEGUN IS  
HALF DONE"

Ask us for a  
Black Catalog

## VALUE OF CERTIFICATES

### New Subscriptions

Six Months, \$1.00 counts 200 votes  
One Year, \$2.00 counts 400 votes  
Three Years or longer, every dollar counts 300 additional votes.

### Subscriptions In Arrears

Every Dollar collected counts 100 votes

### Job Work And Advertising

Every Dollar collected counts 100 votes

## Rules Continued

7. THE "BALLOT BOX" will remain in the office of the MONITOR until two weeks before the close of the contest when it will be removed to some business house on Merrill Ave. During these two weeks the Ballot Box will be securely locked and sealed and votes will not be counted, so that one candidate will not have any knowledge of what another candidate is doing.

8. During the time that the Ballot Box is in the MONITOR office, the votes shall be counted once a week, and the result announced later. Any errors made from week to week will thus be corrected.

9. Any and all errors in count, at any time, will be rectified by laying the matter before the Contest Manager.

10. Votes are not transferable after being cast. Friends of Candidates can mail their votes to candidates direct or to the Monitor Contest Manager.

11. No candidate will be permitted to lead an opponent by more than 10,000 votes in any one week. Such may hold as many votes in reserve as desired.

12. CERTIFICATES will be issued in various denominations for payment of subscriptions, etc., according to the schedule announced elsewhere.