

We Are Now Ready

## TO BUY CORN

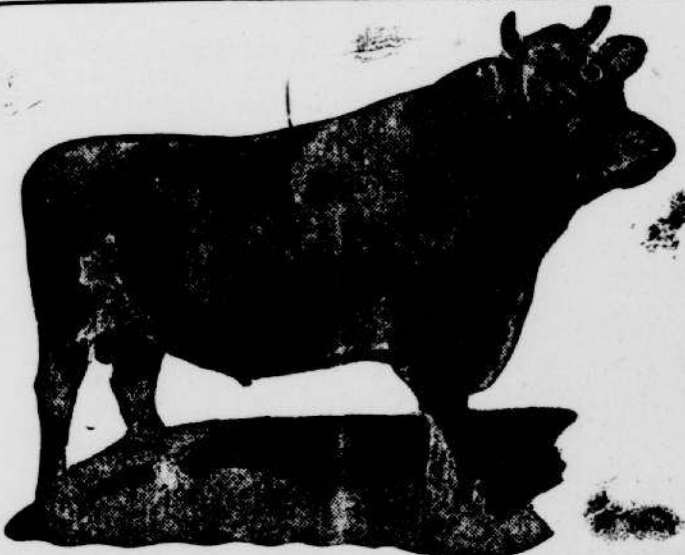
We meet all prices. -- 144 pounds to the barrel. Corn must be sound and well broken. :: :: :: ::

George Greig & Company

Near Railroad

WE SELL AND DELIVER COAL.

### Grand Champion Jersey Bull



The Jersey bull declared grand champion at the 1916 National Farm and Live Stock Show in New Orleans, is owned by Mrs. H. H. Galbraith, Knoxville, Tenn. Many animals of this class will be shown at the 1917 Show in the Crescent City, November 10-19.

## THE TECHE GARAGE

FRANCIS BIENVENU,  
PROPRIETOR.

All kinds of repairs promptly done.

All kinds of Tires and Accessories for Automobiles.

### Laizaire Bienvenu

ST. MARTINVILLE, LOUISIANA

FOUNDED 1792



FIRE INSURANCE and  
REAL ESTATE Agent

Big Reliable Companies

SOLICIT A PART OF YOUR BUSINESS

L. L. MARTINET  
Contractor and Builder.  
ESTIMATES FURNISHED.  
Agent for the Edward Metal  
Ceiling and Roofing.  
ST. MARTINVILLE, LA.  
Box 342

#### Second Hand Brick For Sale.

A large amount of second hand brick for sale at \$6 per thousand. By the Town of St. Martinville.

SEE THE MAYOR

### Arrangements For Christmas Mail.

1. With the approach of the holiday season, special attention is being given to the delivery of Christmas mail to enlisted men serving abroad. Arrangements have been perfected by the Navy, War and Post Office Departments whereby Christmas mail to American Expeditionary Forces in Europe and to the crews of the U. S. Naval vessels serving in European waters will be delivered by Christmas morning. Without the fullest cooperation on the part of the public it will be impossible to accomplish this result.

2. The families and friends of enlisted men are urged to observe the rules by the Navy, War and Post Office Departments, particularly in three essential respects:—

1. Mails to reach sailors and soldiers by Christmas must be posted not later than November 15th.

2. Every package must bear conspicuously the words "Christmas Mail," the complete address of the person for whom it is intended, and, in the upper left-hand corner, the name and address of the sender.

3. Every parcel must be so packed and wrapped as to admit of easy inspection by the postmaster. No parcel will be dispatched to Europe which has not the postmaster's certificate that it contains no prohibited articles.

4. All mail for men serving on board vessels of the Atlantic Fleet and in European waters should be addressed to the U. S. S. ...., care of Postmaster, New York, N. Y. All mail intended for men serving in the Pacific and Asiatic Fleets should be addressed to U. S. S. .... Asiatic Station, via San Francisco, Cal., or U. S. S. .... Pacific Station, via San Francisco, Cal.

5. Recruiting Officers are instructed to give this information prompt and wide publicity

#### L. BIENVENU

AGENT FOR

TIMES-PICAYUNE  
NEW ORLEANS ITEM

Take subscription by the week,  
month and year.

WE DELIVER PROMPTLY.

#### Catarrhal Deafness Cannot Be Cured

by local applications, as they cannot reach the diseased portion of the ear. There is only one way to cure catarrhal deafness, and that is by a constitutional remedy. Catarrhal Deafness is caused by an inflammation of the mucous lining of the Eustachian Tube. When this tube is inflamed you have a rumbling sound or imperfect hearing, and when it is entirely closed, Deafness is the result. Unless the inflammation can be reduced and this tube restored to its normal condition, hearing will be destroyed forever. Many cases of deafness are caused by Catarrh, which is an inflamed condition of the mucous surfaces. Hall's Catarrh Medicine acts thru the blood on the mucous surfaces of the system.

We will give One Hundred Dollars for any case of Catarrhal Deafness that can not be cured by Hall's Catarrh Medicine. Circulars free. All druggists, 75c.

F. J. CHENEY & Co., Toledo, O.

FOR SALE — House and lot on Port street with several pecan trees on said lot for \$635. Will give terms if desired Laizaire Bienvenu.

#### FOR SALE

Twenty-one acre farm partly in the Corporation of St. Martinville at a very reasonable price, will make terms to suit. Laizaire Bienvenu, Real Estate Agent.

### LOCAL NEWS.

Mr. Louis Delaurel of Midland was visiting here this week.

Miss Lilla Mouton of Lafayette was visiting here this week.

—Mr. L. J. Gardemal made a business trip to New Orleans this week.

Mr. Frank Ledoux of Port Arthur is here on a visit to his mother, Mrs. Auguste Ledoux.

—Dr. C. E. Simon of Jackson, La., was here this week visiting his parents, Judge and Mrs. James Simon.

Mr. Amedee Demurger returned from New Orleans Wednesday, with his mother, whom he had taken to New Orleans for special treatment.

Mrs. L. C. Beslin, after remaining here several months, left Wednesday to meet her husband in Oklahoma, her brother, Martial Bienvenu accompanied here.

The gumbo given by the ladies last Saturday for the benefit of our poor people, realized the neat little sum of \$40.00 which is very satisfactory.

We do all kinds of Printing

### PARISH FAIRS WILL MAKE DINE DISPLAYS

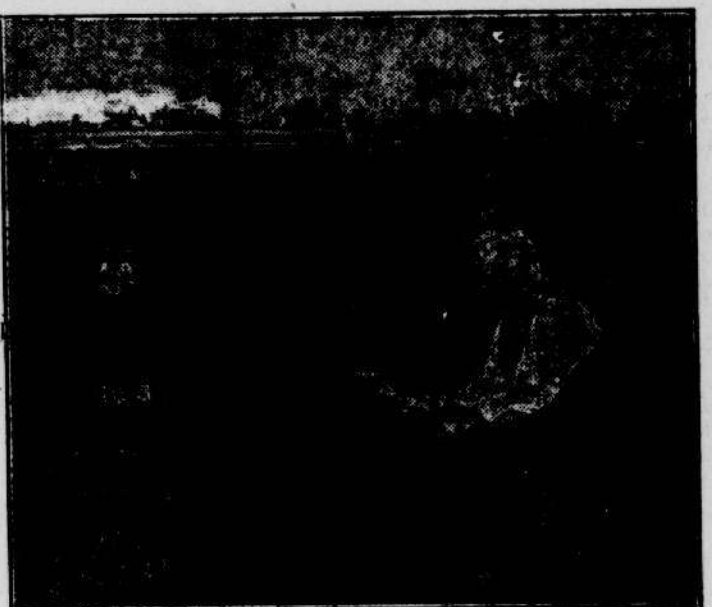
The parish fair contest at the Louisiana State Fair this year will be one of the big features of the annual exhibition. Rivalry between the various parish organizations and individual farmers is unusually keen and the parish competition promises to be the closest on record. Close to two dozen parish booths are expected to be filled by the contestants. Several have already made known their intention of participating and others are planning to be represented with large displays, with particular attention given quality of the exhibits and attractiveness in arrangement.

In the parish fair booths there will be thousands of individual exhibits, and hundreds of different kinds of farm products will be represented. The individual exhibits may be entered in competition for general premiums offered for individual products, in addition to forming parts of the parish displays. Practically all agricultural products grown in Louisiana will be represented, and the numerous exhibits will give an idea of the state's immense farm possibilities. Each booth will be 10x20 feet, and attractively arranged, as general appearance counts in the parish fair contest as well as quality of exhibits.

The fair association offers \$1,000 for this contest. It will be distributed to the ten parish associations making highest scores. In addition, the state association gives \$100 to each parish fair exhibitor not capturing prize money, and \$50 to each parish fair winning prize money, this all being in addition to the prizes, to help defray expenses.

For further information, write to W. R. Hirsch, secretary, Shreveport, La. Remember the State Fair opens October 31 and runs six days.

### New Orleans Fair Grounds Has Demonstration Farm



This is a section of the ten-acre demonstration farm at the Fair Grounds, New Orleans, where the National Farm and Live Stock Show will be held, November 10-19. About eighty varieties of food and feed crops are growing on this farm. The insert shows I. B. Ronayson, general manager of the big fair.

## COME IN

and see us the next time you are in need of

## GOOD PRINTING

We are specialists in the kind of work that pleases.

A trial is all we ask.