

ADVERTISERS HAVE HELPED US HELP OTHERS! Comrades, Come Across!

C. M. STEELE
Grocery and Confectionery
Stock always fresh. Least possible prices
PACIFIC AND GRAND

For high grade Watches see
A. J. MOHN
1416 HEWITT AVE.

D. KAMERMAN
Everett's Reliable Jeweler
1616 Hewitt Avenue
Ind. 227X Sun. 500

EVERYTHING IN COMMUNITY SILVER

AUSTIN'S, 2004 Hewitt Ave.

The
Commercial Press
Printers
Manufacturers of
RUBBER STAMPS
2931 Lombard Everett

Chris Culmback
FOR
TOBACCO
CIGARS
CANDIES
1405 Hewitt Ave.
PHONES 237

FOR
HEATING AND PLUMBING
CALL
H. C. BROWN
2825 Pine Street
Ind. 603 X Sunset 327

WESTBERG GROCERY
Staple and Fancy Groceries
Phones 42 2933 Broadway
We Give Green Trading Stamps
EVERETT, WASH.

Our Shoes Are Better
Fisher, the Shoeman
Cor. Hewitt and Wetmore
Fifteen Years in Everett

THE EVERETT BATHS
First Class
BARBER SHOP
2821½ Wetmore

American Dye Works
LEADING CLEANERS
Phones 248

Independent Phone 440Y
A. ANDERSON
LADIES' AND GENTLEMEN'S TAILOR
2809½ Colby Ave. Everett, Wash.

Westberg Grocery

STAPLE AND FANCY GROCERIES
BOTH PHONES 342 2933 BROADWAY

Loren Thomas Frank Vallier
PARIS LAUNDRY
We guarantee all our work
and prices are right.
2818 Grand Avenue
Phones 1167

KITTLESON GROCERY CO.
Good Things to Eat
Phones: Ind. 47, Sun. 1840.
1701 Wetmore Ave.

J. C. SOVDE
GROCERIES, DRY GOODS AND NOTIONS
3419 Everett Ave., Cor. Summit
Phones: S. S. 1818, Ind. 470

EDW. ECKLUND
Dealer in Fancy and Staple
GROCERIES
Phones 328
2707 Wetmore

THUESON GROCERY CO.
Agent Dr. Fahrney Medicines
Groceries, Flour, Feed, Fruit and Vegetables
1209 Hewitt Avenue
Phones: Ind. 14X, Sunset 1856

MOON & REEP
Successors to
REEP GROCERY
1912 Hewitt Ave.
Phones: Sunset 197, Ind. 437

HIGH SCHOOL GROCERY
Both Phones 1166—25th & Colby
HIGH GRADE GROCERIES
Our Motto, Quality and Service

CHARLES L. LINDBLAD
Staple and Fancy Groceries,
Fruits, Flour, Hay and Feed
Sun. 1064, Ind. 465X
LOWELL WASH.

WOLD BROS. & WEST- LUND
Nineteenth and Broadway
Dealers in Fancy and Staple Groceries, Dry Goods, Drugs, Grain, Feed & Flour.
Sun. 357 Ind. 315

An Economical Place to Trade
MODEL SAMPLE
No More \$2.50 No Less
SHOE COMPANY
For Men For Women
The Upstairs Shoe Shop That Saves You Dollars
How do we do it? Small expenses Low rent, no clerks to pay
FOBES BUILDING, Room 18
Next Door to Star Theater
1806-1808 Hewitt Avenue
UPSTAIRS

UNION OYSTER AND CHOP HOUSE
CARL ERICKSON, Prop.
We Cater to the Working Men
1717½ Hewitt Avenue
ALL WHITE HELP

RILEY-COOLEY SHOE CO.
1712 Hewitt Ave.

IMPORTANCE OF ORGANIZATION

By Walter B. Ford
(In The Issue, Elizabeth, N.J.)

What is the greatest need of the Socialist movement today? Ask this question of any Socialist and he will give you but one answer. The greatest need of the Socialist movement today is ORGANIZATION. The most noticeable thing in the Socialist movement is the absolute lack of organization. This lack of organization is appalling, and even though we recognize our own weakness, yet we are doing nothing to remedy it.

In order to achieve success in anything we set out to accomplish we must have a weapon. The most effective weapon which the labor union can use on the economic field is organization. The most effective weapon which the Socialist party can use on the political field is organization. The industrial organizations on the economic field and the Socialist party organizations on the political field are the immediate means by which we work to establish the industrial commonwealth. The progress that is made upon these two fields depends upon the EFFICIENCY OF OUR ORGANIZATION. The sooner we realize, and then act upon the realization, that the progress of our movement keeps pace with the efficiency of our organization, the sooner will the Socialist movement in the United States attain success.

Our need just now is for men and women who can lay out a program of work and see that it is carried out; for men and women to organize the work of systematic literature distribution; for men and women to organize the work of a poll and survey; in short, for men and women who can carry on this systematic work of our organization, for it is the systematic work that counts.

In all parts of the country the work of our movement is being carried on in a haphazard fashion. Our campaigns are haphazard. Our collection of dues is haphazard. The Socialist movement loses annually thousands of dollars through our careless and unsystematic method of dues collection. We have no method of collecting campaign funds from sympathizers. In fact, our whole propaganda has for the most part been carried on in an unorganized, unsystematic manner.

OUR GREAT TASK
This is the task of the Socialist movement before it can attain success. We have got to whip into shape an organization that will compete with the organizations of the capitalist class. We have got to train ourselves in methods of organization before we can successfully combat the wonderful organizations of the capitalist class which its wealth and power have been able to buy. Socialists

THE DIFFERENCE
(From the Weekly Kansas City Star)
Labor and Socialists

To the Star: What is the difference between the American Federation of Labor and the Socialists?—Star Reader.

The American Federation of Labor is a labor union. The Socialists are a political party.

The American Federation of Labor is a present day opportunist organization that does business in a practical work-a-day world where the wage system is in use.

The Socialists do not believe in the wage system and are chiefly interested in its overthrow.

The American Federation of Labor believes in organizing the workingmen into unions, so that by "collective bargaining" improvements can constantly be made in increased wages, reduced hours and changing conditions, until, in the fullness of time the workers shall get the full product of their toil.

The Socialists believe the labor movement should become a political party, and being a workingman's party it would be the Socialist party; and by using its political strength pass laws abolishing rent, interest and profit and usher in the "co-operative commonwealth."

The American Federation of Labor is a voluntary, democratic organization that believes the workers should work out their own salvation, grouping themselves as they best see the need, either in craft or trade unions or in industrial unions, as they prefer. The Socialists believe it is necessary for the workers to be formed in

are generally bankrupt in both time and money. There is only one thing in which we excel the capitalist class. We have the numbers. The task for us is to utilize those numbers in the most effective manner. In order to make the work of the individual lightest we must build our organization on many shoulders, that is, we must divide and specialize the work. We may as well recognize right here and now that it will not be a beggar working class that will attain the Co-operative Commonwealth; not a motley crowd of men and women thrown by evolution into a system of society which we call Socialism, but it will be an organized body of men and women who know what they want and how to get it, and who know how to organize themselves for the attainment of their goal.

A GUIDED EVOLUTION
It is about time that we Socialists realized that evolution does not run wild, that evolution has been guided and directed by the capitalist class. We may as well wake up to the fact that from now on we must build up an organization, not only to bring about our social order, but to TAKE CARE OF IT WHEN WE GET IT. The local or organization that allows its members to sit in headquarters, smoke their pipes and debate as to how soon the Co-operative Commonwealth will arrive is not the organization that will accomplish the downfall of capitalism.

Not an uncommon saying among Socialists is, that Socialism is the next step in society, that evolution will bring us from capitalism to Socialism. Well, don't be too sure of it. There is just as good authority in the saying that the next step in society will be a short stage of industrial despotism. In fact, taking into consideration the present European war, the preparedness propaganda in the United States and the uncertain effect which the war will have on labor conditions generally, the prospects of such a stage of industrial despotism are good, or literally speaking, bad.

Yes, Socialism may be hastened or retarded by the blind, irresistible forces, just as the invention of machinery hastened the dissolution of feudalism, but Socialism may also be hastened or retarded by the amount of power which organization alone can give us, in keeping evolution in its proper channels.

Organization is the problem that faces the Socialist movement and until we have organization we will never have power. Until we can successfully manage our own organization we will never be given charge of a city, state or nation, and the sooner we become convinced of that fact and then put our convictions into action, the sooner will we achieve success.

WHITMAN ON WAR

O God! that whole damned war business is about nine hundred and ninety-nine parts diarrhoea to one part glory. The people who like the wars should be compelled to fight the wars; they are hellish business, wars—all wars. Sherman said "War is hell"; so it is; any honest man says so—hates war, fighting, bloodletting. I was in the midst of it all—saw war where war is worst—not on the battlefields, no—in the hospitals; there war is worst; there I mixed with it; and now I say, God damn the wars—all wars; God damn every war; God damn 'em! God damn 'em!—Walt Whitman.

Now that the details are all in, the only reasonable conclusion is that the Persia torpedoed herself.—Nashville Southern Lumberman.

A politician's idea of a demagog is a man who is making a bigger hit with the public than he is.—Boston Transcript.

Industrial organizations and that the American Federation of Labor should by power of majority vote force or drive all workers into that form of union.

The American Federation of Labor believes in the use of conciliation and arbitration in the adjustment of labor disputes and in the sacredness of contracts solemnly entered into. The Socialists as a rule do not believe in contracts at all. Contracts give employers too much security during industrial ferment and prevent the workers taking advantage of the employers' unpreparedness.

TRADE ON ROCKEFELLER AVENUE AND SAVE MONEY

IS IT SO?

The above statement of (save you money) is made by a great many firms, and no doubt when they make it they really believe it a fact; so, when writing it today, we asked ourselves—**IS IT SO?**—and if so, how can we prove it? We know that every store in the country sells Red Seal Gingham, A. F. C. Gingham and M. F. C. Gingham at 12½¢ yard; our price is 11¢ yard. You take the best Galatea they advertise at 18¢, and some at 20¢; our price is 15¢. Then, there is 19¢ Play Suitings, 32 in. wide; our price is 14¢. We do not believe there is another store anywhere that sells American Calicoes at 5¢ yard. You take our Corsets (Henderson and La Princess)—we think they are the best Corsets made; we can show you the selling price all over the country, and then we take off 25¢, 50¢, and \$1.00, according to the grade. And we know hundreds of other items that we do **SAVE YOU MONEY ON.**

HOW CAN WE DO THIS YOU ASK—THE ANSWER IS EXPENSE ACCOUNT

No rent to pay—we own our own store building, and that alone saves us \$3,000 to \$5,000 a year—a nice profit itself. Then again, we buy for spot cash, and get every cent of discount possible. Our motto has always been—

BETTER GOODS FOR THE SAME MONEY—SAME GOODS FOR LESS

Dolson & Smith

THE STORE AROUND THE CORNER ON ROCKEFELLER AVE.

IF YOU CAN'T SEE---SEE US!

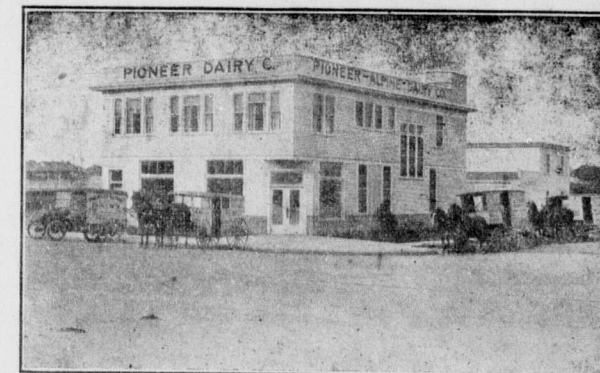


Phone 288—EVERETT OPTICAL CO.—2812 COLBY AVE.

EAT AT THE MAIZE

Everett's Popular Cafe

1705 Hewitt Ave., Everett, Wash.



PIONEER-ALPINE DAIRY

C. CARLSON, Manager

MODERN AND UP-TO-DATE—WHOLESALE, RETAIL

Milk, Cream and Whipping Cream

Phone: Sunset 1835

Phone: Ind. 271

Corner 26th and Broadway, Everett, Wash.

We Make Our Trunks and Sell Direct to You



LADIES' HANDBAGS, GRIPS, SUIT CASES, UMBRELLAS AND REPAIRING

At the

Everett Trunk Factory

2815 Rockefeller Avenue