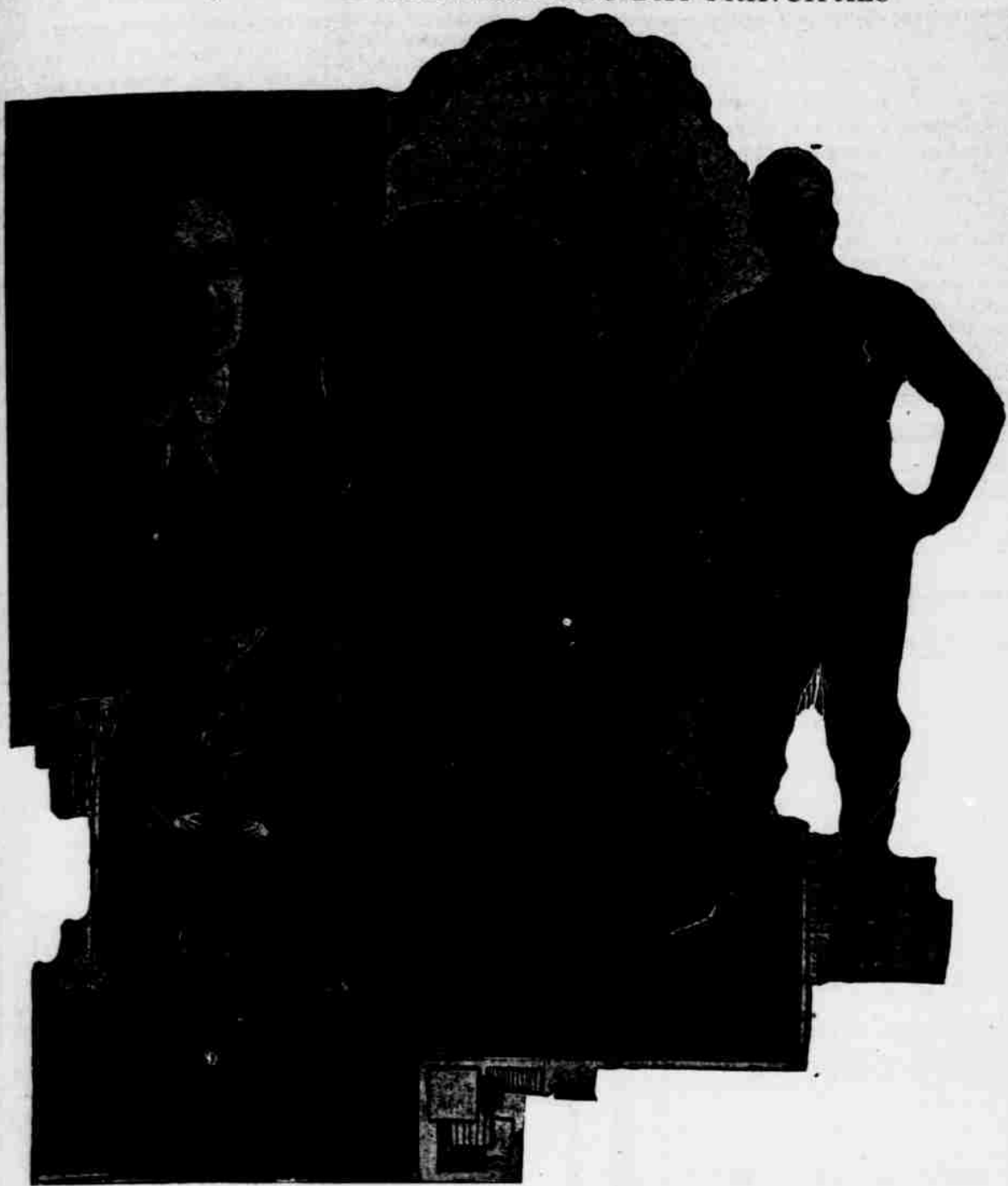


## THE JAYHAWK THANKSGIVING DAY PRINCIPALS



Upper Left: Coach "Beau" Olcott; center: Captain Adrian Lindsey; right: Woodward, star backfield man, of a famous K. U. athletic family; lower left: Neilson, the Jayhawker who crossed the Nebraska goal line.

## KANSAS ELEVEN BEST IN YEARS

Jayhawker Team, Averaging 190 Pounds From Tackle to Tackle, Has Steadily Improved Since Oklahoma Game.

When the whistle blows Thanksgiving day to start the twenty-fourth annual Missouri-Kansas gridiron battle, it will send into the fray one of the strongest teams that the Jayhawkers have boasted of in many years. It is a team that has developed from what seemed to be one of the poorest Kansas teams into a strong contender.

is also one of the best place and drop kickers of the season, although he has not had an opportunity to show what he can do in the kicks from the field. As a passer he is among the best. His passes to Shinn in the Cornhusker battle netted 35 yards. Woodward is also a passer of some ability. A glimpse at the line-up will

one of the most dangerous men in the Valley when carrying the ball, and is likewise an excellent passer. Foster weighs only 139 pounds and hails from Missouri territory—Joplin.

## Kansas Has Three Star Ends.

Shinn, Reid and Heath make up the end positions of Olcott's machine and they are capable men, too. Shinn, the sensation of last year's first-year team, is easily the star this year. He has received passes from all angles and also skirts end for good gains. Reid is also a first-year man, while Heath was on the 1915 team.

Burton and Frost, each a second-year man, are the tackles. Burton was out of school last year, but was all

of the game, but it must be considered that Olcott has developed his team to a large extent in the last few games especially the Oklahoma and Nebraska contests.

## Team Started Off Poorly.

The first Kansas battle of the season was waged against the Emporia Normals and resulted in a 13 to 0 victory for the Kaw River boys. The Kansans failed to pile up the large score that they expected, and were lucky to win. On straight football Kansas carried the ball 178 yards, while the Normals made 113 by the same route. Kansas tried 8 forward passes and completed 3. The Normals tried 20 and completed 8. Kansas suffered 120 yards by penalties and the Normals only 20.

The following week saw the conflict with the strong Illinois team in which Kansas was completely outclassed. Zuppke sent a team of substitutes against the Jayhawkers in the second half, and in this period the Kansas defense showed up to a better advantage.

## Didn't Show Well Against Ames.

Kansas made a poor showing against Ames, but it must be considered in this game that the Kansans were materially weakened the week before when they met Illinois. Olcott's pupils made only two first downs during the entire game and these were made in the last quarter when Ames was using five substitutes. The defense of the Kansans was strong with the exception of the third quarter. Ames made 14 first downs as compared with the 2 by Kansas. The Iowans lost 65 yards by penalties and Kansas lost 10. On straight football Ames lugged the spheroid for a total of 269 yards, and Kansas 59. Mayer's pupils tried 8 passes and completed 5 for 10 yards. Kansas tried 4, but they were interrupted by the Iowans.

The Aggie-Jayhawker contest turned out to be a scoreless draw, but the Olcott machine had many chances to score. Both squads fought their hardest, but for offensive playing the Jayhawkers must be given credit for an awful array of onslaughts against the Aggie stone wall. K. U. made 143 yards on straight football, while the Aggies made 180. Kansas made 8 first downs to the 14 by the Manhattanites. The Jayhawks tried 13 passes and completed 2 for a gain of 20 yards. Clevenger's pupils completed 5 out of 11 attempts netting 57 yards.

## Kansas in Form Against Sooners.

The Oklahoma game was a battle of forward passing, giving the Kansans their first victory over the Sooners since 1910. Kansas made 14 first downs, while the Oklahomans made 12. Kansas tried 13 passes and completed 4 for a distance of 103 yards. The Sooners completed 7 out of 22 attempts for 139 yards. This game

marks what might be considered the turning point of the season for Kansas for in it the Sooners were played off their feet in the first quarter, and the Kansans showed strong in all departments of the game.

The Washburn affair was nothing more than a practice for the Kaw River team for only a few regulars were used. The 27-to-0 victory tells nothing of the strength of the Kansans at that time. Kansas made 11 first downs to the 5 for Washburn, and carried the ball 178 yards on straight football, while Washburn made 68 by the same route. The penalties were about equal.

## At Their Best Against Nebraska.

The Nebraska victory shows the Jayhawkers at their best. Statistics of the game accurately tell a strange story. Nebraska made 290 yards in scrimmage play, while the Kansans made 142. The Cornhuskers made 16 first downs to 7 by the Kansans, and all of these were made in the third quarter. In penalties Nebraska lost 25 yards and Kansas 10. Nebraska

completed 5 forward passes for a total distance of 33 yards; Kansas finished 3 for a gain of 33 yards, one of them being a spectacular heave by Lindsey for a distance of 34 yards. It was the whirlwind attack in the third quarter that won for Kansas. The first half was all Nebraska. The Cornhuskers gained almost at will until they advanced into K. U. territory, but never were they within the 25-yard line of the Crimson and Blue. The Cornhuskers were allowed to advance the ball when they had it, but as soon as Kansas obtained it they punted for great distances. In the third quarter, after the Nebraska had worn themselves down, the Jayhawkers opened up and put the game on ice and then returned to their former tactics.

## Father of Henry B. Harris Is Dead.

By United Press  
NEW YORK, Nov. 25.—William Harris, aged 71, father of the late Henry B. Harris, noted theatrical producer, dropped dead at his home at Bayside, L. I., this afternoon.

## SURPRISE

Your friends and relatives by sending them your picture this Christmas.

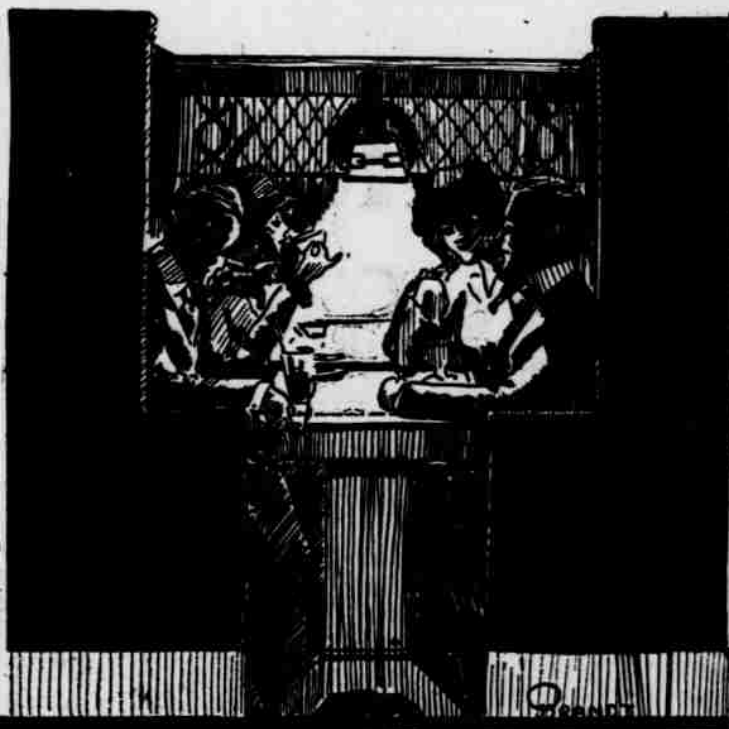
12 PHOTOS—12 GIFTS  
Make your appointment now

Phone 779 Red

## The Clucks' Art Studio

Second Floor  
Exchange Nat. Bank Bldg.

No stairs to climb,  
Take the elevator.



If you can't go to the big game for the Thanksgiving holidays, you can sleep late in the morning and then know that you can always get a delicious breakfast. If you go to the game you can get a hurried lunch on the way to the 12:45 special.

## The Palms

## We Want Help!

Every County Club in M. U. is  
Entitled to a Representative in the Ad Club

In order that the Ad Club may perfect its organization before Christmas, every county club in school should select a representative at once. Send the name to the President of the Ad Club, 718 Maryland Place.

Each University Division should elect its two Representatives at once.

## The Ad Club

of the University of Missouri

The one university organization with a purpose

JAYHAWKERS (reading left to right) W. O. Hamilton, manager; Russell, h. and q.; Woodward, half; W. H. H. end; Palkwocky, g. and t.; Olcott, coach; Ruble, guard; Smith, guard; Clark, assistant coach; Minor, center; Hall, center; Martin, tackle; Frost, tackle; Burton, tackle; Wilbur, tackle; Ruble, f. and h.; Smith, end; Gregory, substitute; Woody, guard; Lindsey, capt. q. and h.; Fluke, half; Shinn, end; Reed, end; Kabler, tackle; Pringle, half; Arnold, full; Bradley, substitute; Neilson, full; Foster, quarter; Cowgill, half; Lastett, end; Todd, q. h.

for the Missouri Valley championship.

The team has been developed by men from different parts of the country, who have driven into their proteges that particular style of football used by their Alma Maters. Hamilton, as head of the athletic department, is a graduate of Kansas. "Beau" Olcott is a former Yale man and has given to his team the Eastern style of play. "Potsy" Clark was a backfield star in his college days and hails from Illinois, thereby giving the Big Nine tactics to the Jayhawkers. McCarthy, freshman coach and scout, is also a representative of the Big Nine school of football, coming from Ohio State.

## Line Averages 195 pounds.

The Kansas line is heavy, averaging 190-195 pounds from tackle to tackle. The ends are of average weight. The backfield is heavy with Lindsey at quarter, but with Foster it will be comparatively light, for the latter weighs only 139 pounds. The team has been a strong defense this year, especially so in the Nebraska game, when they kept the Cornhuskers from crossing their 25-yard line. They will doubtless surpass any team in the Valley in the kicking and passing phases, for Lindsey has averaged more than 45 yards on his punts and some of them have been good for 60. He

serve better to illustrate the ability of each man.

## Lindsey Is Peer of the Valley.

Captain Lindsey is the best all around man in the Valley. He is a star kicker, punting on an average of 50 yards, and as to his drop kicking ability—well, ask anyone that saw the swimming contest last year. He also does the passing, and is one of the best men on the team when it comes to lugging the ball around the end or hunting a hole in the line. He is playing his third year on the team and weighs 170 pounds. His position is left halfback.

Fast, the star halfback, is playing his second year on the team. When he went into the game against Nebraska there was no stopping him. He repeatedly charged off the tackles and cut in for end runs for good gains. He is one of the most brilliant backs in the Valley, and to him and Neilson goes the credit of making the defeat of Nebraska possible by their consistent gains.

Neilson at fullback, Woodward at half and Foster alternating with Lindsey at quarter make up the backfield of the Jayhawkers. Neilson is a second year man, while Woodward, who returned from the border only two weeks ago, brought a world of strength to the camp on McCook field. He is

Missouri Valley tackle in 1914. They weigh about 190 pounds each, and are largely responsible for the strong defense that has marked the Jayhawkers this year.

Martin and Vernson are holding down the positions of guards, being graduates of the freshman team of last year. These men are heavy and will give the Kansans lots of strength in the line.

Miner, a graduate of the 1915 squad, is playing his first year at the pivot position and is a heavy man.

## Some Good Substitutes, Too.

Wilson at end, Pringle at halfback and Smith and Kabler at tackles are the pick of the substitutes. All showed up well when used against the Washburn team when the regulars were resting, and if called upon in the Tiger-Jayhawker struggle, they will give a good account of themselves.

The Jayhawkers lost five 3-year men last season and all were stars. These were Captain Reber at end, Keeling at center, James at tackle and Groft and Strothers at guard. All of these were linemen, but have been replaced by men of strong caliber.

A glance over the review of the Jayhawker season will give an idea of how the Kansans have compared with their opponents in the various phases