

THE OLD RELIABLE



THERE IS NO SUBSTITUTE

DECIDE TO ACCEPT THE FORMER BID

Capitol Commission Lets Contract for Carpenter Work to Butler-Ryan Co.

Conforming with the decision of Assistant Attorney General Donahower, that such action would be valid, the capitol commission yesterday awarded the contract for the interior woodwork to the Butler-Ryan company on a bid of \$111,703, which was submitted last June. Two other companies also submitted bids at that time, the Bohn Manufacturing company, St. Paul, \$113,287, and the Stillwater Manufacturing company, \$114,872.

After some debate among the members of the commission some of whom thought it better to advertise for another bidding, it was decided that both time and money would be saved by closing with the Butler-Ryan company on their own figures at once. The bidding for the painting and glazing work will be advertised for again at once.

The marble stone work also awarded to the Butler-Ryan company upon their bid of \$782,000, submitted last December. In this latter contract, however, the commission reserves the right to make such changes in the way of substitution of materials as it may hereafter deem good and proper. In the marble and stone work, two other bids were submitted—one by the Pickle Marble and Stone works, St. Louis, Mo., for \$833,375, and the other from the Perini Stone and Marble company, \$832,375.

In consideration of the fact that the funds are lowering very appreciably, it was decided to issue and sell more certificates of indebtedness. The month's budget of \$39,760 was passed.

Our Safety Deposit Vaults are the best. Security Trust Company, N. Y. Life Bldg.

PROFIT IN DAIRYING AMOUNTS TO MILLIONS

Increased Output of 20 Per Cent During the Past Year.

The biennial report of the state dairy and food commission, made public yesterday, shows that there are at present 800 creameries and cheese factories in the state, with an increased output over the last report of 20 per cent.

At the close of last year there were in Minnesota 800 creameries, which 382,256 contribute milk to the creameries, with a total pecuniary result of \$14,000,000.

The total result of the creamery output of 1902 was \$14,000,000, which was an increase over the two preceding years of \$4,000,000. The annual ship-

THE POPULAR GROCERY.

SCHOCH
GROCERIES EXCLUSIVELY.

5 Red Trading Stamps for 1

On all Tea and Coffee purchases.

Strawberries, choice, per case of 24 boxes	\$2.25
Per box	10c
Pineapples, fancy Florida, each	15c
Blood Oranges, per dozen, 30c, 30c, 25c	15c
Navel Oranges, 25c size, per dozen	15c
30c size, per dozen	25c
35c size, per dozen	25c
40c size, per dozen	30c
50c size, per dozen	35c
Per box (any size)	\$2.50
Good Apples, per barrel	\$1.00
Per bushel	50c
Per peck	15c
Baldwin Apples, per barrel, \$2.00 to \$1.75	
Greening Apples, per barrel, \$1.75 to \$1.50	
Ben Davis Apples, per barrel, \$1.50	
Seek-No-Further, per barrel, \$2.25	
Malaga Grapes, Florida Grape Fruit, California Grape Fruit	\$2.00
Special attention to out-of-town fruit orders.	
Onions per bunch	1c
Lettuce, per head	2c
Large bunches of Round Radishes	4c
Dry Onions, per bushel	25c
Fresh Green Asparagus, per bushel	10c
Potatoes—Per bushel	25c
Peaches—Three lbs evaporated California	25c
Jelly (Assorted)	25c
Fresh delicious "Muenster Case" (Cheese)	25c
Finest Emmentaler Swiss Cheese, per lb	25c
Cottage Cheese, per lb	15c
Very fancy delicious Smoked Whitefish, per lb	15c
Bismarck Herring, per can	25c
Caviar, per can	20c
Imported Sardines, per lb	10c
Butter, fresh roll and print, per lb	15c
Spiced Herring, per can	85c
Round Shore Herring, per can	15c
50c size, per can	15c
Imported Sardines, per can	10c
Codfish, per lb	10c
Swift's Premium Ham, per lb	15c
Imported Swedish Cranberries, quart	15c

THE ANDREW SCHOCH GROCERY CO.
THE BIG STORE.
BROADWAY & SEVENTH, ST. PAUL.

COUNTY NEEDS CASH TO PAY BONDS NOW DUE

County Commissioners Hold Star Chamber Session to Consider How to Raise It—Appropriation for World's Fair Junket Which Is Not in the Records.

Behind locked doors and with curtains closely drawn, the county commissioners in a star chamber session yesterday afternoon discussed plans for providing for the payment of \$22,000 in bonds which fell due April 1, but for

care for is by issuing new bonds, nothing definite was decided at the secret meeting yesterday, an adjournment being taken until April 16, the day following that on which the bids for the county's \$120,000 of certificates of indebtedness will be opened. Action is said to have been deferred until after these bids have been opened for the reason that the commissioners are anxious to know what kind of offers will be made for these certificates. Should the certificates of indebtedness be disposed of without any trouble a new issue of bonds to care for the \$22,000 now due, and being carried for the county by the St. Paul National bank, will be issued. The proposed new issue will be short-time bonds.

Behind Locked Doors.

The star chamber session was attended by Commissioners Gray, Seng, Wright and Powers, by Gray acting as chairman, County Auditor Krahmer was also present, as was Assistant County Attorney O'Neill. Newspaper reporters and all others were refused admittance, and while none of the officials who were on the inside were willing to admit any reason why the meeting was held behind locked doors, all declared that there had been "nothing of any importance" discussed. "There was nothing done that the

Favorites Force the Fighting

Country Contestants Gradually Coming to the Front.

Fitzgerald still leads, with Miss Anetta Trump, the Northwestern Telephone company's representative, a close second. Miss Curtis takes third place, with the popular teacher from the Lincoln school in fifth.

If today was June 6, instead of April 9, what a lot of speculation there would be! Visions of surf bathing, colonial battlefields in New England, a day in Golden Gate park or Niagara, and perhaps a Lookout Mountain, would be selected. It certainly is a great race, and why shouldn't it be? It is not often one gets a trip to the remotest corner of the United States without costing a cent, and only one of the successful contestants, but six, will have this same privilege. Think of the palace sleeping and dining cars, beautiful scenery en route and a week at point of destination! The luxuries of traveling cannot be surpassed, and we do not wonder at the following long list of contestants:

The Following is the Standing of the Contestants up to 2:00 p. m. Yesterday

Edward Fitzgerald, 664 Ravine Street, St. Paul.
Miss Anetta Trump, Northwestern Telephone Company, St. Paul.
Miss Lillian U. Curtis, Schunemann & Evans, St. Paul.
Miss Viva McMillan, Union Depot, St. Paul.
Miss Nellie Cook, Teacher Lincoln School, St. Paul.
Miss Josephine A. Parnell, West Publishing Company, St. Paul.
Miss Maud McMillan, Lake City, Minn.
Oscar Dahby, Moorhead, Minn.
Miss Rose Early, New Richmond, Wis.
Myron Hager, 200 Sherburne Avenue, St. Paul.
Miss Anna B. Reclam, Belgrade, Minn.
Mrs. J. H. Singleton, 14 Tilton Street, St. Paul.
Miss Jennie Danby, St. Peter, Minn.
Miss Etta Buisson, Wabasha, Minn.
Miss Vernie Funk, Warner & Andrews, St. Paul.
Miss Susan Shearer, Pine City, Minn.
Miss Kathryn Steffen, Hastings, Minn.
Miss Ann Sawyer, 1905 Milwaukee Avenue, St. Paul.
Miss Marguerite E. Clemens, Schunemann & Evans, St. Paul.
Miss Mary Sweeney, Portland Block, St. Paul.
Miss Julia Brandt, Mannheim Bros., St. Paul.
Miss Mary Lawler, 633 Capitol Boulevard, St. Paul.
Thomas North, Metropolitan Theater, St. Paul.
Miss Kate Flaherty, 423 York Street, St. Paul.
Miss Edith Elliott, Teacher Whittier School, St. Paul.
Charles Madison, Shell Lake, Wis.
Mrs. J. H. Krebs, 187 Grove Street, St. Paul.
Dennis Brundritt, Great Northern General Offices, St. Paul.
Mrs. C. Fellows, 313 Rice Street, St. Paul.
Miss Lyle La Pine, 400 Jackson Street, St. Paul.
William Lindberg, Foley Bros. & Kelly, St. Paul.
D. Paul Rader, Lake City, Minn.
Miss Bessie Emanuel, 60 Tilton Street, St. Paul.
Miss Annie Thordahl, Markata, Minn.
Godfrey John, 1025 Front Street, St. Paul.
Miss Grace O'Brien, The Emporium, St. Paul.
Miss Mabel McBride, Western Union Telegraph Company, St. Paul.
John C. Behr, 681 Charles Street, St. Paul.
Miss Gussie Steinhardt, Northern Pacific General Offices, St. Paul.
Miss Flora Hillen, Red Wing, Minn.
Miss Ethel C. Lilley, Elgin Flats, St. Paul.
Miss Ethel Evans, Northern Pacific General Offices, St. Paul.
Miss Annie M. McLaughlin, L. L. May & Co., St. Paul.
Paul Russell Stone, 73 Mackubin Street, St. Paul.
Miss Ella Boe, Stillwater, Minn.
Miss Dora Starkel, Stillwater, Minn.
Miss Elsie Holmes, Brownston, Minn.
Sylvester Bell, Owatonna, Minn.
W. A. Gerber, 363 Selby Avenue, St. Paul.
James Boyd, Browning, Minn.
Miss Mabel Ashley, Fairbairn, Minn.
Miss Linnie Converse, C. B. & Q. Freight Office, St. Paul.
Pyron F. Crandall, Ryan Transfer Company, St. Paul.
Miss Jennie S. Paulson, Field, St. Paul.
Glen Rodgers, Northern Pacific General Offices, St. Paul.
Miss Annie McKillip, Price, Robbins & Newton, St. Paul.
Walker Kinsman, Northern Pacific General Offices, St. Paul.
Miss Edna M. Larson, Northern Pacific General Offices, St. Paul.
Lester G. Shackelford, East Seventh Street, St. Paul.
Miss Marie E. Roney, Hagard & Wakefield, St. Paul.
Miss Carrie Kohn, Stillwater, Minn.
Miss Minnie L. Peck, Palace Clothing Company, St. Paul.
Harry Wagner, Northern Pacific General Offices, St. Paul.
Miss Jessie E. Kernan, Silver Star Candy Company, St. Paul.
Miss Agnes C. Neely, Fitch, Young & Co., St. Paul.
Miss Agnes McKenzie, Mannheim Bros., St. Paul.
Miss Emma C. Martin, Mannheim Bros., St. Paul.
Miss Rosa Conlin, Fairbairn, Minn.
James Kahoe, Omaha General Offices, St. Paul.
Suzanne Richeson, 839 Dayton Avenue, St. Paul.
Miss Ada Morris, Fairbairn, Minn.
Lewis D. Mann, Minnesota Mutual Insurance Company, St. Paul.
Miss Sadie Cashman, Owatonna, Minn.
George C. Rugg, 351 Summit Avenue, St. Paul.
Thomas M. Brennan, The Albion, St. Paul.
Mrs. J. H. Mealy, Reynolds, N. D.
Miss Greta Hanson, Fairbairn, Minn.
Miss Josie Schatter, Buffalo, Minn.
Edward G. Nelson, West Publishing Company, St. Paul.
Miss Ethel Farmer, Owatonna, Minn.
Miss Orpha Olin, Northern Pacific General Offices, St. Paul.
George Mann, 310 Cedar Street, St. Paul.

\$1.00 ON SUBSCRIPTION 100 VOTES.
\$2.00 ON SUBSCRIPTION 200 VOTES.
\$3.00 ON SUBSCRIPTION 400 VOTES.
\$4.00 ON SUBSCRIPTION 500 VOTES.
\$5.00 ON SUBSCRIPTION 700 VOTES.

Voters will oblige by sending in coupons flat, NOT ROLLED OR FOLDED.

SECURES DIVORCE FROM FICKLE WIFE

Hugh L. Nalty Is Granted a Decree by the District Court.

Hugh L. Nalty, who for many years has been a clerk in the store of A. H. Arnold, on East Seventh street, yesterday granted a divorce from Carrie L. Nalty, whom he ran away with and had nine years ago, when the girl was but fifteen years old.

Nalty and his wife lived together until 1895, when her conduct became such that he could no longer remain with her. When Nalty charged her with keeping company with other men, she admitted that she had often been out with Jack Scott, who is now serving a term in the penitentiary at Stillwater. After the plaintiff refused to live with her, Mrs. Nalty was sent by her father to live at the House of the Good Shepherd, but she again took up with Scott.

The plaintiff alleges that the sidewalk at the point where she was injured, De Soto street, between Cass and York, was rotten and improperly supported. She says that while she was walking over it, last October, she fell and sustained permanent injuries.

LIFE'S JOURNEY

IS BURDENSOME TO MANY IN ST. PAUL

Life's Journey is a heavy burden with a constantly aching back, with urinary disorders, diabetes, with any kidney ill—Doan's Kidney Pills relieve and cure—Here is St. Paul proof that this is so.

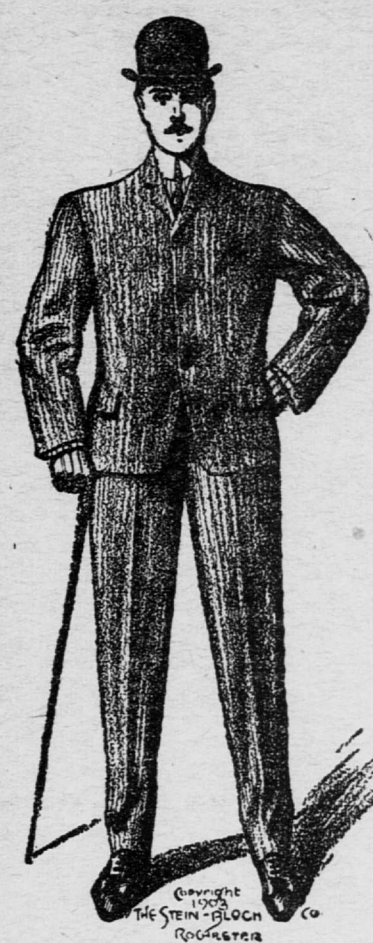
Mrs. John Durham, No. 479 East Seventh street, employed at Beulke Bros. meat market, says: "For four or six weeks I was bothered with backache, which pained me when stooping or rising from a sitting position. I saw Doan's Kidney Pills advertised as a positive cure, and deciding to give them a trial, I got a box at F. M. Parker's drug store. They gave me almost immediate relief, and since taking them I have had no return of the trouble. The treatment also regulated the action of the kidney secretions, rendering them normal. I can recommend Doan's Kidney Pills as a preparation which can be depended upon to cure kidney trouble."

For sale by all dealers. Price, 50c. Foster-McMillan Co., Buffalo, N. Y., sole agents for the United States. Remember the name, Doan's, and take no substitute.

C. B. BOWLBY PRESIDENT.

Sole Agents for Johnston & Murphy Shoes.

H. W. FAGLEY VICE PRES. AND TREAS.



The Great Home Store

Custom Tailored Suits and Overcoats

Ready-to-Put-On

Handsome fabrics Finest workmanship Correct styles

The Best \$10.00 Suit in Town
The Best \$15.00 Suit in Town
The Best \$10.00 Overcoat in Town
The Best \$15.00 Overcoat in Town

Stein-Bloch and Rogers-Peet Suits and Overcoats up to \$35.00.

NEW EFFECTS IN SPRING FURNISHINGS.

The Boston St. Paul.

Sixth and Robert Streets

Shortest Line to St. Louis

The exact difference, in the Rock Island's favor, between St. Paul and St. Louis is 22 miles.

There are other advantages. Time is fast; track is good; cars are modern; you don't change cars; the scenery is interesting—for 200 miles and more you ride alongside the Mississippi banks.

St. Louis Express leaves Minneapolis (Milwaukee depot) 6:30 p. m. St. Paul (Union Depot) 7:05 p. m. Arrives St. Louis 2:10 p. m. next day. Through sleeping and chair cars.

Minneapolis Ticket Office 322 Nicollet Ave. St. Paul Ticket Office 5th and Robert Sts.



Tickets on sale April 11-13. Good to return April 19th (or April 30th) by payment of 50 cents extra. For further information apply to J. N. Scott, Ticket Agent, Cor. 5th & Robert Sts., St. Paul.

To New Orleans and Return \$34.00 via the M. & St. L. and Illinois Central R. R., the shortest route, the newest and best trains and the time is only 38 hours. Try the North Star Limited via either Chicago or St. Louis. Tickets on sale April 11, 12, 13, good for return until April 30. For further information call at 398 Robert street, St. Paul, Minn.

To New York or Philadelphia Via the Lehigh Valley Railroad. Double track, stone ballasted. Magnificent trains. Dining cars a la carte. Stop-over allowed at Niagara Falls.

REAL ESTATE TRANSFERS.

T. Grutting and wife to Emil Willy, \$1,300.
O. L. Taylor and wife to A. Cook, 6,000.
A. D. Steven and wife to C. P. Potts, 3,700.
R. A. bile 4, Brown's First add. H. E. T. D. Myers to Mary A. Carroll, 1,500.
H. G. Kyle to Bertha Bowen, 1,300.
H. G. Kyle to Mackubin & Marshall's add. 3,000.
Mamie K. Sparks to M. H. Gregory, 1,600.
R. Lewis & Mabel's add. 1,300.
Marion C. Werthman and husband, 2,600.
Holcombe's add. 1,000.
St. Paul Trust Co. to J. Marzoff et al. 20,000.
E. L. Corning to Mary B. Filmer, 1,200.
C. T. Cardigan and wife to E. Johnson, 1,900.
Lucinda S. Brink to Gertrude H. Barker, 1,500.
Bank of Price, Simmons & Co. to Gertrude H. Barker, 1,500.
B. K. 2, Jefferson Park 1,500.
Total \$33,450.

VITAL STATISTICS.

Marriage Licenses.
John Erikson, Selma, Minn., to A. G. Peterson, Maria Greta Magnusson, Emil Willy, Sophia, Nieman, Henry Mensing, Clara Diers.
Deaths.
Bernadine Schweizer, 471 St. Anthony, 12c, April 6.
Ludwig Boer, 161 W. College, 63 yrs., April 6.
Wm. Henry, 770 N. Wabasha, April 7.
Mrs. Albertina Karow, city and county hospital, April 6.
John Henry Bryant, Los Angeles, Cal., 63 yrs., April 3.
Henry S. Newhart, Soldiers' Home, 71 yrs., April 6.



Physicians highly recommend it as a specific remedy in cases of MALARIAL FEVERS, COLDS, INFLUENZA, SLOW CONVALESCENCE. E. FOLGER & CO., 26-30 N. William St., N.Y.

DIED.

TWOHY—At Spokane, Wash., Sunday, April 5, Mrs. Lucy Twohy, widow of the late John Twohy, late of St. Paul. Funeral from union depot at 2:30 p. m. Thursday. Interment at Calvary.

COONEY—In St. Paul, Wednesday, April 8, at residence, 477 Superior street, Patrick Cooney, aged sixty-seven years. Funeral from residence Friday, April 10, at 8:30 a. m. Services at St. James' church at 9 o'clock. Acker Grand Army Post No. 21, take notice.

KLINGELTER—In Seattle, Wash., April 8, Ediza, beloved wife of George W. Klingelter, formerly of St. Paul.

AMUSEMENTS.

METROPOLITAN

Last Week of Grand Opera in English by the

Castle Square Opera Co.

Direction of Henry W. Savage.

TONIGHT And Saturday

AIDA

Friday Night and Saturday Matinee

TANNHAUSER

Prices Evenings and Saturday Matinee, 50c to \$1.50.

April 16—"York State Folks."

NEXT SUNDAY NIGHT

4 Nights and Wednesday Matinee

The Big Operatic Comedy,

THE CHAPERONS

Seats and Boxes Now On Sale.

GRAND JACOB LITT PROPRIETOR.

A STORY OF THE ROCKY MOUNTAINS

AT GRIPPLE CREEK

Matinee Saturday

Next Week—Al H. Wilson in "The Prince of Tatters"

STAR Matinee Daily

THEATRE Evenings at 8:15

EVERY ACT A FEATURE.

SHERIDAN'S CITY

SPORTS BIG SHOW

Ladies' Matinee Fridays.

Next Week—"KNICKERBOCKERS"

ARTISTIC PHOTOGRAPHS

All the latest

By