

INTERESTING EVENTS.

BRIGHT SAYINGS OF OUR EXCHANGES.

A Potpourri of Humor, Current Comment and Business Notices—Interesting State News.

Pneumonia and La Grippe.
Coughs cured quickly by Foley's Honey and Tar. Refuse substitutes. Sold by R. M. Wade & Co.

Ask your druggist for a calendar if you want fresh dates.

The prevention of consumption is entirely a question of commencing the proper treatment in time. Nothing is so well adapted to ward off fatal lung trouble as Foley's Honey and Tar. Sold by R. M. Wade & Co.

The Northern Pacific Railway Company is something of a temperance advocate. It will not allow its employees to drink while on or off duty.

Kidney and bladder trouble can always be prevented by the use of Foley's Kidney Cure. Sold by R. M. Wade & Co.

American typewriters, sewing machines and cash registers have paralyzed similar industries in Germany; and American shoes are rapidly doing the same.

Stop It.
A neglected cough or cold may lead to serious bronchial or lung trouble. Don't take chances when Foley's Honey and Tar affords perfect security from serious effects of a cold. Sold by R. M. Wade & Co.

Over 3,000,000,000 pennies have been shipped from the Philadelphia mint in the past five years. Placed side by side they would stretch 23,000 miles, or nearly around the earth.

A Life at Stake.
If you but knew the splendid merit of Foley's Honey and Tar you would never be without it. A dose or two will prevent an attack of pneumonia or la grippe. It may save your life. Sold by R. M. Wade & Co.

The farmer is the greatest multi-millionaire in this country. In ten years he has exported \$7,032,000,000 worth of stuff, and he is capable of much greater things than that. The farmer as a power in the land has no equal.

Children Poisoned.
Many children are poisoned and made nervous and weak, if not killed outright, by mothers giving them cough syrups containing opiates. Foley's Honey and Tar is a safe and certain remedy for cough, croup and lung trouble, and is the only prominent cough medicine that contains no opiates or other poisons. Sold by R. M. Wade & Co.

At a Thanksgiving dinner in Chicago given to 10,000 newboys by Mr. Isaac Woolf, the following is a portion of the menu: 130 turkeys, 75 hams, 10 barrels of mashed potatoes, 4 barrels of cranberry sauce, 1,500 gallons milk, 250 bunches bananas, 20,000 cakes, 1,800 pies.

The many friends of G. H. Hausan, engineer L. E. & W. R. R., at present living in Lima, O., will be pleased to know of his recovery from threatened kidney disease. He writes: "I was cured by using Foley's Kidney Cure, which I recommend to all, especially trainmen who are usually similarly afflicted." For sale by R. M. Wade & Co.

West Florida raises tobacco for a money crop. Middle Florida raises cotton; South Florida raises fruits and vegetables; each division separate and distinct, but it takes them all combined to make the great State that will some day be the most powerful in the Union.

Credit. Carlisle P. B. Martin, L. L. D., of Dallas, Texas, writes: "Of a morning when first arising, I often find a raw, sore collection of phlegm, which gives me a cough and is very hard to get rid of; but a small quantity of Baidott's Horehound Syrup will at once dislodge it and the trouble is over. I know medicine that is equal to it, and it is pleasant to take. I can most cordially recommend it to all persons needing medicine for throat or lung trouble." Sold by R. M. Wade & Co.

The balance of commercial and industrial power is slowly but surely drifting southward. The Railroad Age publishes statistics showing that over three-fifths of the total railroad mileage built in the United States during the year just closing was in the South and Southwest.

Cured Lumbago.
A. B. Camman, Chicago, writes March 4, 1903: "Having been troubled with lumbago at different times and tried one physician after another; then different ointments and liniments, gave it up altogether. So I tried once more, and got a bottle of Ballard's Snow Liniment, which gave me almost instant relief. I can cheerfully recommend it, and will add my name to your list of former sufferers." 25c, 50c and \$1 at Wade's Drug Store.

For Over Sixty Years.
Mrs. Winslow's Soothing Syrup has been used for over sixty years by millions of mothers for their children while teething, with perfect success. It soothes the child, softens the gums, allays all pain, cures wind colic, and is the best remedy for diarrhoea. It will relieve the poor little sufferer immediately. Sold by druggists in every part of the world. Twenty-five cents a bottle. Be sure to ask for "Mrs. Winslow's Soothing Syrup" and take no other.

Foley's Honey and Tar
for children, safe, sure. No opiates.

Imperfect Digestion
Means less nutrition and in consequence less vitality. When the liver fails to secrete bile, the blood becomes loaded with billious properties, the digestion becomes impaired and the bowels constipated. Herbine will rectify this; it gives tone to the stomach, liver and kidneys, strengthens the appetite, clears and improves the complexion, infuses new life and vigor to the whole system. 50 cents a bottle at Wade's Drug Store.

The average cost of labor in the production and preparation of coffee is 4.7 cents a pound.

There are 5,147 national banks with authorized capital stock aggregating 766 million dollars.

Pleasant and Most Effective.
T. J. Chambers, Ed. Vindicator, Liberty, Texas, writes December 25, 1902: "With pleasure and unsolicited by you, I bear testimony to the curative power of Ballard's Horehound Syrup. I have used it in my family and can cheerfully affirm it is the most effective and pleasant remedy for coughs and colds I have ever used. 25c, 50c and \$1 at Wade's Drug Store.

In London a million and a quarter persons live on five dollars or less a week for a family of five.

ADDITIONAL SLEEPING CAR SERVICE
Between Jacksonville and the West via Atlantic Coast Line.

The Atlantic Coast Line announces additional sleeping car service to the West via Dixie Flyer route. Effective December 15 and daily thereafter sleeper will leave Jacksonville at 8:05 p. m. for St. Louis via Tifton, Macon, Atlanta, Chattanooga, Nashville and Martin, arriving St. Louis 7:08 a. m. second morning.

This service will become effective south bound first car to arrive Jacksonville December 16.

A sleeping car line will be inaugurated between Jacksonville and Chicago, first car leaving Jacksonville 8:05 p. m. December 16 and daily thereafter running via Tifton, Macon, Atlanta, Chattanooga, Nashville and Evansville, arriving Chicago at 9:15 a. m. second morning. South bound, first car in this service will reach Jacksonville at 8:40 a. m. December 16.

These cars are in addition to the present line between Jacksonville and St. Louis via Montgomery, which leaves and arrives at the same time as the Dixie Flyer sleepers.

The Chicago and Florida Limited, Pullman vestibule train, will be inaugurated first train leaving Chicago January 4; first train leaving St. Augustine January 6, 1904. This gives excellent service between Florida and the West and the Northwest via Atlantic Coast Line and connections.

MAYOR'S PROCLAMATION.
To All Whom It May Concern.

Notice is hereby given that under and by virtue of the authority vested in me as Mayor of the Town of Punta Gorda, Florida, I hereby order an election to be held in said town on the 2nd day of February, 1904, for the purpose of electing one Town Councilman to fill the unexpired term of Magnus T. Swift, resigned.

Given under my hand and seal this 25th day of December, 1903.

J. H. CONCANNON, Mayor.

Attest: R. L. EARNEST, Clerk.

STOCKHOLDERS' MEETING.

The annual meeting of the stockholders of the Punta Gorda Bank will be held at its banking house in Punta Gorda, Fla., at 10 o'clock a. m. on the 12th day of January, A. D. 1904, for the purpose of electing officers and the transaction of such other business as may be legally and properly brought before said meeting.

M. V. WILLIAMS, Cashier.

Secure a Pretty Calendar.


The Atlantic Coast Line is distributing a very pretty wall calendar for 1904 including month of December, 1903. You can secure one of these calendars by sending 6 cents in postage to W. H. Leahy, Division Passenger Agent, Savannah, Ga.

Free Information.

For full, complete and reliable information as to rates, schedules, sleeping car service etc., to any point no matter where located, call on or address:

T. C. WHITE, D. P. A., Atlantic Coast Line, Tampa, Fla.

NO FARM IS COMPLETE WITHOUT A GROVE OF BUDDED PECAN TREES



They Are SAFE, SURE AND PROFITABLE

GRIFFING'S CATALOG
TELLS ABOUT THEM.

Twenty leading varieties of Pecans. Also a complete line of Fruit and Ornamental trees and shrubbery.

Catalogue free.

Address: THE GRIFFING BROS. CO., JACKSONVILLE, FLA.

GOING TO THE CIRCUS

By CASPAR DEAN

Copyright, 1903, by T. C. McChure

Aunt Sarah Bebee, after whose father Debee's Corners had been named, was a widow past fifty the day a poverty looking man drove up to her farmhouse in a fancy rig and wanted to arrange with her to cover the front of her barn with circus pictures.

"Why, bless your heart, I never went to a circus in all my life!" she exclaimed in reply.

"But you are not too old to begin," he suggested. "Let me put the pictures up, and I'll leave you ten tickets of admission. You can go and take all your friends."

"Land o' massy, but you don't know Debee's Corners. Everybody around here is a Methodist or Baptist or Presbyterian—everybody but me—and they won't even attend camp meeting if lemonade is to be sold on the grounds. I don't exactly know what my religion is, but if I went to a circus nobody would ever speak to me again."

The circus man wanted his bills on that barn, and he argued and reasoned for half an hour. He saw that Aunt Sarah was an independent character and that if he could get her started she'd be ready to defy public opinion. The result was that she finally said: "Well, go ahead with your pictures. I never saw an elephant or lion or tiger in my life, and I'll go and see the menagerie part anyhow. There'll be an awful row around here, and folks will think that Satan has got hold of me, but I'll have to stand it."

The pictures were hardly up when Deacon Danforth happened along the highway and saw them. He turned pale and trembled. Not in twenty years before had a barn on the Red Mill road been thus defiled. When he had recovered a little from the shock, he walked to the house and confronted the widow. For the first fifteen minutes the conversation was devoted to Satan, hades, Lot's wife, Judas Iscariot and other interesting subjects. But it gradually tapered off to hygienic food, southerners and alligators, and the deacon was almost smiling when he left the house.

Next day Deacon Bidwell saw those pictures as he sat in his buggy behind his old white horse. The horse saw them before he did and stopped so suddenly that the deacon was pitched against the dashboard. For a long minute the good old man thought his eyes deceived him, but the true state of affairs finally dawned upon him, and he groaned and sighed and drove up to the widow's gate.

"Widder Bebee, have you sold your livin' soul to Satan?" was his greeting, and then the fur flew. It was nearly an hour before he left the house, but he wasn't sighing and groaning as he went. On the contrary, he looked rather cheerful, and he called back from the gate:

"Yes; I s'pose there'll be camels there with two humps, mebbe with three, and they'll be walkin' at."

There was one more deacon in the neighborhood, Deacon Burton. He was driving to town to get a pitchfork mended and was humming the air of "I Want to Be an Angel" when the colored posters suddenly confronted him. There were short skirted, long legged demure poised on barbed hoops, or jumping through paper covered hoops. He stood and gazed and felt cold chills go up his back. He drove on to the farmhouse, half expecting to find the Widow Bebee trying to turn handspindles over a kitchen chair.

"I wouldn't 'a' believed it, widder—I wouldn't 'a' believed it!" he began as he entered the house. "It's the awfulest thing I ever heard of, and you know I've bin in Chicago twice and seen some awful things."

The widow had a reply ready. It began with hymns and worked up to elephants, taking in lions, tigers, grizzly bears and sea lions as it rose upward. She talked so earnestly and well that when Deacon Burton was ready to go he reluctantly admitted:

"No, I don't 'spose it's any more harm to look at a lion than to look at a woodchuck if you don't get mad and rip and swear over it."

There were others besides the deacons. There was old Mrs. Gaynor, for instance. She wasn't exactly a zealot, but she never took a dozen eggs to market without asking Heaven to bless them and make the price 14 cents a dozen. She wasn't a bigot, but she contended that her own brand of religion was the only one to be saved by. She wasn't narrow minded, but when she heard of those circus posters she went down to see Aunt Sarah and to say:

"I've just stepped in a mint to say that if you go to that circus I can't never let you enter my doors ag'in."

Aunt Sarah started in to argue, but old Mrs. Gaynor was on her guard against the wiles of Satan and wouldn't wait for further talk. The day of the circus arrived, and the widow drove into Medina to attend it. For some reason not to be explained a dozen farmers around her had business in town that day and made an early start—some of them before daylight. Some of them also lingered and drove home after dark.

It was all over the neighborhood that Aunt Sarah defied public opinion, and it was old Mrs. Gaynor who determined to bring her to book. She went about it in malevolence. She got up what she called a quilting bee and asked the three deacons and their wives and three or four others, and at a proper hour Aunt Sarah was sent for to be crushed. She arrived, and when asked if she had anything to say she very calmly replied:

"I didn't intend to see nuthin' but the animals, but when I got in there Satan beckoned me into the circus tent, and I went. The jokes of the clown tickled me almost to death. That's all I've got to say."

"Deacon Danforth, what do you think of such conduct?" asked Mrs. Gaynor as she folded her arms and rolled up her eyes.

"Nuthin', 'cept that I set jest behind Aunt Sarah and was tickled, too!" he replied.

"And you, Deacon Bidwell?"

"Well, the horses was wonderfully trained—wonderfully. I can't scarce-

ly make out how they do it." "And you, Deacon Burton? You ain't goin' to tell me you was there too?" "I got kind of tired lookin' at the two hump camels, and as one ticket admitted to all I went into the circus part," admitted the deacon. "And where did you all git tickets?" demanded the accuser as a sudden thought flashed across her mind. "Aunt Sarah gave us deadheads," answered the three deacons in chorus. "And left me out, when she knew I was jest dyin' to see the whole thing! Well, now, you can all go home without any supper, and if I ever speak to one of you ag'in I hope to fall dead on my own doorstep!"

PIÑAAPPLE SOILS

All Requisites Found at Punta Gorda and Vicinity.

In an exhaustive treatise, in Bulletin No. 68, the Florida Agricultural Station has issued a valuable paper on pineapple soils, which every one interested in the cultivation of that fruit should send for, addressing their request to Experiment Station, Lake City, Fla.

This bulletin is the work of Prof. H. K. Miller, and Prof. H. Harold Hume. On the subject of the "Requisites of a Good Pineapple Soil," it has the following:

The first essential feature to be considered in the selection of a soil for pineapple culture is the temperature to which the locality is likely to be subjected. In Florida the bulk of the pineapples must be grown south of latitude 28 degrees, as north of this, and indeed for thirty or forty miles south of this line, killing frosts are likely to occur any winter. The fruit is grown many miles north of 28 degrees, but closed sheds and artificial heat is necessary. This is so expensive that only fancy varieties can be profitably grown under such conditions. Latitude alone does not determine how low the thermometer may be expected to register, for we have what are termed cold streaks far south of localities where frost rarely ever occurs. Proximity to large bodies of water materially influences the temperature of a locality. The water, on account of its great capacity for absorbing heat, becomes warm during the day and at night when the temperature of the air drops the heat absorbed by the water is slowly given off and in turn moderates the temperature of the surrounding atmosphere. Another factor which has a decided influence is that of elevation above the surrounding country. Such a point well elevated above a considerable area is heated by the warm air which rises from the lower level. It is a well-known fact that warm air is lighter than cold air, and when frost occurs it is found decidedly heavier in low places. Cold air drops into these depressions and forces the warm air upward, so that the elevated points are not chilled so much as points on a lower plane. It will be understood that this applies only to moderate elevations, such as we may find in Southern Florida. It has been found that a system of clearing so as to facilitate a free circulation of air has greatly lessened the liability of frost in sections on the East coast. Many localities in that region which were at one time decidedly frosty, are rarely injured now by cold, and this is attributed to the large amount of clearing that has been done in the neighborhood. When the land is elevated along the river front, it is advisable to clear out the undergrowth at least between the river and fields so that free circulation of the air may be established.

In selecting a location one must, of course, take into consideration the facilities which exist for shipping. Most of the land on the East coast upon which pineapples can be successfully grown is near the railroad. The land lying out some distance from the road is, as a rule, too low and wet, or else is subject to frost. In the other pineapple sections of the State this is not necessarily the case, and the pineeries are located near the railroads, not of necessity, but in order that proper facilities may be had for shipping.

What has been said concerning the selection of a location for growing pineapples has not applied to the soil itself, but its surroundings. There are certain essential features which the soil itself must possess in order for it to produce the fruit. In the first place it may be said that the pineapple is an exhaustive plant and requires large supplies of the three most common fertilizing elements. Unfortunately we have little choice in the selection of soils from this standpoint, since none of our soils will, without fertilizing, produce pines for any length of time, except on the keys, and even here the fourth crop usually ends the life of the field.

Much carbonate of lime in the soil renders it unfit for pineapple culture and attempts to grow the fruit on our shell lands have not met with success. An acid soil is also to be avoided, since it is almost invariably the case that plants growing on such soil have a decided tendency to spike. It is true that pineapples will grow on widely differing types of soil so far as composition is concerned, but in all these cases, the physical character of the soil is approximately the same. It seems absolutely essential that the soil must be of such nature as to afford good drainage and complete absence of stagnant water around the roots. The root system of the plant is not extensive and its entire structure is such as to adapt it to dry districts and it cannot possibly thrive in Florida where we have such a heavy precipitation of rain, unless the water rapidly drains away.

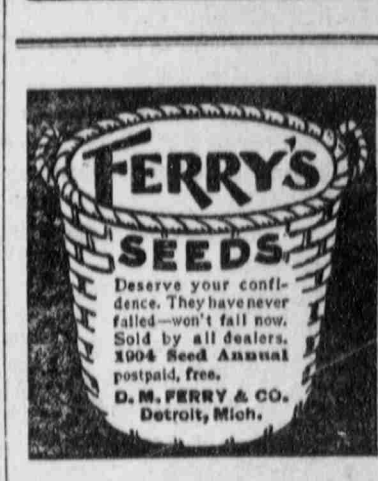
HEALTH

"I don't think we could keep house without Thedford's Black-Draught. We have used it in the family for over two years with the best of results. I have not had a doctor in the house for that length of time. It is a doctor in itself and always ready to make a person well and happy."—JAMES HALL, Jacksonville, Ill.

No DOCTOR

is necessary in the home where Thedford's Black-Draught is kept. Families living in the country, miles from any physician, have been kept in health for years with this medicine as their only doctor. Thedford's Black-Draught cures biliousness, dyspepsia, colds, chills and fever, bad blood, headaches, diarrhoea, constipation, colic and almost every other ailment because the stomach, bowels, liver and kidneys so nearly control the health.

THEDFORD'S BLACK-DRAUGHT



Holiday Exposures
Bring on Coughs, Colds, Grippe and other troubles that can only be promptly nipped in the bud by using

Tropical Pine-Apple Tar and Wine,

The Great Florida Remedy, backed by more than a million dollars of Florida capital. Look at the names of the gentlemen who compose this company and see if this is not a sufficient guarantee of merit.

Wm S. JORDAN, Pres., Banker and Capitalist.
CHAS. BLUM, Vice-Pres., Wholesale Merchant.
J. J. WILLIAMS, 2d Vice-President, Commercial Salesman.
B. W. SPERRY, Treasurer, Proprietor Duval Hotel.
THOS. A. DAVIS, Sec'y. and Mgr., Publisher.
D. H. McMILLAN, Vice-President, Consolidated Naval Stores Co.
W. C. YEISER, President, The Metro Company.
E. E. WEST, Capitalist and Lumber Manufacturer.
L. A. FRALEIGH, Cashier Bank of Madison.
T. C. SMITH, Assistant Cashier Bank of Madison.
A. H. WEST, Capitalist and Real Estate Dealer.
GEO. T. HODGSON, General Southern Agent New York Life Ins. Co.
D. P. SMITH, Tax Collector Volusia County.
J. H. McCREARY, Editor Gainesville Daily Sun.
D. E. CAMPBELL, General Manager St. Augustine Daily Record.
WM J. BRYAN, County Solicitor, Duval County.
M. A. EVANS.

Try a bottle and if not pleased, write the company or any one of the above gentlemen and get your money back. Made only by Trop. Mfg. Co., and sold by all Druggists.

WORMS! WHITE'S CREAM VERMIFUGE
For 20 Years has Led all Worm Remedies.
SOLD BY ALL DRUGGISTS.
JAMES F. BALLARD, St. Louis.
For Sale by the R. M. Wade Drug Co.

Atlantic Coast Line

Great Highway of Travel

Florida, East and West, North and South

Route of the celebrated trains, New York and Florida Special, Florida and West Indian Limited, Chicago and Florida Limited. Convenient schedules, Elegant Pullman service, Magnificent Dining cars.

CONVENIENT METHOD OF TRAVELING.
Atlantic Coast Line One Thousand Mile Tickets, good over fifteen thousand miles of railroad, embracing all portions of the South, on sale at all principal agencies, rate of \$25.00 each. Limited to one year from date of purchase.

For full, complete and reliable information regarding rates, schedules, Pullman service etc., call on or address:

T. C. White, Div. Pas. Agt., Tampa, Fla.,
W. J. Craig, Gen. Pas. Agt., Wilmington, N. C.,
H. M. Emerson, Traffic Mgr., Wilmington, N. C.

HERBINE.

Pure Juices from Natural Roots.
REGULATES the Liver, Stomach and Bowels,
Cleanses the System, Purifies the Blood,
CURES Malaria, Biliousness, Constipation,
Weak Stomach and Impaired Digestion.
Every Bottle Guaranteed to Give Satisfaction.
LARGE BOTTLE, 50 CENTS.
SMALL DOSE, 25 CENTS.
Prepared by JAMES F. BALLARD, St. Louis, Mo.
For Sale by the R. M. Wade Drug Co.

For Sale by the R. M. Wade Drug Co.

Patents
TRADE MARKS
COPYRIGHTS &c.
Anyone sending a sketch and description may quickly ascertain our opinion free whether an invention is probably patentable. Communications should be addressed to MUNN & CO., Patent Attorneys, 351 Broadway, New York.
Scientific American.
A hand-drawn sketch of an invention, with a description of its operation, is all that is needed to secure a patent. Mun & Co. will secure a patent for you, and will also defend your patent against all infringers. Write to MUNN & CO., Patent Attorneys, 351 Broadway, New York.

A. C. L. MILEAGE TICKETS
(\$25.00 PER 1000 MILES.)
Are Good Over the Following Lines:

Atlantic Coast Line,
Atlanta, Knoxville & Northern Ry
Atlanta & West Point R. R.
Baltimore Steam Packet Co. } Between
Chesapeake Steamship Co. } Norfolk
Charleston & Western Carolina Ry.
Columbia, Newberry and Laurens Ry.
Georgia Northern Ry.
Louisville & Nashville R. R.
(Except the following lines: L. M. C. W. R. R., Glasgow R. R., Elton & Guthrie R. R., Pontchartrain R. R., Between Evansville & St. Louis and Louisville & Cincinnati proper.)
Louisville, Henderson & St. Louis Ry.,
Nashville, Chattanooga & St. Louis Ry.,
Northwestern Ry. of South Carolina,
Independent Line Steamers, Port Tampa and St. Petersburg Steamboat Line, Punta Gorda and Ft. Myers Steamboat Line,
Richmond, Fredericksburg & Potomac Seaboard Air Line,
Western & Atlantic Ry.,
Washington Southern Ry.,
Western Ry. of Alabama.

A CONVENIENT METHOD OF TRAVELING.
W. J. CRAIG, Gen. Pass. Agent,
Wilmington, North Carolina.

CAN YOU SPEAK SPANISH? If not, you can easily learn by sending two cents in postage to W. J. Craig, G. P. A., Wilmington, N. C., or W. H. Leahy, D. P. A., Atlantic Coast Line, Savannah, and receive books entitled "What to say and how to say it." A very valuable pocket teacher.

Take Notice.
TO THE PUBLIC:—I have purchased a portable folding barber's chair and am now fully prepared to call at any person's residence or place of business and do all kinds of tonsorial work.—A. B. Coleman.—15-1d.

"Would you like to know how to speak Spanish? If so, send two cents in postage to W. H. Leahy, D. P. A., Atlantic Coast Line, Savannah, and receive books entitled "What to say and how to say it." A very valuable pocket teacher."

A CHOICE FORTY-ACRE tract of unimproved land on Lemon Bay near Grove City, finely adapted to pineapples, lemons, etc., splendid location for a home, on line of proposed railway extension to Boca Grande, only \$10 per acre. Address: THE HERALD, Punta Gorda.

FREE Knowing what it was to suffer, I will give FREE OF CHARGE, to any afflicted, a positive cure for Eczema, Salt Rheum, Erysipelas, Piles and skin diseases. Instant relief. Don't suffer longer. Write F. W. WILKINS, 100 West 4th St., New York.