

DAIRY AND CREAMERY

By Prof. A. B. Nystrom, Dairy Instructor State College, Pullman, Wash.
(For any information regarding this department, write the above.)

QUESTIONS AND ANSWERS

ONE OR TWO SILOS, WHICH?

Question: Have perused very carefully your "Silo" issue of April 1st, and would appreciate very much a little advice.

We are milking 17 cows, but will shortly increase our herd to 30. Am arranging for silage since I will have to feed it the year round, and would like to know whether you think it advisable to build one large or two smaller silos. C. H., Wapato, Wash.

Answer: For 30 cows you should have a silo about 16x40 feet. This will hold 180 tons, and will allow you to feed on the average about 33 pounds per day for every day in the year for each cow. I would advise that you build four or five feet of this silo in the ground. If the silage from one season is not all used up by the time the next crop is ready, there will be no harm in putting the green corn right on top of the old silage, and then continuing the feeding from

the new crop. You will find a large saving in construction by putting up one silo rather than two for this number of cows; and you will also save in the amount of silage that will spoil.

INFLUENCE OF FOUR MILKINGS A DAY UPON FAT IN MILK.

Question: I have my cows on good clover and rye grass pasture. Am feeding ground oats and oil meal as a grain ration. What would be the proper portions to mix these feeds?

Do four milkings per day have a tendency to increase the per cent of fat in the milk? Chas. MacD., Oak Harbor, Wash.

Answer: Your ration is very high in protein, and would be considered too narrow for any purposes except for making a record. High protein feeds have a tendency to make high testing milk as long as the cow can stand under it. At any rate I would suggest that you feed some hay such as clover or alfalfa, as much as the cow will consume, and add bran to the grain ration using less of the oil meal. I think a mixture of 400 pounds of ground or crushed oats, 200 pounds of bran, and 50 pounds of oil meal would be about right. Feed this grain mixture in the proportion of one pound of grain to every three pounds of milk produced.

Four milkings a day do not give a higher per cent of fat, but usually bring a heavier yield of milk, thereby increasing the total yield of butterfat.

POTATOES AND CARROTS; OATS VS. BRAN.

Question: Have potatoes any feeding value for cows? Also have carrots? Is chopped oats better than bran? F. F. L., Tekoa, Wash.

Answer: Potatoes may be used to take the place of succulence in feeding dairy cows, but only a small amount should be fed—10 to 20 pounds. Carrots are much better, and may be used in amounts as large as 50 to 60 pounds if the cow will consume them. Both chopped oats and bran have a place in a ration, and one is not expected to take the place of the other as a rule. If you will give me a statement of all the feeds you have or can secure with the prices, I would be glad to balance a ration for you.

INFORMATION ON FEEDING; COW SHED ON NORTH SIDE OF BARN.

Question: Please send me all available data concerning the feeding and care of dairy cows. Also tell me what you consider the best way of rearranging my barn in regards to sanitation and light. C. M., Poulsbo, Wash.

Answer: Such bulletins as we have pertaining to dairying have been sent to you under separate cover and also a list of available bulletins.

I am preparing a series of articles on the feeding of dairy cows, the first of which appeared in the May 1st issue of this paper. I also discuss from time to time different feeding problems applying especially to the Pacific Northwest in this paper.

It is to be regretted that your cow



About the most practical piece of machinery on our farms is the

SHARPLES MILKER

THIS voluntary endorsement is made by the secretary of a most progressive dairy farm, whose name we will be pleased to furnish on request. He says further:

"Before getting the SHARPLES MILKER we were milking 100 to 110 cows. It took ten hand-milkers four hours a day—two in the morning and two at night. We are now milking approximately 135 cows with the eight units. We use two men to operate the machine and two to do the stripping. It takes these four men just about the same time to milk these 135 cows as it took our ten men to milk 100 by hand."

THE SHARPLES TUBULAR CREAM SEPARATOR is a product that for thirty-three years has built character into dairy farming. For dairymen who desire to keep abreast of progress.

Write for Catalogs

The Sharples Separator Co.
West Chester, Pa.

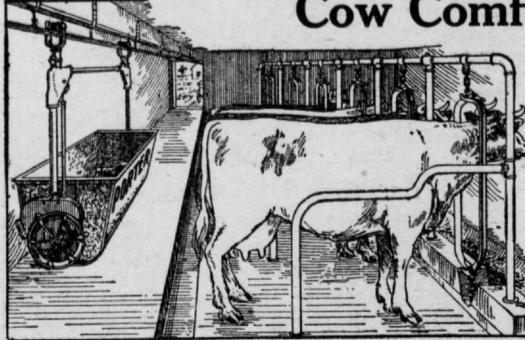
Chicago Kansas City San Francisco
Minneapolis Omaha Portland, Ore.
Dallas Toronto Winnipeg
Agencies Everywhere

Fills Your Silo Quickly With Less Power and Labor
You can operate this machine with a 4 h. p. gasoline engine. It's the highest running blower type of ensilage cutter made—The *throwing, blowing, lifting force* carries the ensilage in a steady full stream rapidly up into the highest silo without waste of power. The ensilage packs perfectly and keeps sweet and succulent. The
PAPEC ENSILAGE CUTTER
is easy to set up and take down. Simple in construction, not easy to get out of order. The entire frame is one solid piece of semi-steel. The bearings are always in line, run smoothly and will not heat. The feeding mechanism is geared to the main shaft—always gives you the desired length of cut. The *Papec Ensilage Cutter* is not chain driven, but has heavy gears which transmit all the power. It cuts ensilage perfectly and swiftly—as fast as you can bring the corn to the machine.
Write for Illustrated Catalog. Send today for this book. It shows how The "Wonderful Papec" cuts ensilage with less power, time and labor. 25 convenient distributing points in the U. S.



PAPEC MACHINE COMPANY
Box 18 Shortsville, New York

A Clean Barn, Less Labor Cow Comfort, More Milk



are assured by installing Porter Dairy Barn Equipment. Pays for itself in added profits in a year, in satisfaction every month. Benefit by the skill and experience represented in the name of

PORTER

Pioneer in
Sanitary Barn Equipment
Porter Steel Stalls give perfect ventilation and better light; are sanitary; keep the cows healthy, comfortable and contented which increases the yield of milk.

The Porter Litter Carrier runs on Columbian Steel Track; wheels are roller-bearing, swivelled to run easily around the sharpest curves; carries heavy loads; sustained an any height; tips at operator's will; saves work.

Porter Steel Stanchions allow cows unusual freedom, but keep them in perfect line. Porter Hay Tools, Barn Door Hangers, etc., are unequalled. Tell us size and arrangement of your barn and we will submit free plans that will save you time and expense. This puts you under no obligations.

J. E. PORTER COMPANY, OTTAWA, ILL.

PILLING CATTLE INSTRUMENTS

Pilling's Hard Milker Outfit contains: Bistoury, \$1.50; Teat Opener, 75c.; Teat Expander, 50c.; Milk Tube, 50c., and Teat Soap, 50c. Complete in case, with "Easy to Use" directions, sent prepaid on receipt of \$3.00.



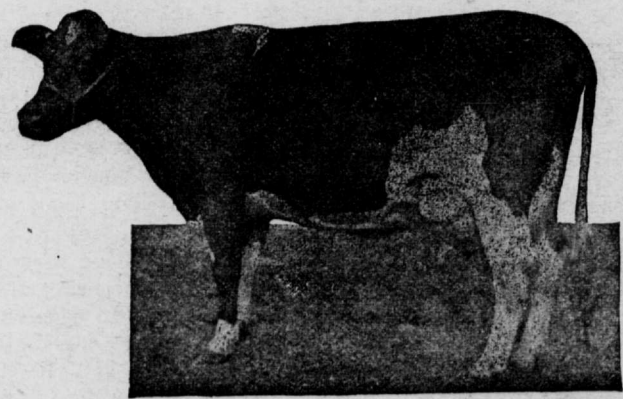
Pilling's Cattle Case No. 2 contains \$3 Milk Fever Outfit and 8 other cattle instruments needed by every dairyman, complete in case, for \$10; regular value, \$15. Sent prepaid, with full "Easy to Use" directions, on receipt of \$10. Order today.



Send for Booklet, "Air Treatment for Milk Fever."
G. P. PILLING & SON CO.
2310 Arch St., Philadelphia, Pa.

PURE BRED REGISTERED Holstein-Friesian Cattle

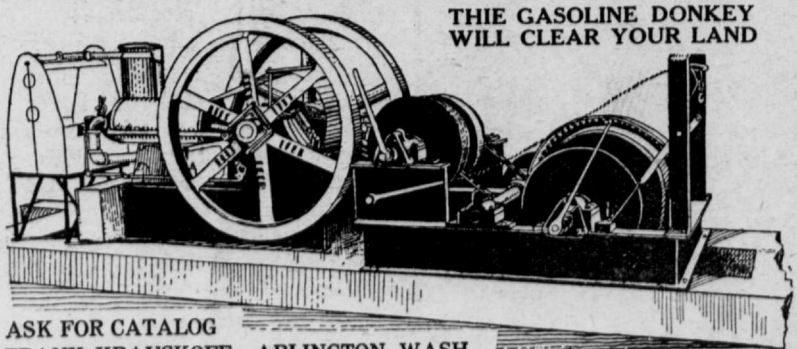
Bred for Type and Milk Production.
Every animal is guaranteed to be absolutely as represented.



La Conner Flats Stock Farm

J. H. HULBERT, Jr.

Mount Vernon, Wash.



THIE GASOLINE DONKEY
WILL CLEAR YOUR LAND

ASK FOR CATALOG
FRANK KRAUSKOFF, ARLINGTON, WASH.