

# For Your Regular Dinner

We Will Have Everything that the Market Affords  
GREEN GOODS, FRESH FRUITS, NUTS, CANNIES AND VEGETABLES. CALL US UP EARLY. FREE AND PROMPT DELIVERY TO ALL PARTS OF CITY.

## H. J. Raymond & Co.

Open Evenings Until 10 o'Clock Phone 28



IS YOUR WARDROBE COMPLETE?  
Are you stocked up on shirts, socks, ties, collars, etc? If there is any article you need come to us for it. We have a brand new stock of the latest fashions and styles. At the prices we are asking this is your opportunity to complete your requirements.

MULLEN & HEBERT

"THE HUB"

Rates Reasonable Third and Harris Street, Juneau

## The BERGMANN

Newly built and newly furnished, modern in all respects, steam heated, electric lighted, hot and cold water in every room; bath on every floor, including a shower bath. Sanitary conditions perfect. Dining Room in connection.

## ALASKAN HOTEL

Why not make the Alaskan Hotel your winter home?  
A. T. SPATZ, Manager.

# MONEY TALKS

in every phase of life. It has a big voice in the affairs of men. Opportunities come to those that have it that are never offered to those without it.

John D. Rockefeller started business with \$1,000 and has made tens of millions of dollars. The great opportunity knocks but once at every man's door. Are you ready to seize your opportunity if it comes today? Have you a \$1,000 that you can use?

START SAVING—BE READY COMMENCE TODAY

## First National Bank

### TODAY, TOMORROW

The present shapes the future. What you do today concerns the things of tomorrow. If you are at all anxious about your financial future, you should quickly seize the opportunity to save money.

An account with this bank affords an easy way to save money.

## The FIRST TERRITORIAL BANK OF ALASKA

26 FRONT STREET

The Empire has THOUSANDS OF READERS.

## EXPORTS FROM ALASKA FOR ONE MONTH LARGE

Nearly Six and One-half Million Dollars Was Value of Exports for December. MONTH WAS SLACK ONE Steamers Were Laid Up and Navigation to Seward Peninsula Came to Close.

The exports from Alaska show a falling off in value for the month of December, according to the monthly statement just issued today by the local customs officials, but this is not surprising considering that the home season is closed and over half of the boats have been laid off the Southeastern and Southwestern Alaska runs.

The exports for the past month reached a total valuation of \$6,411,566, which is \$2,908,710 less than the export values of the month of November.

The detailed report as issued, shows:

|   |             |
|---|-------------|
| Animals   | 10          |
| Bones, horns, hoofs   | 190         |
| Copper  | 4,096,693   |
| Curios  | 1,623       |
| Fertilizer  | 700         |
| Kippered Herring  | 40,719      |
| Fresh fish, other than salmon                                     | 88,268      |
| Dried, smoked and cured fish                                      | 150         |
| Pickled   | 11,341      |
| Canned salmon   | 717,582     |
| All other salmon  | 46,516      |
| Shell Fish  | 674         |
| Other fish and fish products                                      | 4,063       |
| Furs and skins  | 17,675      |
| Gypsum  | 7,200       |
| Ivory   | 2,198       |
| Jewelry   | 378         |
| Lead ore  | 10,306      |
| Oils, animals, fish   | 1,070       |
| Stone, including marble   | 56,195      |
| Whale bone  | 6,036       |
| All other articles  | 6,223       |
| Total   | \$5,115,954 |
| United States articles returned                                   | \$150,503   |
| Total exports, exclusive of gold bullion, gold ore and silver ore | \$5,266,357 |
| Gold bullion  | 788,192     |
| Gold ore  | 280,192     |
| Silver ore  | 76,113      |
| Gold coin   | 425         |
| Grand total   | \$6,411,566 |

Exports from Alaska for the month of December, according to the monthly statement just issued today by the local customs officials, but this is not surprising considering that the home season is closed and over half of the boats have been laid off the Southeastern and Southwestern Alaska runs.

## "EMPIRE" BOYS TO BE GUEST AT THE ORPHEUM TONIGHT

Mrs. John T. Spickett, god mother to all the "kids," has again lived up to her reputation and last night extended an invitation to every carrier and sales boy of The Empire to attend the show at the Orpheum tonight as her guest. The invitation was extended last night and needless to say every one of them will be on deck. The boys will meet at The Empire office and will go from there to the theatre in a body under the leadership of Circulation Manager Burford, whose duty it will be to herd them along and see that none of the stragglers get left and that the curfew officers permit the boys to get home although it might be after the stipulated hour for being abroad.

EMPIRE "ads" pay.



NEW YEARS COMES BUT ONCE A YEAR

make your New Year goody sips with cream from a responsible house. Use plenty of Juneau Dairy milk with it; you may not be wealthy but you will be healthy and wise. It saves many a stomach trouble in older folks. Why not have the best milk as well as the most economical. Mother can we have whip cream cake for New Years? Sure.

JUNEAU DAIRY

## ELKS TO CLOSE THE OLD YEAR BY GIVING HOP

Tomorrow night the main social feature of the New Year's starter for the annual celebration will be the affair given by the Elks. This function is called Snow Man and Snow Ball Dance and the committee has been working hard on securing new forms of amusement to go with the dancing. There will be a snow battle, confetti, and serpentine throwing. The entire evening will be practically and goodbye to the old year of 1916 and a most glorious welcome to the young 1917.

## ATTORNEY'S MOTHER FORCED TO UNDERGO OPERATION

Mrs. Robertson, mother of Ralph E. Robertson, was forced to undergo an operation for appendicitis at St. Ann hospital yesterday. The operation was performed by Doctor L. O. Sloane and Dr. P. J. Mahone and was successful as the patient is resting easily.

TWO IN ONE—The EMPIRE'S "ads" keeps the housewife informed of all sales and the news columns are right up to the minute on the day's news.

Sunshine Biscuits can be had at Goldstein's Emporium. 49-14.

## NOTICE OF APPLICATION FOR PATENT

No. 03484

UNITED STATES LAND OFFICE, Juneau, Alaska, December 22, 1916.

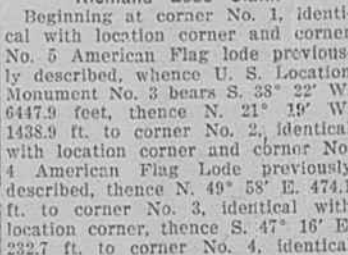
NOTICE IS HEREBY GIVEN that T. C. Hallum, whose post-office address is Juneau, Alaska, in behalf of himself and his co-owners, P. E. Hallum and A. O. Vopen, has filed an application for patent for the lode mining claims and millsites known and designated as the Hallum Group and also known and designated as the Norman Taku Group, situated on Mount Juneau and on the southerly slope thereof, on the northwesterly side of Gold Creek and approximately one (1) mile north from the Post Office at Juneau, Alaska, in the Harris Mining District, Juneau Recording Precinct, Territory of Alaska, and described by the field notes and official plat on file in this office as Mineral Survey No. 1048 A & B. Said group of claims consists of the following lode mining claims and millsites: Jack Pine, Ground Hog, Rambler, Maple, American Flag, Hemlock, Richland, Lakema, (also known as Lackema), Armitilla, (also known as Armitilla, Armitilla, Monitor, Queen, Umattilla, Omega, Lackema Fraction, and Monitor Fraction) lode claims and Hile No. 2 and Hile No. 3 Millsites.

Said claims by the said survey are located in the United States Location Monument No. 3, which is situated in latitude 58° 18' north and longitude 134° 25' 30" west, and consists of a wooden post in a mound of stones situated on the east shore of Gastineau Channel, just above the road to the cemeteries and approximately one-half mile northwesterly of the Post Office at Juneau, Alaska.

## "EMPIRE" BOYS TO BE GUEST AT THE ORPHEUM TONIGHT

Mrs. John T. Spickett, god mother to all the "kids," has again lived up to her reputation and last night extended an invitation to every carrier and sales boy of The Empire to attend the show at the Orpheum tonight as her guest. The invitation was extended last night and needless to say every one of them will be on deck. The boys will meet at The Empire office and will go from there to the theatre in a body under the leadership of Circulation Manager Burford, whose duty it will be to herd them along and see that none of the stragglers get left and that the curfew officers permit the boys to get home although it might be after the stipulated hour for being abroad.

EMPIRE "ads" pay.



NEW YEARS COMES BUT ONCE A YEAR

make your New Year goody sips with cream from a responsible house. Use plenty of Juneau Dairy milk with it; you may not be wealthy but you will be healthy and wise. It saves many a stomach trouble in older folks. Why not have the best milk as well as the most economical. Mother can we have whip cream cake for New Years? Sure.

JUNEAU DAIRY

# Now for a Complete Riddance of All Ready-to-Wear Garments

As has always been our custom we inaugurate this clean-up sale before taking inventory, and rather than carry the garments over until next season, have made a cut on all suits, coats, skirts and dresses, and while the stocks are limited, it still affords a fairly good selection. CHILDREN'S COATS AT ONE-THIRD LESS.

## GOOD HEAVY BED COVERING FOR COLD NIGHTS

A big assortment of fancy plaids, pink and blue borders, and solid gray, in the regular size. We were fortunate in having a lot of these carried over from last year and still remain at the old price which is at least a saving of Twenty-five Per Cent.

## SILKS FOR ALL-THE-YEAR-ROUND WEAR

Neat plaids suitable for waisting in the dark colors, yard wide fancy silks, in taffeta, mostly checks and plaids, crepe de chine in light evening shades, black silks in satin, taffeta, crepe de chine and Duchess.

## CASHMERE HOSE FOR LADIES AND CHILDREN

Infants' sizes, children's sizes and Misses' cashmere hose at 35c pair, together with a medium weight hose for ladies at 35c, 50c, 75c and \$1.00. Try our infants' silk and wool hose in black, white and light blue at 50c the pair.

## COTTEN OR WOOLEN BATH ROBES--\$3.50 to \$20.00

Every woman needs one of these garments for 'round the house wear these cold mornings. Come in a big range of patterns, blues, pinks, lavender and grey; some satin trimmed, others plain, also all wool Pendleton robes.

# B. M. Behrends Co., Inc.

Maple Lode Claim  
Beginning at corner No. 1, identical with location corner and corner No. 1, American Flag Lode, and corner No. 4, Armitilla Lode, previously described, thence S. 50° 19' E. 1124.9 ft. to corner No. 4, identical with location corner, thence S. 70° 59' W. 600 ft. to corner No. 1, the place of beginning, containing an area of 13,239 acres. Magnetic variation 33° 10' E.

Jack Pine Lode Claim  
Beginning at corner No. 1, identical with location corner and corner No. 1, Richland Lode and corner No. 5, American Flag Lode and corner No. 4, Armitilla Lode, previously described, thence U. S. Location Monument No. 3 bears S. 38° 22' W. 6447.9 ft., thence N. 49° 58' E. 581.6 ft. to corner No. 2, identical with location corner and corner No. 5, Richland Lode previously described, thence S. 50° 19' E. 1124.9 ft. to corner No. 3, identical with location corner, thence S. 49° 58' E. 594.6 ft. to corner No. 4, identical with location corner and corner No. 1, identical with location corner, thence S. 50° 19' E. 1124.9 ft. to corner No. 1, the place of beginning, containing an area of 15,108 acres. Magnetic variation 33° 10' E.

Queen Lode Claim  
Beginning at corner No. 1, identical with location corner and corner No. 1, Umattilla Lode and corner No. 4, Umattilla Lode previously described, thence U. S. Location Monument No. 3 bears S. 48° 08' W. 5925.3 ft., thence N. 49° 58' E. 594.6 ft. to corner No. 2, identical with location corner and corner No. 3, Maple Lode and corner No. 4, Jack Pine Lode and corner No. 1, Ground Hog Lode previously described, thence S. 61° 43' E. 1289.4 ft. to corner No. 3, identical with location corner and corner No. 4, Ground Hog Lode previously described, thence S. 49° 58' W. 259.2 ft. to corner No. 4, identical with location corner, thence N. 74° 09' W. 1447.3 ft. to corner No. 1, the place of beginning, containing an area of 11,743 acres. Magnetic variation 32° 10' E.

Lakema Lode Claim  
Beginning at corner No. 1, identical with location corner and corner No. 4, Queen Lode previously described, thence U. S. Location Monument No. 3 bears S. 58° 29' W. 6809.3 ft., thence N. 49° 58' E. 1277.8 ft. to corner No. 2, identical with location corner and corner No. 5, Hemlock Lode and corner No. 5, Omega Lode previously described, thence S. 65° 52' E. 294.0 ft. to corner No. 3, identical with location corner and corner No. 4, Omega Lode previously described, thence S. 49° 58' W. 1277.8 ft. to corner No. 4, identical with location corner, thence N. 65° 52' W. 294.0 ft. to corner No. 1, the place of beginning, containing an area of 7,762 acres in area. Magnetic variation 32° 10' E.

Lackema Fraction Lode Claim  
Beginning at corner No. 1, identical with location corner, thence U. S. Location Monument No. 3 bears S. 61° 33' W. 6780.3 ft., thence N. 25° 28' W. 364.0 ft. to corner No. 2, identical with location corner and corner No. 1, Lakema Lode and corner No. 4, Queen Lode previously described, thence N. 57° 59' E. 1436.5 ft. to corner No. 3, identical with location corner, thence S. 25° 28' E. 665.5 ft. to corner No. 4, identical with location corner and corner No. 3, Lakema Lode and corner No. 4, Omega Lode, previously described, thence S. 46° 37' W. 1590.0 ft. to corner No. 1, the place of beginning, containing an area of 6,940 acres. Magnetic variation 32° 10' E.

Monitor Fraction Lode Claim  
Beginning at corner No. 1, identical with location corner and corner No. 1, U. S. Location Monument No. 3 bears S. 45° 20' W. 6377.6 ft., thence N. 50° 19' E. 1124.9 ft. to corner No. 2, identical with location corner and corner No. 1, Armitilla Lode previously described, thence N. 70° 59' E. 600 ft. to corner No. 3, identical with location corner and corner No. 1, identical with location corner and corner No. 1, American Flag Lode, and corner No. 4, Armitilla Lode, previously described, thence S. 50° 19' E. 1124.9 ft. to corner No. 4, identical with location corner, thence S. 70° 59' W. 600 ft. to corner No. 1, the place of beginning, containing an area of 13,239 acres. Magnetic variation 33° 10' E.

Richland Lode Claim  
Beginning at corner No. 1, identical with location corner and corner No. 5, American Flag Lode previously described, thence U. S. Location Monument No. 3 bears S. 38° 22' W. 6447.9 ft. to corner No. 2, identical with location corner and corner No. 3, Armitilla Lode previously described, thence N. 63° 48' E. 242.00 ft. to corner No. 3, identical with location corner, thence N. 49° 58' E. 581.6 ft. to corner No. 4, identical with location corner, thence S. 21° 19' E. 1500 ft. to corner No. 5, identical with location corner, thence S. 49° 58' W. 594.6 ft. to corner No. 1, the place of beginning, containing an area of 18,771 acres. Magnetic variation 33° 10' E.

Umattilla Lode Claim  
Beginning at corner No. 1, identical with location corner, thence U. S. Location Monument No. 3 bears S. 45° 20' W. 6377.6 ft., thence N. 50° 19' E. 1124.9 ft. to corner No. 2, identical with location corner and corner No. 1, Armitilla Lode previously described, thence N. 70° 59' E. 600 ft. to corner No. 3, identical with location corner and corner No. 1, identical with location corner and corner No. 1, American Flag Lode, and corner No. 4, Armitilla Lode, previously described, thence S. 50° 19' E. 1124.9 ft. to corner No. 4, identical with location corner, thence S. 70° 59' W. 600 ft. to corner No. 1, the place of beginning, containing an area of 13,239 acres. Magnetic variation 33° 10' E.

Hemlock Lode Claim  
Beginning at corner No. 1, identical with location corner and corner No. 5, Rambler Lode and corner No. 3, Jack Pine Lode previously described, thence U. S. Location Monument No. 3 bears S. 48° 26' W. 7101.5 ft., thence N. 49° 58' E. 550.1 ft. to corner No. 2, identical with location corner and corner No. 3, identical with location corner and corner No. 1, identical with location corner and corner No. 1, American Flag Lode, and corner No. 4, Armitilla Lode, previously described, thence S. 50° 19' E. 1124.9 ft. to corner No. 4, identical with location corner, thence S. 70° 59' W. 600 ft. to corner No. 1, the place of beginning, containing an area of 13,239 acres. Magnetic variation 33° 10' E.

Omega Lode Claim  
Beginning at corner No. 1, identical with location corner and corner No. 4, Jack Pine Lode and corner No. 3, Jack Pine Lode previously described, thence U. S. Location Monument No. 3 bears S. 48° 26' W. 7101.5 ft., thence N. 49° 58' E. 550.1 ft. to corner No. 2, identical with location corner and corner No. 3, identical with location corner and corner No. 1, identical with location corner and corner No. 1, American Flag Lode, and corner No. 4, Armitilla Lode, previously described, thence S. 50° 19' E. 1124.9 ft. to corner No. 4, identical with location corner, thence S. 70° 59' W. 600 ft. to corner No. 1, the place of beginning, containing an area of 13,239 acres. Magnetic variation 33° 10' E.

First publication Dec. 26, 1916.  
Last Publication Feb. 1, 1917.