

## FLAGSTAFF THE COMING NORTHERN ARIZONA METROPOLIS

The Town Which Has More Advantages and Better Prospects Than any Other in Northern Arizona

Nature is a wonder worker. In fact the wonderful works of nature are the expression of a master mind, the manifestation of marvelous power and master thought, are indisputable evidence of the handiwork of a marvelously clever designer. All nature bristles with the life and beauty of the creator, and with this thought in mind, the designer's expression of beauty and clever sense of harmony and love of the picturesque, the locality in which we live was no doubt one of the ideals of realism in these lines. Flagstaff is located in such a manner that all our surroundings speak in the most enchanting and impressive manner of the creator's desire for beauty in all its variations.

In the first place the town is situated in one of the most picturesque places in the world. North of us the great San Francisco Peaks lift their majestic heads heavenward, and, with pride akin to divine honor, overlook the

are coming to Flagstaff to spend the heated term, until now we are called upon to accommodate hundreds of visitors. It is a pleasure to know that there is such a really enjoyable place where the people may spend a delightful summer vacation.

As a summer resort we are ahead of any other section. Aside from the climatic conditions the natural attractions are a large asset. We have spoken briefly of the Grand Canyon, and next in importance are the Cliff Dwellings, which are within 10 miles of the city. Here ancient tribesmen made their homes and builded houses after their own crude ideas. Without going into the history of the people or their customs, these antique dwelling places carry with them in their silence a tale of worth and merit. The evidence of days of a primitive stage with the crude customs and peculiar methods make this place worth one's while. These dwellings are

Painted Desert is also a beautiful place. The Lava beds are always attractive and worth while. The Cinder Beds are, of course, very interesting. These attractions can all be reached within from 16 to 30 miles, over comparatively good roads.

### The Cave Dwellings

The Cave Dwellers ruins on the road to Sunset mountains are historic, antique and interesting. These are points of interest to those who come this way.

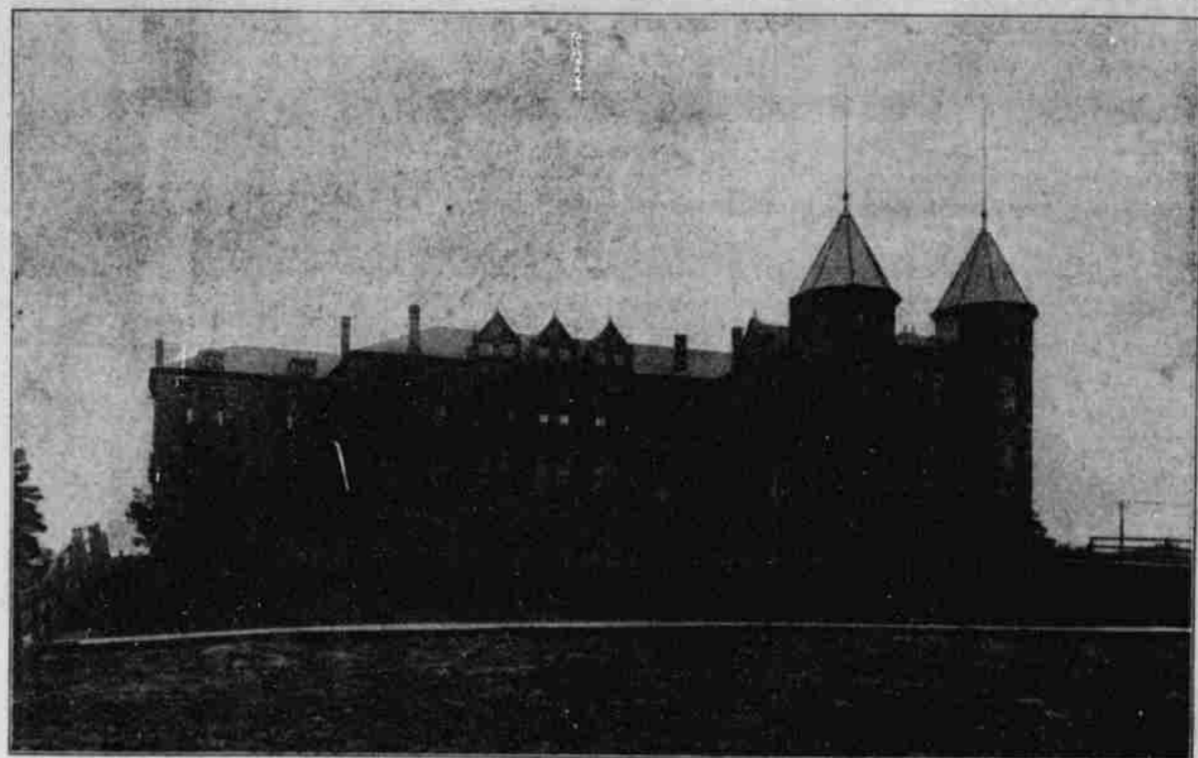
### The Aztec Ruins

The Aztec Indian ruins lie to the east of Flagstaff, and from Chavez Pass to Cedar Ranch Wash there are thousands of attractions in this line that carry with them not only interest, but history, tragedy, pathos and a bit of intelligent legendary customs that are worthy of study and examination. Perhaps the most interesting of all these ruins are situated just above the Charles Heiser ranch, some five miles.

Interesting ruins are also situated on the Navajo Indian reservation northeast of Flagstaff.

### Lowell Observatory

Just west of Flagstaff on the Mesa stands the great Lowell observatory, erected and owned by Dr. Percival Lowell. This observatory is one of the foremost institutions of the kind in the world. It is known and recognized all over the world for its discoveries and its correct calculations.



Northern Arizona Normal School

wagon road leads to it and it will repay those who come here to go out to it.

### Big Rim-Tonto Basin

The Big Rim and Tonto Basin are very prominent features of Scenic Northern Arizona. In this vicinity there are some of the finest views and scenery in America. It is useless for a writer to undertake to give a graphic description of the vastness and grandeur of this famous country. It must be seen to be appreciated. It is only a short distance from our city and when the auto high line is established it will be in line for thousands of visitors.

### Camp Sites

This is a larger country than one would surmise. All around us are beautiful and delightful camping grounds, and those who wish to spend the summer in an ideal climate will have to go no further than Flagstaff.

### Undeveloped Resources

In nearly all communities there are some undeveloped resources. Of course this is as it should be, for should all the resources be developed there would be no room for growth and expansion. But in this western country we hardly know yet what our real resources are. The stock interests are fairly well developed. The agricultural possibilities are yet unknown. The growing of crops and fruits is yet to be tried and tested. The timber interests are well developed. But such industries as the manufacture of cement, the construction of water reservoirs, the establishment of artificial lakes or reservoirs, the introduction of fish hatcheries, the development of the turpentine industry, the establishment of good auto high lines and various other industries will in time become a necessity. The breeding and raising of thoroughbred horses and cattle on a large scale, will be an attractive feature. There are good mining prospects close by. Many of our people are interested

in them. Many others might be mentioned.

### Business Opportunities

As the town is growing there are good opportunities for those who are seeking investment in business enterprises. At the present time there are openings in various fields, and those fields would not interfere with the enterprises now doing business in Flagstaff.

### Coconino National Forest

The Coconino National Forest contains an area of 1,634,000 acres. Flagstaff, Arizona, its headquarters, it extends north about thirty miles and southeast about seventy miles. It averages from 12 to 50 miles in width. Of the total area of the forest approximately 868,000 acres are covered with saw timber containing a total stand of approximately 4,800,000,000 feet b. m. Of this amount the Forest Service owns about 90 per cent and about 5 per cent of the total amount is in private hands, the remaining 5 per cent being situated on university lands. There are also about 570,000 acres of woodland, estimated to contain 3,500,000 cords of fire wood. The Forest Service owns and controls about 99 per cent of the total volume in this stand, less than 1 per cent being in private hands.

From present data on rate of growth the forest is capable of producing a sustained annual yield of 40,000,000 feet of saw timber per year and about 15,000 cords of cordwood. On account of the fact that government timber has not been utilized in the past the annual cut during the next few years will probably be about 8000 cords, and 35,000,000 feet saw timber.

Of the entire area of the Forest, about 95 per cent is government, 5 per cent is in private hands, and 2 per cent in university lands.

The government land within the Forest is for the most part covered

with an extensive growth of herbage of various kinds, forming one of the best natural ranges in Arizona. It is capable of supporting 34,000 head of cattle and horses and 90,000 head of sheep annually.

There are approximately 15,000 acres of land on the Forest suitable for agricultural purposes. Under the Act of June 11, 1906, a very large part of the area, not previously in private hands, has been withdrawn from the Forest Service and will ultimately pass into private hands. It is probable that in the near future the remainder of the agricultural land will be withdrawn from the Forest and homesteaded by settlers in this region.

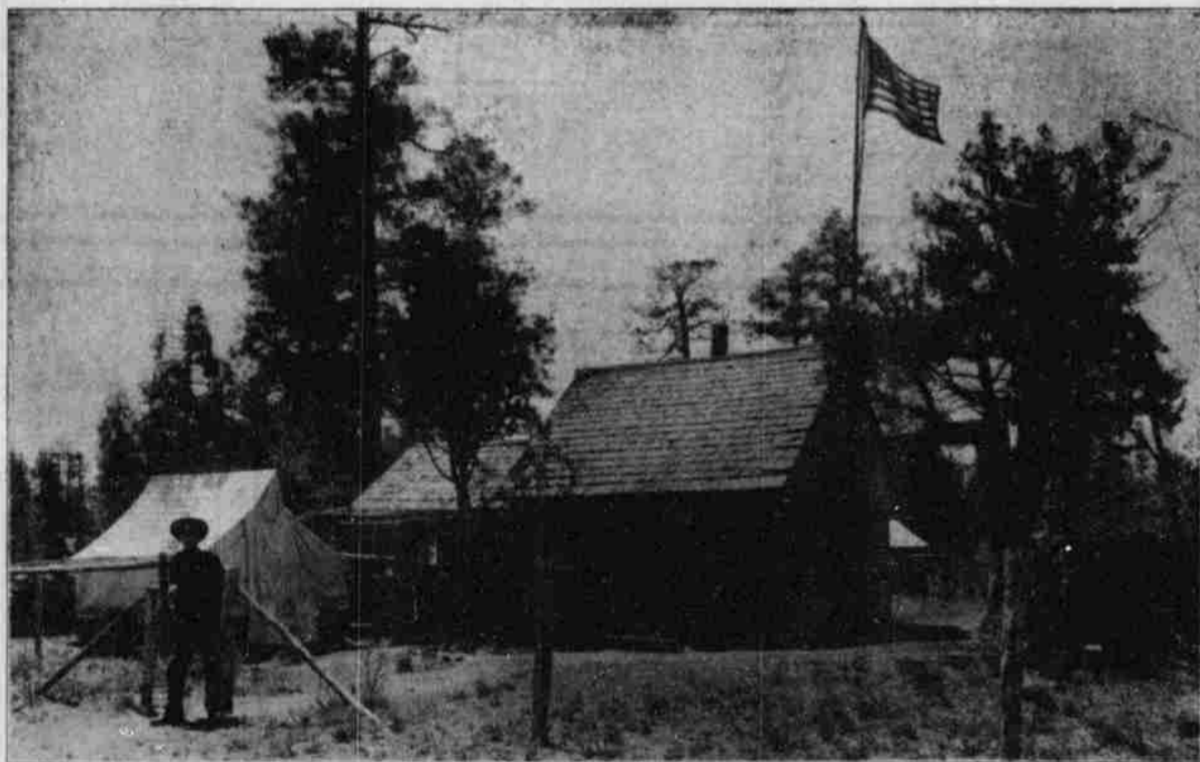
The present force of the Coconino Forest consists of 20 persons, who are so distributed over the area as to make the administration as economical as possible and to furnish the users and inhabitants of the Forest as much assistance as possible in their use of the forest and to protect the forest from fire. All users of the National Forest are required to assist the forest officers in the protection of the forest from fire.

The Forest Service has constructed on this forest, for its proper administration, 4 miles of trails, 77 miles of telephone lines, 26.2 miles of administrative fences, 20 houses, 6 barns, 6 corrals, 3 water development projects, as permanent improvements on the range, at a total cost of about \$22,000. It is intended in the future to spend from \$3000 to \$5000 a year for several years in further improvements.

During the six years ending June 30, 1911, the total income from this forest was about \$290,000 and the total expenditures were about \$157,000.

At the present time the State of Arizona receives 36 per cent of the net receipts of the Forest Reserves in the state for school

Continued on page four



Old Ranger Station, Walnut Canyon—Cliff Dwellings

surrounding country with a satisfaction all their own. To the south and west the hills are covered with stately pines, the king of the forests. To the east are fine fertile valleys and rolling hills. Certainly the artist has had no dream which could even approach this section.

Flagstaff is beautifully surrounded. It is the centre of a wonderful section.

Visitors coming to Northern Arizona are sure to enjoy Flagstaff.

In the first place let us call the attention of all to our greatest natural wonder, the Grand Canyon of Arizona. This great canyon is only a few hours ride from Flagstaff. The Grand Canyon is perhaps better known all over the world than any other one place on earth. Yet the more one visits that place the more fascinating and attractive it becomes. Its greatness grows on one. This is one attraction, yet we have many others.

Flagstaff is so situated that its summer climate is unexcelled anywhere. The cool nights and delightful days make it a most desirable place to live, while the people in other sections of the country are sweltering in the heat, it is cool and nice up here in the pines.

Each year increased numbers

situate in Walnut Canyon and are known far and near.

Montezuma Castle and Well are known to tourists and people who reside in this section. This famous castle and well are situated a few miles to the south of Flagstaff, where visitors will find beautiful scenery surrounding the historic and antique Montezuma centre of activities.

### Oak Creek Canyon

Oak Creek Canyon is the fisherman's paradise. This famous section is a secluded recess in the mountain wilderness where the mountain stream dashes down the rugged canyon on its hurried flight to sea, playing in the eddies and sporting in sunlight. The walls of the canyon are rocky and rough and the hills adjacent make the scenery very complete. The stream abounds with trout and other kinds of fish and it is here the angler spends many happy hours in his efforts to hook the speckled beauty. One must visit this section in order to appreciate its grandeur.

### Sunset Mountain

Near Flagstaff there are a number of extinct volcanic craters, each one a study within itself. Among these craters we find the beautiful "Sunset Mountain," and while on the peaks many others, some greater in size, and equally as attractive, may be seen. The

### Lake Mary

Lake Mary is a beautiful lake of water located about eight miles southeast of Flagstaff. The lake is surrounded by wooded hills and beautiful scenery. Various kinds of fish abound in its waters and it is a delightful place to camp and spend the heated term. It is within reach of the city and a good road leads to it.

### Rogers' Lake

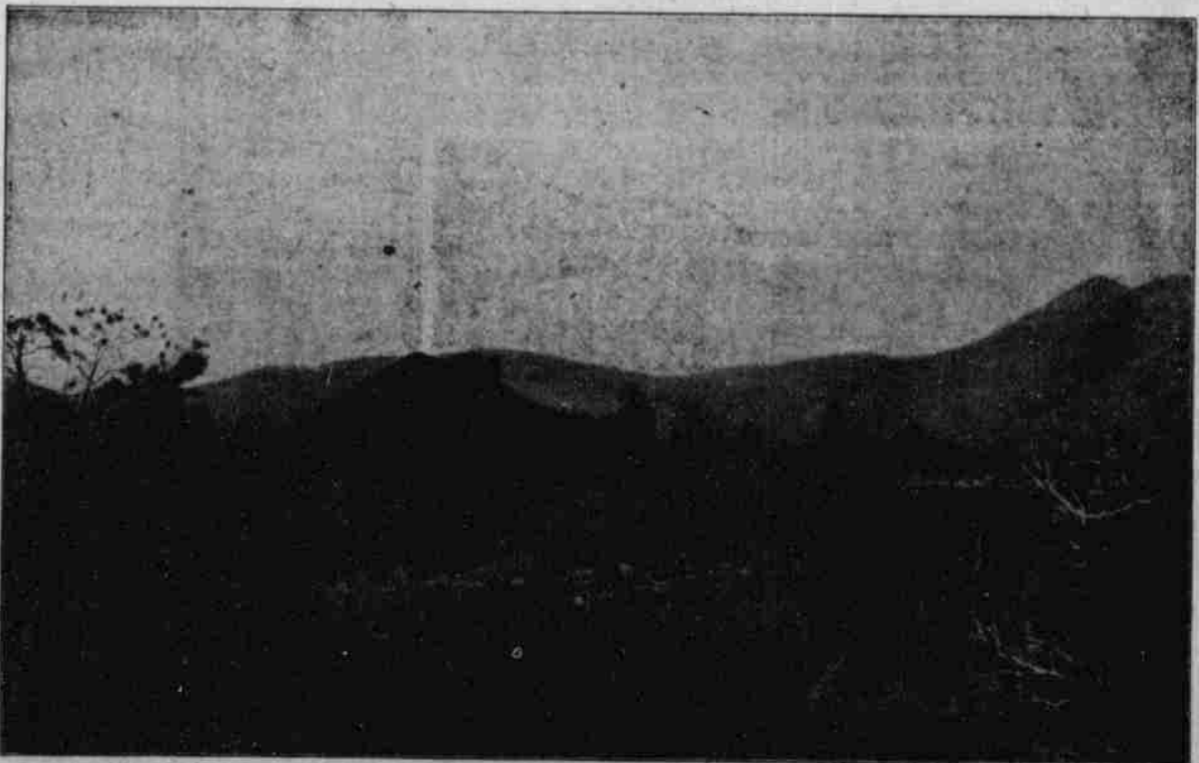
Ten miles to the west of Flagstaff is a beautiful body of mountain water, known as Rogers Lake. It has been known long to travelers and tourists as an enticing recess and pleasant camping place. Many people go there to spend the summer. A good road from Flagstaff makes it accessible to all. As our visitors become more familiar with its beauty and the splendid climatic conditions it will be a very much frequented.

### Mormon Lake

Twenty-five miles east of Flagstaff is found a lake known as Mormon Lake. It is much like other lakes of the vicinity and has many visitors and admirers.

### The Natural Bridge

The "Natural Bridge," situate near Strawberry, Arizona, is a natural attraction, and a genuine curiosity. It is one of the largest in the world and its peculiar and yet symmetrical form makes it indeed a real attraction. A fine



Scene Near Flagstaff