

ARIZONA ROADS LEAD INTO WORLD'S SCENIC WEALTH

Network of Roads Through
Pine-covered Hills, Snow-
capped Mountains and
Cacti-growing Deserts,
from Clime to Clime

Interest in the state roads of Arizona, as well as in the county roads, is at the present time as great as or greater than it has been at any time in the past. With the improvements the state has had in progress, with that work done and now going on, with the bond issue of Yuma county passed, and the proposed bond issue of this county still in the plans of the citizens, with the federal law at the present time before congress which will provide other and ample funds for more roads and better roads have taken on an aspect doubly interesting.

ing signed and marked. The farmers and the private citizens are taking an equal interest in keeping the roads. Those in the city and out of it are adding their equal quota of support and cash to the road funds. That the public may see just what this state is doing in the road business, and just how good are the numerous scenic routes now in the state, Harry Welch, secretary of the Phoenix and Maricopa Board of Trade, has written an article covering the roads of the state, telling where they lead, and what may be seen along their lengths. It follows: (By Harry Welch)

Arizona will, within the next two or three years, make strenuous efforts to put into effect a bond issue for road building. The amount that has been suggested for the state issue is \$5,000,000, and in addition to this amount there will be road bonds issued by individual counties.

What work has been done to date has been performed in the most satisfactory and thorough manner. The highest skilled labor to direct, and

the most expert engineers to design, have been secured in all branches of road construction. The result is today the marked improvement of road conditions throughout the state.

The amount annually expended by Arizona in the maintaining of roads is insufficient to properly do the work. The sum—\$300,000—will go a very little way, indeed, and it is only by the provisions of a bond issue that proper work, both for construction and repair, can be carried on. But the amount will be used to better advantage if it can be applied to keeping in repair a system of roads that have been well and liberally constructed under the provisions of a big bond issue.

A system of trunk line highways radiating from Phoenix, the capital city, to the different centers of population in the state, has been laid out by the state engineer. Some very important links in this system have already been constructed, and notably must be included some very important bridge structures. At Tempe, near Phoenix, and crossing the Salt river, is one of the finest concrete arch bridges in the country. This splendid structure was erected by convict labor and is a monument to the designer and the workmen.

The trunk lines are as follows: From Phoenix, there is the northern line, which goes through Prescott the "Mile High City," a splendid city beautifully situated in the hills, surrounded by pine forests, and the

center of an important mining area. From Prescott the road goes on to Ash Fork, then one branch to Williams and another to the Grand Canyon. The Williams arm runs on east to Flagstaff and then to Winslow. From Ash Fork, west, another road runs to Needles and the California line.

The road to the Grand Canyon is one of delight. It is through fine timber, and the scenery, with glimpses from time to time of the Grand Canyon, is of great beauty. From Flagstaff, Winslow and Williams are roads running north across the Painted Desert, and reaching the famous Indian villages of Sulpi and Orabi, the places where each year, alternately, the famous snake dances of the Hopi Indians are held. All of this northern country is rich in Indian lore, legend and remains. Rare ceremonies, interesting villages, quaint customs, strange dresses all vie with the ever-surprising view. Great rocks now gaunt and glaring, and again gruesome and gloomy. Smooth shining sands, variety of vegetation ever-changing aspect of cloud and sky. The mirage, luring, enticing and inviting to destruction. A weird land rich in "stuff that dreams are made of." The Painted Desert that once seen lives ever in the memory.

Within certain parts of this northern region abound streams alive with mountain trout, and not far distant are the homes of deer and bear. Other roads bring the traveler near the place of the well of Montezuma and cliff dwellings, one of the most extensive of which is the famous Montezuma's castle.

Back to Phoenix and now south and east through the valley of the Salt river to Mesa, a splendid town, one of the oldest communities in this farming region. Then Chandler, where the splendid Hotel San Marcos is situated. This hotel is one of the finest in the whole southwest—a pearl in an emerald setting. Comfort and convenience, charm and character mark the place. It is a very villa de tranon in a garden of delight. Then Florence, another old Arizona city, waiting the coming of a great irrigation project, which will make the surrounding acres blossom and bloom.

Near Florence is the Arizona state penitentiary. Here are humanitarian methods being carried out in an effort to do real good work. A spirit of helpfulness is the keynote of the institution. Good cheering tests of strength. Encouragement, betterment and uplift are evidenced in all directions. And it is to many of the unfortunate ones that much of the road work in the state is due, and more and more will each year be credited to their efforts and labor.

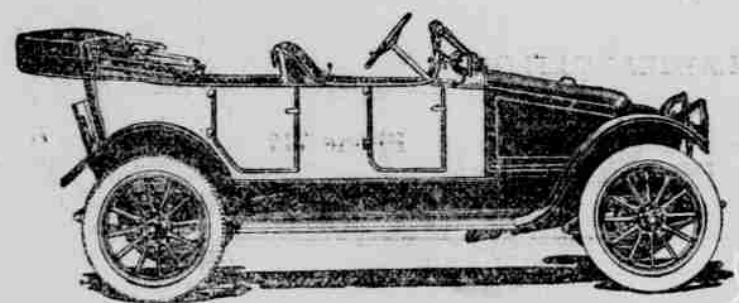
A flowing road across the desert, and we reach Tucson, "the Old Pueblo" City, one of the oldest cities on the continent. Here is the Mission San Xavier, the most beautiful mission building in the United States, a rare relic of a day long gone by; a link connecting the busy

(Continued on Page Five.)

What Tire Will Give the Best Mileage

If this is a problem with you, buy a Franklin "Six-Thirty," as all good tires give about twice the mileage on Franklins that is ordinarily obtained.

Ask Franklin owners about this.



Franklin Six-Thirty Touring Car
\$2500 F. O. B. Phoenix

GEO. HAGEMAN

Adams and Second Streets

Made and
Delivered in **24 Hours**

RUBBER STAMPS

A new departure for the convenience of our customers. We are now making Rubber Stamps three days each week.

| | |
|---------------------|------------------|
| ORDER PLACED | DELIVERED |
| Monday | Tuesday |
| Wednesday | Thursday |
| Friday | Saturday |

Write for Catalog

The McNeil Co.

Leading Stationers and Printers
Phoenix, Arizona

A POLICY OF COOPERATION

New Business Lighting Rates Make Big Reduction

The first month's bills to Business Houses for electric light under the new rates show a large saving to consumers.

The new Business Rates are based upon the equitable principle that the cost per K. W. H. shall be less to those consumers who use their light long hours. The February bills show that those consumers who use their light 100 hours per month or more get large reductions.

That there are a large number securing this reduction is shown by the fact that if the new rates had not been put into effect the February bills would have averaged 18% more.

**This Average of 18% on all Business
Lighting Bills Has Been Saved by
the Business Men of Phoenix**

Great satisfaction is expressed that this reduction is secured by those consumers who by their long hour use of light are entitled to the cheaper service.

**This Reduction Means That
\$18,000.00 a Year will be Saved
by Business Houses**

**The residence lighting reduction showed
a saving of \$15,000.00 a year.**

**A Total Saving in Business and
Residence Lighting of
\$33,000.00 a Year**

Pacific Gas and Electric Company