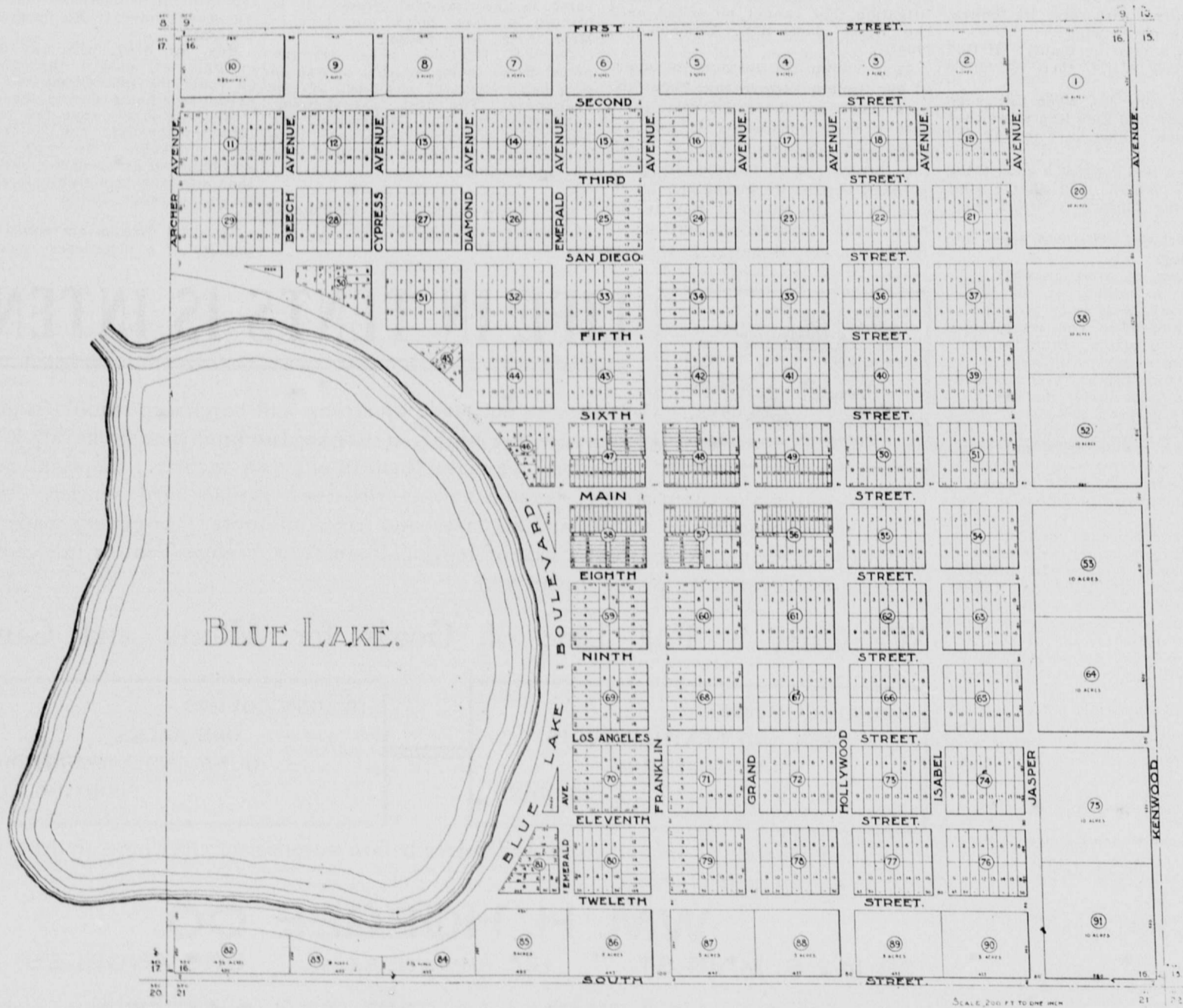


TOWN OF SILSBEE

ON THE EASTERN BANK OF BLUE LAKE



Imperial Settlements, San Diego County, California

This is one of the most picturesque lakeside town sites on the Pacific Coast, and is destined to be a very popular pleasure and health winter resort.

Fishing, hunting and boating cannot be excelled anywhere in Southern California.

A fine Drive—Blue Lake Boulevard—120 feet wide, encircles the lake, shaded by mesquite trees.

Lots now on Sale at from \$50 to \$175 each.

Call on or address,

IMPERIAL LAND COMPANY

224 Stowell Block, Los Angeles, Cal.