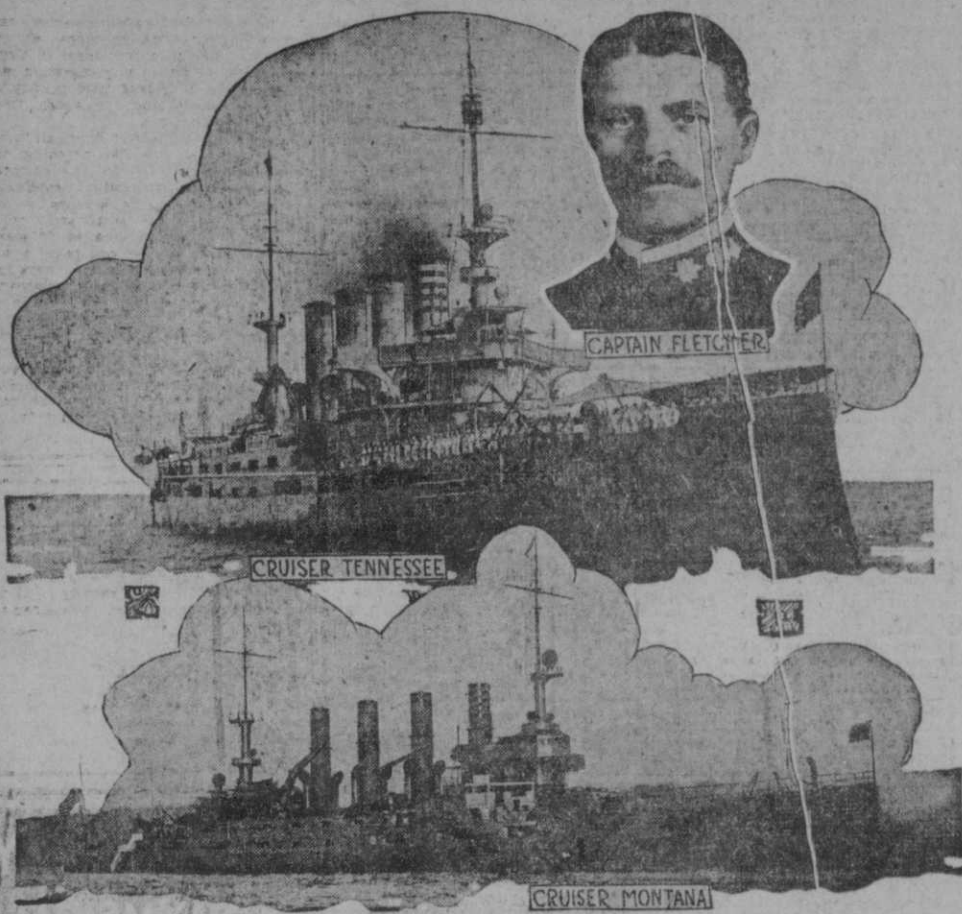


Armored Cruisers Tennessee and Montana Will Leave Philadelphia at Once With Marines for Turkey



PHILADELPHIA, Nov. 12.—The armored cruisers Tennessee and Montana are being fitted as rapidly as possible for the journey to Constantinople. Marines from all the navy yards on the Atlantic coast are headed in this direction to be rushed to the defense of American citizens and missionaries in the Orient. In addition to the full complement of 700 bluejackets that each ship will carry as a crew, one company of marines

will go on each cruiser. The two cruisers are sister ships, and each carries four ten-inch guns, fourteen six-inch guns and eighteen three-inch guns. The displacement of each is 14,500 tons, and they can make better than twenty-two knots speed, but will proceed at fifteen knots, with the expectation of reaching Constantinople by Nov. 24. The two cruisers will provision simply for their own crews and will not carry food sup-

plies to relieve possible destitution. They will coal at Gibraltar on the way to Constantinople, and during the six months that they will probably be stationed in the Bosphorus their coal supply will come from Alexandria, Egypt. Rear Admiral Austin M. Knight will command the special squadron. The Tennessee will be commanded by Captain Harry A. Field and the Montana by Captain W. B. Fletcher.

INTERNATIONAL SUNSHINE SOCIETY

The International Sunshine Society, Delaware Division.

President General, Mrs. Cynthia Weaver Alden, 26 Fifth Ave., New York, N. Y.

State President, Mrs. G. W. Dorsey, Jr., 2091 Jefferson St., Wilmington, Del., Phone 2421-D.

International colors, Yellow and White. The Yellow is symbol of the golden sunshine; the White signifies the purity of purpose.

Delaware State color, Peacock blue. The object of this society is to induce its members to a performance of kind and helpful deeds and thus bring the sunshine of happiness into the greatest number of hearts and homes.

The International Sunshine Society starts out with the idea that the rich as well as the poor need cheering, and the membership is composed of people in all kinds of circumstances. We have found that wealthy people are often misjudged. People were never more benevolently inclined than at the present time, so let us be generous in our thoughts.

"Do all the good you can in all the ways you can, to all the people you can, whenever you can."

A Cheerful Idea. A Sunshiner who signs her letter "The Clover," writes as follows:

"Before sailing last June, I took several names from your magazine (Sunshine Bulletin) and have sent post cards every week, having asked them to travel with me in this way. Now I am sending them return cards addressed to you, to say, if they have joined in writing the cards. Perhaps if you get answers from these shuttles they may inspire other travelers to do the same on their journeys."—Sunshine Bulletin.

The Sunshine Bulletin is the official magazine of the International Sunshine Society, edited by Mrs. Alden, issued monthly, and contains an interesting bulletin of the news of the society all over the world. One page is entitled, "Where to Send Cheer," edited by Mrs. Edith A. M. Casey and gives the names and addresses of shut-ins and their needs, also sunny poetry; another is devoted to the "Four Score Branch." Men and women everywhere who are 80 years old are members of this branch, their addresses and birthdays are on the "Four Score Page." "Junior Department," by Miss Florence M. Layton, a Department for Blind Babies work. The Ways and Means Department reports from the various States, etc., all combine to make this a valuable paper and especially so to those interested in this society many good ideas can be obtained from it for local work. The subscription price is only 50 cents, so place your subscription with one shut-in magazine man L. W. Prettyman, 709 W. 8th St., and keep in touch with general headquarters; if you don't you are like a telephone cut off from the central office.

We desire through this column to thank Mr. and Mrs. S. H. Baynard, who entertained our blind friends on their lawn the night of the Saengerbund Concert. Such sunshine to the blind is highly appreciated by this society as well as by the blind themselves.

We also extend our thanks to Mr. T. H. Cappeau, the druggist, who so kindly donated the pretty tickets for the dance held on Oct. 9th in Pythian Castle. The affair was a success both socially and financially and much credit is due the committee for its capable management.

The Delaware Branch will hold its next regular meeting on Tuesday Nov. 19, at the home of Miss Elizabeth Hellings, 1103 W. 7th St. The president is trying to secure a small coal cook stove, for a very worthy family. If you have one to "pass on," please telephone 4335-D. This branch will hold a rummage sale on

Saturday, Nov. 16, at 100 W. 8th St. and would be thankful for donations. The invalid's reclining chair is not in use at present. This chair can be adjusted to various positions for comfort, but it is not a wheel-chair. Any one desiring to use it should telephone the chairman, Miss L. J. Danks, 269-D. All the wheel-chairs are in use at present and greatly appreciated. If any one has a wheel-chair to give away or to sell at a reasonable price, phone 4335-D.

The Cythia Helpers held a meeting on Monday evening, Oct. 23, at the home of Mrs. Armstrong. 22 members were present. After the transaction of business, a humorous letter was read by Mrs. Sparks, the secretary, giving an account of the

trip to Philadelphia, when the branch met there for the preceding meeting. Mrs. Armstrong, the hostess, assisted by her daughters, served refreshments. Miss Edith Francis, of the Delaware Branch was a guest at this meeting. The meeting next Tuesday evening will be held at the home of Mrs. W. Coale, 230 W. 17th St. The members are requested to wear masks for a social meeting.

THATCHER UNION MEETING. The L. M. Thatcher Union, of the W. C. T. U., will meet in the home of Mrs. Emma Lank, No. 1401 West Sixth street, on Wednesday afternoon.

Read THE EVENING JOURNAL.

Serious Costly Sickness

is far too sure to come when your bodily strength has been undermined by the poison of bile. Headaches, sour stomach, unpleasant breath, nervousness, and a wish to do nothing are all signs of biliousness—signs, too, that your system needs help. Just the right help is given and the bodily condition which invites serious sickness.

Is Prevented By

timely use of Beecham's Pills. This famous vegetable, and always efficient family remedy will clear your system, regulate your bowels, stimulate your liver, tone your nerves. Your digestion will be improved, your food will nourish you and you will be strong to DO and to resist. You will feel greater vigor and vitality, as well as buoyant spirits—after you know and use

Beecham's Pills

The directions with every box are valuable—especially to women. Sold everywhere. In boxes 10c, 25c.



Visit the
KODAK EXHIBITION

To be given at the Horticultural Hall, Philadelphia, November 11 to 23.

This exhibition is given through the enterprise of the Eastman Kodak Co. and consists of a display of several hundred pictorial enlargements, illustrated pictures by Dr. William T. Stuchell and fascinating motion pictures.

Exhibition opened Monday evening, November 11, at 7 o'clock. Lectures at 8 o'clock.

Open November 12 to November 23, inclusive, 2 p. m. to 10 p. m. (except Sunday). Lectures, 3 and 8 p. m.

We carry a complete line of Eastman goods at all times. By calling at our store we will present to you a complimentary ticket to this exhibition.

Miller Drug Co., 404-406 Market St.

We Can Help You Beautify Your Home

This square deal store with its great stock and liberal CREDIT PLAN enables you to have a cozy home at once. Begin your planning now, and let us advise and assist you. Our whole organization is at your service. *If an article is here it is good. It wouldn't be here were it otherwise.*

Now Is the Time to Replenish Your Dining Room for Thanksgiving Below Are a Few of Our Dining Room Specials

SALE OF SEVEN PIECE DINING ROOM SUITES \$24.50



Think of it—seven pieces—six chairs, royal leather seat, and oak extension table with quartered oak top and handsome pedestal. There is no better bargain anywhere or we wouldn't sell so many of these sets; at least worth \$35.

\$24.50

\$24.50

Easiest Terms on Earth

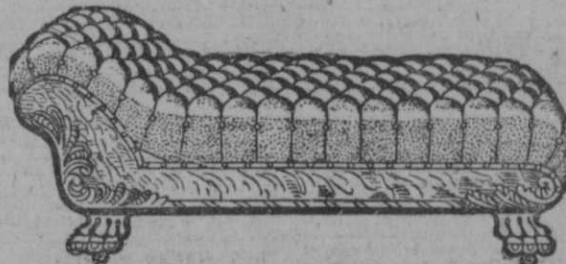
Special Sale of China Closets, \$13.98

It is an exceptionally well constructed closet made of best quality oak, finely polished; has 3 shelves and is sold regularly for \$22.50.

SALE PRICE \$13.98

COMPLETE LINE OF DINING ROOM CHAIRS

These Handsome Couches \$8.98



It is an exceptionally well constructed Couch. The frame-work is made of best quality oak. Full steel springs, deeply tufted, secured by metal buttons, and will not pull out. The filling is of the best quality. Covered in Royal leather, velour or corduroy. Sell regularly for \$18. Sale price **\$8.98**

A SPECIAL BUFFET \$13.98

It is 4 ft. 6 in. high, 3 ft. 6 in. base. Extra large beveled mirror in the finest quality of selected American quartered oak. In appearance exactly like cut. Must be seen to be appreciated. Regular price \$28. Sale price, **\$13.98**

\$13.98

Easiest Terms On Earth.



Ladies' Coat Suits, Etc.



The very newest idea in Coats—the cutaway style, made of heavy fabrics, finely tailored; lined and trimmed. Excellent \$15 value, for **\$9.75**

EASY TERMS. \$25.00 SUITS, \$13.98.

New ROBESPIERRE collar styles with cutaway coats, or plain tailored models. Very finely tailored; large selection of patterns and colorings. All-wool; lined with satin. Regular \$25.00 values **\$13.98**

EASY TERMS. PAY AS TO YOUR OWN CONVENIENCE. MAKE YOUR OWN TERMS.

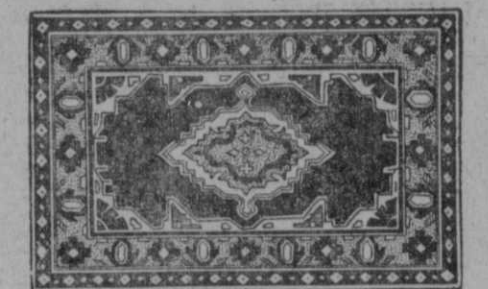
Store Open Tuesday and Saturday Evenings. We invite Comparison. Our Prices Are Always Lowest.

OGDEN-HOWARD & CO.
5th & KING STS. WILMINGTON DEL.
GREATEST BARGAIN FURNITURE STORE IN WILMINGTON

RUG SALE

Room Size Brussels Rug, **\$11.98**

Genuine Axminster Rugs, Room Size, **\$23.98**



9x12 Matting Rugs, \$3.98

Lowest Prices. Easiest Terms.

No strictly cash store can show you a more beautiful collection of Suit and Coat styles, nor better values than we offer on long time, easy-paying terms. Let us show you how well we can do by you in the matter of outerwear.

\$15.00 COATS, \$9.75.

The very newest idea in Coats—the cutaway style, made of heavy fabrics, finely tailored; lined and trimmed. Excellent \$15 value, for **\$9.75**

EASY TERMS. \$25.00 SUITS, \$13.98.

New ROBESPIERRE collar styles with cutaway coats, or plain tailored models. Very finely tailored; large selection of patterns and colorings. All-wool; lined with satin. Regular \$25.00 values **\$13.98**

EASY TERMS. PAY AS TO YOUR OWN CONVENIENCE. MAKE YOUR OWN TERMS.

Store Open Tuesday and Saturday Evenings. We invite Comparison. Our Prices Are Always Lowest.

OGDEN-HOWARD & CO.
5th & KING STS. WILMINGTON DEL.
GREATEST BARGAIN FURNITURE STORE IN WILMINGTON

Men's Suits and Overcoats

\$13.98



\$25.00 OVERCOATS, \$13.98.

These overcoats are conservative in style and splendidly tailored and perfect in fit; black and colors. All sizes.

EASY TERMS.

\$25.00 SUITS, \$13.98.

They are absolutely all-wool; newest style; well made, splendid fitting garments. All sizes. Worth **\$25.00. Special price \$13.98**

EASY TERMS.

ALTERATIONS FREE.

Saving Each Customer from \$3 to \$10 on Each Purchase.

Your Credit Is Good