

BACK TO SCHOOL

By W. E. Hill

Copyright 1941 by News Syndicate Co., Inc.



Glamour boy. Earned his letter in baseball last term but Summer vacation came before he could air it around for the co-eds to see. The ones who try to look like Lana Turner. He'll make up for it this Fall.

Earnest student. The family thinks he studies too hard. So this term he's going out for track.



Six lovely finishing school girls and one worried teacher all set for the trip back to old Penn Manor. (The girls will take turns being sweet to Miss Cole and asking did she have a marvelous vacation.)



Sentimental girl. Just itching for the Fall term to begin. Dying to see her classmates again and walk the tree-lined campus and curse the house-mother who is too strict. Knows most of the words of Alma Mater and sings them over and over. Just a real little pal, her roommates say.

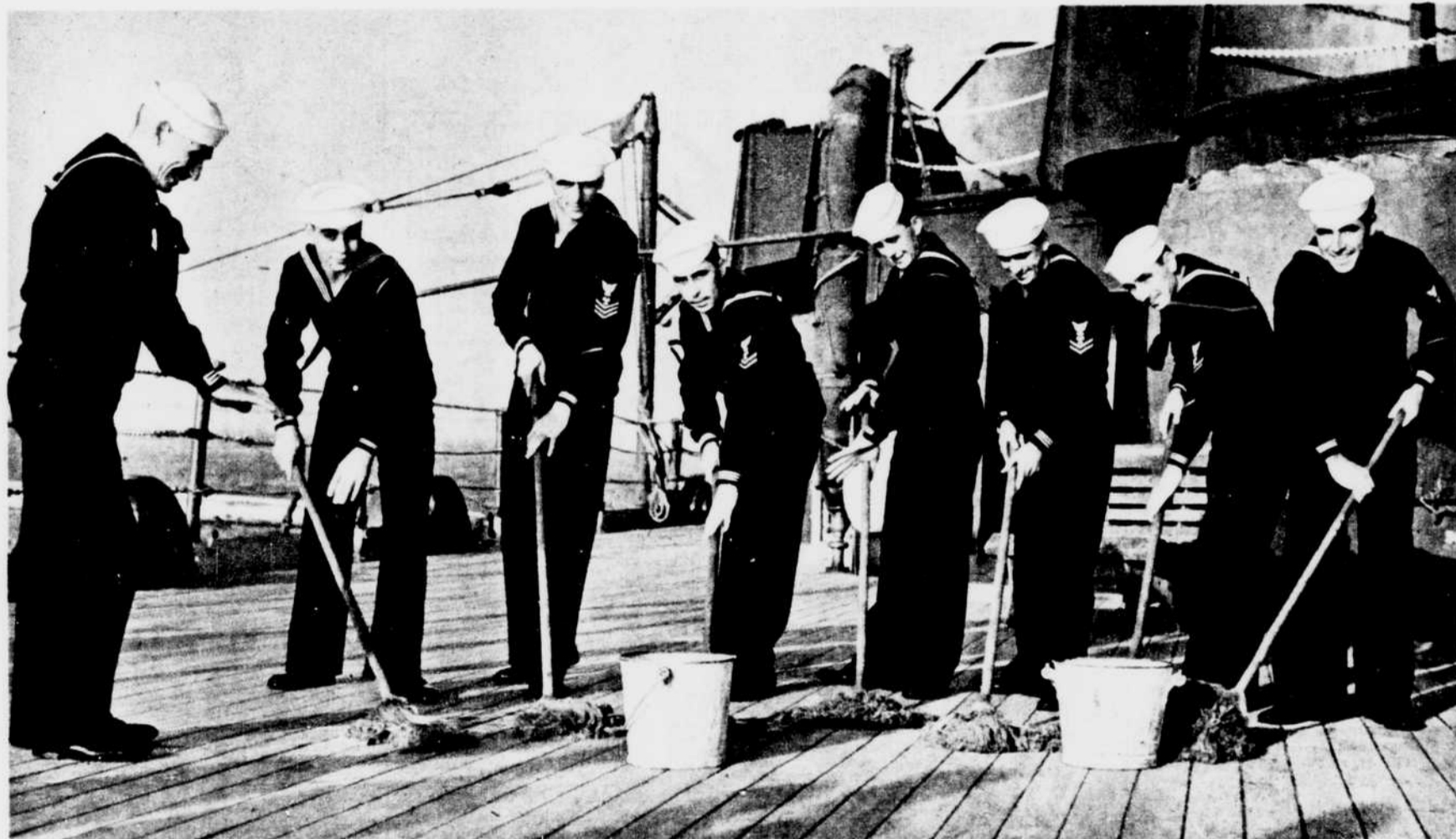


Fraternity pledge. The brothers aren't too happy over it, but there's pressure from a rich alumnus. And they need a new house.

Popular boy. Tops in everything. Track, baseball and football. And is headed for Phi Beta Kappa. Everyone likes him. Even the fraternity brothers whose house party girls take a shine to him.



Just the good old college spirit. Showing a gang of sophomores disciplining a freshman the hard way. Says the leader, "Get us the name and phone number of that blonde filly walking by!"



Gives seven sons—and himself—to Uncle Sam's Navy. Clarence Floyd Patten of Ridgefield, Wash., superintends a bit of deck swabbing by his seven sons serving enlistments with him aboard the battleship Nevada. They are, left to right, Bruce, Gilbert, Clarence, Ray, Myrne, Marvin and Allen.

Wide World Photos.

YOUR QUALITY IN TIRES

The name Goodrich on a tire is like Sterling on silver—that's why we can offer you a certified Lifetime Guarantee on the

B. F. GOODRICH COMMANDER TIRE

6:00x16 \$6.95

We can make you this special price—but we cannot guarantee it will last. We Made the Value—You Make the Terms.

LIFE-TIME GUARANTEE

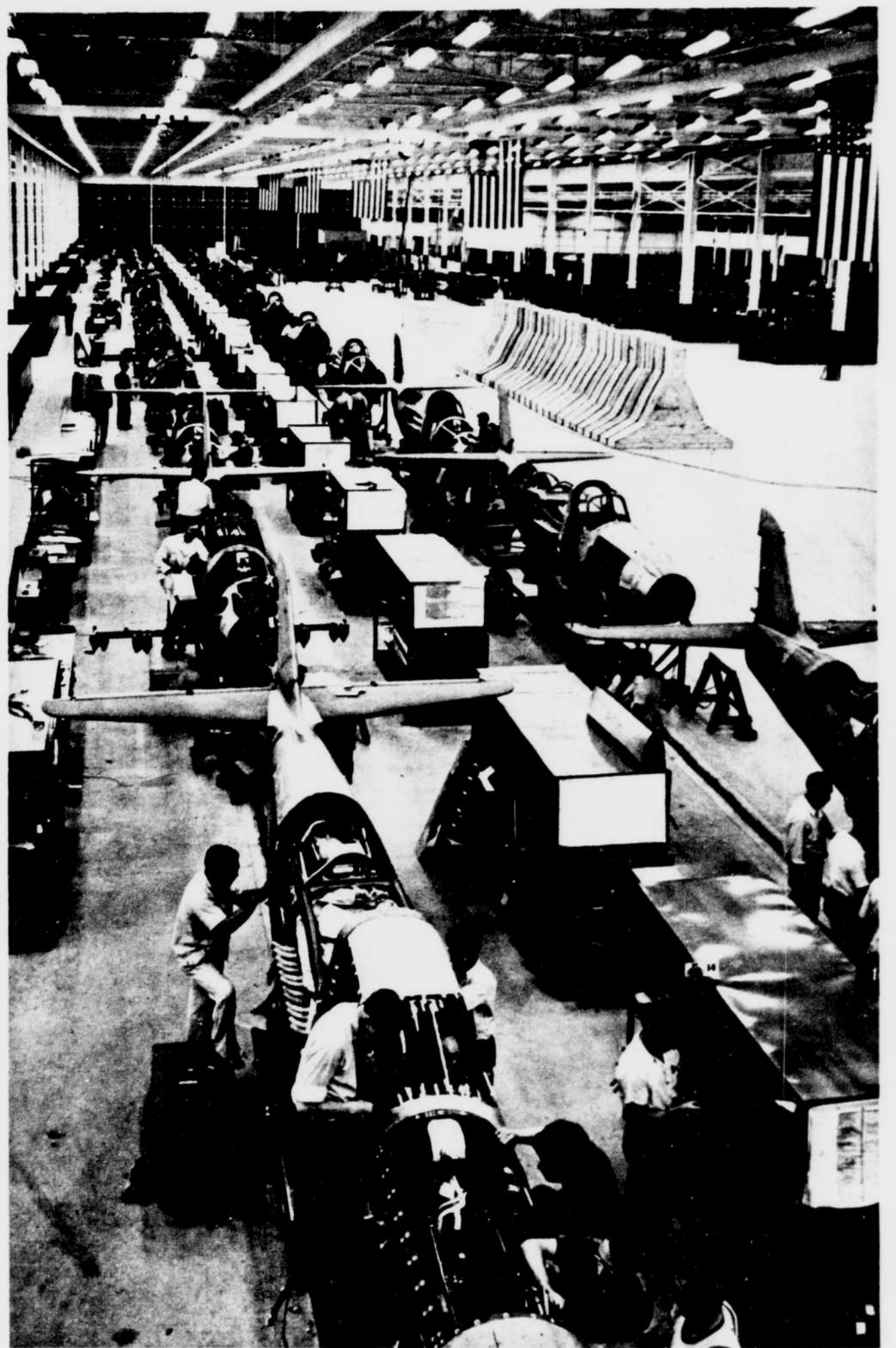
We guarantee the Commander not for the entire life of the tire.

Washington Rubber Company, Inc.

14th & Belmont Sts. N.W. HObart 5500



Don't wear it in the woods! The young lady in this antler hat may be in style around Banff, Alberta, where the moose roam, but it would be too bad if she were mistaken for a real one.



Swift fighting planes in "endless chain" production. This view of the Bell Aircraft Corp.'s new assembly plant at Niagara Falls, N. Y., shows the second power-driven assembly line of Airacobras which has just been placed in operation. Fuselages, cradled in steel dollies, move steadily up the line connected to a moving chain flush with the floor. Provision is made for opening up four more such power-driven lines in this plant standing on a site which less than a year ago was farmland. The War Department recently increased its contract for Airacobras by \$75,000,000. Many also are under production for the Royal Air Force.

Facts...

People have often wondered how Chambers can provide a funeral of such dignity at such a low price. The answer is simply that Chambers effects great savings through vast purchasing power, and passes those savings on to you. That's why Chambers is One of the Largest Undertakers in the World.

See this space for an additional fact next Sunday.

Chambers provides 60 or more Services with each Funeral regardless of its cost

W. W. CHAMBERS

Here's an example of Chambers' sound value at a reasonable price—

\$265 Includes All Metal Casket and 60 or more Services

W. W. Chambers originated and introduced this \$265 metal casket to Washington. It has been used by thousands of families—many of them having expressed amazement in learning that this kind of metal casket in a complete funeral can be obtained at such a reasonable price. Just another example of Chambers' tremendous buying power.

Four Modern Funeral Homes

REMEMBER: For Funerals, Flowers or Ambulance Service Call CHAMBERS

Complete Funerals Casket and All as Low as \$95

The Greater **Chambers Co.**

1400 Chapin St. N.W. CO. 0432 517 11th S.E. AT. 6700 31st & M N.W. MI. 0123 Riverdale, Md. WA. 1221