

Beautiful WYKAGYL PARK

The Garden Spot of Westchester
35 Minutes from Grand Central Station



In the Green Hills of Westchester County

In New Rochelle's Beautiful Residential Section WYKAGYL PARK

Wykagyl Park is in the heart of New Rochelle's beautiful residential section, in the green, rolling hills of Westchester County, overlooking the Sound. It is an ideal spot for those who wish quiet and exclusive surroundings and still be within easy access of New York City.

The unparalleled advantages of Wykagyl Park are its healthful location, its picturesque and artistic topography and the exceptional contour of the plots and acreage offered to those wishing to build for residential purposes.

Wykagyl Park is in the midst of large estates and is considered the most attractive of all residential parks near Greater New York.

The New Rochelle Tennis Club is located on the property, and the Wykagyl Country Club adjoins.

Plots and acreage are offered at most attractive prices. Now is the opportunity to select a building plot to your own liking and from a wide variety of kinds.

With woodlands, fields, lakes and streams, winding drives and picturesque topography, Wykagyl Park fulfils the fondest hopes of the home builder.

TRANSIT:

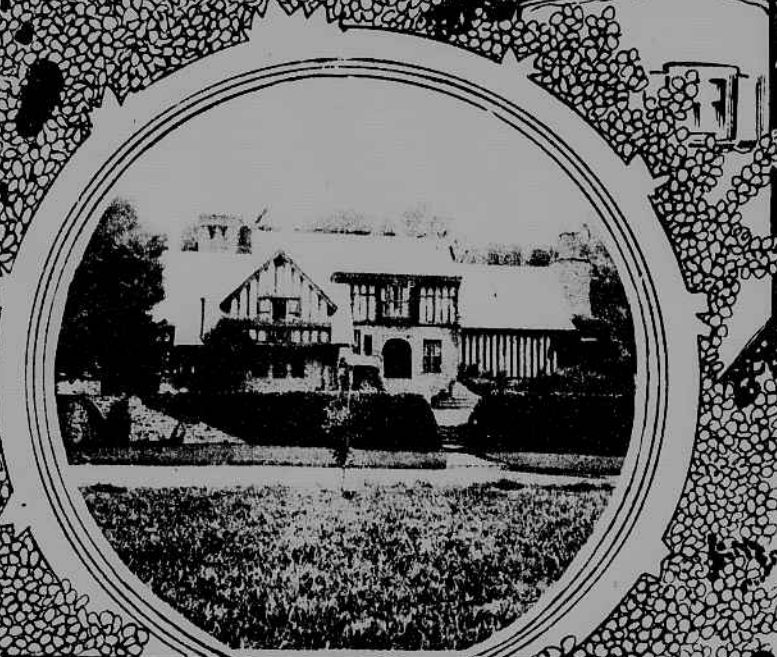
Wykagyl Park is convenient to the New York, Westchester & Boston Railroad—"The New Road." Trains every 20 minutes. And within easy access of New York, New Haven & Hartford Railroad Station. 30 minutes to Grand Central Station, New York.

For further details write for map and descriptive booklet or call at office on the property.

WYKAGYL HOMES CO., Inc.

115 Broadway
New York City
Telephone 488 Rector

North and Paine Aves.
New Rochelle, N. Y.
Telephone 3757 New Rochelle



Home of
C. A. BRIGGS
Wykagyl Park



Home of
E. C. WETTLAUER
Wykagyl Park



Home of
F. A. KETCHUM
Wykagyl Park



Home of
CHAS. G. E. FITCH
Wykagyl Park



Home of
JOHN SHEA
Wykagyl Park



Office of
WYKAGYL HOMES CO., INC.
On Property