

Commerce building, home of the census bureau, where 1920 census reports will be compiled.

All Ready for the 1920 Census Facts and Figures

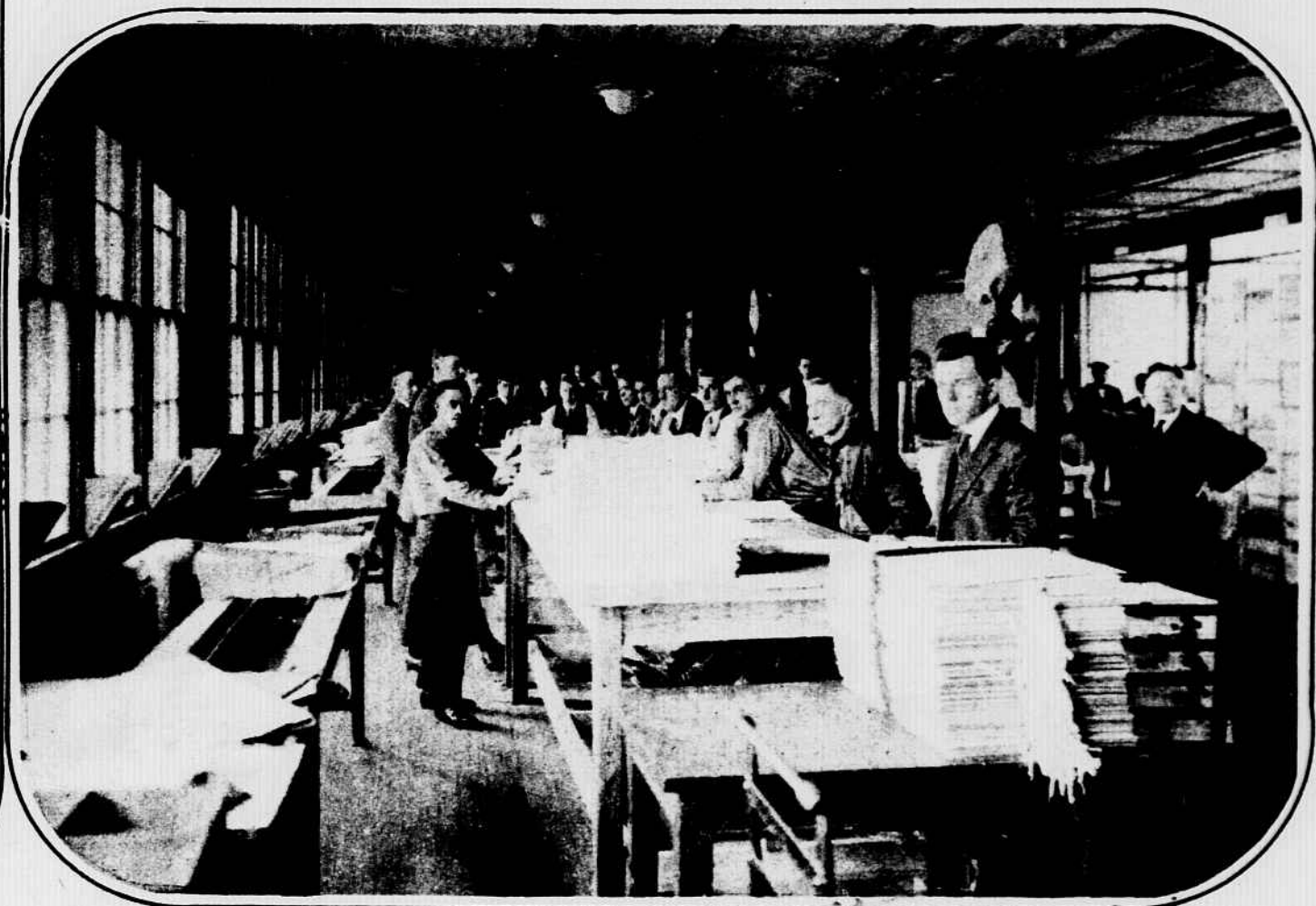
Photos by National Photo Co.



Samuel L. Rogers, director of the census, at his desk. It is Mr. Rogers' job to supervise data regarding every man, woman and child in the United States.



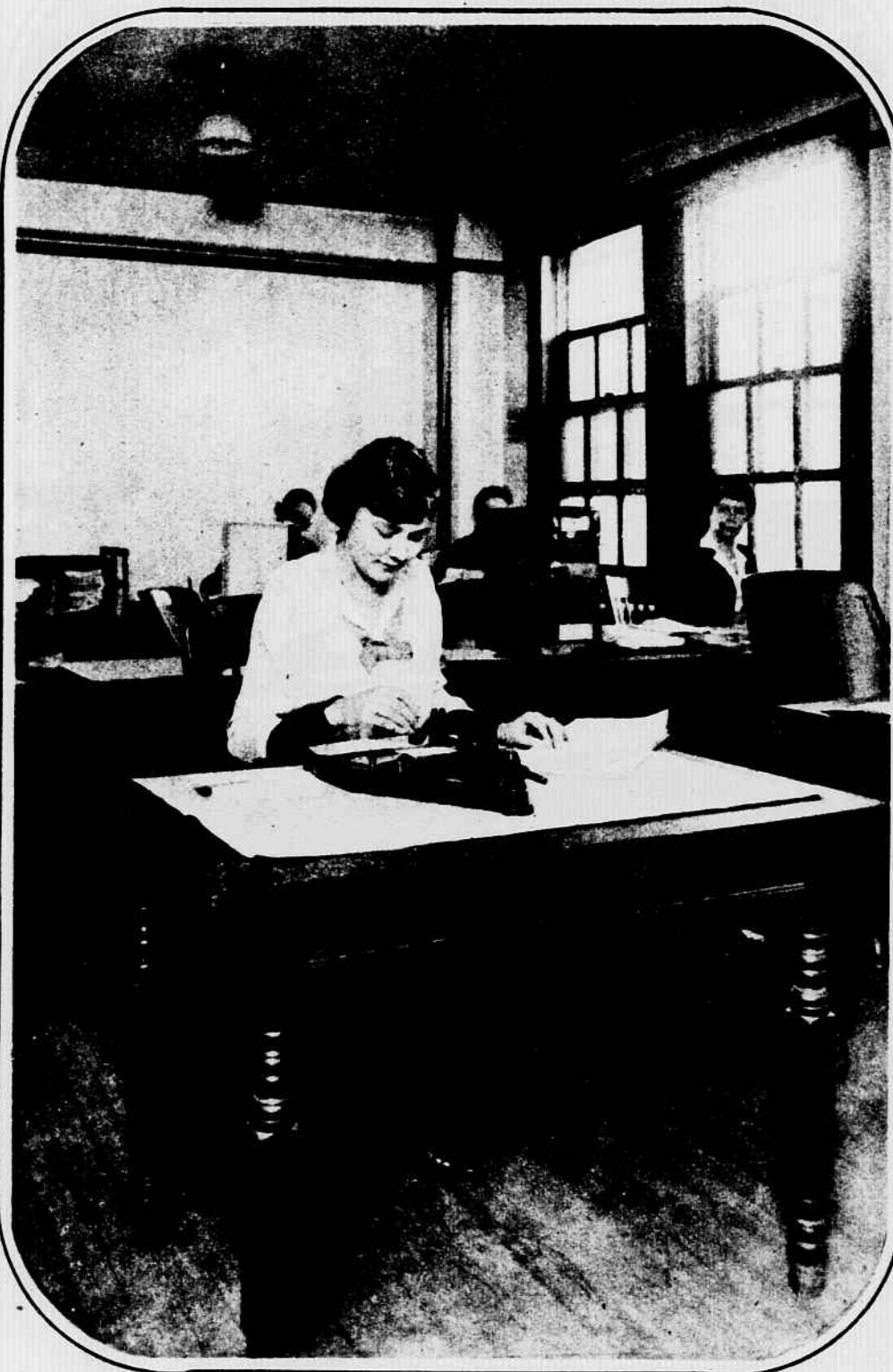
The division of vital statistics, one of the busiest sections of the census bureau.



It is estimated that the fourteenth census will show a population of 115,000,000 persons. The force of enumerators will be equal to three whole army divisions. These workers in the bureau are preparing query sheets for the enumerators.



Automatic tabulating machines with capacity of 300 cards per minute. These will be a big factor in reducing the cost of labor of the 1920 census.



The punching machines used in the census bureau are operated by girls who are especially trained in the work.



An automatic sorting machine which sorts cards into twelve groups with a speed of 400 cards per minute. The greater part of this work now done by machines was formerly hand work.