

at KANN'S

Washington, Penna. Ave. at 8th St. N.W.
Arlington, N. Fairfax and Kirkwood



Just in time for Decoration Day!

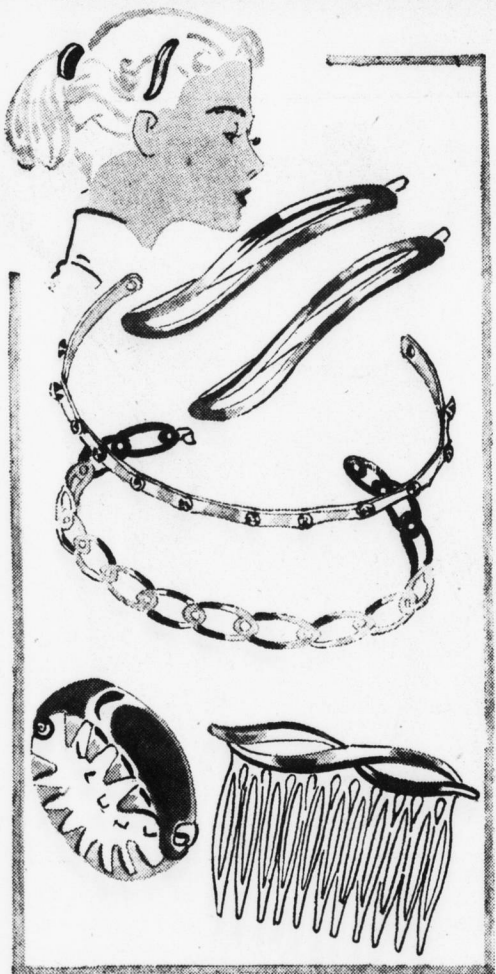
FROSTY WHITES

glistening straw!—crisp pique!—frosty lace!

3.99

How do you like your white hat? Large brim, cool and shady? Or do you prefer one of the "little" hats that feel like no hat at all, but look completely devastating? Kann's has both versions, and all the styles and sizes in between . . . in all the lovely straws and fabrics of summer. Plenty of 23-inch head sizes.

Second Floor, Washington and Arlington



There's a Gleam In Your Hair

good groomers and chic accessories
for sport car fans and outdoor girls!

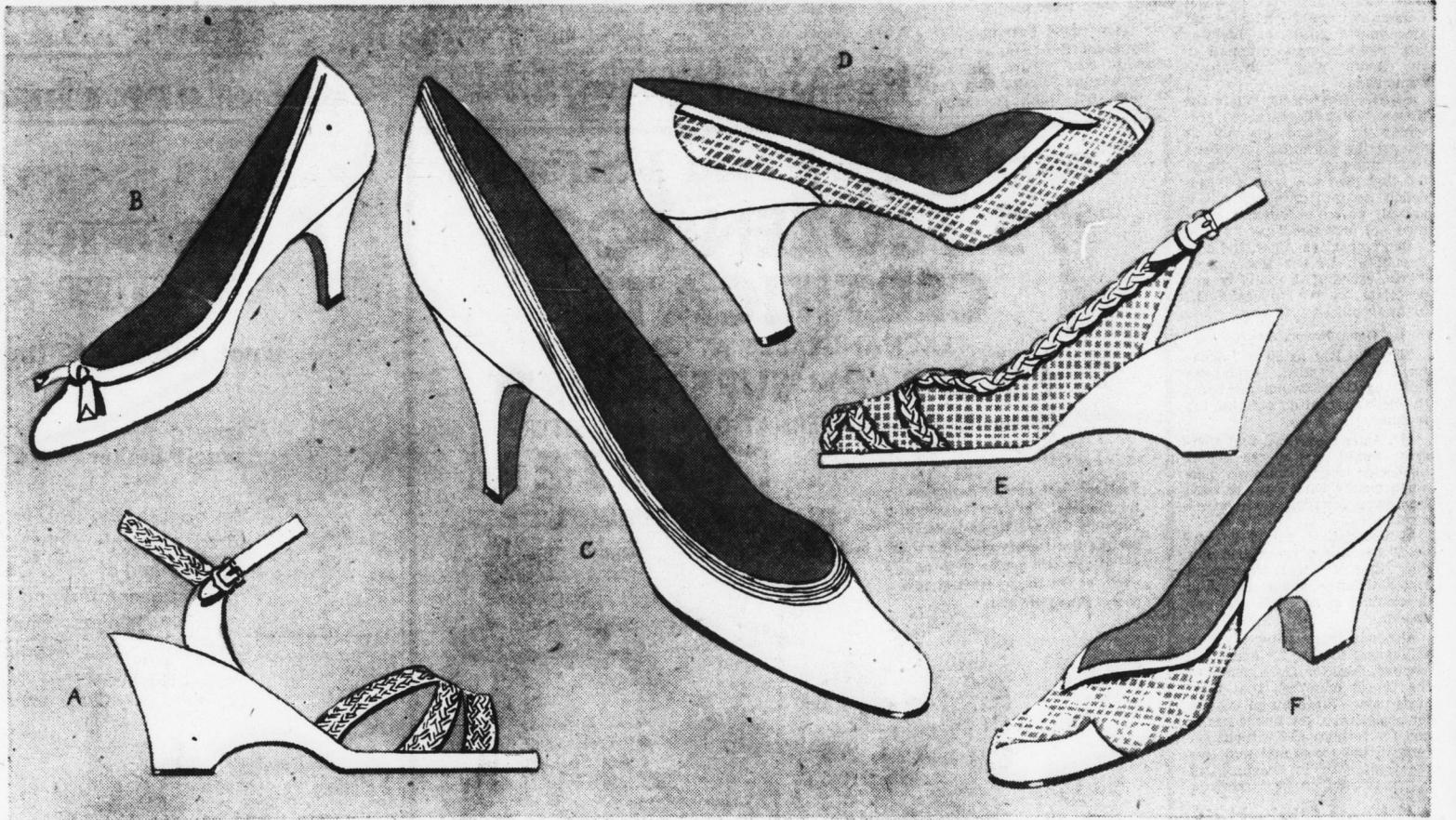
50¢ and 1.00*

Brightest ideas of the Summer! Barrettes . . . bandeaus . . . pony tail rings . . . tuck combs to keep any coiffure you can concoct under perfect control! And what pretty accessories they are, too . . . gleaming gold or silver color metal, some studded with rhinestones. Combs come in mock tortoise or crystal.

*stone set styles plus 10% tax

Street Floor, Washington and Arlington

Shop Saturday—Both Stores Closed all day Monday—"Memorial Day"



Frosty WHITE NATURALIZERS . . .

the Shoes with
the Beautiful Fit

For every hour of your Summer day . . . there's a Naturalizer! Spirited young casuals to mate with vacation and week-end clothes . . . glistening white calf pumps for town . . . lacy nylon meshes for the gay hours. All in beautiful white . . . smartest seasoning for pastels . . . dramatic accent to black. Sizes 4 to 10, AAAA to C.

8.95 and 10.95

A. Fiesta, white straw casual,
8.95

B. Nantucket, tailored white
calf pump 10.95

C. Swerve, white calf sweat-
er pump 10.95

D. Caribbean, white mesh
and calf pump 10.95

E. Nevada, white mesh and
calf sling casual 8.95

F. Low Amazing, white calf
pump with walking heel,
10.95

Fourth Floor, Washington; Street Floor, Arlington



Skirtfuls of Fashion in Wonder-wash Cottons

Specially Purchased and Low Priced at Only

3.99

- Circulars
- Unpressed Pleats
- Light and Dark Colors
- Sizes 10 to 18
- Mail and Phone Orders Promptly Filled

Cotton skirts by the carload . . . and what cottons! These look lovelier after every washing. And wrinkle-resistant. And color-fast. They've a crisp, fresh finish that seems to resist soiling. The patterns they're printed in are enough to set your heart to singing. The styling is new, inspired, ties in wonderfully well with all the gay young tops you already have . . . and others you intend to buy! Hurry in for first choice . . . these are really special for the money!

Sportswear—Second Floor, Washington; Street Floor, Arlington



New Junior excitement!

Paris-inspired Tunic Costume

with a fashion-flare for lithe, young figures

14.98

The newest fashion of the entire Summer, born in Paris and interpreted in wonderful cotton right here in America! Slim black sheath, coolly sleeveless, colored in white . . . under a black and white tablecloth check tunic, also sleeveless and belted in patent. Sizes 7 to 15.

Junior Dresses, Second Floor, Washington and Arlington

ARLINGTON STORE OPEN TONIGHT TILL 9:30

Saturday Hours, Washington, 9:30 A.M. to 6 P.M.

Arlington, 10 A.M. to 6 P.M.

24-Hour Phone Order Service—DI. 7-7200