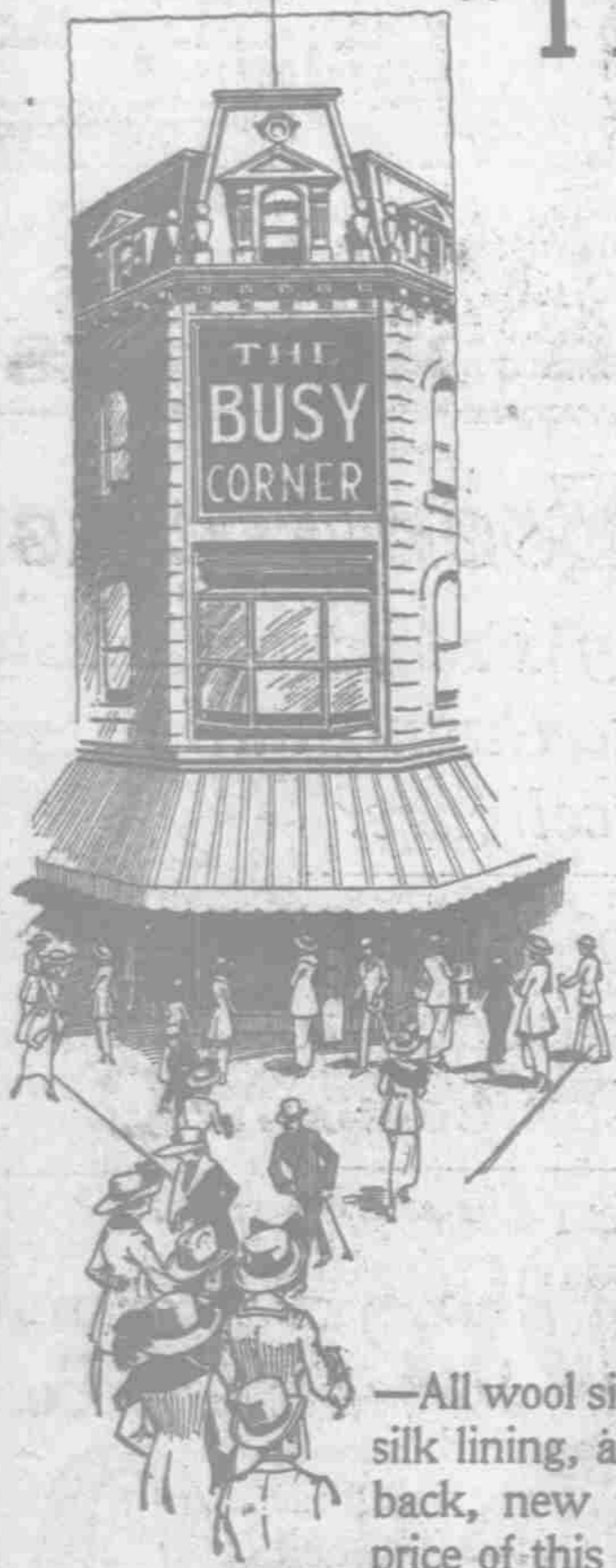


Open 9:15 A. M. **S. Kann Sons Co.** THE BUSY CORNER PENNA. MEAT & TH. ST. Victrolas and Sealed Victor Records, Fourth Floor. **S. Kann Sons Co.** THE BUSY CORNER PENNA. MEAT & TH. ST. October 5, 1919. Weather—Always Good at Kann's. **S. Kann Sons Co.** THE BUSY CORNER PENNA. MEAT & TH. ST. Close 6 P. M.

"The Busy Corner" Marks the Center of Shopping Activity

"The Busy Corner" is one way of saying S. KANN SONS CO. And S. KANN SONS CO. is another way of saying "The Busy Corner." Only the stranger within our midst would ask, "What makes KANN'S 'The Busy Corner?'"

Here's a Page of "What MAKES KANN'S 'The BUSY CORNER'"
And It Would Take This Whole Newspaper to Tell The Store's Entire Monday Shopping Story



COATS

THAT COMMAND ATTENTION
Because of Their Beautiful Quality

—HANDSOME COATS of all wool silvertone, very heavy quality, with fancy lining to match, with collar and cuffs of ringtail opossum. This is a belted style, at **\$98.50**

—All wool silvertone Coats, in a soft reindeer shade, with a fancy silk lining, and seal collar, has a narrow all around belt, yoke back, new pointed design made of cording of self material. The price of this is **\$59.75**

THE ILLUSTRATIONS WERE SKETCHED FROM THE COATS THEMSELVES.



Kann's—Second Floor.

A Special Sale of LINGERIE WAISTS

At the Street Floor Bargain Table

—A great many of these represent special purchases, some samples, and others from our own stock—old numbers from higher priced lines.

Values up to **\$3.00** —They are white volles, white batistes, embroidery trimmed models, others trimmed with heavy or fine laces; and plain colored volles, also colored striped waists. **AT \$1.69**

—There are not all sizes in all styles, but you will probably find your size in some style. Sizes range from 36 to 46 bust measure.

Attractive New Skirts

OF Taffeta, Plain Serge, and Plain Poplin

—Valued up to \$10.95 in Monday's Special offer at **\$5.29**

- Plain all-wool serges and plain silk poplins in the dark serviceable colors that make desirable skirts for business and street wear.
- The plain colors are in neat tailored effects, the poplins in more dressy effects.
- Velveteen skirts, a limited number only, in the season's favored styles, with belts, braid trimmed, and ornamented with large buttons. Special Monday at **\$8.95**
- Another odd lot of skirts in striped silk, good Fall models, values to \$5.95. Monday at **\$2.98**

Kann's—Second Floor.

HOSIERY and KNIT UNDERWEAR Needs Supplied Underprice Monday

—Three specials in hosiery, and the same in knit underwear on which to save money.

IN HOSIERY—

- Children's Socks, mercerized, white with fancy striped tops, regular made, turn over tops, all sizes 5 to 9½ inches. Regularly 35c. Special, a pair **25c**
- Children's Ribbed Hose, in three different weights, heavy, medium, and light weight, in black, white, and Cordovan, in sizes 6 to 14 inches. Special Monday—three pairs for **\$1.00**, or a pair at **35c**
- Infants' White Cashmere Hose, 1 and 1 ribbed, with silk heels and toes, in sizes 4 to 6½ inches; special a pair **39c**

Kann's—Street Floor.

IN KNIT UNDERWEAR—

- Women's "Cumfy-Cut" Vests, fine ribbed, low neck, and no sleeve styles, "seconds" of the 25c quality. Special Monday at **10c**
- Women's Fine Ribbed Vests, in white and pink, in low neck, no sleeve styles, also in square neck, "V" neck, and "Cumfy-Cut" styles, taped neck and arms. 25c and 35c values. Choice each **19c**
- Women's Union Suits, fine ribbed, low neck, no sleeves styles, and tight knees; also low neck, no sleeves, loose knees, lace trimmed, all tailored models. Regularly 50c 75c, special choice at **50c**

Wool Scarfs, Ostrich Feather and PULSH NECKPIECES Every One A Special For Monday

—The wool scarfs represent a special purchase. But we could secure only a limited number. They are of brushed angora wool, sailor back styles, the back is finished with fringe, also the ends of the scarf. This fastens with large buttons and cord. The colors are tan, taupe, navy and black.

—These were made to retail at \$10.00 each, but because we bought them at a special price we offer them to you—**Monday \$6.50 At . . .**

—OSTRICH FEATHER NECKPIECES, in white and black, black and white, all black, and navy blue. A very good value at our regular price of \$3.98 each. Special Monday, **\$3.00** each

—SHORT PULSH STOLEs, all man tailored; with satin tie fastenings. Regularly \$6.50. Monday **\$5.35** at . . .

Kann's—Neckwear Store—Street Floor.

This Coupon **\$1.15** and For Seamless Aluminum Rice Boiler



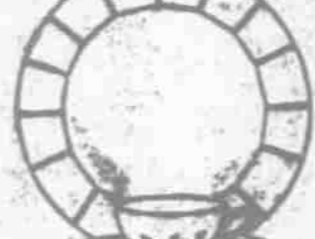
—14-qt. size. (None sold without coupon.) (T) Kann's—Third Floor.

This Coupon **69c** and For This Household Combination



—Consisting of 10-qt. galvanized water pail, 5 cakes Gohlin soap and one good quality scrubbing brush. (None sold without coupon.) (T) Kann's—Third Floor.

This Coupon **\$1.39** and For 18-Pc. Breakfast Set of White Porcelain



—Consists of 6 breakfast plates, 4 cups and 4 saucers. Slightly imperfect. (None sold without coupon.) (T) Kann's—Third Floor.

This Coupon **\$5.69** and For 42-Pc. Blue Bird Cottage Dinner Set



—Very good quality porcelain. (None sold without coupon.) (T) Kann's—Third Floor.

This Coupon **\$8.98** and For Chest of Betsy Ross Silverware



—28 pieces, fitted in a neatly lined chest. This price does not include war tax. (None sold without coupon.) (T) Kann's—Third Floor.

This Coupon **39c** and For 6 Rolls High Grade Toilet Paper



—Jet fiber tissue; our well known Urban quality. (None sold without coupon.) (T) Kann's—Third Floor.

This Coupon **49c** and For Garbage Can



—Made of black sheet metal; regular household size. (None sold without coupon.) (T) Kann's—Third Floor.

This Coupon **33c** and For 12 Colonial Glass Tumblers



(None sold without coupon.) (T) Kann's—Third Floor.

WE COULD NOT BUY THESE PHONOGRAPHS OFFERED YOU MONDAY AT **\$9.95**

To sell at less than \$16.50 if we had to buy them now at the present market prices.

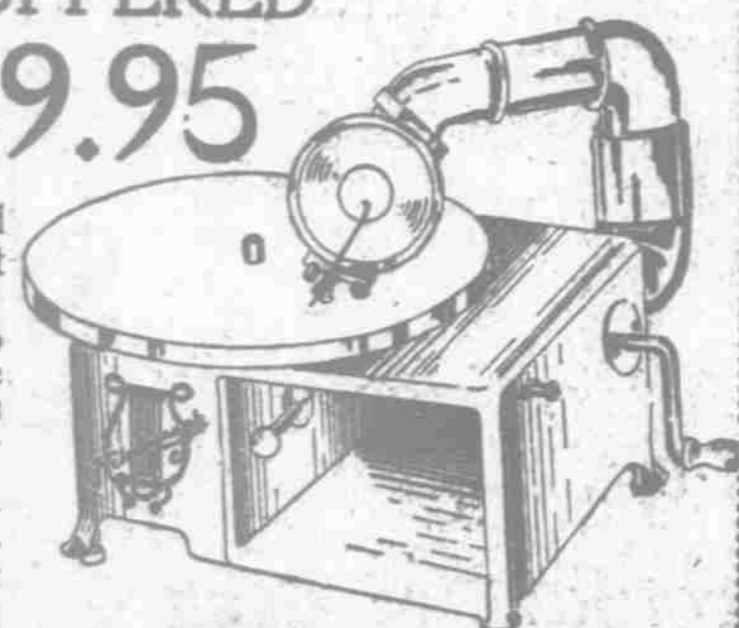
—Just because we were lucky enough to have secured a lot of them early we are going to share our good luck with you tomorrow to the extent of 100 phonographs.

—These are the wonderful little "Melodographs" which have created a real sensation every time they have been offered at this special price.

Play Nearly All Types of Disc Records, Both 10 and 12 Inch Sizes

—Small and compact, take up very little room, and are attractive in appearance. —Made entirely of metal; case is 8½x9 inches, finished in mahogany color. Felt covered, nickel trimmed turntable, special arm, has sound box and speed regulator.

Kann's Toyland—Fourth Floor.



A NEW LOT OF HOUSE DRESSES AND A NUMBER OF SPECIALS FROM OUR OWN STOCK. **\$2.95**

Values to \$4.00, Monday at **2.95**

—Among these are a number of very attractive styles in volles, that are smart enough for street wear; in fact the majority of these styles will be suitable for afternoon as well as morning wear.

—They include dresses of striped and plaid gingham, dark percales, light striped and checked percales, checked gingham, some trimmed with embroidery collars, others with white collars, and still others in contrasting colors.

—Good assortment of sizes in the lot.

Kann's—Second Floor.

SAVE ON GYMNASIUM BLOOMERS



—Girls' full cut pleated gymnasium bloomers, made of heavy black sateen with elastic knee, elastic waist and patented Governor fastener for extra adjustment. Sizes 12 to 20 years. Special **\$1.75**

—Middy Blouses made of Lonsdale jean. Broken assortment of styles and sizes with navy or red collars. Not all sizes in each style but sizes 12 to 22 years in the lot. Special Monday **\$1.35**

Kann's—Girls' Store, Second Floor.

Comfortable Garments For Chilly Nights

Ready Monday At Our Girls' Store

—Brighton Carlsbad Sleeping Garments are comfortable and made to stand wear and tub.

—Children's Gowns made of soft flannelette, in pink or blue stripes, collarless style with double yoke back and **\$1.50** front, at . . .

—Children's Sleeping Garments of heavy outing flannel, made with hood, foot pocket and attached mitts, **\$2.75** at . . .

—Misses' Pajama One-piece Sleeping Garments of fine, soft outing flannel, with silk frogs in front **\$2.98** at . . .

Kann's—Second Floor.