

Saks & Company

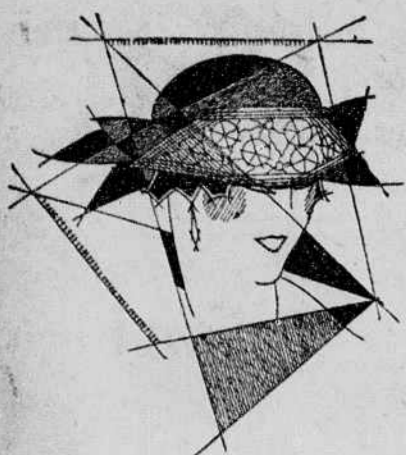
Specialists in Apparel, Broadway at 34th Street

Saks & Company

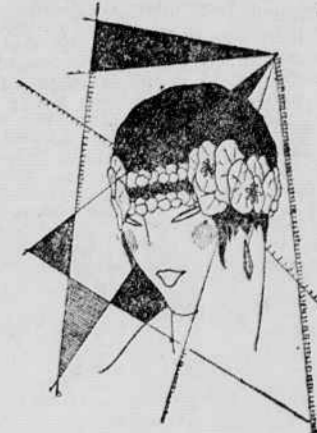
New Lights on the New Modes for Winter

As Originated by Paris and Presented by Saks & Company

All is Change is the motto of Fashion. Particularly this Fall, when suits take to blouses and draped skirts, while frocks do startling things at the neckline, and even our shoes turn from staid black to brilliant red! We show below a few of the most important changes made by the hand of Paris.



That becoming duo, black-and-silver, is used to carry out the lines of this new turban hat — \$25
Third Floor



A head-dress by night is now as necessary as a hat by day! A newly arrived Paris head-dress of metallic leaves and flowers—various styles, \$2.50 to \$18.50 Street Floor

New Dance Frocks are Almost Tripping Length!

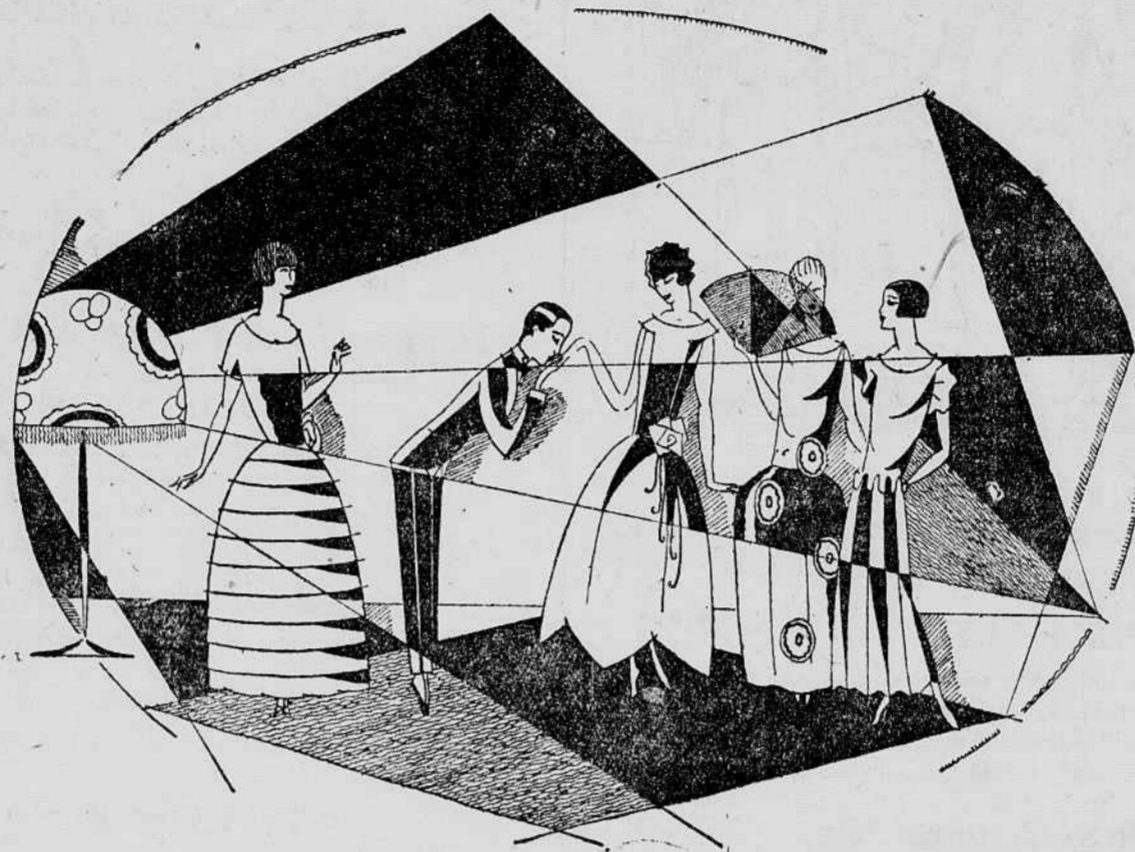
Now they are here we realize the long skirted frocks are the prettiest!

Take a scarlet taffeta dance frock (first figure at the right) with ruffled skirt full enough to billow at the ankles. The plain waist has silk flowers for ornament. . . . 35.00

A gold velvet frock has a full skirt shirred to a basque blouse. But its real distinction lies in the beautifully curved neckline, cut to fall over the shoulders, and its trimmings of Ermine fur. . . . 59.50

The important metallic note appears in a silver-blue frock, fashionably plain except for medallions of blue velvet and silver on the skirt. . . . 55.00

Changeable satin appears again in a brilliant cerise satin frock of circular skirt and puffing at the waist. A rhinestone buckle decorates the front. . . . 45.00
Second Floor



It's the short-sighted maiden who has not discovered the charm of the long-skirted frock

If It's a New Suit The Collar Says So

Even in this season of startling changes to blouse jackets and draped skirts in Winter suits, it's the collar that stands out—literally as well as figuratively.

Lanvin collar is a double collar, lined on the inside with fur. It comes on a new suit with a saddle silhouette, flat in back but extended at the hips. In high shades such as genoise, Hawaiian, and blue. . . . 65.00

The Half-Moon collar is a crescent-shaped fur collar cleverly cut so as to frame the face, and keep the neck warm. It is used on a black arabella suit with the large new Paris cuffs of beaver to match. . . . 98.50

The Cardinal collar is cut circularly so as to stand up but extended about the neck. Attractively made of beaver for matching a suit of arabella. . . . 79.50
Fourth Floor

Fall Lingerie

With New Lines

French gowns. Like most gowns of today, the sleeves of this batiste model are conspicuous by their absence. The new long arm hole, and the front of the gown are beautifully embroidered.

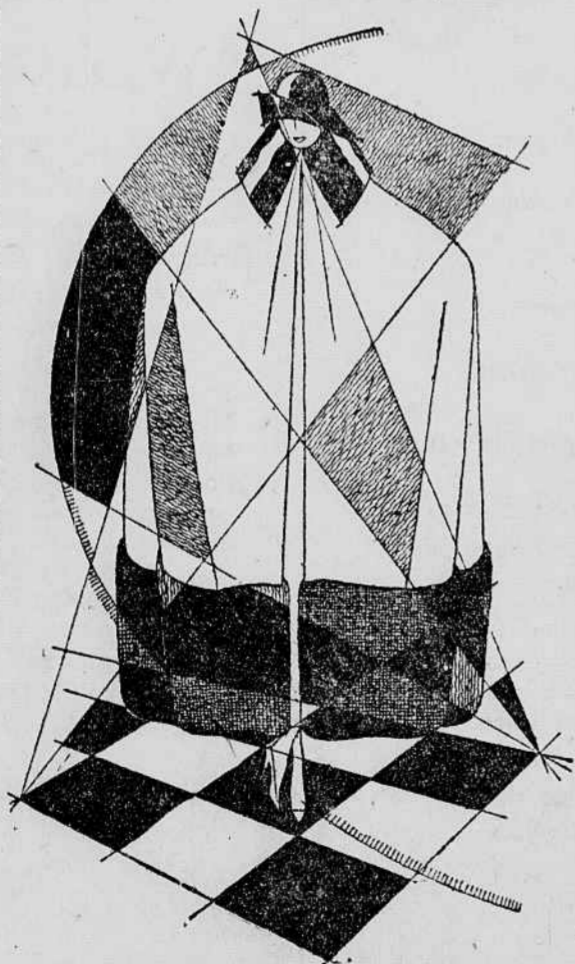
Special . . . 3.95

A radium silk gown with wide silk shoulder straps, and band of real filet insertion, special . . . 5.95

New costume slip. Like this year's frocks, it has a long waist, with skirt gathered full at the back. Of satin sequa, a rich soft satin material. In black, brown, navy. . . . 6.95

Rows of hemstitching and a plaited ruffle trim a new radium silk petticoat. Special . . . 3.95
Third Floor

Women's Coats Adopt a Vast Amount of Fur



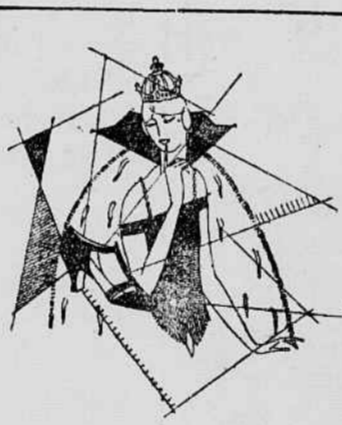
The sketch (above) shows how capes have grown in length and, accordingly, in smartness. And the newest capes turn to fur bands at the cape hems. Black fashona trimmed with black caracul. 85.00. Fourth Floor

Coats are queenly garments this season, with their rich materials luxuriously draped, and trimmed with an unusual amount of fur.

A fur blouse is the striking feature of a new black gerona coat, with new up-standing collar of fur and sleeves of the material . . . 165.00

The Cape effect at its newest and best is seen in a coat of silk duvetyne. The cape at the back makes the sleeves and is broadly banded with squirrel. . . . 275.00

Embroidered sleeves in kit fox shade to match the coat, feature a third model. Trimmed in kit fox fur . . . 185.00



Red Slippers

From the moment that the fashionable Queen Victoria, wife of Manuel of Portugal, ordered red velvet slippers they became the darlings of Paris.

They're worn to match red gowns, or, more popularly, to serve as brilliant contrast to a white frock or one of contrasting color.

Red velvet slippers in the sandaled Circe model sketched above . . . 10.50

Red kid Colonial pumps, which can be worn for street, for afternoon wear or for evening. . . . 10.50
Second Floor

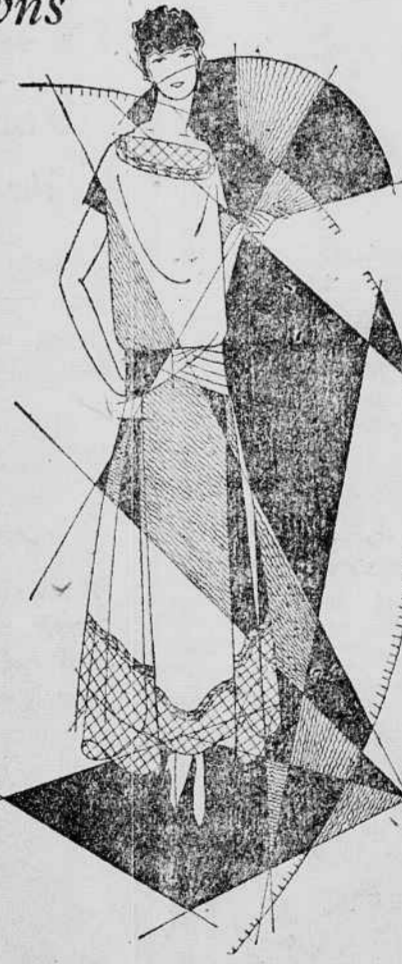
Presenting Paris Models in Women's Gowns

One gets the benefit of original French creations at American prices, in the new copies of French models which the Women's Department shows.

A Worth model shows a regal draped gown of black georgette, with exquisite bits of pearl, jade and silver beading at one shoulder and belt. . . . 150.00

An original Agnes model introduces the new long sleeves, which is elaborately embroidered and beaded in the new Egyptian colors. Of black morocain . . . 150.00

The Miller Soeurs model shows an attractive nasturtium orange georgette, trimmed on the bodice and skirt with groups of velvet leaves of the same shade . . . 69.75



The aristocrat of all Paris frocks is a Renee model of black Georgette, strikingly trimmed with black net. An important feature is the shallow net yoke in front, but a deep yoke reaching to waist in the back. 150.00. Fourth Floor

The Matelasse

and Other New Negligees

Now that Paris has taught us about the satin-stitched material known as matelasse, negligees adopt it as their own.

A clever new matelasse negligee banded in plain satin comes at an unusual price. . . . 29.75

A robe that is fit for a princess is a matelasse slip-on model. It is stitched in contrasting color, which matches the following georgette sleeves . . . 59.50

For warmth, we recommend a new flannel robe, with monk sleeves. It is trimmed with white bands, embroidered with blue flannel to match the robe. In all shades . . . 19.75
Third Floor

Brown Wraps with Caracul, in Capecoat Lines for Misses

The fashionable miss turns naturally to brown trimmed with black fur for Winter. And the new cape-coat effect is seen at its best in a brown marvella wrap with deep cape that falls to the hem. Banded with black caracul . . . 145.00

The new box coats sponsored by Paris are especially becoming to misses and little women. These are finished at the hips with a broad band which fastens snugly. In black broadtail cloth, banded with skunk . . . 79.50

The popular blouse effect is found on an interesting coat of black marvella which uses narrow bands of black caracul on its sleeves and collar. The three bands of caracul on the skirt of the coat are a new feature . . . 145.00

Jewelry Which Proves It's the Little Things That Count

Bracelets

The well-dressed arm always wears at least three. Carved jet bracelets, . . . 8.50

Snake bracelets with marcasite heads, . . . 12.50

Jet Combs

For these days of tight hair and elaborate headresses we suggest this magnificent comb of real jet, in lacy pattern. . . . 26.50
Street Floor

Earrings

It's as necessary that earrings be long as frocks. But that is only one of the requisites of this charming pearl and rhinestone pair. . . . 14.50

Crystal

The exceeding smartness of crystal jewelry has set us all crystal gazing. A crystal and jet black necklace . . . 12.50
A bracelet to match, . . . 5.00

Wrist-Watch

A decoration at the same time it is a necessity. Set with diamonds and sapphires in platinum. . . . 185.00

