



NAVAL SALUTE—Lt. Gen. and Mrs. Ralph Canine are greeted by Rear Admiral Carl Espe and the Chief of Naval Operations Arleigh Burke on the right, at the party honoring Admiral and Mrs. Burke yesterday at the Bethesda Naval Officers' Club.—Star Staff Photo.

THE SERVICE SCENE

Burkes Meet Foreign Naval, Air Attaches

By RUTH DEAN

There was probably enough gold braid to go around several city blocks at the reception given last night by the Director of Naval Intelligence and Mrs. Carl F. Espe in honor of the Chief of Naval Operations and Mrs. Arleigh Burke.

Besides flag officers of our own Navy, the majority of the guests were naval and air attaches accredited to the Department of the Navy. It was to introduce the foreign military personnel to Admiral and Mrs. Burke that the party was given in the Officers' Club of the National Naval Medical Center.

In the receiving line with the hosts and honor guests were Rear Admiral R. W. Cavenagh, deputy director of naval intelligence, and Mrs. Cavenagh.

Ambassadors Come Early

Several ambassadors and their wives also attended the party, including the Netherlands Ambassador and Mrs. Van Roijen, the Ambassador from the Union of South Africa and Mrs. Holloway, who had to leave early to host their own dinner party; the Brazilian Ambassador and Mrs. Muniz, who had to do likewise; the Korean Ambassador and Mrs. Yang, Mrs. Koo, wife of the Chinese Ambassador, and Mrs. Barrington, wife of the retiring Burmese Ambassador. Other early arrivals at the party were the assistant Marine Corps Commandant, Lt. Gen. Randolph C. Pate and Mrs. Pate, and Lt. Gen. C. P. Cabell, deputy director of the Central Intelligence Agency, who had just seen Mrs. Cabell off on a plane for Europe where she'll spend a month vacationing.

Visiting Here

The director of CIA, Allen W. Dulles, arrived at the party a little later wearing a dinner jacket. He was seen talking with Mrs. Charles S. Thomas, who arrived with the Thomases' daughter, Mrs. Frank Alexander from Los Angeles, who, with her two daughters is visiting here. The Secretary could not come, Mrs. Thomas explained, because he was confined at home with a severe cold and was trying to save his strength for a speaking engagement today in Jacksonville, Fla.

In another group, the Netherlands Naval Attaché, Rear Admiral G. Koudijs, was talking with the Norwegian Naval Attaché, Rear Admiral Skule V. Storheill, and British-born Mrs. Storheill. Admiral Koudijs said he and the other naval attaches stationed in Washington held their annual outing in Annapolis on Wednesday and enjoyed the day as guests of the Naval Academy's superintendent.

Old Friends Meet

The commandant of the Potomac River Naval Command, Rear Admiral L. S. Sabin, and Mrs. Sabin were saying hello again to the Korean Naval Attaché, Capt. Kyu Sup Chung, whom they hadn't seen since Tokyo days when both Admiral Sabin and Capt. Chung were serving in the Far East Command.

The party was the occasion

PLAN OUTSTANDING SOCIAL MEETINGS

7 private rooms large and small
BUSINESS—WEDDINGS
RECEPTIONS—ANNIVERSARIES
Call Mr. Williams
Columbia 5-4000

BURLINGTON HOTEL
WASHINGTON, D. C.

Alumnae To Celebrate Anniversary

Washington area alumnae of Wilson College, Chambersburg, Pa., will join in celebrating their alma mater's 85th anniversary with a birthday dinner tonight in the Kennedy-Warren Hotel ballroom.

Guest speaker for the event will be Dr. Paul Swain Havens, college president, who will discuss the institution's "Ten Year Plan" for the future.

Miss Anne Brierly is president of the Washington Wilson Club, and Mrs. Carl Heath Kopf is general chairman of the dinner. Assisting the latter will be Mrs. John Forrester, Miss Frances Fox, Mrs. Alan M. Kreshner, Mrs. David Scott, Mrs. Norman Tucker and Mrs. John H. Wanner.

Guests of honor will be the Misses Mary and Elizabeth Wightman, daughters of the late Dr. James Wightman, a cofounder of Wilson College, and its first president.

Rummage Sale

The Junior chapter of Army Daughters is holding a rummage sale today and tomorrow from 9 a.m. to 8 p.m. at 1644 Connecticut avenue N.W. Proceeds from the sale will be used for charitable projects.

In New York

Mr. and Mrs. William C. Foster and Mr. and Mrs. E. Propper de Callejon are among the guests staying at the Ambassador Hotel in New York.

Open a Model Shop Charge Account

CHIC CLUTCH COAT . . .
created by Montague

A beautifully-fashioned coat of imported Zibeline, woven in France. Exciting detail includes the large pin-studded collar, the push-up sleeves. Navy, black, gray.

\$59.95

model shop
1303 F STREET

Free Parking

Daughters to Meet

The District Society of Daughters of Colonial Wars will hold their first meeting of

the season at 2 o'clock Monday in the Chapter House, 1732 Massachusetts avenue N.W. Lt. Comdr. Mendel L. Peterson, USNR, will be the speaker.

Benefit Party

The League of Service, the business and professional group of Westmoreland Congregational Church, will hold

a benefit game party at 8 o'clock tomorrow in the Woodward & Lothrop auditorium, Wisconsin avenue and the District line.

OCTOBER EVENTS

CHILDREN'S SCHOOL SHOES

20% off
regularly 5.95 **4.69**

Thrifty shopping for boys' and girls' shoes is easy-as-ABC! A group of our best-selling GRO-NUPS are reduced 20% . . . each made to Hahn's high standards with sturdy lasts and Goodyear welts. Sizes 8½ to 3.



Raised seam mocasin toe oxford, BROWN.



Double-strap sandal with stitching, BROWN or RED.



Stitched U-tip like Dad's, BROWN crushed leather.



Two-tone BROWN saddle with cushion crepe sole.



Scuffproof tip, five-eyelet oxford in BROWN.

Children's Shoes at all stores except 14th & G

H A H N

1207 F 7th & K
*3113 14th *4483 CONN. *SILVER SPRING, MD. *Open 9:30 to 9 daily
ALEXANDRIA, VA. Open 9:30 to 9 Thurs., Fri.
CLARENDON, VA. Open 9:30 to 9 Mon., Thurs., Fri.

ANNUAL SALE!

HUMMING BIRD
New
Fall Nylons

Sheer Accent Seams & Daytime Sheers, reg. 1.35 **1.15**
3 pairs 3.35

60-Gauge Dress Sheer & Contrast Heels, reg. 1.50 **1.25**
3 pairs 3.65

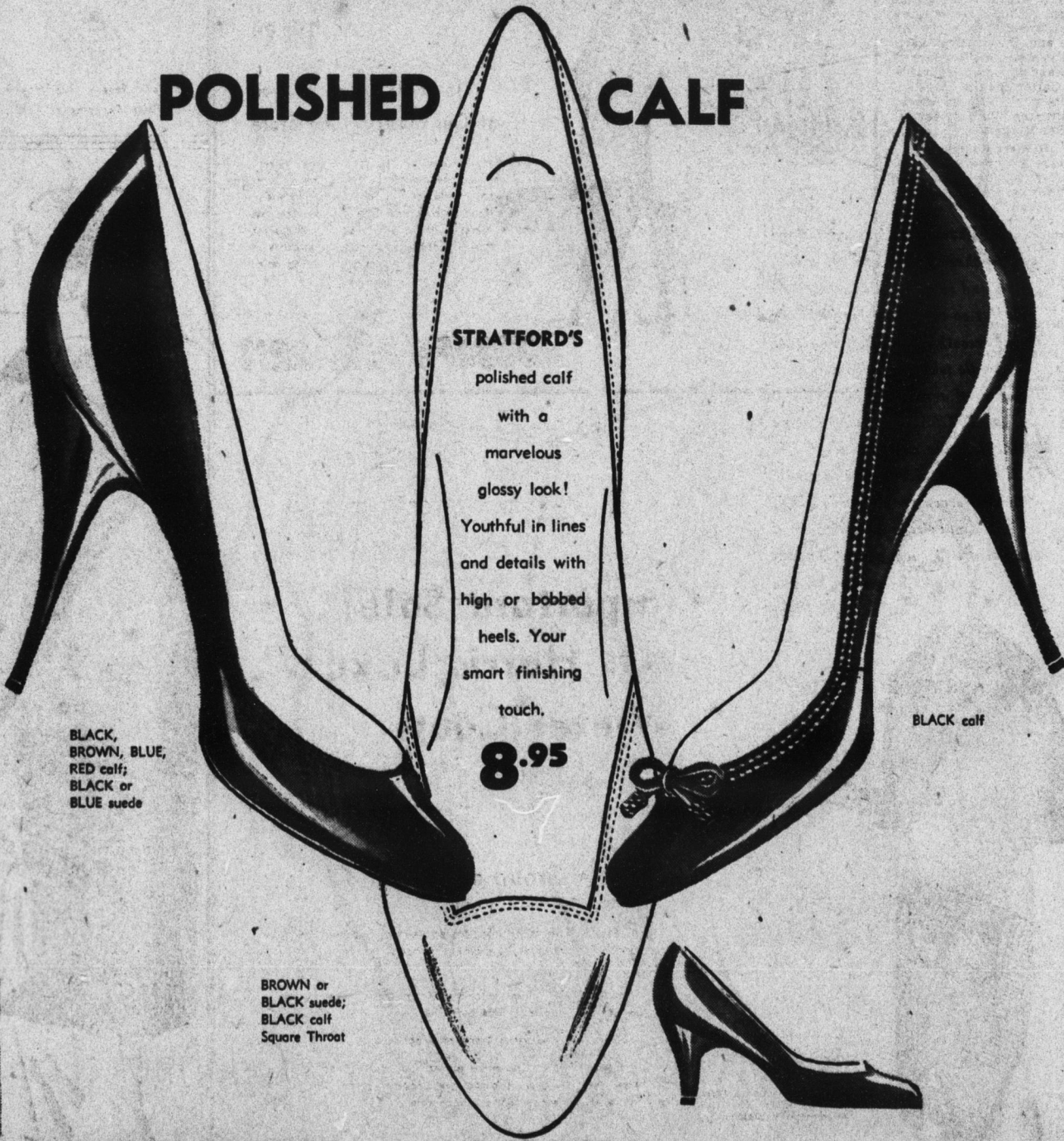
Sheer & Knee-Length Stretch, 1.25
reg. 1.50 3 pairs 3.65

Wear Stretch, reg. 1.65 **1.40**
3 pairs 4.00

AT ALL HAHN STORES

H A H N

POLISHED CALF



STRATFORD'S

polished calf with a marvelous glossy look! Youthful in lines and details with high or bobbed heels. Your smart finishing touch.

8.95

BLACK, BROWN, BLUE, RED calf; BLACK or BLUE suede

BLACK calf

BROWN or BLACK suede; BLACK calf Square Toes

1207 F 7th & K
*3113 14th *4483 CONN. *SILVER SPRING, MD. *Open 9:30 to 9 daily
ALEXANDRIA, VA. Open 9:30 to 9 Thurs., Fri.
CLARENDON, VA. Open 9:30 to 9 Mon., Thurs., Fri.