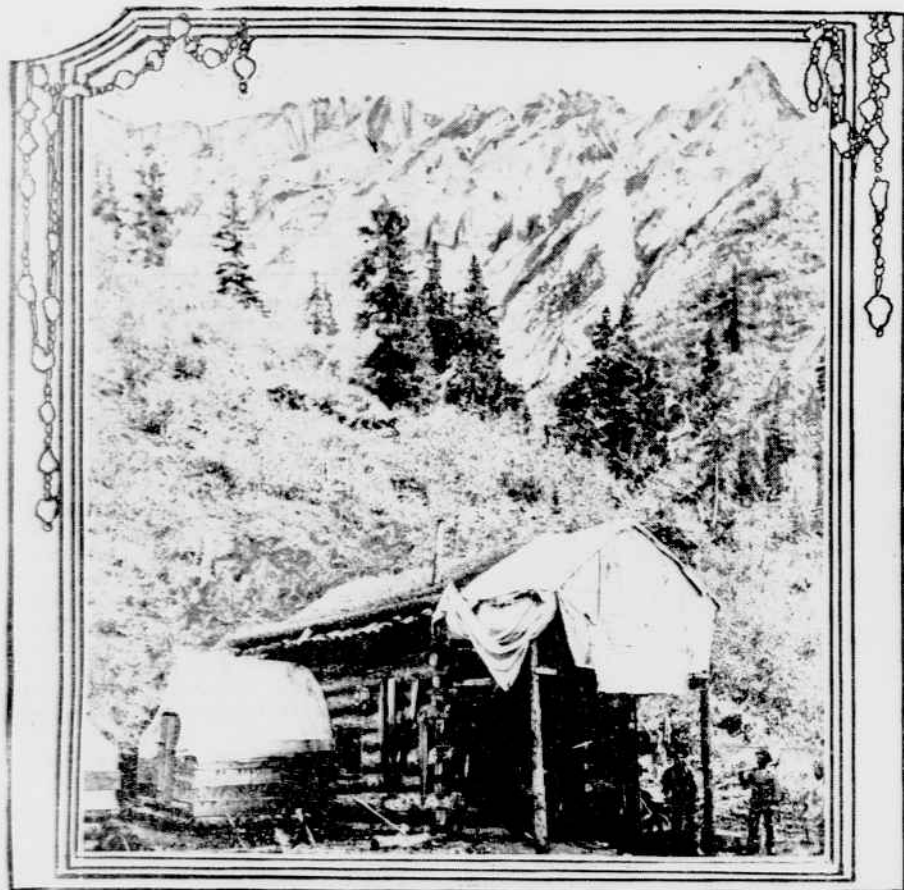


## THREE MILLION ACRES IN ALASKA SOON TO BE OPENED TO SETTLERS

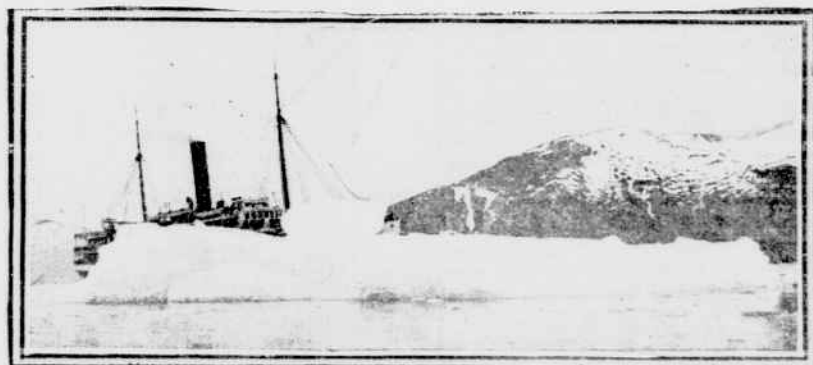
Scenes of this rapidly developing section of the Far North, where railroad building is being pushed with great energy and settlers are steadily increasing in number.



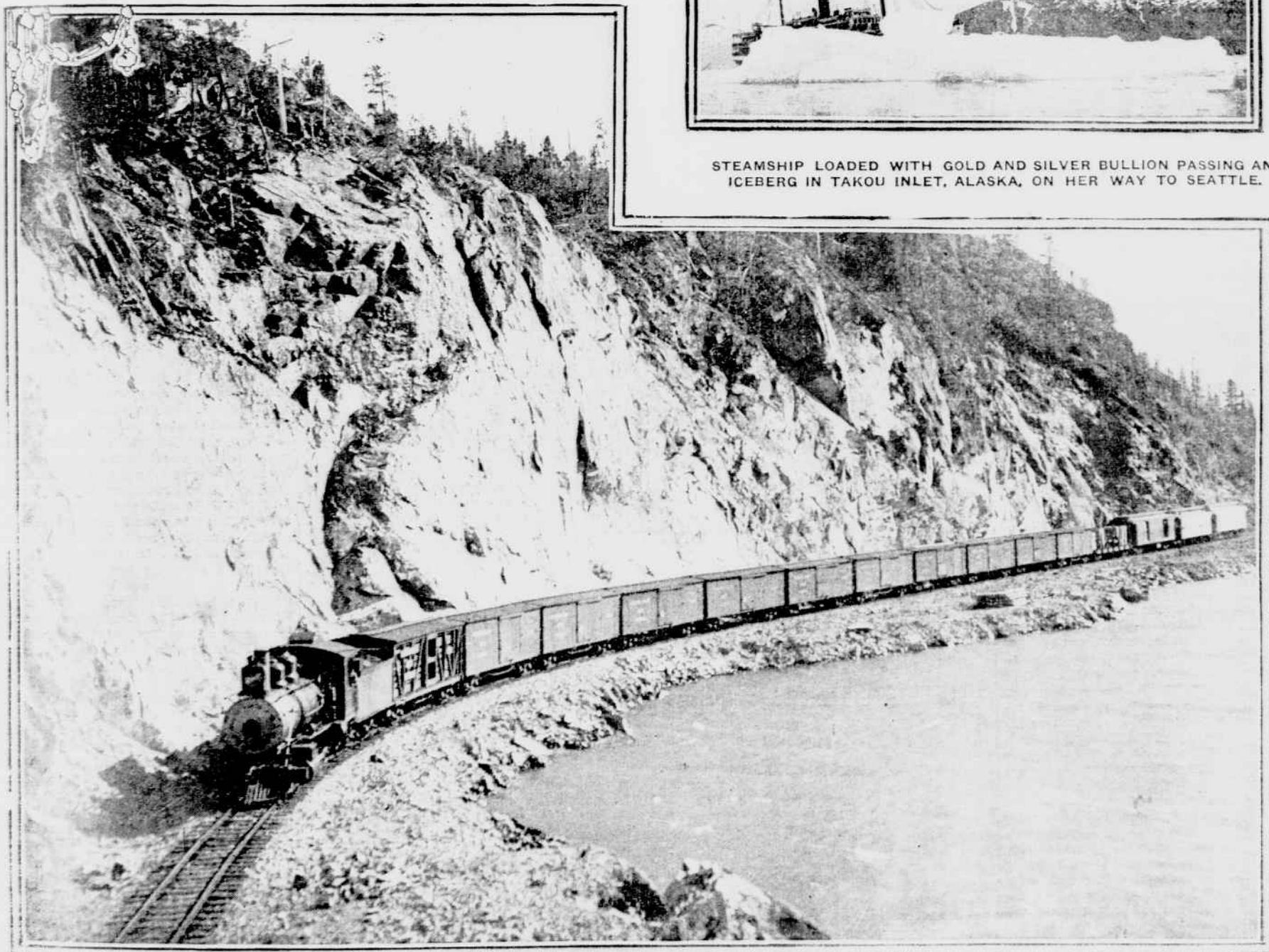
A MINER'S CABIN IN THE BULLION DISTRICT OF ALASKA.



ALASKAN ESQUIMAU MASK.  
Used by Shamen on festival occasions to appease or drive away evil spirits.



STEAMSHIP LOADED WITH GOLD AND SILVER BULLION PASSING AN ICEBERG IN TAKOU INLET, ALASKA, ON HER WAY TO SEATTLE.



A WHITE PASS & YUKON RAILWAY ACCOMMODATION TRAIN SKIRTING LAKE BENNETT.