

# UWANTA

Pair of Fine  
Opera  
Glasses  
For the Coming  
OPERA  
SEASON.

## Our Stock

Contains exactly what you want—made by the famous "Le Maire" of Paris.

Prices From  
**\$7.50 to \$50.**

Enough for everyone.

**H. F. WICHMAN,**  
FORT STREET.

## Real Estate For Sale.

DELIGHTFUL HOME WITH MODERN appliances on WAIKIKI BEACH ROAD; healthy location; fine view, well improved; elevated grounds; large barn and carriage house; in easy reach of tramcar.

Apply at  
**P. E. R. STRAUGH,**  
REAL ESTATE BROKER.  
Corner Bethel and King Streets.

**F. W. MAKINNEY,**  
SEACHER OF RECORDS.  
Office: Opposite W. G. IRWIN & CO.

ABSTRACTS AND CERTIFICATES OF TITLE CAREFULLY PREPARED.  
  
MONEY TO LOAN ON REAL ESTATE SECURITY.

**American Messenger Service.**  
MASONIC TEMPLE.  
Cor. Hotel and Alakea Streets. Telephone 444.  
OPEN ALL NIGHT.

**Souvenir Jewelry**  
—AT—  
**BIART'S** 404½ FORT ST. JEWELER.

New Bill at the Orpheum Tonight.

## A Good Thing

To know about your food is it's purity. No one can afford to overlook this important thing in beverage. People who know, say that women and children can use—and be sure of it's absolutely purity—mild and delicious

## RAINIER BEER

It's ideal for home use—a trial convinces.

## An Opportunity To Purchase a MARINE VIEW COTTAGE

**FOR SALE!**  
THAT COSY COTTAGE AND LOT on Thurston avenue, adjoining the new residence of Hon. H. C. Austin and adjacent to the new palatial residence of Hon. W. G. Ashley and upon the heights controlling an unobstructed panoramic view of the ocean. Size of lot 85x200, from street to street. Must be seen to be appreciated.

For further particulars apply to  
**Will E. Fisher,**  
Real Estate Agent and Auctioneer.  
Corner Fort and Merchant Sts.

## 28-LOTS-28

At Kapalama For Sale.

SITUATED ON MAUKA SIDE OF King street, near the Hawaiian Tramway Co.'s depot; the location is one of the best, if not the best, in the city of Honolulu.

Terms are very reasonable.  
  
For further particulars apply to  
**W. C. ACHI & CO.,**  
July 20, 1899. 5290

## Hawaii Land Co. LIMITED.

Capital Stock **\$50,000.**  
Capital paid up **\$29,070.**

OFFICERS.  
W. C. Achi ..... President & Manager  
J. K. Kahookano ..... Vice President  
J. Makainai ..... Treasurer  
E. Johnson ..... Secretary  
Geo. L. Desha ..... Auditor

BOARD OF DIRECTORS.  
J. K. Kahookano.  
J. Makainai.  
J. W. Bipikane.

The above Company will buy, lease, or sell lands in all parts of the Hawaiian Islands; and also has houses in the City of Honolulu for rent.

## Just Here!

**Aloha Collection**  
—OF—  
**Hawaiian Songs**

Many new ones, never before published, and the best of the old ones.  
  
40 SONGS IN ALL.  
**BEST HAWAIIAN SOUVENIR**  
—THE—  
**Bergstrom Music Co.,**  
SOLE AGENTS.

## A PRIZE DRILL

Between National Guard of Hawaii Companies.

Tuesday, November 7th, is the Day  
Set—First and Second Best to Receive Money.

An order has just been issued at the headquarters of the First Regiment, N.G.H., specifying the following exercises for the competitive drill between the companies, which is to take place Tuesday, November 7:

To form the company; fall in; alignment; rests; facings; open ranks; inspection of arms; close ranks; complete manual of arms, as adopted by the regiment; loading and firing; turn and halt; turn and advance; being in line, march by the flank; being in line, form column of fours and halt; being in line, march in column of fours to the front; oblique in column of fours and resume the direct march on right (or left) into line; right (or left) front into line; pass obstacles; being in column of fours, form column of twos or files; being in column of twos or files, form column of fours; being in line, form platoons right or left; being in line, form platoons to the front; being in platoons, form company to the front.

Extended order of drill: Being in column of fours, form line of squads to the front; being in line of squads, deploy as skirmishers; rally by squads and platoon; assemble; being in column of fours, form into squads to the right or left; deploy; lie down, fire three volleys; rally by squads and platoon; assemble; being in line, deploy as skirmishers or counter-squad; change direction to right or left; advance by rushes; rapid firing; to the charge; charge.

The bearing of the soldiers, steadiness, silence in the ranks, and maintenance of correct distances will also be considered part of the drill.  
Prizes of \$100 and \$50 will be awarded to the first and second best-drilled companies respectively.

## BUGS IN THE LIQUOR.

"A certain promoter, who is now in Cuba," said a New Orleans sugar man, "was the victim not a great while ago of what he describes as the most contemptible outrage ever perpetrated upon a gentleman in Louisiana. The outrage occurred in my private office, and I blush to say that I was an accessory before the act. You see, this promoter had been making himself very free with the premises, and liked especially to drop into our back office, where there was always a bottle of good rye on the sideboard. At first he only 'joined us' on invitation, but finally he glided into the habit of helping himself whenever he happened in, which averaged about twice a day. One afternoon my partner, Billy, was in a confectionery store and happened to see a lot of candy made in the shape of fantastic bugs, beetles and lizards. It at once occurred to him that there was a chance to entertain our unbidden guest, so he bought a dime's worth of the things and brought them to the office, where he waited patiently until he heard the promoter's voice in the outer room, and then emptied the collection in the bottle of rye. As usual, he proceeded to help himself to a nip, and was smacking his lips when Billy wheeled suddenly around at his desk. 'You didn't drink anything out of that bottle, did you?' he demanded sharply. 'Why—er—yes,' said the promoter, looking startled. 'Why?' 'Good heavens!' yelled Billy. 'I was using that to preserve a lot of bugs and lizards from Guatemala! The night whiskey is in the cabinet.' Our friend grabbed up the bottle, and held it to the light, and there, sure enough, was a four inch stratum of horrible looking blue and yellow monsters, all tangled up together. 'Oh, Lord!' he gurgled, turning ashy. 'I thought it tasted queer! I'm poisoned sure!' With that he shot out of the office. We intended to tell him it was only a joke, but he got away too quick, and about an hour later we received a visit from a doctor who wanted to know exactly what kind of bugs were in the bottle. He said Colonel—was a very sick man. We put him on and he went away snickering. That was the last we saw of the Colonel, but he swears he will have our gore if he ever catches us outside of New Orleans."—New Orleans Times-Democrat.

**FAIR PROPOSITION.**  
"Are you able to support my daughter?" asked the old gentleman. "You know, she has pretty expensive tastes, and I don't mind saying that the burden has been pretty hard for me at times."  
"That's just the point," exclaimed the prospective benedict. "If I marry her we can divide the expense."—Chicago Post.

The students of Oahu College and Punahou Preparatory School will go to Kahuku tomorrow morning, returning same day.

# BASEBALL TRACT.

Bounded by Keeaumoku, Kinau, Piikoi and Lunalilo Streets. Only one block from the Beretania Street car line.

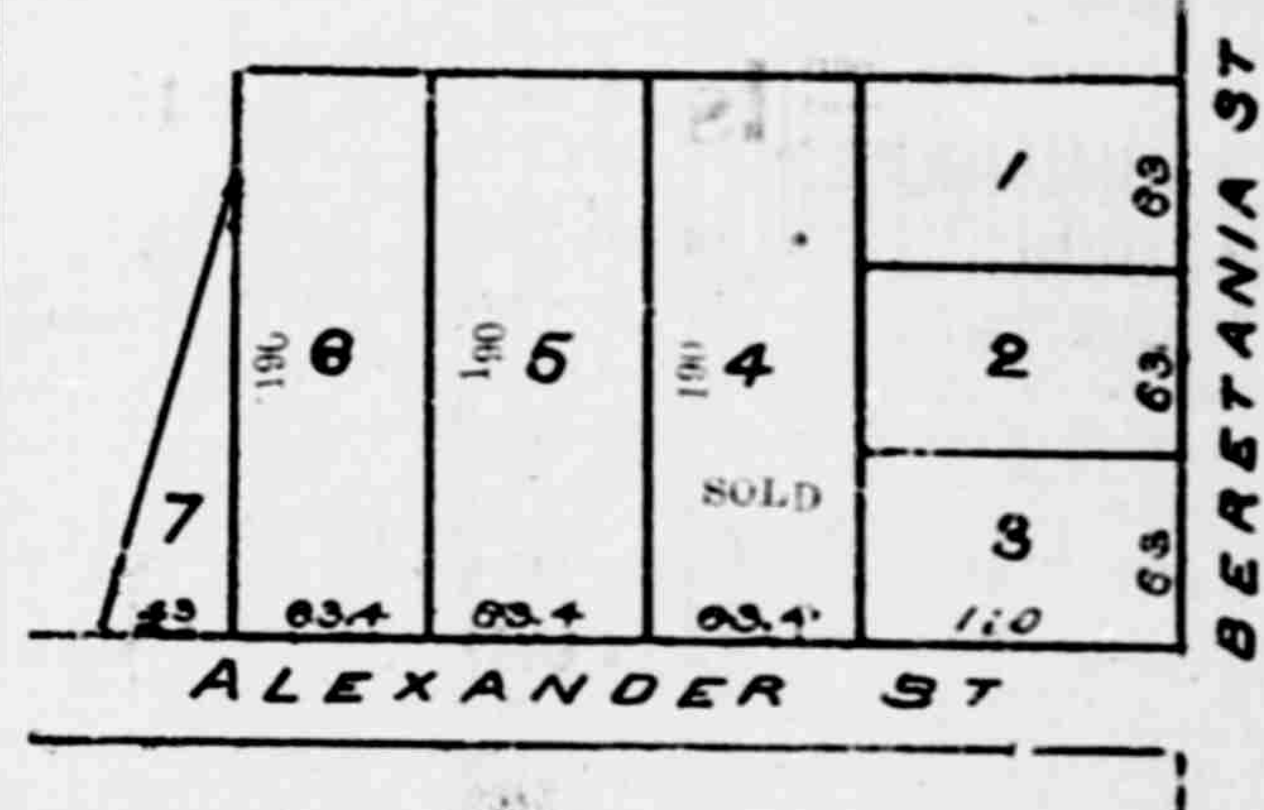
This Tract is situated in one of the finest residence portions of Honolulu, and in a direct line with the cooling breezes of Makiki.

Lots 50x90 feet will be sold for the reasonable price of \$1,250. Terms, \$250 cash; balance on installments, payments to suit purchaser.

This land has a very gentle slope, and purchasers can immediately commence building operations. Early purchasers can Secure Choice Locations.

For further particulars apply to  
**Gear, Lansing & Co.,**  
JUDD BUILDING.

## A HOME ON.... Easy Terms.



Clean side of the street; no dust. Perpetual water-right from Artesian well goes with each lot. GOOD LOCATION; near car line.  
ONLY PART CASH: balance on long time with low interest.

**WILLIAM SAVIDGE,**  
No. 310 FORT STREET. M'CINERNEY BLOCK.

## GOO KIM, 210 NUANU STREET.

ABOVE HOTEL.

Muslin in all Colors and Grades, Calico Dress Goods, New Prints, Linen Table Covers, Colored and White Lace Curtains, Chenille Curtains, Chenille Table Covers (all sizes), Victoria Lawns, Organadies (plain and in colors), Grass Cloth (white, blue and brown), Carved Sandalwood, Glove and Handkerchief Boxes and Fans, Camphorized Trunks, Pongee Silk, Silk-Embroidered Table Covers (in 3 sizes).

## TAILORING A SPECIALTY.



## SALTER'S GROCERY

Orpheum Block, Fort Street.  
TELEPHONE 680.



# Real Estate FOR SALE.

1. A few elegant lots at Manoa, on the road, with unsurpassed view and climate; on line of proposed rapid transit; easy terms.
2. Several town lots on Beretania street; Ewa side of Geo. Ross.
3. Lots in different parts of Ke-walo Tract.
4. Kapiolani Park Addition lots.
5. Two homes at Kewalo.
6. Long leasehold at Kakaako with fine returns; near new foundry.
7. A few more lots of all sizes in different parts of the most desirable locations of Kalia, with good views, macadamized streets, and water supply from city. These lots I will sell at your own terms.
8. Two more large choice lots at Kalia; Ewa side D. D. Myers, Esq., commanding an unsurpassed view; on fine street, with city water supply.
9. Lot on Anapuni street, Punahou, 75x103.
10. Fine house; corner lot, #12 125, at Punahou; terms easy.
11. Three-fourths of an acre house lot at Kamili, high grounds, will sell cheap.

## ISLAND STOCKS AND BONDS FOR SALE.

Will buy or sell outright city suburban real estate.

—APPLY TO—  
**J. H. SCHNACK,**  
Dealer in REAL ESTATE and STOCK BROKER.

223 MERCHANT STREET.  
P. O. BOX 104.

## WAILUA AGRICULTURAL CO. LTD.

THE FIFTH ASSESSMENT OF 10 per cent (\$10.00 per share) on the assessable stock of the Wailua Agricultural Co., Ltd., is due and payable September 15, 1899, at the office of Chas. H. Atherton, Ltd.; ten per cent (\$10.00 per share) additional is due and payable on November 15, 1899, and every two months thereafter up to and including May 15, 1900.  
W. A. BOWEN,  
Treas. Wailua Agricultural Co., Ltd.  
5259

## NOTICE.

NOTICE IS HEREBY GIVEN THAT an assessment of 50 per cent on the capital stock of the Orpheum Co., Ltd., to make same fully paid up, has been levied and same is due and payable on the 10th day of October, 1899. The shares upon which any assessment may remain unpaid after 30 days from date will be declared delinquent.  
By order of directors,  
H. M. LEVY,  
Secretary.  
October 10, 1899. 5259

## ASSESSMENT NOTICE.

THE THIRD ASSESSMENT OF 5 per cent (\$1 per share) on the assessable stock of the Kamalo Sugar Co., Ltd., is due and payable at my office September 15, 1899, and delinquent on October 15, 1899.  
FRANK HUSTACE,  
Treasurer.  
5226

## ASSESSMENT NOTICE.

NOTICE IS HEREBY GIVEN THAT the fourth assessment of ten (10) per cent on the capital stock of the Honolulu Rapid Transit & Land Co., will be due and payable to J. H. Fisher at Bishop & Co., bankers, Honolulu, on the 1st day of October, prox. The shares upon which any assessment may remain unpaid after thirty days from said date will be declared delinquent.  
CHAS. H. ATHERTON,  
Secretary H. R. T. & L. Co.  
Honolulu, Sept. 26, 1899.

## NOTICE

MISS NINA ADAMS WILL OPEN classes in physical culture at the Y. M. C. A. gymnasium. Ladies' class, Wednesdays and Saturdays, 8:45 a. m.; children's class, Saturdays, 9:30 a. m.; teachers' class, Saturdays, 10:15 a. m.  
5256

## NOTICE.

A QUARTERLY DIVIDEND WILL be due and payable to the stockholders of Wilder's Steamship Co., Ltd., on Saturday, the 20th inst. The stock books are closed to transfers from this date to October 2, 1899.  
S. B. ROSE, Secretary.  
Honolulu, Sept. 29, 1899. 5260