

ty. Rugged mountains, snow-capped and timber clad, clear, swift-running streams and rivers; fertile valleys with grain fields, orchards and herds of cattle and sheep; mines of gold, silver and lead; come and look at what we have to show you.

All the writing in the world will not convince the hard-headed man who wants to be shown. And that is just what we want to do.

WE WANT TO SHOW YOU.

as far as Salmon, which has roads leading thence to all parts of the county. The Salmon river being nevigable down stream affords a cheap means of taking supplies down the river.

The county therefore offers today what it never has been able to do in the past, to the prospector a field where, if he finds a good prospect, he can count on selling same; and to men who develop the pros-

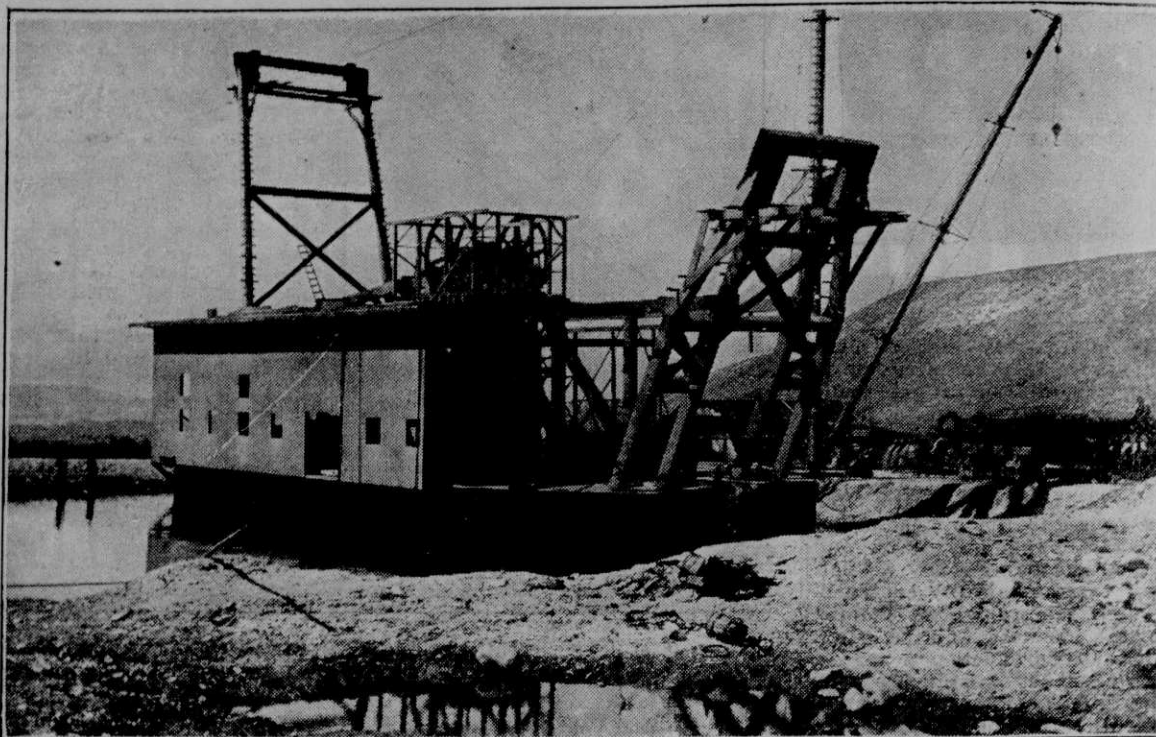
pects a ready and cheap means of marketing the ores. In return the county asks the men who have the experience in mining, the ability to develop a prospect into a mine, and willingness to invest their money backing their judgment, to come in and look the county over from one end to the other, taking the time to examine the numerous prospects offered and we feel sure that among the showing some one will be found

The Mining Industry of Lemhi County, Idaho

(By J. W. Caples, Mining and Civil Engineer.)

THIS article being limited to twenty-five hundred words cannot be expected to cover the entire county in a detailed account of its mines, ores and geology, but must simply, in a general way, cover the field. Therefore it will be the object of the writer to present such facts as will be of interest to the prospector to guide him in his choice of the section of the country to work in; to the general public to give them an idea of the wonderful mineral resources of the county; to the investor in mines, to let him know that Lemhi county, is the most promising field in the west for the making of dividend producers. As this article is to be published in an agricultural paper, it will, no doubt, be read more by the prospectors and the general public than the mine promoter.

It has been hard in the past for either the prospector or the mining man to work with success in Lemhi county. This was due to the inaccessibility of the country. In a large measure this has been overcome by the building of the Gilmore and Pittsburg railroad, which furnishes ready ingress and egress to all points in the Lemhi valley, and with its proposed extensions will make all points in the county within reach of railroad transportation. The railroad today is built



INCOMPLETED GOLD DREDGE ON KIRKLEY CREEK FOUR MILES FROM SALMON, CONSTRUCTED AT A COST OF \$150,000—WILL BE READY FOR OPERATION OCTOBER 15—ONE OF THE MOST COMPLETE HYDRAULIC DREDGES EVER CONSTRUCTED.



OR INFORMATION about the wonderful Lemhi Country address either

SECRETARY, SALMON CITY COMMERCIAL CLUB
Salmon, Idaho

or

NEWTON HIBBS, COUNTY PUBLICITY AGENT
Salmon, Idaho

"They will tell you the truth"