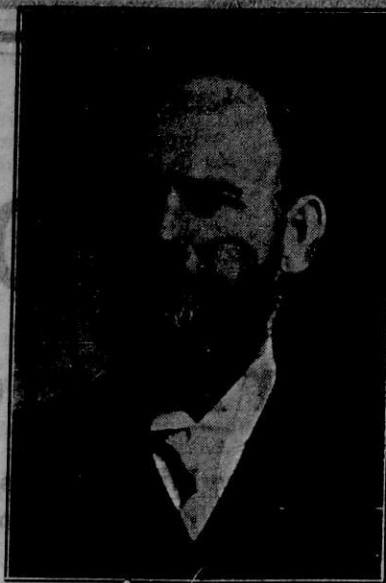


ket for dairy products is certain for all time and the best prices.

Stock Raising.

The stock industry of the Lemhi county district has wonderful past history and a better future outlook. The valleys are narrow, and they are surrounded by mountainous meadows of the most nutritious grasses. The ranges never get dry from drouth. There are wild meadows sweet with bloom and rich in green color for all the Spring and Summer months. The fields grow clover and many other rich meadow and pasture grasses spontaneously. The most rugged ranges grow grasses equal to a ton of hay per acre in feed value. This range is free. It is the back gate of every farm to supplement the meadows



N. J. ANDREWS.
Member of constitutional convention of the State of Idaho, has been a resident of Lemhi County for 25 years. One of the most active business men of the county.

Meadow Lands.

Our timothy and clover meadows in Lemhi county produce the greatest tonnage known to this class of farming. Large meadows have records of over four tons of baled hay per acre from one cutting. Our alfalfa records are not the greatest in tonnage per season but the quality of hay is the very best. Six tons per acre is a conservative estimate for extensive meadows. This product is lacking only in the amount of woody stems which make the bigger tonnage of the boom literature of other sections. For feed value no place in the great Northwest grows a better alfalfa crop than the valleys of Lemhi county. These meadows grow perpetually, without reseeded. There are instances of 25 years of continuous cropping without any reseeded or cultivation, in timothy, clover and alfalfa meadows. The only requirement has been rational methods of irrigation.

Grain Crops.

The commercial grain crops of Lemhi county are wheat, oats, barley and rye. No fertilizers have been needed to produce the biggest yield of these grains. The application of water seems to release the very and only elements of fertility required to make the best possible growth of these grains. The only danger presented is too rank a growth. The oldest fields in the County seem to be the most productive. Oats to the amount of 100 bushels to the acre are grown every season. There have been more crops of 100 bushels to the acre grown in this valley than in any

other whole state in the Union. These great crops have not reduced the fertility in forty years of continued cultivation. The artificial application of water to the soil which had been desiccated for ages releases a fertility which seems to be perpetual. It may be that the water carries with it just the chemical element that is required to make a complete fertilizer.

Soil Conditions.

The soil of Lemhi County is of sedimentary origin. It holds chemical elements not found in any other section of the great Northwest. It is surely the most prolific soil in the world, when irrigation water is supplied. The volcanic ash which makes extensive fields famous carries a few of the properties of the highest requirements of fertility. The sediments of centuries and the deposits of glaciers and floods are deeper and richer than any ash bed. The fire test surely would not add to our soils. We want the wet process of fertility.

Climate.

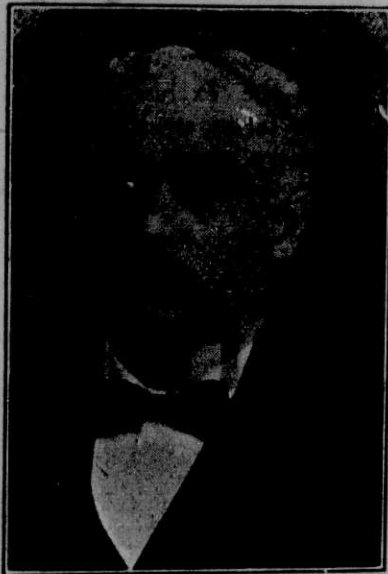
The climate of the Lemhi County district is suited to all crop production in the highest degree. Our seasons are well defined. There are no



delayed winter blasts to come along and blight the life that is started by a premature Spring. When Spring comes there is no more frosts to blight the fruit and other crops and the hopes of the farmer. The snow lingers in our mountains and holds down the temperature till perpetual sunshine wins a complete victory for Spring. Winter never renews the attack. The feeble efforts of man to fight the elements with a pot of oil would be most ridiculous. While the orchardists of other districts are frantically trying to temper the north winds our fruit buds are dormant in sleep. There is no instance of serious damage to any crop from Fall or Spring frosts in the valleys of Lemhi County. The Summers linger till all of the common crops are ripened. We can make definite estimates of our seasons and we can control the growth of our crops to a definite season by the correct use of water. Our fruits are an absolutely certain crop and the quality is uniformly perfect in the highest degree. All the elements of uncertainty in crop production are eliminated in this district where seasons are well defined and the fertility of the soil is perfect.

Atmospheric Conditions.

The Lemhi County district nestles in the protecting shelter of the Main range of the Rocky mountains. There are no winter blizzards, nor



GEO. W. KINGSBURY,
Business man and present County Commissioner of Lemhi County.

and fields to fatten stock and keep it fat all the year round. This combination turns out the biggest and fattest beef cattle in the West. The climate and all other conditions favor the production of meat as well as dairy products. The winters are so even in temperature that cattle can be fed without shelter. There are no wind storms, not even breezes—to chill stock in open yards. Under these favorable conditions the feed value of our big hay crops is not less than \$15.00 per ton, when used for meat production and twice that as a dairy feed.



F. B. SHARKEY,
Oldest pioneer of Lemhi County. One of the party of five which discovered the gold camp of Leesburg in 1865, which discovery resulted in the production of thirty millions of dollars in gold and brought a population of 10,000 people to Lemhi County in one year.



WILBUR F. STONE.
Pioneer merchant of Junction, Idaho, and present County Commissioner of Lemhi County.

**The Old Reliable
LEMHI
REALTY
COMPANY**

Choice Chicken
and Fruit Ranches
a specialty, Farms
and City properties.

**P. J. Dempsey, Mgr.
Salmon, Idaho**

For Information

ABOUT

INVESTMENTS

IN

LAND OR MINES

WRITE

B. C. d'EASUM

SALMON CITY,

IDAHO.