

# John M. Smyth Co.

Madison St., near Halsted St.

The Largest and Most Complete House Furnishing Mart on Earth.

During its 43 Years of existence it has furnished over a million homes.

**Established 1867**

**Dr. Kolacek & Co.**  
2030-2042 MILWAUKEE AVE.

RETAILERS IN ALL KINDS OF  
**GENERAL MERCHANDISE**

BIGGEST QUALITIES AND LOWEST PRICES

**A STORE FOR EVERYBODY**

JOHN T. CONNERY, President  
F. W. BLOCK, Vice-President

JAS. P. CONNERY, Secretary  
H. F. FILER, Treasurer

## Miami Coal Company

INDIANA BITUMINOUS COAL

Mines at Clinton and Ehrmandale, Ind

Capacity 3,000 Tons per Day

1804 McCormick Bldg., CHICAGO

ALL PHONES:  
Harrison 2010 Automatic 62015

# John M. Ewen Co.

**ENGINEERS**

AND

**BUILDERS**

THE ROKERY CHICAGO

CAPACITY—4,000 BARRELS PER DAY

B. A. ECKHART, Proprietor

# B. A. ECKHART MILLING CO.

(NOT INCORPORATED)

**MERCHANT MILLERS**

1300 to 1332 CARROLL AVE.

From Elizabeth St. to Ada St.

Our new 4,000-Barrel Mills are now in full operation, producing the finest grades of Spring and Winter Flour made in the world. Ours are the finest and only mills in the United States arranged with the complete and improved Hungarian Sifter System.

Eckhart & Swan's "XXXX BEST PATENT"

is the highest grade of HARD WHEAT PATENT FLOUR world, manufactured from No. 1 Hard Wheat.

Cable Address—"ECKHART" Long Dist. Phone—Monroe 97

# Pugh Terminal Warehouse Company

365 East Illinois Street

Telephone Randolph 2021

CHICAGO

# FRAZER

The Best Axle Grease in the WORLD.



MADE IN NEW YORK, Chicago, St. Louis.

## AXLE GREASE

For Omnibuses, Carriages, Wagons, Traps and Threshing Machines.

FRAZER LUBRICATOR CO., MANUFACTURERS

JAMES LYMAN

WILLIAM E. LYMAN

# JAMES LYMAN & CO.

General Contractors.

Suite 1409 Ashland Blook

N. E. Cor. Clark and Randolph Sts.

Telephone Main 520

# Great Lakes Dredge & Dock Co.

CONTRACTORS

River and Harbor Improvements

1317 to 1322 Chamber of Commerce Bldg.

Telephone Main 5929

Telephone Harrison 3446

# H. R. GIBBONS

DEALER IN NEW AND SECOND-HAND

## PACKING BOXES

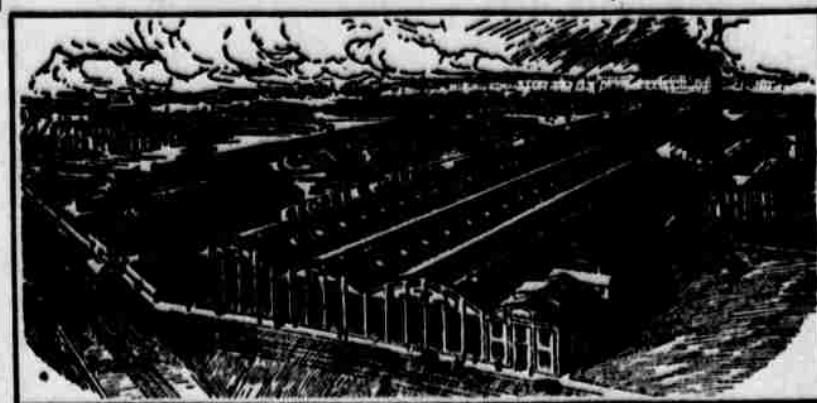
Office: 536 South Canal Street  
Warehouse: Carroll Avenue and Curtis Street

CHICAGO

Designers and Builders of Structural Steel for Bridges and Buildings of Any Type

Largest and Best Equipped Plant West of Pittsburg

ANNUAL CAPACITY 70,000 tons



A personal inspection of the plant is invited, 2023-2069 Elston Ave.

NO CONTRACT TOO LARGE FOR OUR FACILITIES. NO ORDER TOO SMALL TO RECEIVE THE VERY BEST ATTENTION.

Send us your plans and specifications for estimates.

# GEO. W. JACKSON, Inc.

General Offices and Plant, 754-756 Jackson Blvd.

Telephone Monroe 3400, All Departments CHICAGO

NEW YORK OFFICES: 48 Wall Street

# Rich Lumbermen

of today, are those who get timberland while it was cheap. It is at the bottom now and cheaper than it will ever be again. Ask me about it.

I BUY AND SELL

John C. Spry

1230 Corn Exchange Bldg., Chicago

FRED W. UPHAM  
President

O. O. AGLER  
Secretary and Treasurer

# FRED W. UPHAM LUMBER CO.

WISCONSIN HARDWOOD

332 SOUTH MICHIGAN AVE.

Phone Central 6720

Z. R. CARTER

J. B. CARTER

# Z. R. Carter & Bro.

WHOLESALE DEALERS IN

# GRAIN and HAY

Halsted and 16th Streets

Telephone Canal 27

CHICAGO, ILL.

PETER BARTZEN

FRANK S. BARTZEN

# PETER BARTZEN & SON MASON and GENERAL CONTRACTORS

4739 LINCOLN AVENUE  
15 E. Cedar Lawrence Avenue

Tel. Edgewater 871

CHICAGO, ILL.

# BUSINESS MEN

Desks and Office Fittings

# REVELL'S

N. E. Cor. Wabash Ave. and Adams St.

# Tom N. Donnelly & Co.

LOAN AND DIAMOND

# BROKERS!

24 N. Dearborn Street

CHICAGO

Watches and Jewelry Repaired