

# John M. Smyth Co.

Madison St., near Halsted St.

☐ The Largest and Most Complete House Furnishing Mart on Earth.

☐ During its 43 Years of existence it has furnished over a million homes.

**Established 1867**

**Dr. Kolacek & Co.**  
2030-2042 MILWAUKEE AVE.

DEALERS IN ALL KINDS OF  
**GENERAL MERCHANDISE**  
HIGHEST QUALITIES AND LOWEST PRICES

**A STORE FOR EVERYBODY**

JOHN T. CONNERY, President  
F. W. BLOOKI, Vice-President  
JAS. P. CONNERY, Secretary  
H. P. FILER, Treasurer

**Miami Coal Company**  
INDIANA BITUMINOUS COAL

Mines at Clinton and Ehrmandale, Ind

Capacity 3,000 Tons per Day

1804 McCormick Bldg., CHICAGO  
ALL PHONES:  
Harrison 2010 Automatic 63013

**John M. Ewen Co.**

**ENGINEERS**  
AND  
**BUILDERS**

THE WORKERY CHICAGO

## ELECTRIC LIGHT AND POWER

By far the best and most satisfactory wherever light and power are required. We do only the highest grade of wiring and construction work. Estimates promptly furnished. Let us figure with you.

**Commonwealth Edison Co.**  
Edison Building  
120 W. Adams St.  
CHICAGO  
Phone Randolph 1280

**Tom N. Donnelly & Co.**  
LOAN AND DIAMOND  
**BROKERS!**  
24 N. Dearborn Street  
CHICAGO  
Watches and Jewelry Repaired

CAPACITY—4,000 BARRELS PER DAY

B. A. ECKHART, Proprietor

## B. A. ECKHART MILLING CO.

(NOT INCORPORATED)

### MERCHANT MILLERS

1300 to 1332 CARROLL AVE.  
From Elizabeth St. to Ada St.

Our new 4,000-Barrel Mills are now in full operation, producing the finest grades of Spring and Winter Flour made in the world. Ours are the finest and only mills in the United States arranged with the complete and improved Hungarian Sifter System.

**Eckhart & Swan's "XXXX BEST PATENT"**

Is the highest grade of HARD WHEAT PATENT FLOUR in the world, manufactured from No. 1 Hard Wheat.

Cable Address—"ECKHART" Long Dist. Phone—Menroe 97

## Pugh Terminal Warehouse Company

365 East Illinois Street

Telephone Randolph 2821

CHICAGO

## FRAZER

The Best  
Axle Grease  
in the  
World.



New York,  
Chicago,  
St. Louis.

## AXLE GREASE

For Omnibuses, Carriages, Wagons,  
Trays and Threshing Machines.

FRAZER LUBRICATOR CO., MANUFACTURERS

JAMES LYMAN

WILLIAM H. LYMAN

## JAMES LYMAN & CO.

General Contractors

Suite 1409 Ashland Block

N. E. Cor. Clark and Randolph Sts.

Telephone Main 2200

## Great Lakes Dredge & Dock Co.

CONTRACTORS  
River and Harbor Improvements

1201-1216 Monroe Building, Michigan Avenue  
and Monroe Street  
Telephone Randolph 6111

Telephone Wabash 2528

## H. R. GIBBONS

Dealer in New and Second-Hand

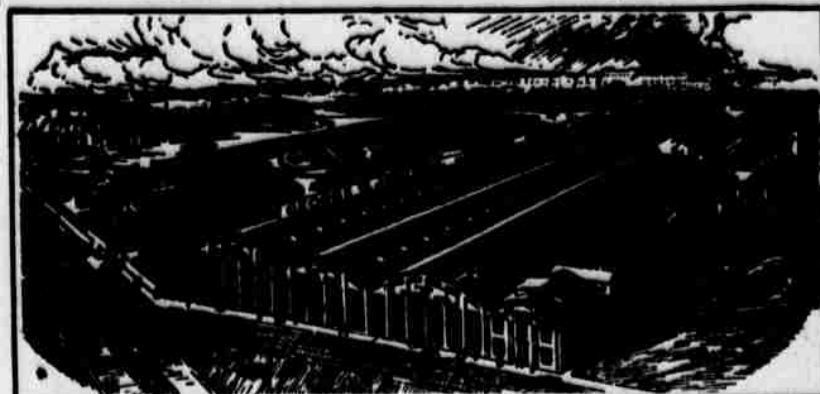
## Packing Boxes

Office: 600 South Canal Street  
CHICAGO

Designers and Builders of Structural Steel  
for Bridges and Buildings of Any Type

Largest and Best Equipped  
Plant West of Pittsburgh

ANNUAL CAPACITY . . . 70,000 tons



A personal inspection of the plant is invited,  
2023-2069 Elston Ave.

NO CONTRACT TOO LARGE FOR OUR FACILITIES. NO ORDER  
TOO SMALL TO RECEIVE THE VERY BEST ATTENTION.

Send us your plans and specifications  
for estimates.

## GEO. W. JACKSON, Inc.

General Offices and Plant, 754-756 Jackson Blvd.

Telephone Monroe 3400, All Departments

CHICAGO

NEW YORK OFFICE: 40 Wall Street

## Rich Lumbermen

of today, are those who get timberland  
while it was cheap. It is at the  
bottom now and cheaper than it will  
ever be again. Ask me about it.

I BUY AND SELL

John C. Spry

1230 Corn Exchange Bldg., Chicago

FRED W. UPHAM  
President

O. O. ADLER  
Secretary and Treasurer

## FRED W. UPHAM LUMBER CO.

WISCONSIN HARDWOOD

332 SOUTH MICHIGAN AVE.

Phone Central 6720

## BUY YOUR

Carpets, Rugs  
Brass and Iron Beds

From the Old Reliable  
Cash Furniture, Hardware and Paint Store

## HENRY STUCKART

2511 to 2519 Archer Avenue  
Phone Yards 27

PETER BARTZEN

FRANK S. BARTZEN

## PETER BARTZEN & SON MASON and GENERAL CONTRACTORS

4739 LINCOLN AVENUE  
N. E. Corner Lawrence Avenue

Tel. Edgewater 871

CHICAGO, ILL.

## BUSINESS MEN

Desks and Office  
Fittings

## REVELL'S

N. E. Cor. Wabash Ave. and Adams St.