

# John M. Smyth Co.

Madison St., near Halsted St.

☐ The Largest and Most Complete House Furnishing Mart on Earth.

☐ During its 43 Years of existence it has furnished over a million homes.

**Established 1867**

## Dr. Kolacek & Co.

2030-2042 MILWAUKEE AVE.

RETAILERS IN ALL KINDS OF  
**GENERAL MERCHANDISE**

BEST QUALITIES AND LOWEST PRICES

**A STORE FOR EVERYBODY**

JOHN T. CONNERY, President  
F. W. BLOSKI, Vice-President

JAS. P. CONNERY, Secretary  
H. P. FILER, Treasurer

### Miami Coal Company

INDIANA BITUMINOUS COAL

Mines at Clinton and Ehrmandale, Ind

Capacity 3,000 Tons per Day

1804 McCormick Bldg., CHICAGO

ALL PHONES:  
Harrison 2010 Automatic 49018

## John M. Ewen Co.

**ENGINEERS  
AND  
BUILDERS**

THE WORKERY CHICAGO

### ELECTRIC LIGHT AND POWER

By far the best and most satisfactory wherever light and power are required. We do only the highest grade of wiring and construction work. Estimates promptly furnished. Let us figure with you.

#### Commonwealth Edison Co.

Edison Building  
120 W. Adams St.  
CHICAGO  
Phone Randolph 1280

### Tom N. Donnelly & Co.

LOAN AND DIAMOND

## BROKERS!

24 N. Dearborn Street  
CHICAGO

Watches and Jewelry Repaired

CAPACITY—4,000 BARRELS PER DAY

B. A. ECKHART, Proprietor

## B. A. ECKHART MILLING CO.

(NOT INCORPORATED)

### MERCHANT MILLERS

1300 to 1332 CARROLL AVE.  
From Elizabeth St. to Ada St.

Our new 4,000-Barrel Mills are now in full operation, producing the finest grades of Spring and Winter Flour made in the world. Ours are the finest and only mills in the United States arranged with the complete and improved Hungarian Sifter System.

#### Eckhart & Swan's "XXXX BEST PATENT"

is the highest grade of HARD WHEAT PATENT FLOUR in the world, manufactured from No. 1 Hard Wheat.

Cable Address—"ECKHART" Long Dist. Phone—Monroe 97

### MOTOR TRUCK DELIVERY AND 54 YARDS MEAN PROMPTNESS AND ECONOMY

PHONE WABASH 3436



PHONE AUTOMATIC 62-022

TO GET THE BEST IN SERVICE AND QUALITY CALL

## CITY FUEL CO.

332 South Michigan Avenue

## FRAZER

The Best Axle Grease in the World.



New York, Chicago, St. Louis.

### AXLE GREASE

For Omnibuses, Carriages, Wagons, Bays and Threshing Machines.

FRAZER LUBRICATOR CO., MANUFACTURERS

JAMES LYMAN

WILLIAM H. LYMAN

## JAMES LYMAN & CO.

General Contractors

Suite 1409 Ashland Block

N. E. Cor. Clark and Randolph Sts.

Telephone Main 228

### Great Lakes Dredge & Dock Co.

CONTRACTORS

River and Harbor Improvements

1201-1216 Monroe Building, Michigan Avenue and Monroe Street  
Telephone Randolph 6111

Telephone Wabash 2528

## H. R. GIBBONS

Dealer in New and Second-Hand

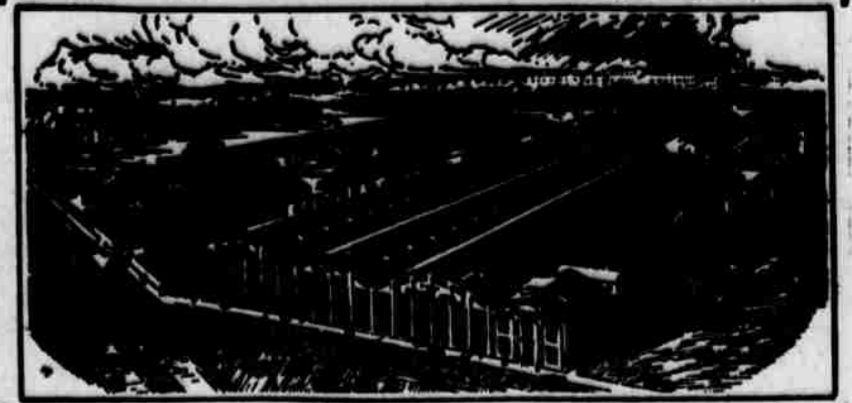
### Packing Boxes

Office: 600 South Canal Street  
CHICAGO

Designers and Builders of Structural Steel for Bridges and Buildings of Any Type

Largest and Best Equipped Plant West of Pittsburg

ANNUAL CAPACITY 70,000 tons



A personal inspection of the plant is invited, 2023-2080 Elston Ave.

NO CONTRACT TOO LARGE FOR OUR FACILITIES. NO ORDER TOO SMALL TO RECEIVE THE VERY BEST ATTENTION.

Send us your plans and specifications for estimates.

## GEO. W. JACKSON, Inc.

General Offices and Plant, 754-756 Jackson Blvd.

Telephone Monroe 3400, All Departments CHICAGO

NEW YORK OFFICE: 40 Wall Street

## Rich Lumbermen

of today, are those who got timberland while it was cheap. It is at the bottom now and cheaper than it will ever be again. Ask me about it.

I BUY AND SELL

John C. Spry

1230 Corn Exchange Bldg., Chicago

FRED W. UPHAM  
President

O. O. AGLER  
Secretary and Treasurer

## FRED W. UPHAM LUMBER CO.

WISCONSIN HARDWOOD

332 SOUTH MICHIGAN AVE.

Phone Central 6720

## BUY YOUR

Carpets, Rugs  
Brass and Iron Beds

From the Old Reliable  
Cash Furniture, Hardware and Paint Store

### HENRY STUCKART

2511 to 2519 Archer Avenue  
Phone Yards 27

PETER BARTZEN

FRANK A. BARTZEN

## PETER BARTZEN & SON MASON and GENERAL CONTRACTORS

4739 LINCOLN AVENUE  
at E. Cass Street

Tel. Edgewater 871

CHICAGO, ILL.

## BUSINESS MEN

Desks and Office Fittings

## REVELL'S

N. E. Cor. Wabash Ave. and Adams St.