

# John M. Smyth Co.

Madison St., near Halsted St.

☐ The Largest and Most Complete House Furnishing Mart on Earth.

☐ During its 43 Years of existence it has furnished over a million homes.

**Established 1867**

CAPACITY—4,000 BARRELS PER DAY  
B. A. ECKHART, Proprietor

## B. A. ECKHART MILLING CO.

(NOT INCORPORATED)  
**MERCHANT MILLERS**

1300 to 1332 CARROLL AVE.  
From Elizabeth St. to Ada St.

Our new 4,000-Barrel Mills are now in full operation, producing the finest grades of Spring and Winter Flour made in the world. Ours are the finest and only mills in the United States arranged with the complete and improved Hungarian Sifter System.

**Eckhart & Swan's "XXXX BEST PATENT"**

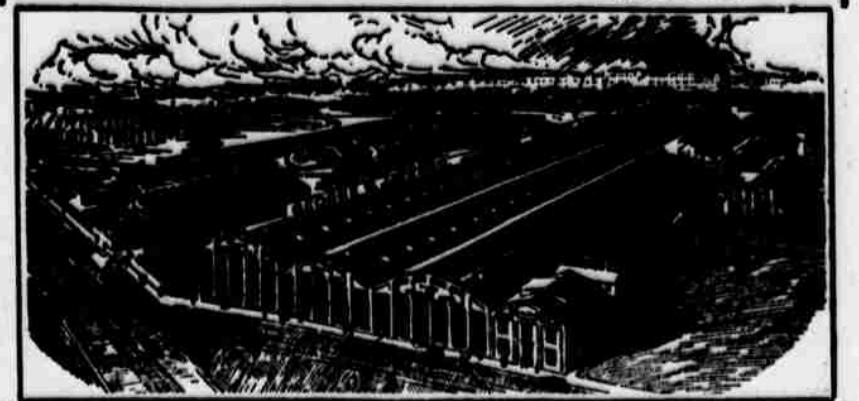
Is the highest grade of HARD WHEAT PATENT FLOUR in the world, manufactured from No. 1 Hard Wheat.

Cable Address—"ECKHART" Long Dist. Phone—Monroe 97

Designers and Builders of Structural Steel for Bridges and Buildings of Any Type

**Largest and Best Equipped Plant West of Pittsburg**

ANNUAL CAPACITY . . . 70,000 tons



A personal inspection of the plant is invited, 2023-2069 Elston Ave.

NO CONTRACT TOO LARGE FOR OUR FACILITIES. NO ORDER TOO SMALL TO RECEIVE THE VERY BEST ATTENTION.

Send us your plans and specifications for estimates.

**GEO. W. JACKSON, Inc.**

General Offices and Plant, 754-756 Jackson Blvd.

Telephone Monroe 3400, All Departments CHICAGO

NEW YORK OFFICES: 40 Wall Street

**MOTOR TRUCK DELIVERY AND 54 YARDS**  
MEAN PROMPTNESS AND ECONOMY

PHONE WABASH 3456



PHONE AUTOMATIC 62-022

TO GET THE BEST IN SERVICE AND QUALITY CALL

**CITY FUEL CO.**

332 South Michigan Avenue

**Rich Lumbermen**

of today, are those who get timberland while it was cheap. It is at the bottom now and cheaper than it will ever be again. Ask me about it.

I BUY AND SELL

John C. Spry

1230 Corn Exchange Bldg., Chicago

**Dr. Kolacek & Co.**  
2030-2042 MILWAUKEE AVE.

RETAILERS IN ALL KINDS OF  
**GENERAL MERCHANDISE**

HIGHEST QUALITIES AND LOWEST PRICES

**A STORE FOR EVERYBODY**

**ELECTRIC LIGHT AND POWER**

By far the best and most satisfactory wherever light and power are required. We do only the highest grade of wiring and construction work. Estimates promptly furnished. Let us figure with you.

**Commonwealth Edison Co.**

Edison Building  
120 W. Adams St.  
CHICAGO  
Phone Randolph 1280

**FRAZER**

The Best Axle Grease



New York, Chicago, St. Louis.

**AXLE GREASE**

For Omnibuses, Carriages, Wagons, Drays and Threshing Machines.

**FRAZER LUBRICATOR CO., MANUFACTURERS**

JAMES LYMAN

WILLIAM E. LYMAN

**JAMES LYMAN & CO.**

General Contractors.

Suite 1409 Ashland Block

N. E. Cor. Clark and Randolph Sts.

Telephone Main 288

FRED W. UPHAM  
President

O. O. AGLER  
Secretary and Treasurer

**FRED W. UPHAM LUMBER CO.**

WISCONSIN HARDWOOD

332 SOUTH MICHIGAN AVE.

Phone Central 6720

JOHN T. CONNERY, President  
F. W. BLOCKI, Vice-President

JAS. P. CONNERY, Secretary  
H. F. PILER, Treasurer

**Miami Coal Company**

INDIANA BITUMINOUS COAL

Mines at Clinton and Ehrmandale, Ind

Capacity 3,000 Tons per Day

1804 McCormick Bldg., CHICAGO

ALL PHONES: Harrison 2010 Automatic 43013

**John M. Ewen Co.**

**ENGINEERS**

AND

**BUILDERS**

THE WABASH

CHICAGO

**Tom N. Donnelly & Co.**

LOAN AND DIAMOND

**BROKERS!**

24 N. Dearborn Street

CHICAGO

Watches and Jewelry Repaired

**FRED A. BUSSE COMPANY**

Anthracite **COAL** Bituminous

Indiana Block, Pocahontas and Washed Coal

707 Fort Dearborn Bldg., Chicago

S. W. Cor. Monroe and Clark Sts.

Telephone Randolph 5678.

Telephone Wabash 2525

**H. R. GIBBONS**

Dealer in New and Second-Hand

**Packing Boxes**

Office: 600 South Canal Street  
CHICAGO

PETER BARTZEN

FRANK S. BARTZEN

**PETER BARTZEN & SON**  
MASON and GENERAL CONTRACTORS

4739 LINCOLN AVENUE  
N. E. Corner Lawrence Avenue

Tel. Edgewater 571

CHICAGO, ILL.

**BUSINESS MEN**

**Desks and Office Fittings**

**REVELL'S**

N. E. Cor. Wabash Ave. and Adams St.