

Be More Beautiful

Remarkable Preparation Makes It Easy for Anyone to Quickly Gain Long, Soft, Silky, Lustrous Hair.

A wonderful preparation has been discovered that changes short, coarse hair into long, lustrous. It gives the hair a beautiful glossy sheen. It puts growing hair into better, thicker hair; stops deadfall and itching scalp. This marvelous preparation is

EXELENTO QUININE POMADE

It has given thousands the beautiful hair which is one of their chief attractions. It has made straight, silky hair possible for you, yourself, to obtain.

Another marvelous beauty help is EXELENTO SKIN BEAUTIFIER, a delightful cream that quickly removes skin blemishes and clears up in an astonishing manner dark, sallow complexions. If your complexion cannot supply you, send us 10¢ in stamps or coin for full size packages of both Pomade and Beautifier, or send 50¢ for single package. Gain the attractive beauty, you soon can have, by getting the EXELENTO preparations NOW!

EXELENTO MEDICINE COMPANY, Atlanta, Ga.
AGENTS WANTED EVERYWHERE—Write for Particulars



This young lady gives all the credit for her beautiful hair and complexion to EXELENTO preparations.

America's Pipe Lines.

At one time or another almost every barrel of oil produced in the United States is crisscrossed through a pipe line. The flow of oil in the fifty thousand miles of pipe line never stops. Different grades of oil are separated from one another by "headers," which are merely partitions of water three feet long.

Beautiful Light of Cheerfulness.

Laughing cheerfulness throws the light of day on all the paths of life.—Jean Paul.

Five-Year Span.

The average life of an automobile in the United States is estimated at five years.

Dissecting the Grumbler.

Grumblers deserve to be operated upon surgically; their trouble is usually chronic.—Douglas Jerrold.

Flowering Plants in Britain.

Flowering plants known in the British Isles include over a quarter of a million varieties.

TELEPHONE DOUGLAS 4841

J. GRAY LUCAS
Attorney-at-Law

204 East 35th Street

Chicago

Corner Indiana Ave., Second Floor

Another Nature Fake.

Exchange—The bride's father, born 82 years ago with long white beard and a noble mien, led her to the altar.—Boston Evening Transcript.

Phone Yards 27

FURNITURE

Brass and Wood Beds, Electric Washers, Refrigerators, Stoves, Paint, Oil, Hardware, Linoleum

HENRY STUCKART

2515-19 ARCHER AVE.

TELEPHONE DOUGLAS 1

GEORGE F. HARDING, JR.

REAL ESTATE

Up-to-Date or Modern Houses, Apartments and Stores to Rent

3101 COTTAGE GROVE AVE.

Corner 31st Street, Chicago

Statement of Condition

At Close of Business on

Sept. 15th, 1922



LINCOLN STATE BANK OF CHICAGO

Under State Government Supervision

31st and South State Streets

Telephone Victory 4500

RESOURCES	
Loans and Discounts	\$1,355,980.10
(Inspected and approved by our Board of Directors)	
Bonds and Securities	704,224.81
Stocks	20,778.00
(Lincoln State Safety Vault Co.)	
Bank Building and Annex	156,078.25
Furniture and Fixtures	24,124.29
Other Resources	10,125.27
Cash on Hand and Due from Banks	564,420.27
Total	\$2,831,809.09
LIABILITIES	
Capital Stock	\$ 300,000.00
Surplus	20,000.00
Undivided Profits	26,644.43
Reserved for Taxes and Interest	3,122.26
Other Liabilities	6,971.43
Deposits	2,464,625.07
Total	\$2,831,809.09

Increase in Deposits Since June 30, 1922

(\$270,000.00)

This Bank invites you to avail yourself of its complete facilities.

First Mortgage—Gold Bonds—approved safe investments—yield 7% interest. Loans in our completely equipped Safety Deposit Vault, rent for \$4.00 per year and upwards.

Interest at the rate of 3% is allowed on all saving accounts. Savings Departments open from 9 a. m. to 5 p. m. Saturdays.

GEORGE F. LEIBRANDT, President
CHARLES A. WHITE, Vice-President
GEORGE S. CAMPBELL, Cashier
L. A. DELAURIER, Asst. Cashier
ADDISON E. AVERT, Mer. Bond Dept.

PILING UP DOLLARS IS A FASCINATING GAME

You can play this game and be "dead sure" to win. A \$1.00 deposit at our Bank will start it. Pile them in with unflinching regularity. The greatest things have grown from small beginnings. When may we expect you—make it today!



ILLINOIS TRUST & SAVINGS BANK
La Salle and Jackson Streets Chicago

IS YOUR HAIR SHORT OR THIN?



Does it break off or fall out? Is it dry and wiry? Have you scalp disease, or more than a normal amount of dandruff?

If so, you should act at once, begin using MADAME N. A. FRANKLIN'S HAIR GROWER. It matters not how many Hair Preparations you have tried without success, you should not become discouraged and give up before giving my Hair Grower a trial. It has promoted an abundant growth of hair for thousands and will do the same for you. I also teach my System by mail or by person. Write for information and terms today.

MY SPECIAL OFFER
To those desiring to try my wonderful Hair Preparations I will mail, on request, a SIX WEEKS' TRIAL TREATMENT, consisting of Shampoo, Hair Grower and Pressing Oil, with full instructions how to use the same, for only \$1.10. One trial treatment will convince you of its value. Make all orders to
MADAME N. A. FRANKLIN
Dept. B, 3242 So. State St., Chicago, Ill.
Dept. B, 605 Prairie Ave., Chicago, Ill.

JAS. B. McCAHEY, President
FRANK J. DUNN, Vice-President
PHILIP J. DUNN, Secretary
H. X. COMERFORD, Treasurer

JOHN J. DUNN COAL CO.

Telephone Oakland 1550

5100 Federal Street CHICAGO

A JACKET WITHOUT SLEEVES

French Maker Devises Interesting Garment to Be Worn With Afternoon Dresses.

Many of the most important dress-makers disclaim any effort toward the sensational silhouette. To meet the demand for new styles they vary their characteristic lines by beautiful fabrics, striking colors and trimming details.

Chanel has made no basic changes in the styles which she exploits. Her dresses are straightline, many of them with beautiful embroideries. She uses laces profusely. Among her prettiest models are some frocks of flowered silks, the flowers scattered over a plain background in the form of large motifs. These silks are veiled with lace, giving an extremely pleasing effect. Several of her afternoon dresses are accompanied by little sleeveless jackets. Such models frequently carry Russian embroideries.

The greatest change in the models made by Callot is in the colorings. There is a considerable showing of paler shades of blue and rose. She has given preference to these paler hues over the rich oriental shades which she used last season. She also used many silks in pompadour effects. Other than in color Callot has demonstrated practically nothing new in the way of fashions. There are unusual variations of old themes. This designer uses embroideries, ribbons and laces even more profusely than she has in the past.

CAPE SLEEVES ARE POPULAR

Flowing Armcovering Is Shown in Many Fashion Houses; Gauntlet Cuffs Are in Evidence.

Sleeves are varied and interesting they are frequently long and fitted to the arm, and they are often absent entirely from dance frocks. They have a penchant for being long, open and hanging. Cape sleeves are popular in many fashion houses, and frequently we have the addition of a long, hanging cuff. Gauntlet cuffs appear on models in nearly all collections. Worth shows them, on a black broadcloth coat, made of bright embroidery and lined with Hudson seal. Patou's new sleeve is tight at wrist and shoulder and swells a little toward the elbow. He often adds a turned-back cuff just below the elbow. Lanvin shows an immense bishop's sleeve in softest crepe de chine.

THE LONG RIBBON STREAMERS



Radiating from the center of the crown of her hat over the brim with short lengths in front, lengthening toward the back are ribbon streamers, row upon row. At the back, the streamers reach to the very hem of the skirt, fastened in at the waistline to give an effect charming and distinctive. The dahlias which trim the crown of the hat and the girde are made of very narrow ribbon, row upon row, surrounding a tiny button.

Darkness Was Night to Chickens.

Chickens are sensible the world around. Over in Australia and New Zealand, not long ago, they went to roost when a total eclipse of the sun came on. The eclipse started in the far west, and it doubtless seemed a short working day to the mystified poultry. Theirs not to question why, however, they but to go to rest as well-behaved and healthy fowls had been accustomed ever to do.

Daily Thought.
Nothing so hard but search will find it out.—Herrick.

CUT OUT THIS SUBSCRIPTION BLANK AND MAIL IT TO

THE BROAD AX

\$1.00 FOR 6 MONTHS
\$2.00 PER YEAR

6206 S. Elizabeth Street, Chicago, Ill.

JULIUS F. TAYLOR, Please enter my name as a subscriber to THE BROAD AX. I enclose herewith Two Dollars, the annual subscriptions to same, or One Dollar for six months.

Name _____

Town _____

Date _____

19 _____

State _____

PHONE MAIN 2214

A. D. GASH

ATTORNEY AT LAW

118 N. La Salle Street
CHICAGO

Phone Main 2017

A. L. WILLIAMS

ATTORNEY AND COUNSELOR AT LAW

Suite 706 Firmenich Building
184 W. Washington St.
CHICAGO

Residence 3685 Prairie Ave.
Phone Douglas 9133

Residence, 1262 Macalister Place
Telephone Monroe 2714

MILES J. DEVINE

ATTORNEY AT LAW

Suite 318-320 Reaper Block
Clark and Washington Sts.
CHICAGO

Telephone Central 1239

Notary Public
Phones: Office Main 4153; Residence,
4751 Champlain Avenue
Phone Kenwood 5611

Walter M. Farmer

ATTORNEY AND COUNSELOR AT LAW

Suite 708—184 W. Washington St.
CHICAGO

BINGA STATE BANK

Under State Supervision

Capital \$100,000.00
Surplus 20,000.00

Offers Equal Service to All
3% INTEREST ON SAVINGS
SAFE DEPOSIT VAULTS
State Street and 36th Place

Wanted

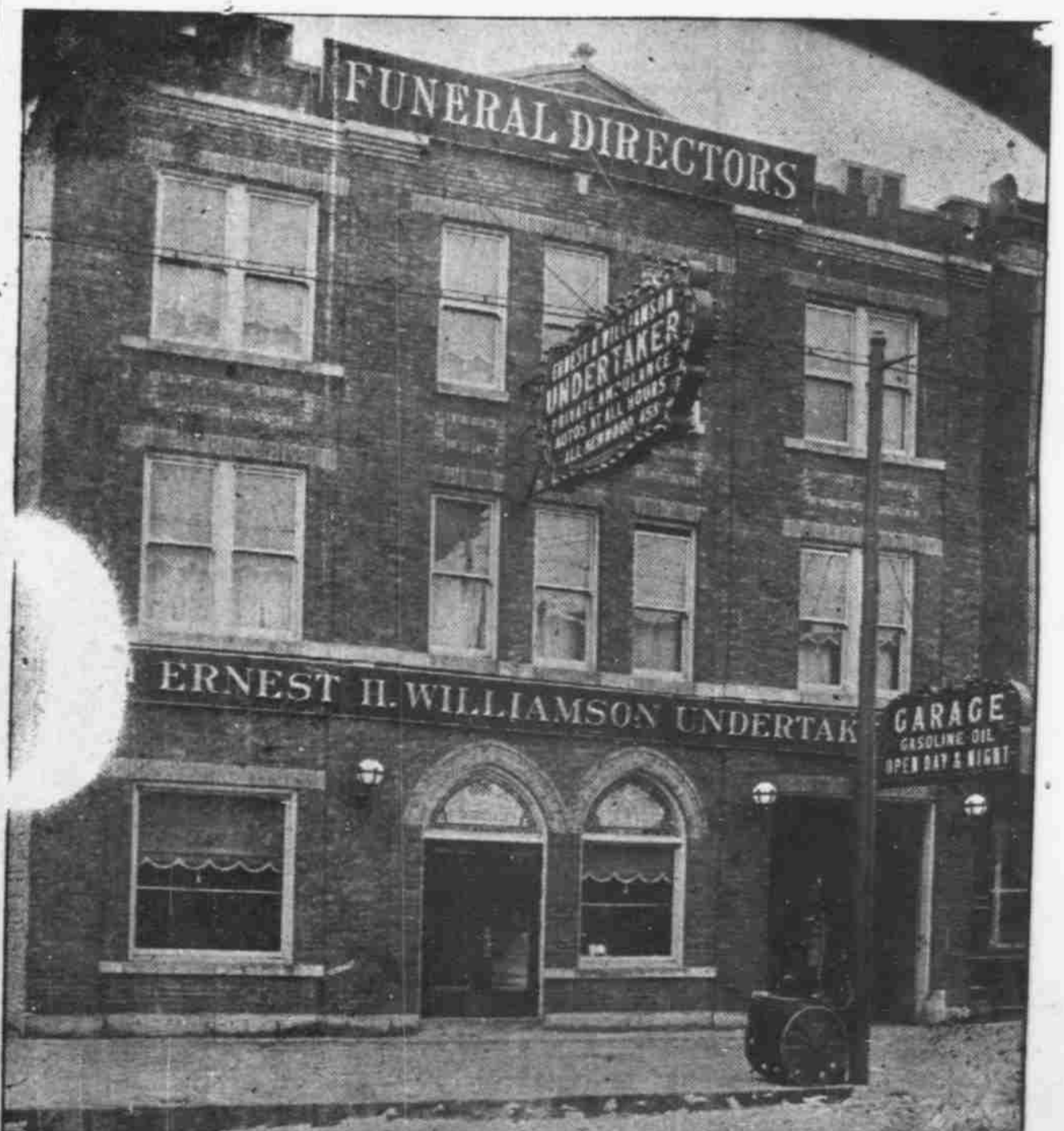
Advertising Solicitor

A live or wide awake newspaper man or solicitor can earn some easy money by calling on or addressing the undersigned.

Julius F. Taylor, 6206 S. Elizabeth Street. Phone Wentworth 2597.

PHONE KENWOOD 455

OUR NEW HOME



Ernest H. Williamson UNDERTAKER

Day Light Chapel, capacity 200, Outside Ventilation—Organ and Organist Free—I am as near as your Telephone—I give service at a reasonable price—Distance immaterial, consult me—I save you worry, time and money.

5121 & 5123 SOUTH STATE STREET

CHICAGO, ILLINOIS

West Englewood Trust & Savings Bank

CHICAGO

Capital, Surplus and Undivided Profits, \$500,000.00

OFFICERS

John Bain, President
Michael Maisel, Vice-Pres.
Edw. C. Barry, Cashier
Arthur C. Utesch, Asst. Cashier
W. Merle Fisher, Asst. Cashier and Trust Officer



The Cranford Apartment Bldg.

3600 WA ASH AVENUE

The finest building ever opened to Colored tenants in Chicago.

Steam heat, electric lights, tile baths, marble entrance

Phone Main 263 J. W. Casey, Agt. 133 W. Washington St