

# STANDARD

A Progressive Weekly

VOL. 1, NO. 5

Published Weekly 618

Chicago, Oct. 9, 1948

5¢

Read WALLACE'S  
column in THE  
STANDARD... page 4

International bankers are at it again!

# REVEAL NAZI TIES OF ERP ECONOMIC AIDE

## Dickerson wages fighting Campaign in 1st District

Earl B. Dickerson's campaign for Congress from the South Side's 1st district is moving into high gear.

• Next week Henry Wallace and his running mate, Sen. Glen H. Taylor, will speak at a rally for Dickerson in the district.

• This week a labor committee in support of his candidacy was set up by representatives of CIO, AFL, and independent unions with a total membership of more than 30,000.

• Three special canvassing days have been scheduled, on which Progressives from every part of the city will ring doorbells in the district to bring the facts in the campaign home to the voters.

• A special newspaper is being published for voters in the district with the aim of presenting the Progressive program to the widest possible audience.

• Dickerson himself started in on a strenuous schedule of

speaking engagements to kick off the campaign.

The rally which Wallace and Taylor will address is to be held in the 8th Regiment Armory, 35th and Giles, next Friday night, Oct. 15. It is one of three mass meetings at which the national Progressive candidates will appear.

Preceding the rally Young Progressives of America will hold a torchlight parade through the district, led by Taylor and Dickerson.

Master of ceremonies at the meeting will be Dr. Clifford Doyle, Progressive nominee for coroner. Mrs. Pauline Kigh Reed, candidate for secretary of

**EXCLUSIVE**  
in THE STANDARD

state, and other Progressive nominees will put in an appearance.

Sam Parks, district secretary-treasurer of the United Packinghouse Workers of America (CIO), is chairman of the new Labor Committee for Dickerson, which hopes "to place 1,000 precinct workers in the 1st district and turn out 50,000 votes for Dickerson on Nov. 2," according to Parks.

"Our union members know well the courageous fight that Dickerson waged as a member of the wartime FEPC, and his successful fight as a City Council member to win employment of Negroes on the surface lines and elevated as motormen and conductors," Parks said. "He is the type of representative that we should have in Congress."

Continued on page 7

The Marshall Plan's economic master-mind is an American who worked side-by-side with the Nazis all during World War II!

He is Thomas McKittrick, whom Paul G. Hoffman recently appointed as his chief advisor in financial and monetary matters. Hoffman is head of the Economic Cooperation Administration, which is applying the Marshall Plan to Europe.

McKittrick's astounding record of wartime collaboration with his country's enemies, which must have been known to Hoffman, has been exposed repeatedly, but the daily newspapers have suppressed almost all such exposures.

Information made available to The Illinois Standard by Rep. John A. Blatnik (D., Minn.) makes it possible for Illinois liberals to get the facts on McKittrick.

Few newspapers, for example, carried the statement by the U.S. Treasury Dept. which said: "McKittrick was president of the Bank of International Settlements (better known as BIS) throughout World War II and was doing business with the Germans while our American boys were fighting the Germans."

BIS, which is still a power in Europe, has been dominated by two men since its establishment in 1930.

One of these men is Hjalmar Schacht, Hitler's financial advisor and head of the Reichsbank, who recently was freed from war criminal charges by U.S. authorities in Germany. He

is expected to give financial advice to U.S. occupation officials.

The other is Sir Montagu Norman, former governor of the Bank of England, "who had done so much to help the Nazis prior to World War II," according to Blatnik's information.

During the war, when McKittrick was president of BIS, German Nazis controlled 72% of the bank.

One of the rare newspaper comments on BIS appeared in the New York Times of May 19, 1943. At that time the Times said:

"Allied preparations for an invasion of the European continent make the BIS at Basle, Switzerland, look still more incongruous than it ever looked since the outbreak of the war in September, 1939.

"In the seclusion of a Swiss city, American, German, French and Italian bankers... are still at work side by side and attend to common business.

"Does it mean that... all belligerents are tacitly agreed to preserve a unique shelter for what was formerly called international finance, a shelter to be eventually used at will for the purpose of a policy of appeasement?"

The U.S. and its Western allies now are following such a

Continued on page 2

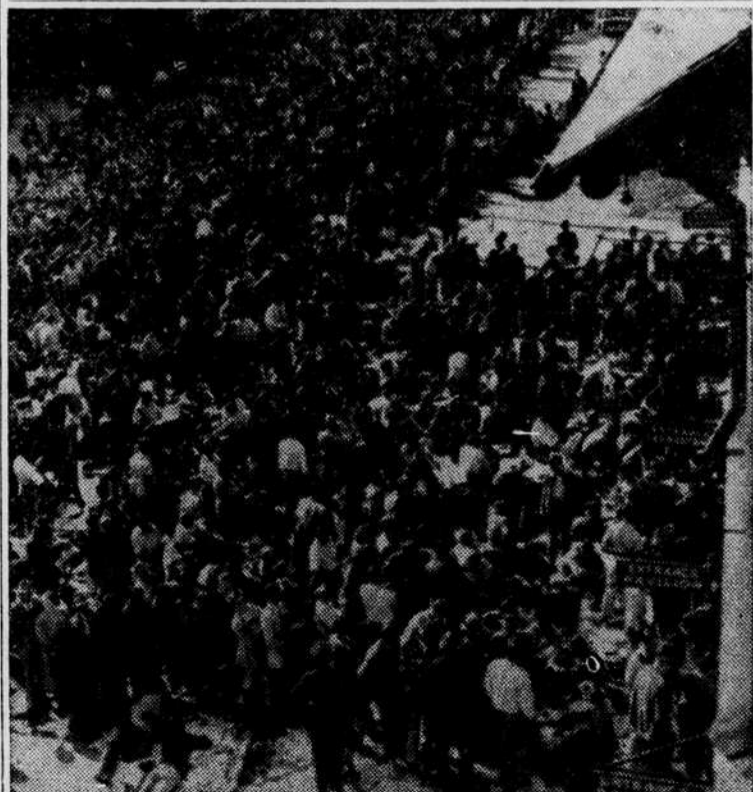
## Labor cases up for Supreme Court hearings

WASHINGTON (FP)—Many labor cases were among the several hundred matters facing the U.S. Supreme Court for decision Oct. 4 as it formally opened the 1948 fall term.

The nine justices must decide whether or not they want to hear oral argument and rule on 300 or more cases filed here during the summer recess. Among these an action by three rail brotherhoods attacking the right of Judge T. Alen Goldsborough to grant a permanent injunction against their planned strike of last July.

Other cases involve the Taft-Hartley law non-Communist affidavits, the NLRB ruling that employers must bargain on welfare funds, and various state anti-labor laws.

The high bench also has before it an appeal from the contempt-of-Congress treatment dished out by the House un-American committee to its opponents.



THIS IS NO ANGRY MOB storming the bastille. It's just part of the crowd of 3000 fans who stormed the windows at Braves Field, Boston, to buy World Series bleacher tickets for the first two games in Boston. More than 300 of them waited all night.

Sabbath endorsed by PP ..... page 2

Petition drive for Wallace ... page 3

Memphis 12-year-old speaks . page 5

Nazi-phile paper here ..... page 5

Sports by Al Vaughn ..... page 8

Features ..... pages 4 & 5