

THE GREAT PARKER SHOWS

BIGGER, GRANDER, BETTER

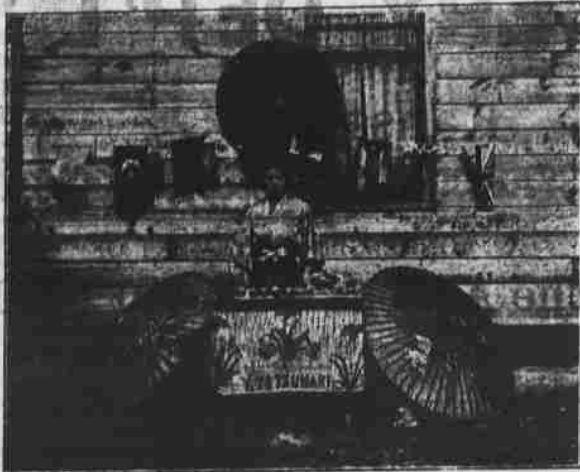
Will Exhibit in Abilene, Three Days, April 12, 13, 14, 1910

- 20 High Class Shows
- 7 Latest Riding Devices
- 5 Sensational Free Acts
- 7 Fun Factories or Joy Houses
- 2 Electric Lighting Plants
- 35 Musicians Prof. Balick's Military Band
- 15 Cage Menagerie in Animal Show
- 12 Educated Mules from 101 Ranch
- Nip, the Only Trained Buffalo



SOME OF THE FEATURE SHOWS

- "Parker's Jungle," or Trained Animal Show
- "Japanese Village," 18 Vaudeville Artists
- "Show Girls" 20 People in High Class Musical Comedy.
- "Show Beautiful," Featuring "Lotta" with 15 Pretty Girls
- "Jubilee Singers," 25 Foremost Colored Performers.
- "Parker's Side Show," Superior to the Very Best
- "Parker's Annex," Home of the World's Strangest Freaks
- "Pearl and Jennie," Strangest Pair on Earth.



WITH THE JAPANESE VILLAGE



IN THE PARKER JUNGLE SHOW



C. W. PARKER, FOUNDER



WITH THE SHOW "BEAUTIFUL"



PARKER MILITARY BAND

TWO GET PROMOTIONS.

Father Horgan Goes to Solomon, Father O'Reilly Comes Here.

Father D. Horgan, who has been priest of St. Andrew's church, has been transferred to the Solomon church, which has a larger congregation. Father Horgan has won a host of friends by his devotion to duty and his unfailing courtesy and kindness. Many friends will be sorry to have him leave.

The new priest at St. Andrew's will be Father Thomas O'Reilly who has been stationed at Elmo. He has won a fine standing as a successful and popular priest and will be welcomed here. He will take charge this week and will conduct services next Sunday.

WENT TO CONVENTION.

Sunday School Workers Off for the Big Meeting.

Secretary J. H. Engle, Treasurer R. M. White, Supt. W. D. Stem, County President J. C. Entz and about 100 Sunday school workers of the county left for Kansas City, Kansas, to attend the state convention. It promises to be one of the most interesting ever held and 3000 delegates are expected to attend. Mr. Engle and Mr. Stem will make several addresses.

These were the delegates who went from Hope: Dr. and Mrs. J. C. Entz, Mr. and Mrs. J. S. Meek, Mrs. Fisk, Mrs. Koch, Mrs. Speer, Rev. Mr. Campbell, Mrs. Musser, Mary Meull, A. L. Evers, E. Moninger, Lola Mosley.

Recital at Talmage.

The entertainment given under the auspices of the Talmage school by Miss Florence Knight and Miss Winifred Tanner at the Talmage hall Saturday evening was very much appreciated by all who attended. Miss Knight, the elocution instructor of the county high school, is a very pleasing reader. Every selection was splendidly given. Miss Tanner is a soloist of marked ability and pleased the audience very much, not only by her excellent rendition, but also by her choice of selections. She was assisted by Mr. Dean McKelhenney in a duet, and Miss Vera Martz, accompanist, both of the county high school. The entertainment was first class in every respect and a rare treat for the Talmage people.

AMONG CLUB WOMEN.

The State Federation banquet will be served on the evening of April 26. Tickets will be \$1.

The Coterie club will meet with Miss Marie Augustine this evening.

Two girls attending the University of Kansas are furnished financial aid of the state federation of women's clubs, who have lately established a fund to aid working girls to get a college education. The association of college alumnae, when it established a small scholarship for upper class girls last spring, discovered that there was a number of senior girls in the university who would not be able to remain in school for graduation unless they should have financial aid. Many of these girls had practically worked their way through the university, but did not have money to pay the expenses of graduation.

The Columbian club will meet tomorrow afternoon with Miss McShea at Chapman. These having cars will make the trip in them, others will go down the train, returning on the flyer. Miss McShea extends an urgent invitation to all the club to partake of her hospitality in the evening. The program is: Music, Miss McShea; Roll call, name of artist; Most famous Italian painter, Mrs. Johns; Raphael in his relation to Michael Angelo, Mrs. Parent; Rembrandt, man, painter and poet, Mrs. Taylor; The Madonnas, Group V; current events, parliamentary drill.

Club women are anticipating the publication of Mrs. W. A. McCarter's novel to come from the press in the early fall. Already club programs are containing a discussion of "The Price of the Prairie," which is the title of Mrs. Carter's book, as one feature of Kansas programs.

The Hawthorne club of Chapman gave an entertainment in Scanlon's hall Wednesday evening with a large attendance. The club members gave a clever farce, "The Spinster's Return" and Prof. Steininger's orchestra furnished music. The proceeds went to the scholarship fund.

Mrs. Baber, president of the Fifth district takes great pride in being able to report a new club, organized

In a country neighborhood not far from Manhattan. It has been christened, "The Riverside Club" Mrs. Carrie Shumway was chosen president. There are thirty members who have voted to join the State Federation. There is a whole souled enthusiasm in the country clubs that may well be copied by the older clubs, who in many instances seem to have settled into ruts which require little short of an earthquake to dislodge them, we wish it were practicable to "exchange calls" on club days as the new members would surely be a benefit to us.—Mrs. Gaddard.

Miss Curry's School Closes. Pearl, April 2.—The Walnut Grove school three miles south of Pearl had its closing exercises yesterday afternoon. The teacher, Miss Cecil Curry, of Abilene, had charge of the program which was one of the best in



Miss Cecil Curry.

the school's history. A bounteous dinner was given yesterday noon in honor of Miss Curry. Miss Curry's work has been very satisfactory and has won a host of friends in this community. This was her first term as a teacher.

Presbyterial Society to Meet. The Woman's Presbyterial society of the Solomon Presbytery will meet at Minneapolis April 12 and 13. Mrs. Ward Davis is secretary and Mrs. S. M. Hale, president of the society.

Eggs For Sale. From full blood Barred Plymouth Rocks, 75 cents per setting of 15 eggs; 50 eggs \$1.25; one-half mile north of Anna, route 2, Brown phone 1200. Mrs. Geo. A. Slater, Abilene, Kansas. 21647

Notice to Delinquent Tax Payers

DICKINSON COUNTY

Office of the County Treasurer, Dickinson County, Kansas
Abilene, Kansas, April 1, 1910.

Notice is hereby given that the following is a list of lands, city and town lots, situated in the County of Dickinson and state of Kansas, sold on the 3rd day of September, 1907, for the unpaid taxes of 1906 and unredeemed on the above mentioned date; containing names of persons to whom same were assessed, whenever such names appears on the assessment and tax rolls, and the amount of taxes due on each parcel of land with interest thereon, calculated to and including the 3rd day of September, 1910, and that unless such lands and lots are redeemed on or before the said 3rd day of September, 1910, that being the last day of redemption allowed by law, they will be subject to deeds.

E. L. MORSE, Deputy.

F. W. MORSE, County Treasurer.

Section	Township	Range	Acres	Amount	and w/2 of 7th st. and 1/2 of Cedar st. and all of 6th st. abutting
12	16	4	2	4 05	Geo. McClave lots 3, 10, 14, 15, 18, 19, 20, 21, 22, 23, 24, 25, 26, 27, 28, 29, 30, 31, 32, 33, 34, 35, 36, 37, 38, 39, 40, 41, 42, 43, 44, 45, 46, 47, 48, 49, 50, 51, 52, 53, 54, 55, 56, 57, 58, 59, 60, 61, 62, 63, 64, 65, 66, 67, 68, 69, 70, 71, 72, 73, 74, 75, 76, 77, 78, 79, 80, 81, 82, 83, 84, 85, 86, 87, 88, 89, 90, 91, 92, 93, 94, 95, 96, 97, 98, 99, 100
GRANT TOWNSHIP					
JEFFERSON TOWNSHIP					
CENTER TOWNSHIP					
HOPE TOWNSHIP					
NOBLE TOWNSHIP					
LYON TOWNSHIP					
HERINGTON TOWN CO.					
MANCHESTER					
SOLOMON					
CARLTON					
BANNER CITY					
ENTERPRISE					
HOPE CITY					

F. A. Klover 25 by 30 ft w center end of lot 2, blk 6	24
Thurstin & Swayze's Add	
Wesley Swayze all blk F	1 04
I. C. Grovier a 10 ft. lot 2, blk 17	50
Henquenet's Add	
A. Henquenet 15 ft. between lots 5 and 9, blk 1	14 22
J. Hoffman lot 7, blk 8	54
J. P. Rumold lot 11, blk 7	50
Shore's Add	
Jas. B. Haley lot 3, blk 12	54
CHAPMAN	
S. Rexroat south 1/2 blk 8	9 12
J. A. Colley pt. lot 18, blk 12	14 52
J. J. Ryan lots 3, 4, blk 14	20 41
Eliza Chime east 1/2 blk 21	14 02
Sheeran's First Add.	
Hannah Howe lots 2, 5, blk 6	36 26
J. J. O'Brien lots 4, 5, blk 6	12 29
Sheeran's Fourth Add.	
K. B. Sheeran all blk 6	2 52
Sheeran's Fifth Add.	
Jas. Sheeran lots 5, 6, 7, 8, blk 2	2 22
HERINGTON	
H. A. Mitchell lots 1, 2, blk 12	26 50
Della Ruthrauff beg. 29 1/2 ft w of se cor blk 15, w 29 1/2 ft. n 118 ft. e 29 1/2 ft. south to beg. A. Czarnowsky lots 10, 12, blk 43	51 12
T. Fluh lots 18, 20, blk 46	3 05
G. A. Wohlgemut lots 15, 15, blk 52	10 24
W. H. Berger lot 14, blk 55	69
Gertrude Collins lots 3, 7, 9, blk 51	
M. J. Mullin saw cor blk 120	68 24
Joe Peters lots 10, 12, blk 123	11 27
Luce & Wilson's Add.	
Belle St. Amidan lots 1, 2, 5, 7, 9, 11, blk 175	2 52
Luce Estate lots 25, 25, blk 176	52
Thompson's Add.	
H. J. Ashley lots 10, 12, blk 1	41 28
Creesh's 2nd Add.	
J. F. Fall lots 30, 32, blk 148	9 27
G. Stoffus, lots 21, 22, blk 149	4 03
Murray's Add.	
F. L. Carby, lot 22, 24, blk 2	1 40
Shepherd's Add.	
J. E. Anderson lots 19, 21, 23, a 17, blk 7	14 52
H. L. Thompson's Add. (Not in City)	
J. Patten, lots 12, 15, 17	5 23
ABILENE	
Jay Olney lots 9-10, blk 3	17 38
Southwick & Augustine	
First African Church of Abilene lot 101, Spruce st.	7 78
Kuney & Hodges' Add.	
Evangelical church, lots 25, 26, blk 25	29 43
Rice & Austin	
A. L. Van Ostrand lot 2, blk 111	11 30
Lebel's First Add.	
H. Southworth all lot 8 n of creek except 200 ft.	5 70
Fisher's Add.	
United Brethren church lots 7, 8 blk 5	20 50
Highland Add.	
Unknown, lot 16, blk 20	50
Fairview Add.	
O. L. Darling, lots 21, 23, 24, blk 37	1 22
Boston Heights Add.	
4 1/2 lot 8, blk 25	40
Lots in section 14-15-2	
J. W. Bailey beg 505 ft n and 250 ft w of se cor 16-15-2, n 265 ft 10 U. P. R. of W. thence ne along N. of W. 102 ft to a point w of a line of 16-15-2 thence s 25 ft, w 25 ft, s 22 1/2 ft, w 167 to beg.	7 00
Kerr A. Cox beg 450 ft n and 125 ft w of se cor 12-15-2, n 125 ft, w 35 ft, s 125 ft, w 25 ft to beg.	3 20
J. H. Edwards beg 225 ft n and 200 ft w of se cor 16-15-2, n 200 ft, w 25 ft, s 200 ft, w 25 ft to beg.	5 21
Kirby's Add.	
A. H. Hinton lot 15, blk 23	52