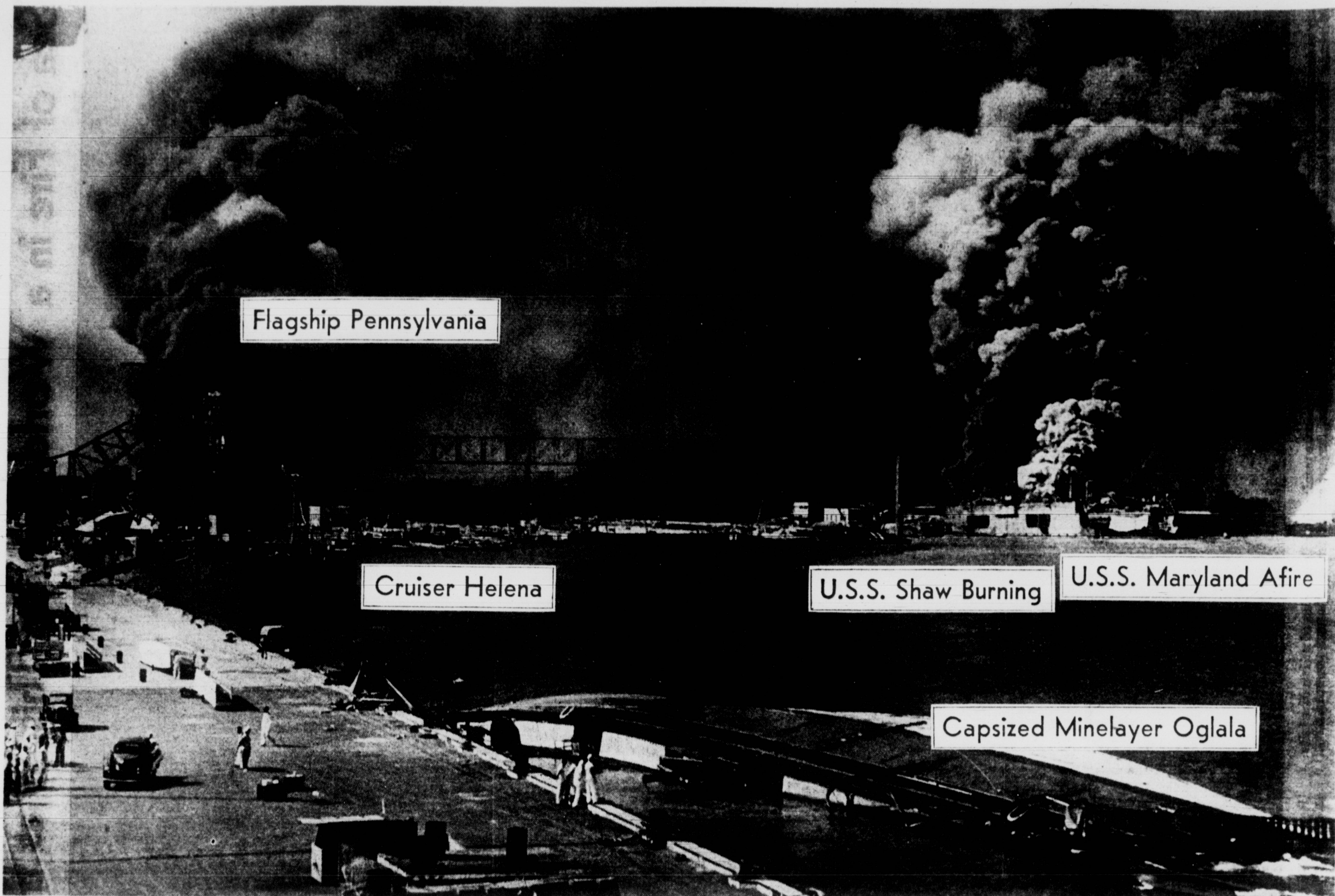


Pearl Harbor in the Noonday Sun, Its Ships Capsized and Afire



Flagship Pennsylvania

Cruiser Helena

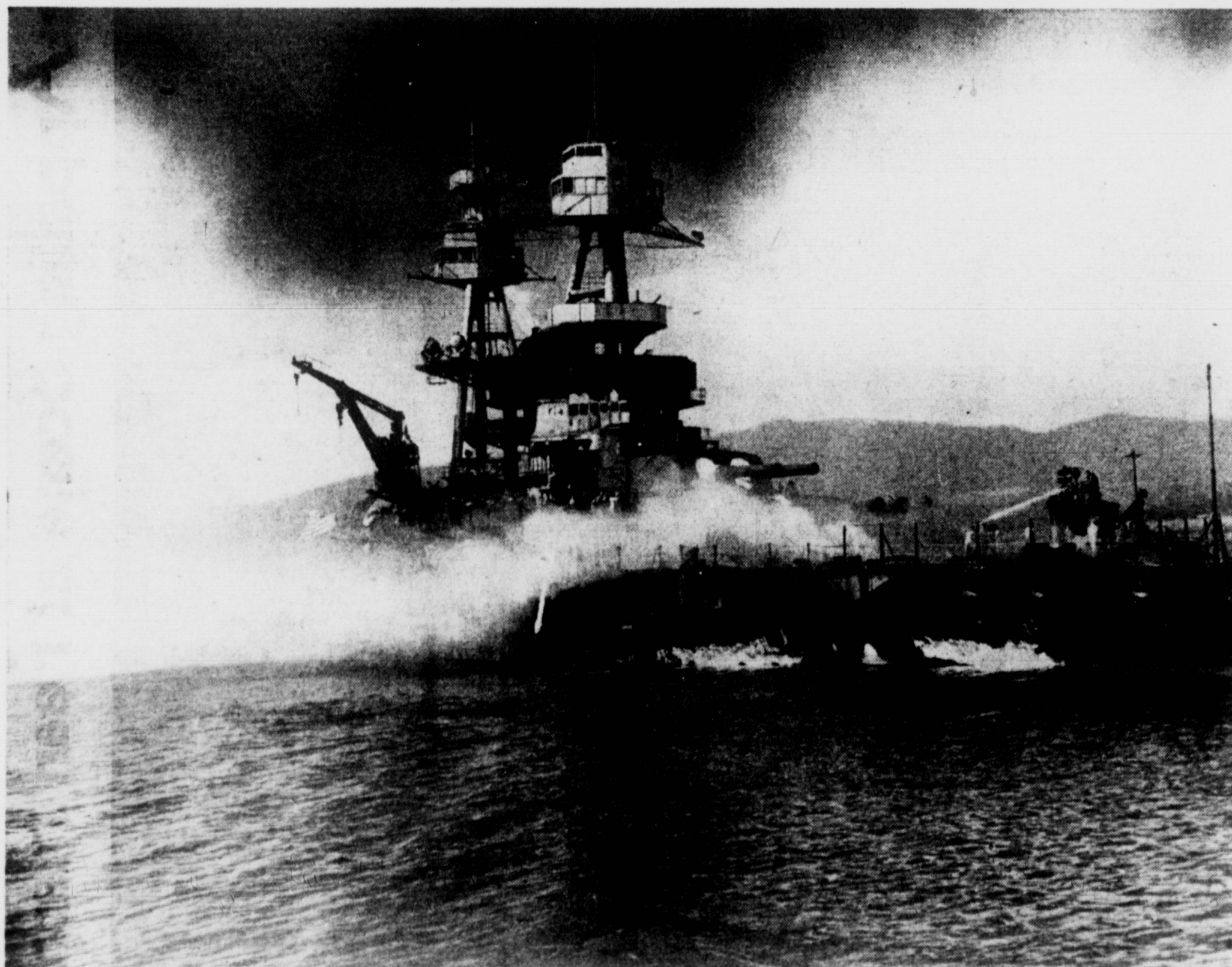
U.S.S. Shaw Burning

U.S.S. Maryland Afire

Capsized Minelayer Oglala

—Photo by U. S. Navy, Distributed by International News Photos.

A general view of Pearl Harbor last December 7 after the sun had climbed high and brought quiet, if not peace. Harassed crews still fought fires on most of the 19 vessels sunk or damaged, tried to repair war planes.



A naval tug trying to put out bomb-set fires aboard the U. S. S. Nevada, resting on Pearl Harbor's bottom. This battle-

ship was of 29,000 tons, was commissioned in 1914 but had been modernized with new guns and tripod masts in recent years.



—Photo by U. S. Navy, Distributed by International News Photos.

Pearl Harbor's Drydock No. 1, destroyers *Downes* (left) and *Cassin* lying in ruins. To the rear is U. S. S. *Pennsylvania*, flagship of the fleet, bombed out of commission but damaged probably less than other battleships.