

"BIG DITCH" NOW ALMOST COMPLETE

Removal of Gamboa Dike Means End of Work Is Near.

WATERS OF OCEANS MEET

First Steps Are Taken Toward Destruction of Big Embankment Which Holds Gatun Lake Out of Culebra Cut.

Colon, Panama, Oct. 1.—The climax of nine years of untiring work on the part of the men who have been building the Panama canal came today when the waters of Gatun lake were permitted to run for the first time into the Culebra cut. This simple operation marked the virtual completion of the great isthmian waterway.

spite unforeseen difficulties that have beset them at every hand. Goethals to Make Final Test. The first vessel to pass through the canal probably will be a boat of the isthmian canal commission.

Culebra Cut Caused Trouble. The excavation of the Culebra cut, into which the water has just been turned, has been one of the engineering feats connected with the building of the canal.

The final destruction of the big dike is scheduled for October 10, when charges of dynamite placed in holes already drilled in the dike will be exploded.

World Gives Goethals Credit. To Col. George Goethals, chairman of the isthmian canal commission, chief engineer of the commission and governor of the canal zone, the world will give the credit for the successful completion of the Panama canal.

Under Colonel Goethals the greater part of the \$375,000,000 which the canal will have cost when it is completed has been spent. It has been by far the costliest engineering project in the world.

PYTHIAN KNIGHTS PLAN CELEBRATION

THIRTY-SIX LODGES TO TAKE PART IN THE GOLDEN JUBILEE.

WILL DEDICATE NEW TEMPLE

Ceremonies to Take Place in Detroit on November 12—Initiation of Candidates at Damon Castle.

Lansing.—Arrangements for a golden jubilee to be held in Detroit by 36 lodges in lower Michigan on November 12, in honor of the founding in the United States of the Knights of Pythias, were made at a meeting of the general committee and the various branch committees in charge of the celebration.

Alton May Head State Druggists.

The nominating committee of the Michigan State Pharmaceutical association has arranged the following ticket for the annual meeting beginning in Grand Rapids: President—D. D. Alton, Fremont; D. G. Look, Lowell; F. E. Peters, Davidson.

National Baptist Congress.

The program of the National Baptist congress, which will be held in Grand Rapids November 11-13, was received here.

To Evict Striking Miners.

Eviction of the striking copper miners from the Copper Range Consolidated Mining company's houses was made possible by legal proceedings brought before the Houghton county circuit court commissioner, the jury decided that a striker had violated his company contract by refusing to work.

Will Expel for Hazing at University.

"Haze, and you leave college," was the ultimatum issued by the student council of the University of Michigan. The student council is a group of men chosen by the student body for its government in so far as self-government is permissible.

FEMALE MAKES THE TROUBLE

Certainly in the Case of the Mosquito They Are "More Deadly Than the Male."

The attention of many of our citizens who hitherto have taken little interest in entomological investigation has been attracted to what they believe is a new variety of mosquito, a mosquito which in the course of evolution has lost its bark, but not its bite; that comes upon us unawares without a musical accompaniment.

Eye Alone Detects Icebergs. There at present is no absolute method of detecting icebergs, except Captain C. E. Johnson and A. S. Gamble of the cutters Seneca and Miami, which patrolled the route of the transatlantic liners from April to May.

Real Excitement.

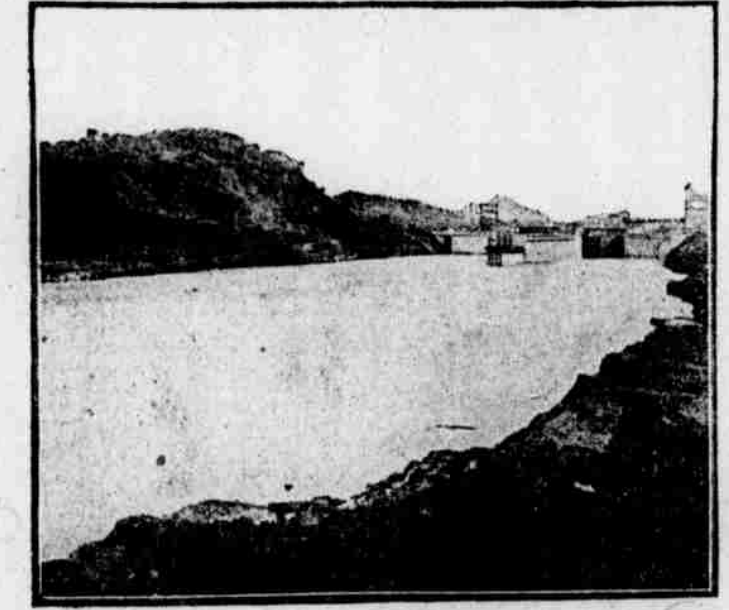
"Yes," said the meek-looking man, "I've no doubt you've had some great hunting experiences in your travels abroad."

Not Mercenary.

"I have a friend who just married for money."

DIDN'T KNOW

So common is the use of coffee as a beverage, many do not know that it is the cause of many obscure ailments. The easiest way to find out for oneself is to quit the coffee for a while, at least, and note results.



This picture gives a view of the great expanse of water now gradually filling the Panama canal, which is almost ready for the admission of the big ships.

and the great locks have been constructed. The work that remains to be done is largely detail, and is but child's play as compared with that which has been done.

The fact that the canal stands practically complete more than a year before the time originally set as the date for its completion is one of the remarkable features of the work.

dreages floating on the waters of the canal, and will not interfere with navigation of the waterway by such boats as may be allowed to pass through.

Immense Artificial Lake Created. Gatun lake, the waters of which are now flowing into the Culebra cut, is the pivotal point about which the entire canal system revolves.

At the northern end of the lake is the Gatun dam, which is in reality an artificial ridge more than a mile and a half long.

Of course, there have been many attempted robberies, but only once, in the year 1862, were thieves successful in obtaining any of the paper.

Reading Between the Lines.

To get the good of the library in the school of life you must bring into it something better than a mere bookish taste. You must bring the power to read between the lines, behind the words, beyond the horizon of the printed page.