

Marriage Licenses.

Conrad Loos and Annie Bock.

From Fruitland.

EDITOR HERALD:

As it has been some time since I wrote to your paper, I will again try to find a little news.

Well, the election is over; let us go to work and try and uphold the men that are elected so long as they will work for the good of humanity and for the upbuilding of our government.

Uncle Dave Clodfelter and wife of Illinois are visiting relatives and friends in this vicinity for a while.

Geo. Baker is now painting at Pocahontas.

Dean Ware is on the sick list.

Corn gathering is the go now and the crop is pretty good.

SCRIBBLER.

Lodge Directory.

The Tribe Ben Hur meets in the A. O. U. W. hall the second and fourth Monday nights of each month at 8 o'clock. Chas. Hurst, chief; J. R. Watkins, scribe.

The Tent of the Maccabees meets in the A. O. U. W. hall the second and fourth Tuesday nights of each month at 8 o'clock. Jos. Milde, commander; A. E. Williams, secretary.

The Jackson A. O. U. W. No. 138 meets the first and third Wednesday nights of each month at 8 o'clock. Chas. Daley, master Workman; F. W. Bouckeman, recorder.

The Fraternal Order of Colonial meets in the A. O. U. W. hall the first and third Thursday nights of each month at 8 o'clock. B. F. Lusk, president; A. C. Schmuke, secretary.

A Startling Test.

To save a life, Dr. T. G. Merritt of Mehoopany, Pa., made a startling test resulting in a wonderful cure. He writes, "a patient was attacked with violent hemorrhages, caused by ulceration of the stomach. I had often found Electric Bitters excellent for acute stomach and liver troubles so I prescribed them. The patient gained from the first, and has not had an attack in 14 months." Electric Bitters are positively guaranteed for dyspepsia, indigestion, constipation and kidney troubles. Try them. Only 50c. For sale by DR. S. E. WOODS, the Druggist.

Attention Tax-payers.

The undersigned, collector of the revenue of Cape Girardeau county, Missouri, will meet the tax-payers of said county for the purpose of receiving the taxes for the year 1904 at the following times and places:

Alleenville, Huble, Thur. Nov. 10
Dutchtown, Fri. " 11
Gordonville, Sat. " 12
Egypt Mills, Randol, Mon. " 13
Cape Girardeau, Cape Gir., Tuesday, Nov. 14th, Wed., Nov. 15, Thurs., Nov. 16th.

From November 16 to Jan 1, 1905, at the Collector's office in Jackson.

Notice is hereby given that all of those who fail to pay their taxes at the times and places as above may expect to have their property seized, levied upon and sold for payment of the same with costs. Back Tax Books will not be taken with me; those desiring to pay back taxes, will find the books at my office in Jackson.

LEE HART,

Collector of the Revenue.

THE SOUTHWEST IS PROSPERING

Arkansas, Texas and Louisiana full of Opportunities for persons of Small Means.

LOW RATES FOR HOMESEEKERS.

No section of the country is more prosperous than the Southwest. No section is showing such gains in wealth and population and no other section offers the opportunities for securing homes and making a start in the world as are to be found in the Southwest.

With cheap lands and fertile soil that will grow anything raised in the North, is the added attraction of a mild even climate.

Live cheaper, make more and save more—surround yourself with more comforts.

Write for our descriptive literature—tells all about that great country—and let us help you find a location.

Very low round trip rates via Cotton Belt Route, one fare plus \$2, on first and third Tuesdays of each month to points in Arkansas, Louisiana and Texas.

J. H. Dumm, Agent, Delta, Mo.
E. W. LaBAUME, G. P. & T. A., Cotton Belt Route, St. Louis, Mo.



Miltenberger & Company.

Now is the time to buy Fall goods and we have a full and complete stock of all kinds. Men's Belt back Overcoats and other styles. Ulsters and regulation length at low prices for quality.

Fleisher's Shetland Floss

at 70 cents a box.

Imported Saxony Yarn

the kind that sells at 10 cents a skein at 5 cents.

A Good L. L. Bro. Muslin

36 inches wide at 5 cents.

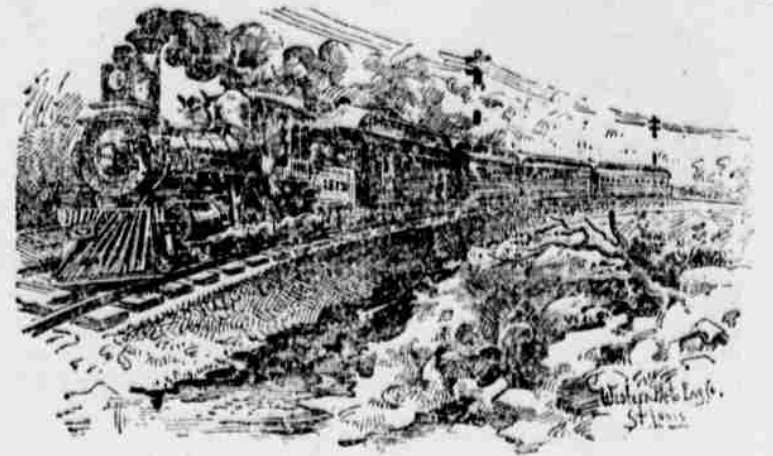
This is a season for plain clothes and we have a full and varied assortment. Twilled back Broadcloth in all colors worth \$1.25 at \$1.00. Quality can not be equaled for price in town.

Shoes.

For Shoes that wear and good values for money we still maintain that reputation and are always striving to get better values for the money.

Up-to-date line of ladies' and children's Cloaks and Jackets.

G. MILTENBERGER & COMPANY,
JACKSON, MO.



TAKE THE IRON MOUNTAIN ROUTE.

St. Louis, Cairo and all points north and east. Connections made in St. Louis and Cairo with through express trains for Chicago, Cincinnati, Louisville, Indianapolis, Cleveland, Detroit, Buffalo, New York, Philadelphia, Boston, Washington and all principal eastern cities. Pullman Buffet Sleeping Cars to all points.

ONLY ONE CHANGE OF CARS TO SAN FRANCISCO.

Solid trains to Galveston, Houston, Dallas, Fort Worth, San Antonio and all Texas points. Only route to Hot Springs, Ark.

H. C. TOWNSEND, G. P. & T. A., St. Louis, Mo.

Jackson Branch, Iron Mountain.

STATIONS.	Going South. Leaves.			Going North. Arrives.		
	Freight. No. 61.	Passngr. No. 39.	Passngr. No. 41.	Freight. No. 60.	Passngr. No. 38.	Passngr. No. 40.
Jackson.....	8:00am	11:55pm	2:10pm	11:40am	2:00pm	4:00pm
Gordonville.....	8:30 "	12:10 "	2:20 "	11:05 "	1:44 "	3:44 "
Dutchtown.....	8:35 "	12:24 "	2:30 "	10:45 "	1:30 "	3:30 "
Alleenville.....	9:15 "	12:48 "	3:00 "	10:10 "	1:10 "	3:10 "

Frisco System.

TRAINS DEPART.

No. 22	Daily for Ste. Genevieve, St. Marys, St. Louis and intermediate points	5:00 A. M.
No. 12	Daily for Ste. Genevieve, St. Marys, St. Louis and intermediate points	12:15 P. M.
No. 11	Daily for Memphis, Tenn., Caruthersville, Sikeston and intermediate points	1:35 P. M.
No. 111	Daily for Bloomfield, Puxico, Poplar Bluff, Naylor, Pocahontas, Walnut Ridge, Hoxie and Delta	1:45 P. M.
No. 107	Daily except Sunday for Delta, Bloomfield, Taskee and intermediate points	6:30 A. M.
No. 211	Daily for Commerce, Benton, Morley, Morehouse, Malden, Kennett, Leachville	2:10 P. M.
No. 213	Daily for Thebes and Chicago	1:20 P. M.

TRAINS ARRIVE.

No. 21	Daily from St. Louis, St. Marys and Ste. Genevieve	10:00 P. M.
No. 11	Daily from St. Louis, St. Marys and Ste. Genevieve	1:15 P. M.
No. 12	Daily from Memphis, Tenn., Caruthersville, Sikeston and intermediate points	11:55 A. M.
No. 112	Daily from Hoxie, Walnut Ridge, Pocahontas, Naylor, Poplar Bluff, Puxico, Bloomfield and Delta	12:10 P. M.
No. 108	Daily except Sunday from Taskee, Bloomfield, Delta and intermediate points	5:15 P. M.
No. 212	Daily from Leachville, Kennett, Malden, Morehouse, Morley, Commerce and Benton	11:35 A. M.
No. 214	Daily from Chicago and Thebes	3:25 P. M.

W. R. POWE,
General Passenger Agent.

J. F. NEAL,
Ticket Agent.



Before You Purchase Any Other Write THE NEW HOME SEWING MACHINE COMPANY ORANGE, MASS.

Many Sewing Machines are made to sell regardless of quality, but the "New Home" is made to wear. Our guarantee never runs out. We make Sewing Machines to suit all conditions of the trade. The "New Home" stands at the head of all High-grade family sewing machines. Sold by authorized dealers only.

FOR SALE BY JACKSON STORE CO.

\$1.00

Purchases a \$3.00 Pen.

THE CELTRIC

Mode 12 FOUNTAIN PEN

Is constructed strictly on merit, and is equal, if not superior to any \$3.00 pen on the market to-day. It is richly enameled, writes fluently and is guaranteed not to leak.

\$1.00

is a small sum to invest in a high grade Fountain Pen which with ordinary care will last a lifetime.

OUR GUARANTEE:

THE PEN IS SOLID GOLD, guaranteed finest grade 14k, and is made of the best quality rubber in four parts.

SENT PREPAID

upon receipt of \$1.00 to any address in the United States and Canada. If upon examination you are not entirely satisfied or you do not think the pen is worth \$1.00, return it to us and we will cheerfully refund the money.

ORDER TODAY, and name the paper you saw this advertisement in.

ADDRESS: THE SELDEN PEN MFG. CO., 140 Nassau St. New York.

FRISCO SYSTEM.
ST. LOUIS, MEMPHIS & SOUTHEASTERN.
ST. LOUIS & GULF.

Louisiana Purchase Exposition

Through the Picturesque Mississippi Valley, Skirting the Great Mississippi for One Hundred Miles, Presenting a Continuous Panorama of Natural Beauty.

SEASON TICKETS
GOOD TO DECEMBER 15
FROM CAPE GIRARDEAU - \$6.35

SIXTY DAY TICKETS
FROM CAPE GIRARDEAU - \$5.30

FIFTEEN DAY TICKETS
FROM CAPE GIRARDEAU - \$4.75

For further particulars and descriptive literature, call on nearest agent or address

W. R. POWE,
General Passenger Agent,
Cape Girardeau, Mo.

Strawberry and Vegetable Dealers.

The Passenger Department of the Illinois Central Railroad Company have recently issued a publication known as Circular No. 12, in which is described the

Best Territory in this Country

for the growing of early strawberries and early vegetables. Every dealer in such products should address a postal card to the undersigned at Dubuque, Iowa, requesting a copy of "Circular No. 12."

J. F. MERRY,
Asst. Gen'l Pass'r. Agent.

WANTED—Special representative in this county and adjoining territories to represent and advertise an old established business house of solid financial standing. Salary \$21 weekly with expenses, paid each Monday by check direct from headquarters. Expenses advanced; position permanent. We furnish everything. Address, The Columbia, 630 Monon Building, Chicago, Ill.

The Christmas Delineator.

The December Delineator, with its message of good cheer and helpfulness, will be welcomed in every home. The fashion pages are unusually attractive, illustrating and describing the very latest modes in a way to make their construction during the busy festive season a pleasure instead of a task, and the literary and pictorial features are of a rare excellence. A selection of love songs from the Wagner operas, rendered into English by Richard de Galliene and beautifully illustrated in colors by J. C. Leyendecker, occupies a prominent place, and a chapter in the Composers' series, relating the romance of Wagner and Cosima, is an interesting supplement to the lyrics. A very clever paper entitled "The Court Circles of the Republic," describes some unique phases of Washington social life from an unnamed contributor, who is said to write from the inner circles of society. There are short stories from the pens of F. Hopkinson Smith, Robert Grant, Alice Brown, Mary Stewart Cutting and Elmore Elliott Peake, and such interesting writers as Julia Magruder, L. Frank Baum, and Grace MacGowan Cooke hold the attention of the children. Many Christmas suggestions are given in needlework and the cookery pages are replete with the Christmas feast. In addition, there are the regular departments of the magazine, with many special articles on topics relating to woman's interests within and without the home.

5¢

GOLD BRICK
SCOURING SOAP
THE ALL AROUND CLEANER

"THE SCOUR OF THE HOUR"

The Best Scouring Soap on the Market
For General All Around Cleaning
AT ALL GROCERS
MADE BY CAPE CITY SOAP WORKS - CAPE GIRARDEAU