

ANNOUNCEMENTS.

We are authorized to announce HON. JOHN E. RANKIN for re-election to Congress from the First Congressional District of Mississippi, subject to the action of the Democratic party.

FOR CIRCUIT JUDGE.

FIRST JUDICIAL DISTRICT,
HON. JOHN H. MITCHELL,
of Pontotoc County.

FIRST JUDICIAL DISTRICT,
HON. C. P. LONG,
of Lee County.

Just a few of the old veterans who braved the rough times of the 60's assembled in Starkville Easter Sunday, according to a custom that has been in vogue among the old soldiers of Oktibeha county for several years past. Each year their number will become fewer until within a score or more years there will be none left to continue this beautiful custom.

"Hate" is the title of a pamphlet that has been sent out by the H. D. Stephens committee as a campaign document. The pamphlet contains criticisms which Vardaman's Weekly has made of the Wilson administration. The impression is sought to be made that these criticisms were actuated by personal hatred of Mr. Wilson as it was indulged in by ex-Senator Vardaman. The criticisms were given publicity through the columns of Vardaman's Weekly, and it would seem that Mr. Stephens is strengthening the Vardaman cause by giving them wider publicity.

The suit against Gov. Russell filed in the Jackson Division of the Federal Court by Miss Birkhead for alleged seduction was thrown out of the court by Judge Edwin Holmes for want of jurisdiction, Tuesday. Gov. Russell claimed citizenship at Oxford in the Northern District of the state. Many think the case will be dropped, as it is alleged the suit was instituted to injure the governor politically and to influence legislation that he opposed in the interest of the trusts. The trusts failed to get the legislation they desired. The governor has not been injured politically, and now everybody devoutly hopes the scandalous proceedings are at an end, because the people desire only equitable laws as between them and the trusts and the fair name of their state not to be smirched through dark schemes of unscrupulous politicians.

Just to Remind You.

On "Mothers' Day" last year one of our forgetful girls received a silent reproof when the florist delivered to her mother a box of lovely ferns and plants with the cards of two of the girls best friends—motherless girls, by the way.

We who are so fortunate as to have mother with us should need no reminder to send her an offering of posies on Mothers' Day. She will appreciate flowers, but don't you stop with the things that money can buy. Much more precious to her mother's heart are those little expressions of affection which cannot be measured in dollars and cents. Slip your arms around her neck and with her cheek to yours, tell her that she is the dearest, sweetest, best mother in all the world. You may write that on her tombstone later, but she would rather hear you say it now.

Don't forget that May 14th is Mother's Day.—I. C. Magazine.

When her son was sentenced to 20 years imprisonment for robbery Mrs. Hannah Donovan, of New York, climbed to the top of a house and jumped off. Her life work of raising a son had failed. She did not want to live any longer. It is always the parent that pays the penalty for the son's crime.—Mobile Register.

And if the son had been brought up in the fear and admonition of the Lord, the penalty is a miscarriage of justice.

A law was passed by the last session of the legislature forbidding supervisors to make contract with or purchase supplies from any one related to a member by blood or marriage within the third degree except if such person secures the contract by lowest competitive bidding.

Illinois Central System Clears Up Point About Railway Net Income.

The net railway operating income of the Class I railroads of the United States for 1921 was at the rate of 3.31 per cent upon their tentative valuation as established by the Interstate Commerce Commission for rate making purposes. Many have construed this to mean that the railroads realize a net income of 3.31 per cent available for dividends, enlargements and improvements. This is far from being true. There is a great difference between "net railway operating income" and "net income."

Accounting methods are prescribed for the railroads by the Interstate Commerce Commission, and they are uniform for all railroads. After all operating expenses and taxes have been provided for, and uncollectible accounts have been deducted, and after funds have been set aside for the payment of rentals on equipment and joint facilities, the balance left over from revenues is called "net railway operating income," which was for 1921 the 3.31 per cent referred to. Most railroads have some income from sources other than railway operations, such as interest and dividends on securities owned, which, added to the "net railway operating income," constitutes what is known as "gross income."

There are certain fixed charges, however, which must be paid before the "net income" is established, chief among these being interest on the bonds and the rental of leased lines. After making deductions for these, it is estimated that there was practically nothing left of either the "net railway operating income" of 3.31 per cent or the "gross income." In other words, the railroads had no "net income" for 1921.

Some railroads fared better than others during 1921, just as some business men and farmers fared better than others. Preferable location, foresighted management, superior machinery with which to work—these are elements which have their influence in the showing made by a railroad, as they have in every other business enterprise.

The railroads cannot serve the public adequately unless they are able to enlarge and improve their properties as the requirements of the country for transportation service develop. In order for the railroads to grow, their securities must be attractive to investors, for the funds they receive from the issuance of securities are used in improving their properties.

The Illinois Central System, in common with other railroads, is striving to render a service of satisfaction. It is eager to continue to improve and enlarge its facilities, so that its plant may be a little in advance of the needs of its patrons. An overloaded machine is never efficient, and if the overloading continues for any length of time the machine must necessarily deteriorate.

This statement is made in the interest of a better understanding of railway problems. We ask that our patrons view the railway problem in its true light; that they realize that every obstacle placed in the path of railway progress rebounds against them, as much as against the railroads themselves, and that the interests of the railroads and the interests of the public are inseparable.

Constructive criticism and suggestions are invited.

C. H. MARKHAM,
President, Illinois Central System.

Judge C. P. Long For Re-election.

The name of Hon. C. P. Long is announced in this paper to succeed himself as judge of the First Judicial District of Mississippi.

Judge Long was elected to succeed Hon. Claude Clayton in 1918, and has held the scales of justice evenly balanced since that time. As few cases appealed to the supreme court have been reversed from Judge Long's decisions as for any equal period of time under other circuit court judges in this district, and the record shows that the laws have been enforced during his administration with equal justice to all.

Judge Long is a Christian gentleman and believes in dispatching the court's business so as to economize in expenses to the people. While the per diem of jurors and other employees of the courts have been materially increased since he came into office and the business of the courts have been equally or more voluminous, the record shows that the expense of holding the courts has not been correspondingly increased to the people of the counties.

Judge Long states that it is a democratic custom to endorse an efficient officer with a second term, and says that if his record as a fair, impartial and economic judge is a worthy record, he asks the people to say so at the polls by giving him their votes.

Judge Long hopes to see most of the voters of the district, both men and women, before the primary, and states that he will appreciate favorable consideration of his candidacy at their hands.

666

**Cures Malaria, Chills and
Fever, Dengue or Billious
Fever. It kills the germs.**

**A Much Needed Addition to
Our School System.**

The importance of athletics in the school is now recognized by everybody, and every well organized, large school has a coach or coaches for its pupils. The salaries for these coaches are paid, of course, by the school board. These people usually receive better salaries than do the other members of the teaching force. All this is as it should be, and no one can offer a convincing argument against the system. Athletic training is necessary to the physical development and has its place in mental and moral development as well. But there is another phase of school work and supervision that, in my mind, outranks athletics and is destined to receive its due consideration by all up-to-date school boards. I refer to school nursing, or rather health supervision by a graduate

nurse who has had specific training in this line of work. A capable woman who understands the sacredness of her duties and relations to and with her pupils will be of inestimable more value than any other member of the teaching force. Her duties are advisory as well as supervisory, and it has been shown that current sickness can be reduced 50 per cent or more by employing a capable school nurse. But perhaps the greatest good comes in the care of and advice given to the girls who are just budding into womanhood. Again she discovers defects in sight and hearing in the younger children in time to have them cared for before it is too late. She also discovers the cause that may possibly have incipient tuberculosis. This discovery will mean the difference between life and death in many instances.

Now for some practical applications: The schools of Aberdeen and Amory each needs, and should have a nurse. While they do without such service, they can not claim to be first class and up-to-date. So I am hoping that the progressive men and women composing the school boards for these two, otherwise splendid schools will at once consider this matter. In addition to the work outlined above, I see a possibility of getting medical inspection for all the schools in the county. If the county should be divided into two inspection districts, the nurse from the Aberdeen school could work one end, and the Amory nurse could work the other. The microscopic work for both would be done in the county laboratory, and I am sure the State Bureau of Child Welfare would furnish a woman physician to make the physical examinations. Medical

inspection for all the schools in the county and nurse supervision for the two large schools would be a wonderful step forward, and it all can be had if the school boards at Aberdeen and Amory will add to their force a school nurse and will co-operate as suggested above. Your County Health Officer would be delighted to meet the boards mentioned above and discuss the matter in detail. He will also render all possible assistance in working the plan out to a successful end.

G. S. BRYAN,
Co. Health Officer.

Election Commissioner's Notice

Of Special Election for Justice of the Peace, 5th Supervisor's District, for the Western Division of Said District, Composed of the Precincts of Wren and Willis' Store, State of Mississippi, Monroe County.

Notice is hereby given that, in pursuance to an order of the Board of Supervisors of said county, made and entered on the 2nd day of May at the May term thereof, 1922, a Special Election to fill the vacancy existing in the office of Justice of Peace of the Western Division of the 5th Supervisor's District of said county, which division is composed of the precincts of Wren and Willis' Store, will be held as provided by law at said precincts, on SATURDAY, THE THIRD DAY OF JUNE, 1922. Said election to be held under the provisions, restrictions and limitations as provided by law.

This 5th day of May, 1922,
G. S. CLIFTON,
C. O. MCKINNEY,
C. M. KOLB,
Election Commissioners of Monroe County, Miss.

"Sometimes a man postpones advertising to sell his goods until he has to do it to sell his store."

Financial Report of the Mayor and Board of Aldermen of the City of Aberdeen, Miss.

From Oct. 1920 to Oct. 1921.

COMMON CITY	
Receipts.	
Balance in bank	\$ 4,496 32
Common City	60,197 33
Fines	2,338 50
Miscellaneous	151 34
Street Tax	735 00
Paving	11 08
Privileges	2,163 50
	\$60,092 07
Disbursements	
Fire hose	\$ 715 00
Ford truck	750 00
Sprinkling	60 00
Trash cans	67 62
Two mules	400 00
Health Officer	100 00
City Treasurer	50 00
City Assessor	150 00
School allowance	20,732 35
Mayor	1,500 00
Marshal	1,083 28
Clerk	162 50
Night Watchman	975 00
Street Commissioner	975 00
Police	975 00
Truck Driver	975 00
Aldermen	312 50
Janitor	334 50
Bonds and Interest	11,878 86
Coal and Freight	411 25
Fire and Tornado Insurance	996 26
Street Work	903 09
Telephones	67 42
Special Police	40 00
Tires and repairs for truck	670 97
Street Force	2,347 50
Ant poison	692 26
Gravel and Freight	1,061 32
Garage Account	68 41
Drug Store Account	110 54
Hardware Account	271 79
Feed for Mules	533 46
Blacksmithing and Plumbing	97 80
Miscellaneous	211 18
Dockets, Stationary & Prtg.	398 26
Repairs on City Hall	70 00
Lumber	20 87
Grocery Store Account	56 25
Balance in bank	8,866 82

SCHOOL FUND.	
Receipts.	
Balance in bank	\$ 920 24
Interest on balances	13 32
Jan. State Distribution	1,614 22
Jan. State Distribution	327 25
Jan. State Distribution	3,175 69
May State Distribution	785 02
June Chancery Clk Country	562 59
July Chancery Clk Country	633 69
Pupils	4 25
P. A. Dulin	4 25
Jan. Prof. Bowls tuition	465 75
Country Pupils	469 00
July Prof. Bowls tuition	469 00
Country Pupils	469 00
1921 Mayor tuition Country	246 07
Pupils	20,732 35
City Allowances	29,939 44
	\$29,939 44
Disbursements	
Repairs on School	\$2,219 80
Bond and Interest	2,119 50
Coal and kindling	612 31
Supt. of Schools	2,750 00
Teachers	12,836 20
Supt. Colored Schools	675 00
Teachers	2,160 00
Oil Stoves and Machine	172 50
Typewriting	9 50
Seals	16 50
Diplomas	47 77
Telephones and postage	13 54
Maps	37 50
Crayons and toilet paper	53 00
Cabinet	22 75
School Supplies	118 39
Teachers' helps	8 05
Paper and patterns	17 87
Class books	8 40
Balance on Typewriters	349 18
Brooms	44 30
Plumbing	13 00
Blackboards and Repairs	298 80
Stationary and Printing	39 75
Hardware account	223 73
Drug Store account	44 35
Freight and Drayage	133 35
Water and Lights	215 63
Janitors, 2 schools	697 03
Balance in bank	3,941 09
	\$29,939 44
SUMMARY OF ACCOUNTS	
Receipts	
Common City	\$60,092 07
School Fund	29,939 44
	\$90,031 51
Disbursements	
Common City	\$51,225 25
School Fund	25,998 35
Balance	12,807 91
	\$90,031 51

Notice to Creditors.

The State of Mississippi, County of Monroe, Chancery Court. No. 6680.
Estate of Mrs. Mary Ann Holmes, N. W. Holmes, Executor.
Notice is hereby given to all persons holding claims against the estate of Mrs. Mary Ann Holmes, deceased, that letters Testamentary were granted to the undersigned as Executor of said estate by the Chancery Court of said county, on the 3rd day of May, 1922, and all persons holding claims against said estate are hereby notified to have same probated and registered according to law by the Chancery Clerk within six months from date of this Notice, otherwise such claim or claims not so probated will be forever barred.
This the 3rd day of May, 1922.
N. W. HOLMES, Executor.

Notice of Letting Contracts for Running Road Tractor and Operating Road Grader, 2nd District.

The State of Mississippi, County of Monroe, City of Aberdeen, Board of Supervisors, May term 1922.
Notice is hereby given that the Board of Supervisors of said County, will, at its meeting, on the First Monday in June, 1922, at the court-house thereof in the City of Aberdeen, up to the hour of 2 o'clock p. m., receive sealed proposals for the contracts for Running Road Tractor and Operating Grader on the 2nd District Roads of said county, for a term to be fixed and determined by said Board of Supervisors, and which work is to be done under the supervision and control of the Board of Supervisors, according to law, and if satisfactory bids or proposals are then and there received, the Board will award contracts accordingly. Right to reject any and all bids is hereby reserved. By order of the Board of Supervisors, this the 3rd day of May, 1922.
J. T. MORGAN,
Clerk of Board of Supervisors.
By G. G. RAY, D. C.

"When money talks it never tells you where to get it."

**Kentucky Wonder
and Texas Beans in bulk.
Cantaloupe and Water-
melon Seed, per lb., 65c.
Fine Seed Peanuts.**

**Anheuser-Busch
Budweiser on tap. Coca-
Cola on Ice.**

First-class line up-to-date Groceries.
We can save you money.

E. D. MURPHY & SON.
Phones Cumb. 80. Indept. 13.

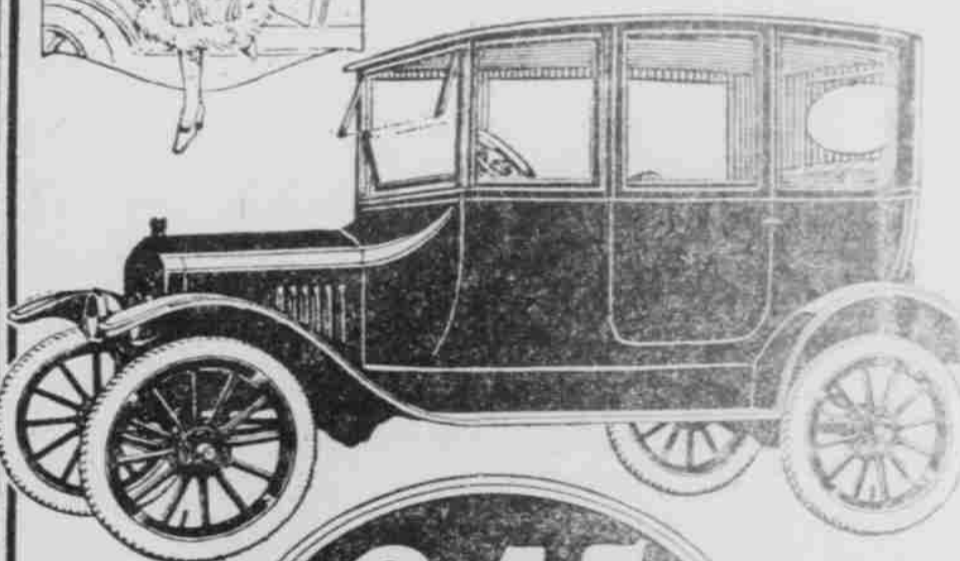
FEED and SEED

Sweet Feed,	Seed Corn
Dairy Feed,	Early Yellow Dent
Hog Feed,	Early White Dent
Chicken Feed,	Hickory King
Hay,	Hastings Prolific
Corn,	Whippoorwill Peas
Oats,	Black Peas
Chops,	White Peas
Shorts,	Clay Peas
Rice Bran,	Bulk Garden Seed
C. S. Meal,	Package Garden Seed

We can SAVE you MONEY on your Feed and Seeds or anything in the Grocery line. Get our prices TODAY.
FREE CITY DELIVERY.

Gott's Grocery.

Ind. Phone 46. Aberdeen, Miss.



\$645
Unequaled in Value
F. O. B. Detroit

The New Ford Sedan.

New high grade upholstery. Non-rattling windows that raise automatically. Timken Roller Bearings in front hubs. Ventilating windshields. Larger Steering Wheel. Electric Starter. Electric Lights. New design Headlight lens. All these features embraced in the new type Sedan. Our supply will be limited. See or Phone us your order for early delivery.

W. G. PEUGH, Ag't, Aberdeen.

See two of your friends and have them subscribe for The Aberdeen Weekly at \$1 each, and for your time and trouble, we will give you a year's subscription to our paper FREE.
Try The Progressive Farmer

WILL PASTURE STOCK in good prairie, six miles west of Aberdeen, at following prices: 75c per head per month; under 1 year olds, 50c per head per month. Plenty running water in pasture. Apply to A. J. ADAIR, Aberdeen, Route 5.