

# ORDER BY MAIL TODAY FROM THE WORLD'S LARGEST 32-Volt Electric Appliance Company

**FREE!** CHRISTMAS TREE LIGHTS

With any order of these HAINES Appliances in this advertisement, we will send free of any extra cost a 32-volt set of Christmas Tree Lights, complete with 9 G. E. Colored Bulbs, reg. \$3.95.

Now you can enjoy the comfort and convenience of modern electrical 32-volt appliances in your own farm and ranch home.

**ORDER TODAY!**

... be practical this Christmas. Give

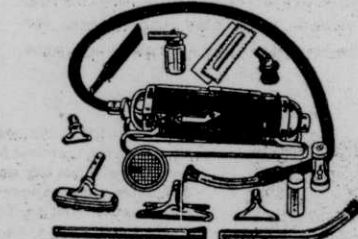
## 32 Volt D.C. ELECTRICAL APPLIANCES

THE APPRECIATED GIFTS

All Appliances Shown in This Ad Are Carefully Constructed of the Finest Materials Available and Carry Our Full 1-Year Guarantee

**32-VOLT DRILL**  
 1/2" cap. High torque Speed-Way motor. Die cast housing. Natural grip direct thrust breast plate handle. Removable side handle. Oil-less bronze bearings. 500 R.P.M. \$36

**DRILL STAND**  
 Lever operated. Sturdy machined and ground base. Bars for bolting. Cast drill bracket. Line bored. Holds drill rigidly. Accurate in all positions. Adjusts for height. \$12.95



**32-Volt Royal Cylinder Vacuum Cleaner**  
 Complete with full set of attachments. Easy to operate. Powerful 1/2 H. P. air cooled motor. The gift she will truly appreciate. \$69.95

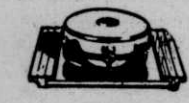


**32-Volt Life-Time Soldering Iron**  
 Heavy duty heating element housed in damage-proof barrel. High ratio heat transfer. Vents assure cool grip at all times. Ideal gift for the handyman. \$8.95

**32-Volt Heating Pad**  
 3 speeds. 4-position switch for proper regulation. Soft flannel cover. \$12.95

**32-Volt Radio-Phonograph**  
 Satchell-Carlson console. Automatic record changer. 9 tubes. 19" console speaker. Built-in loop antenna with external connection. Parallel push-pull output. Blonde or Mahogany. \$189.95

**32-VOLT TABLE RADIO**  
 Satchell-Carlson 7-tube super-het with attractive walnut plastic cabinet. Built-in loop aerial. Direct powered. Perfect gift. \$39.95



**32-Volt Waffle Iron**  
 Bakes large 8-inch waffles. Accurate heat indicator. Lustrous chrome finish. A gift any hostess will want. \$19.95



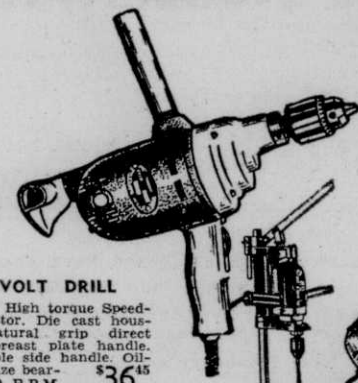
**32-Volt Corn Popper**  
 Handsome deluxe. Large aluminum popper. Pyrex glass cover. Pops in a jiffy. \$12.95



**32-Volt Fan**  
 10" blades. Two speeds. LOW... circulates heat in winter. HIGH... cools in summer. \$29.95



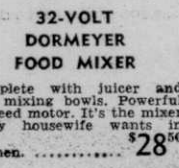
**32-Volt Bottle Warmer**  
 Ideal for heating baby's bottle. Attractively and artistically finished. \$6.95



**32-Volt Sandwich Grill**  
 Makes delicious toasted sandwiches. Toasts both sides at once. Can be used to grill eggs, chops. Beautifully finished in chrome. \$12.95



**32-Volt Schick Super Shaver**  
 Tops in bother-free shaving. No nick-no burn. Compact close cropping heads do double duty. 16,000 motions per minute. Ivory plastic. \$23.50



**32-VOLT DORMEYER FOOD MIXER**  
 Complete with juicer and two mixing bowls. Powerful 3-speed motor. It's the mixer every housewife wants in her kitchen. \$28.95

**32-VOLT REMINGTON CONTOUR 6**  
 Six times more effective than a single-head shave. Six cutting heads that give fast, comfortable shaves. The gift every man wants. \$24.95

**32-VOLT HAIR CLIPPER**  
 High grade hair cutting unit for home use. Equipped with especially designed tapering comb attachment which assures a good hair cutting job. \$12.95

**32-VOLT HAIR DRYER**  
 Silent type fan eliminates all noise. 24 cubic feet of air per minute with 180° air temperature at nozzle outlet. Just the thing the little lady always wanted. \$19.95

**32-VOLT ELECTRIC IRON**  
 High-medium-low heats for correct ironing temperature. A modern streamlined iron in a beautiful chrome finish. Iron weight only 4 lbs. \$12.95

**32-Volt Deluxe Toaster**  
 Large deluxe size. Makes 2 slices of delicious golden brown toast. All steel construction. Large, cool ebonized handle grips. Richly finished in chrome with ebonized rubber tipped base. \$8.95

## Yes, Wheatgrass Uses Nitrogen BUT—

By RALPH MERCER

MY TEXT for this month's column is "Count Your Blessings." It is rather appropriate in that Thanksgiving is but a few days away. It is prompted however, by an article which came over my desk recently titled "Crested Wheatgrass Is a Soil Robber." It was published in a magazine coming from an adjoining state, but has probably been read by many Montana producers.

Briefly, all plants are soil robbers. If one wished to write of the sins of our crop family rather than the virtues, it could be done very easily. This article is characteristic of so many things that are being done in reverse in this old world that it merits comment.

We in Montana have always considered crested wheatgrass as a god-send to our country. It is a drought resistant plant, it is a high protein feed whether used for hay or pasture, it is palatable and where the stand is kept thin enough it furnishes a good volume of feed per acre.

### Early Spring Pasture

It furnishes a large volume of early spring pasture before our native grasses are ready for use, and in years when we have fall rains it furnishes excellent fall pasture. During our worst drought years it furnished a cover for thousands of acres of abandoned cropland. Most of these acres were grazed or cut for hay in a period when our ranges were struggling in a comeback from the early drought years of the 30s.

It has furnished much needed income in hay reserves, pasturing and the production of seed.

Sure—there have been years when it didn't have enough early spring moisture to produce at capacity, but it stayed in there pitching far better than many other grasses. From Bulletin 431 "Dry Land Pasture Experiments" conducted at the Central Montana Branch station, Moccasin, under the supervision of Ralph M. Williams, all kind of virtues can be assembled for crested wheatgrass. Here are a few when compared with native grass and brome grass. Wheatgrass furnished grazing about two weeks earlier in the spring than native and two weeks earlier than the brome. It furnished 17 days more grazing than native and seven days more than brome. A comparison of total gains in annual weight per acre were 78.6, 36.9 and 54.4 pounds respectively, on crested wheatgrass, native grass and brome grass.

Crested wheatgrass may be a robber, but for my chips it gives back in the form of produce which can be converted into cash much more than it steals. Maybe we should have more such robbers.

### Grasses Heavy Nitrogen Users

Grasses are heavy users of nitrogen. However, on our dryland soils of Montana when only a limited amount of plant food is available each year, the results of such production are not damaging. The amount made available for each crop is dependent on the amount of moisture we have to help make these available and to act as carriers through the plant structure.

The crop yield reported in this article I refer to showed a very low yield on spring plowed crested

**The HAINES Corporation**  
 701 3rd Avenue So. Minneapolis, Minnesota

**CLIP & USE THIS HANDY ORDER BLANK!**

THE HAINES CORPORATION  
 Dept. MF 701 Third Avenue South,  
 Minneapolis, Minn.

Please send me postpaid the items listed below. I'm including my check or money order, or ship C.O.D. and I'll pay postage. Also include my Free Christmas tree lights. All items fully guaranteed for one year.

Appliance	Price
.....	.....
.....	.....
.....	.....
.....	.....
Name .....	.....
Address .....	.....
City .....	State .....