

# Farmers-Stockman



A well landscaped farm home in Lewis and Clark county.

## For Beauty and Utility

# Plan Before You Plant

By **LEONARD A. YAGER**, Assistant Extension Horticulturist

LANDSCAPING of our farm home grounds can be useful as well as beautiful.

Properly placed hedges or windbreaks can hold snow off our drives; large trees provide much needed shade around the farm house and in other areas of our property. Our plantings around the home can also make outdoor living more enjoyable and pleasant during the summer months.

### Common Errors

Some of the common mistakes in plantings often seen are these:

Plantings, such as flower beds, rock gardens or specimen shrubs, that are scattered all through the yard area, making lawn mowing a complicated task.

Overuse of certain plant materials, such as too many trees, overcrowding of shrubs or too many artificial garden ornaments.

Landscaping too large an area, making upkeep difficult.

Lack of relation between various plant elements—flowers, shrubs, trees, vines. A well designed place has all of these elements related to one another and each a part of the whole design.

### Changing, Growing Pictures

Landscape designing is an art much like painting pictures or composing music, and all of these arts have things in common. Unlike the painted picture, the landscape picture that we create is ever changing with the season and the passing years.

To produce good design one must be thoroughly acquainted with plant materials,

their availability and adaptability. The designer must also have an artistic sense to arrange plants in pleasing designs, keeping in mind seasonal changes and the fact that many of these materials will be increasing in size as they approach maturity.

In the eastern part of Montana and in much of Wyoming one of the essential needs before a landscaping program is begun is a well-planned shelterbelt. In fact, as it develops it should be considered as part of the landscape picture on the farm. In a sense, it will form the framework or background.

The shelterbelt will consist of an outside shrub row with several inner rows of taller trees. In some instances the planter may wish to plant the very inner row with an evergreen to increase the protection during

the winter and add year round beauty to the planting.

It is desirable to establish this shelterbelt before much of the landscaping is done, as it will be an important factor in the protection of the landscape plants that are put in later. In fact with good shelterbelt planting one may be able to grow more tender shrubs and plants than he could without this protection.

### Size of Area

The size of the area to be landscaped depends on various factors. One of the important considerations is the amount of time the farm family will be able to spend in taking care of the grounds. This in turn depends on the equipment available for maintenance of the grounds. A larger farm home looks better on more expansive grounds than the smaller one.

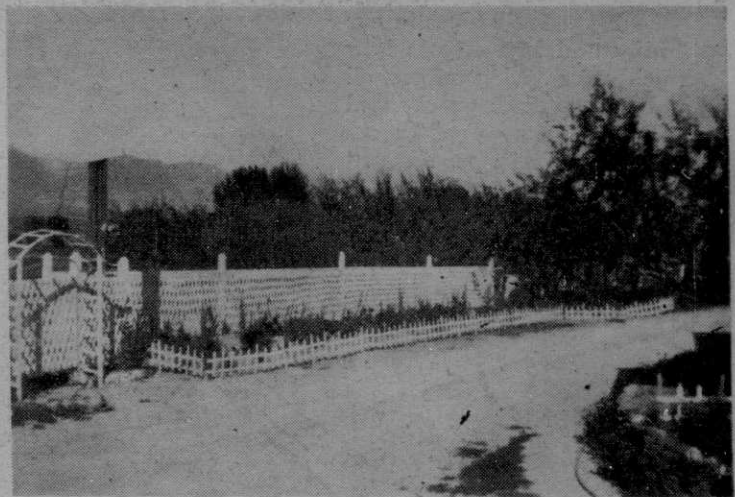
One of the mistakes often seen is the farm home built too close to the main road. There are obvious advantages for keeping it at reasonable distance from the road because of dust, noise, etc. But a good sweep of lawn in front of a farm home also provides a beautiful setting for that home although there may be more grass to mow. Distances from 60 to 100 feet from the road are considered desirable.

Of course, if the home is already built too close to the road, there is little one can do about changing things.

### Three Areas

Three areas should be considered in planning the yard immediately about the farm home. Briefly, these are called the public, private and service areas.

Normally the area immediately in front of the farm house is considered the public area. Usually this area gives a view of the farm home from a public road. It is landscaped in such a manner that it forms a



This attractive area in a Ravalli county farm home yard was developed by the daughter of the family as a 4-H project. For a before and after view and the story see page 38.

picture as seen by those who pass on the road. It should be landscaped with the farm dwelling as the center of interest.

The service area includes the drive or approach to the house, the clothes line and drying yard, etc.

The private area is being considered more and more by farm people. It is landscaped in a manner to enclose it with shrubs and trees. (Please turn to page 4.)