

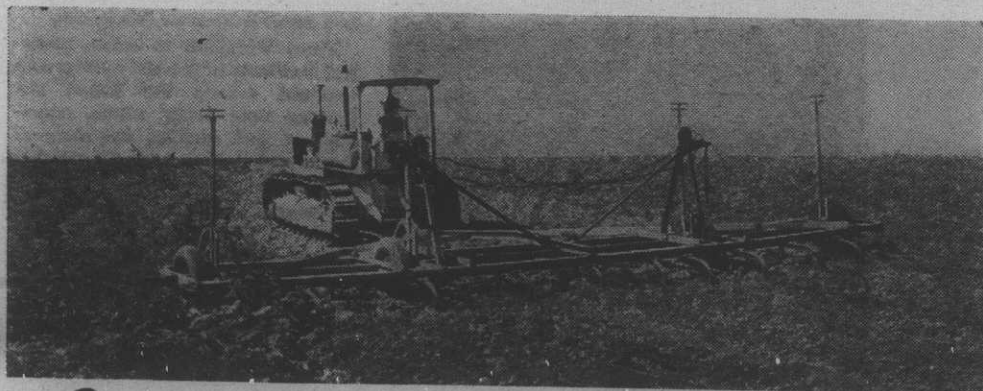
3 "CAT" DIESEL TRACTORS } = 390 ACRES SUMMER-FALLOWED DAILY
+ 3 MEN }

*on the Floyd Warren, Inc. Ranch
Hardin, Montana*

Big job . . . but just another day's work for three men and three "Cat" Diesel Tractors . . . two early model 35 drawbar horsepower D4s and a D7! Big job . . . but low cost! 80 gallons per day of 16c Diesel fuel in the tanks of the three tractors do the job . . . that's summer fallowing for less than 4c per acre!

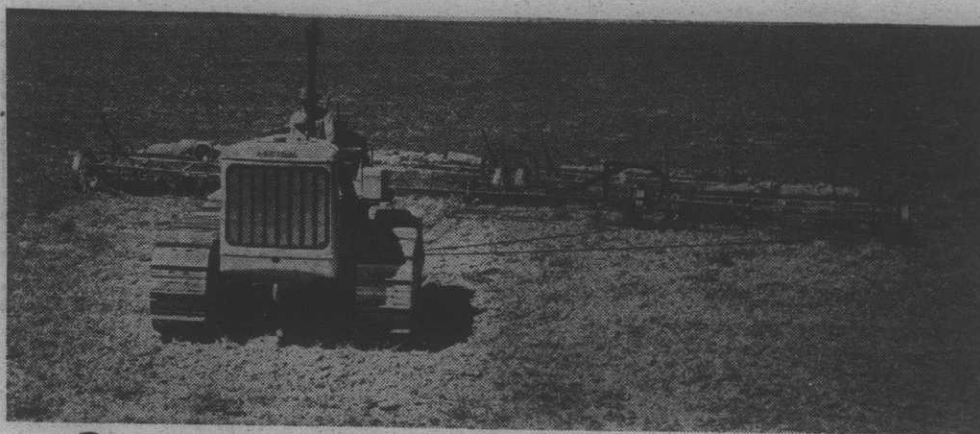


1. Chiseling and rod weeding in one operation with a D4. Covering about 8 acres per hour. This D4 has worked more than 15,800 hours.



2. One of the Floyd Warren, Inc., D4s pulling a 32 foot chisel cultivator. Using about 2 gallons of Diesel fuel per hour.

Visit with your neighbors who own "Caterpillar" equipment and you'll hear pretty much the same success story. Compare your present tractor's capacity, fuel and maintenance costs with theirs. You'll find plenty of reasons for owning a "Caterpillar" Diesel Tractor; *plan to just as soon as conditions permit. Until then, keep your present equipment operating at its best. We'll be glad to give you service tips and assist you in your maintenance problems.*



3. "Caterpillar" Diesel D7 Tractor pulling 48 feet of rod weeder over summer fallow. Uses about 4 gallons of Diesel fuel per hour; covers 21 acres per hour.

**WORTHAM
MACHINERY CO.**

509 North 27th Street, Billings
and
Cheyenne, Greybull, Sheridan, Wyo.

**CENTRAL
MACHINERY CO.**

721 2nd Street South, Great Falls
Havre Lewistown

**TRACTOR &
EQUIPMENT CO.**

Sidney, Miles City, Glasgow