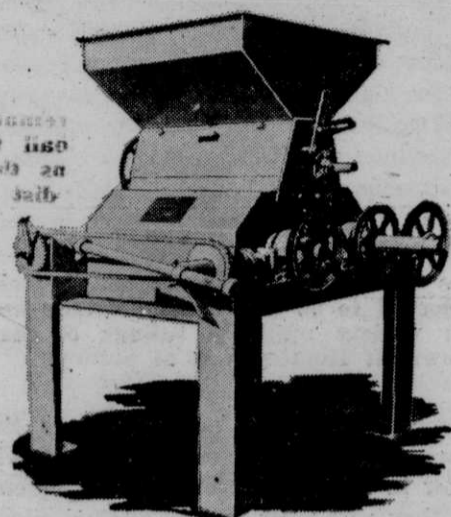


# NOW is the time to buy the PROFIT-PRODUCING EQUIPMENT described on this page

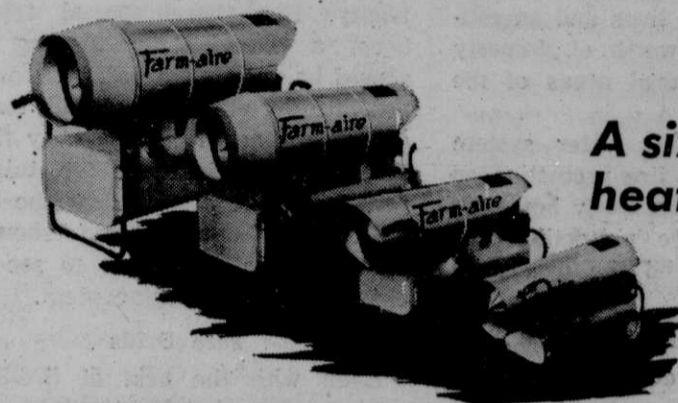


**Crimps or cracks  
150-200 bu. of  
grain per hour**

## DAVIS Grain Roller

Feed millers, ranchers and farmers have proven no other grain mill is "just as good" as the Davis Krimper-Kracker. Both rolls fully powered.

- absolutely unbreakable rolls that will last a lifetime; have 60,000 lbs. tensile strength; 10 $\frac{3}{8}$ " diameter; 20" length
- single lever sets desired roll spacing
- spring relief automatically protects machine
- clog-proof rotary type feeder; 10' auger
- 10" x 20" model uses 7 $\frac{1}{2}$  to 10 h.p.
- for more details — mail coupon



**A size to do any  
heating job**

## FARM-AIRE Space Heater

A portable, Farm-aire heater is heavy duty, safe, fast, clean, economical. Four models from 75,000 btu/hr to 450,000 btu/hr.

- puts heat on wheels; requires no vent
- uses either kerosene or #1 fuel oil
- has large oil filter; low speed pump
- tank holds enough fuel for 12 to 16 hours
- warms workmen, livestock, buildings
- pre-heats mechanical equipment
- thaws out pumps, lines, hoists, etc.
- for more details — mail coupon

**M&W**

**Grapple and  
manure fork  
combination**

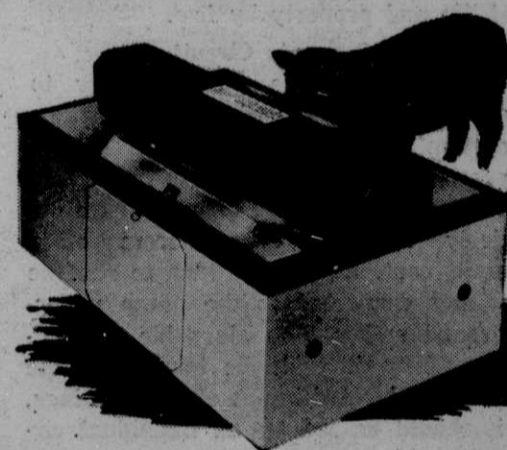
## JOHNSON Work Horse Loader

This grapple and manure fork combination on model 9500 loader is the utility way to handle manure and other weighty materials.

- for cultivating and utility type tractors
- overall height only 75 in.; loader clears any place your tractor goes; lifting height 22 ft.
- lifting capacity: 1800 lbs.; breakaway 3800 lbs.
- can be equipped with sweep rake and push off combination to handle hay and forage crops
- has 12 gallon PTO pump
- for more details — mail coupon



**Self-filling  
Non-freezing**



## MIDSTATE Stock Waterer

Gives you cheaper, faster weight gains because it provides water warm enough to encourage drinking even in the coldest weather.

- built to withstand hard knocks of feedlot
- all models thermostatically controlled
- warm base area keeps pipes from freezing
- rust-proof brass and copper working parts
- removable easy-to-clean drinking pan
- maintains fresh water at constant level
- operates economically at 110 or 220 volts
- for more details — mail coupon

# MIDLAND



**IMPLEMENT CO. INC.**

*Wholesale Distributors*

**BILLINGS**

**GREAT FALLS**

Midland Implement Co., Inc.  
Billings, Montana Dept. 60-19

Please send me more information about:

- Davis Roller Mill     Johnson Loader     Midstate Waterer     Farm-Aire Space Heater

Name .....

Address .....